

GPS CONTROL POINTS

HVCTRL # 1

STANDARD DISK STAMPED
 CHEESE 1998
 N = 215703.2858
 E = 1469176.0870
 ELEV. = 635.82

GENERAL LOCATION ARLINGTON, VT. TO REACH FROM THE INTERSECTION OF VT. ROUTES 313 AND 7A IN ARLINGTON GO NORTH ALONG VT ROUTE 7A OR 1.2MI (1.9 KM) TO THE MARK ON THE RIGHT OPPOSITE THE CHEESE HOUSE. THE MARK IS SET FLUSH WITH THE GROUND SURFACE IN THE TOP OF A 30 CM DIAMETER CONCRETE MONUMENT SET 1.3 M (4.3 FT) DEEP. IT IS 2.0 M (6.6 FT) EAST OF AND ABOUT LEVEL WITH EAST EDGE OF PAVEMENT OF VT ROUTE 7A, 20.0 M (65.6 FT) WEST OF WEST RAIL OF VERMONT RAILROAD TRACK, 13.3 M (43.6 FT) SOUTH OF TRAFFIC SIGN WITH MILE MARKER 0071/0201/0521, AND 5.4 M (17.7 FT) NORTH OF POLE NO.3/54/53 AND FIBERGLASS WITNESS POST.

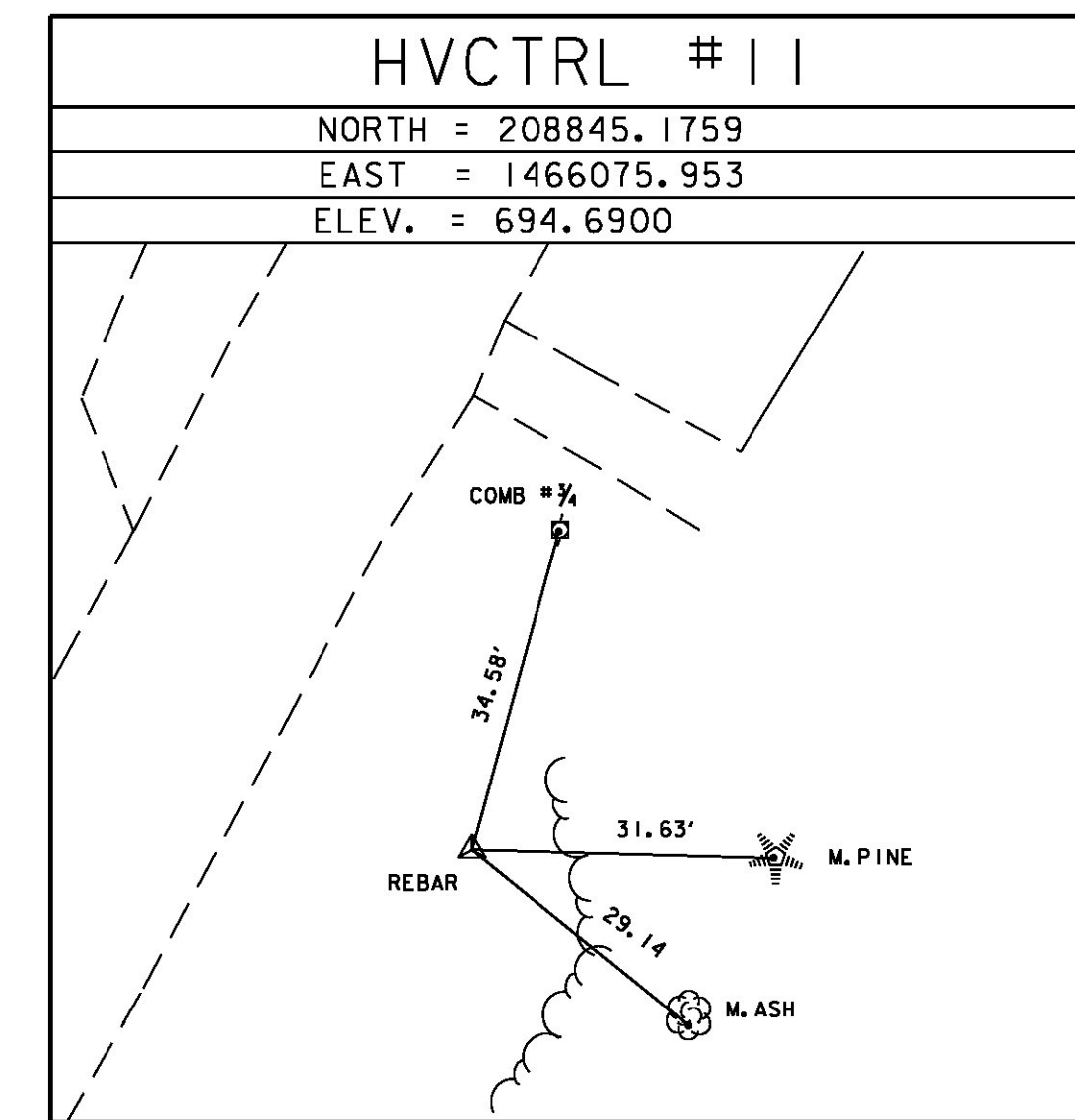
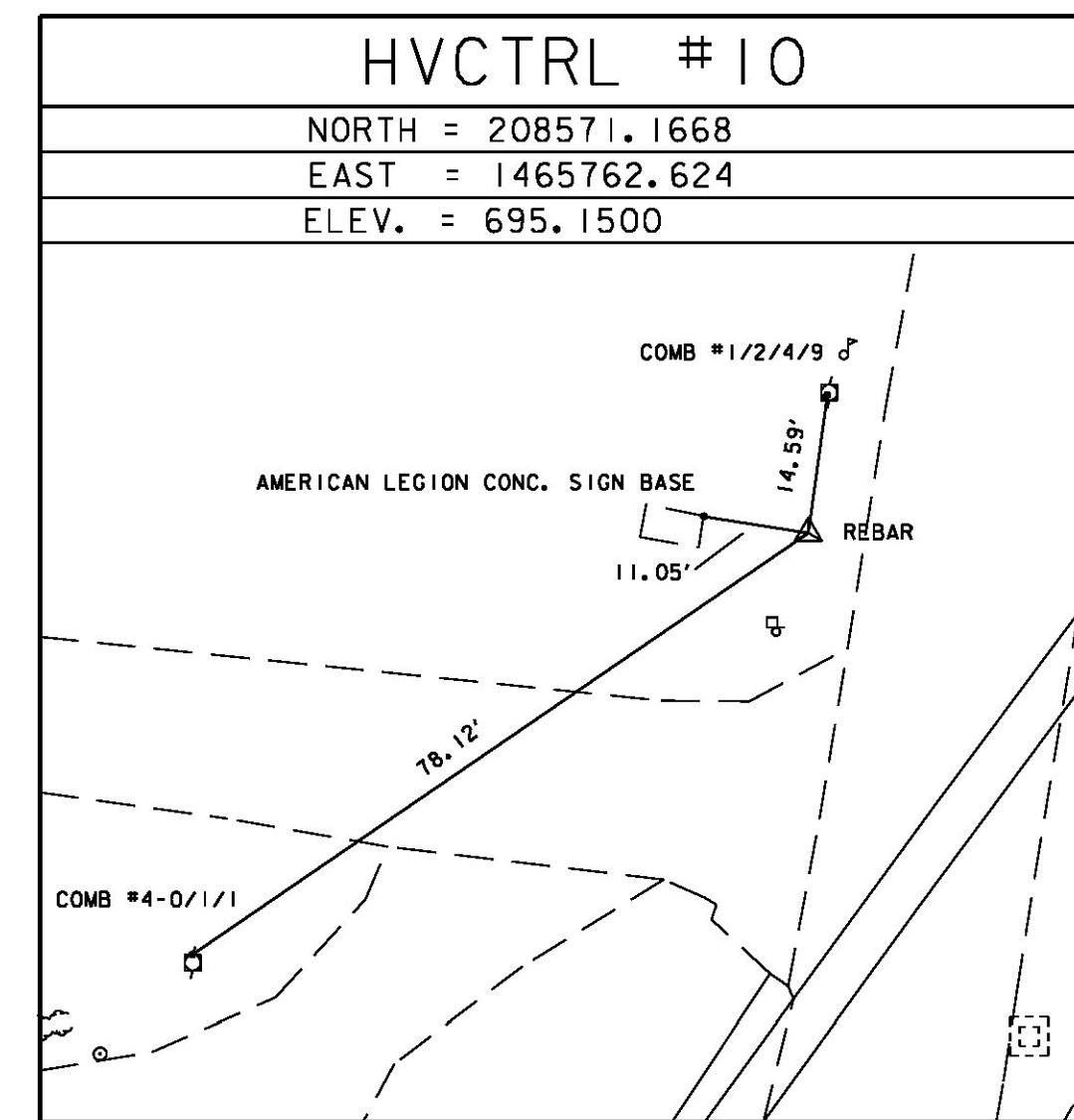
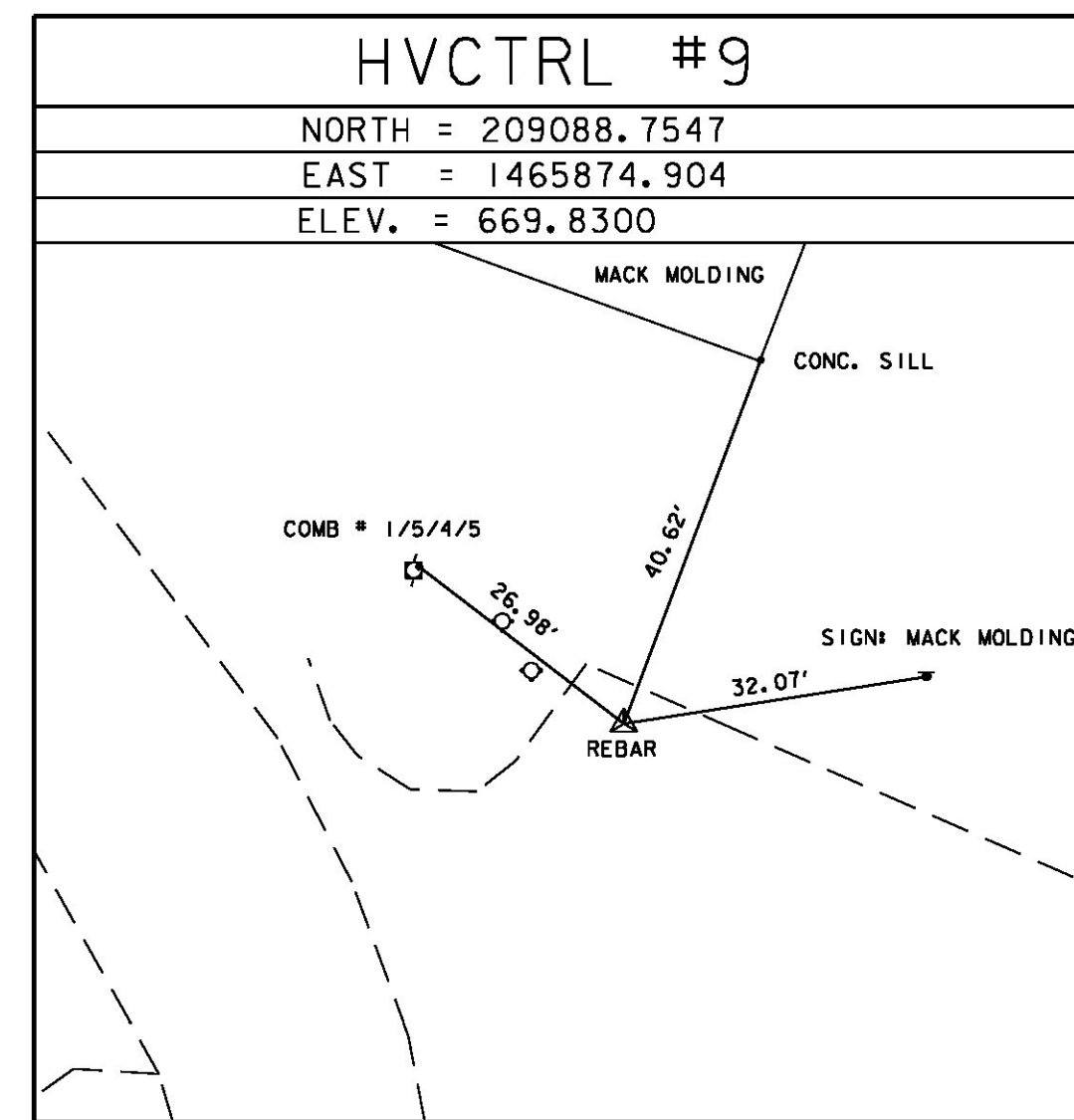
HVCTRL # 2

STANDARD DISK STAMPED
 CHEESE AZ
 N = 213614.6778
 E = 1468337.8900
 ELEV. = 653.33

GENERAL LOCATION ARLINGTON, VT. TO REACH FROM THE INTERSECTION OF VT. ROUTES 313 AND 7A IN ARLINGTON GO NORTH ALONG VT. ROUTE 7A FOR 0.8 MI (1.3 KM) TO THE NORTH END OF THE BRIDGE OVER THE WARM BROOK AND THE MARK ON THE RIGHT. THE MARK IS SET IN THE ABUTMENT ON THE NORTHEAST CORNER OF THE BRIDGE IT IS 5.3 M (17.4 FT) EAST OF AND ABOUT 0.3 M (1.0 FT) HIGHER THAN THE CENTERLINE OF VT. ROUTE 7A, 23.8 M (78.1 FT) SOUTH OF THE CENTERLINE OF LAVER ROAD, 0.1 M (0.3 FT) WEST OF THE EAST FACE OF THE ABUTMENT, AND 7.7 M (25.3 FT) WEST OF POLE NO.38/38 AND A FIBERGLASS WITNESS POST.

• DESCRIPTION PROVIDED BY VERMONT AGENCY OF TRANSPORTATION GEODETIC SURVEY UNIT

TRAVERSE TIES



NORTH =
EAST =
ELEV. =

NORTH =
EAST =
ELEV. =

• MAIN TRAVERSE COMPLETED 02/28/04 by L. Orvis & C. HARDING

ALIGNMENT TIES

NORTH =
EAST =

NORTH =
EAST =

NORTH =
EAST =

NORTH =
EAST =

NORTH =
EAST =

DATUM
 VERTICAL NAVD 88
 HORIZONTAL NAD 83 (96)
 ADJUSTMENT COMPASS

PROJECT NAME: ARLINGTON
 PROJECT NUMBER: STP 0114 (4)

FILE NAME: x01g066+1e.dgn	PLOT DATE: 2/5/2016
PROJECT LEADER: D. BUA	DRAWN BY: J. HULETT
DESIGNED BY:	CHECKED BY: P. HODGE
TIE SHEET	SHEET 11 OF 27