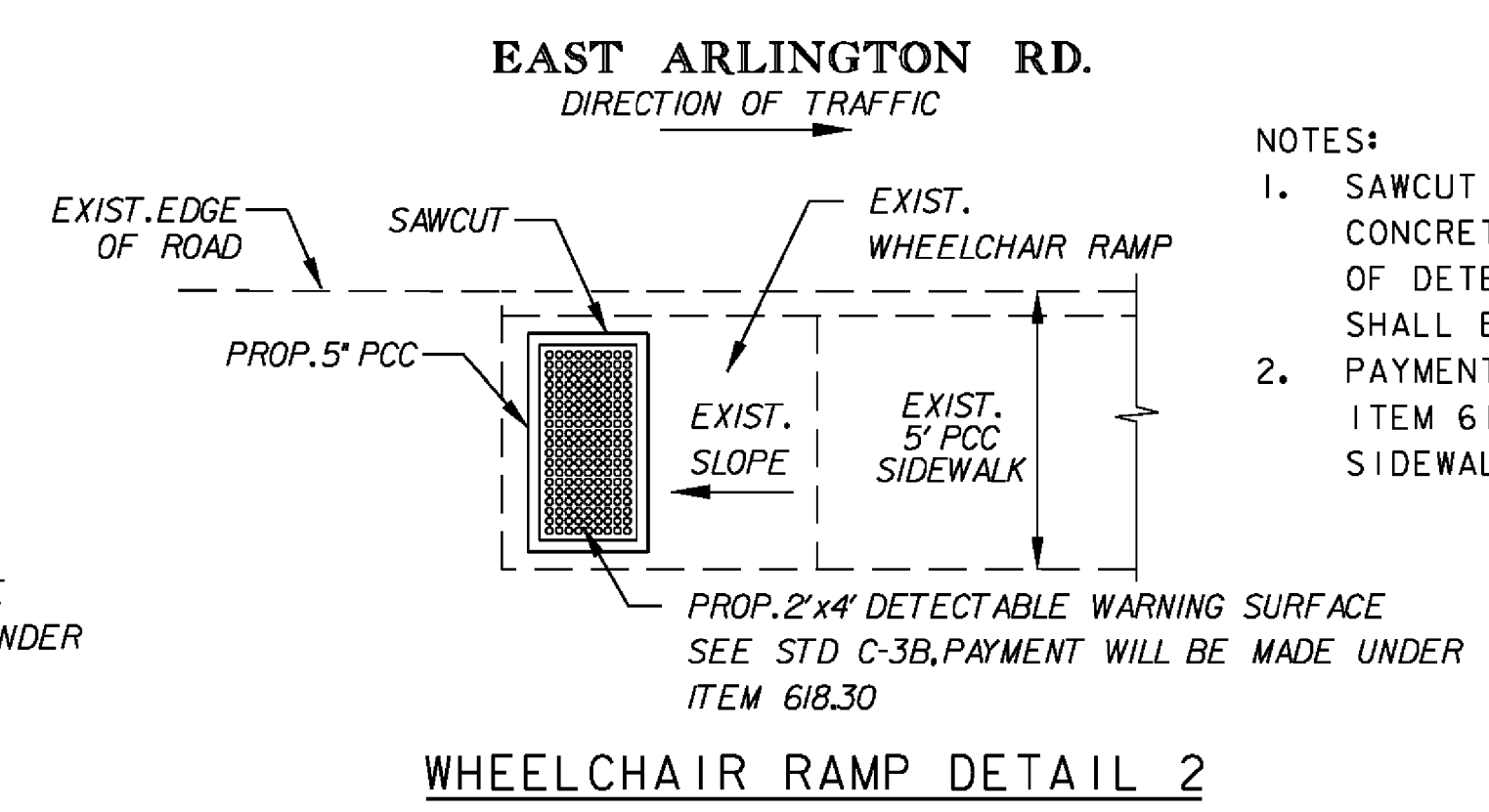
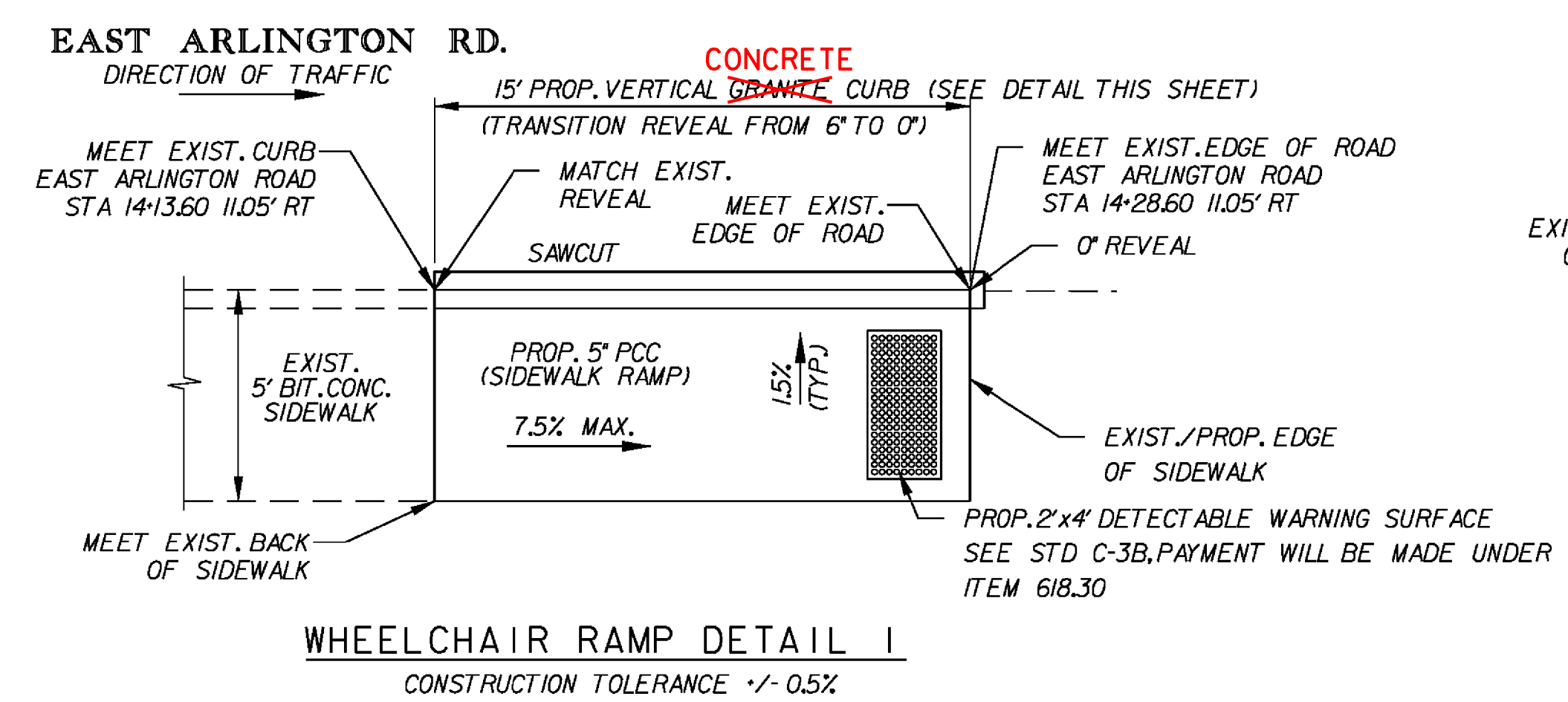
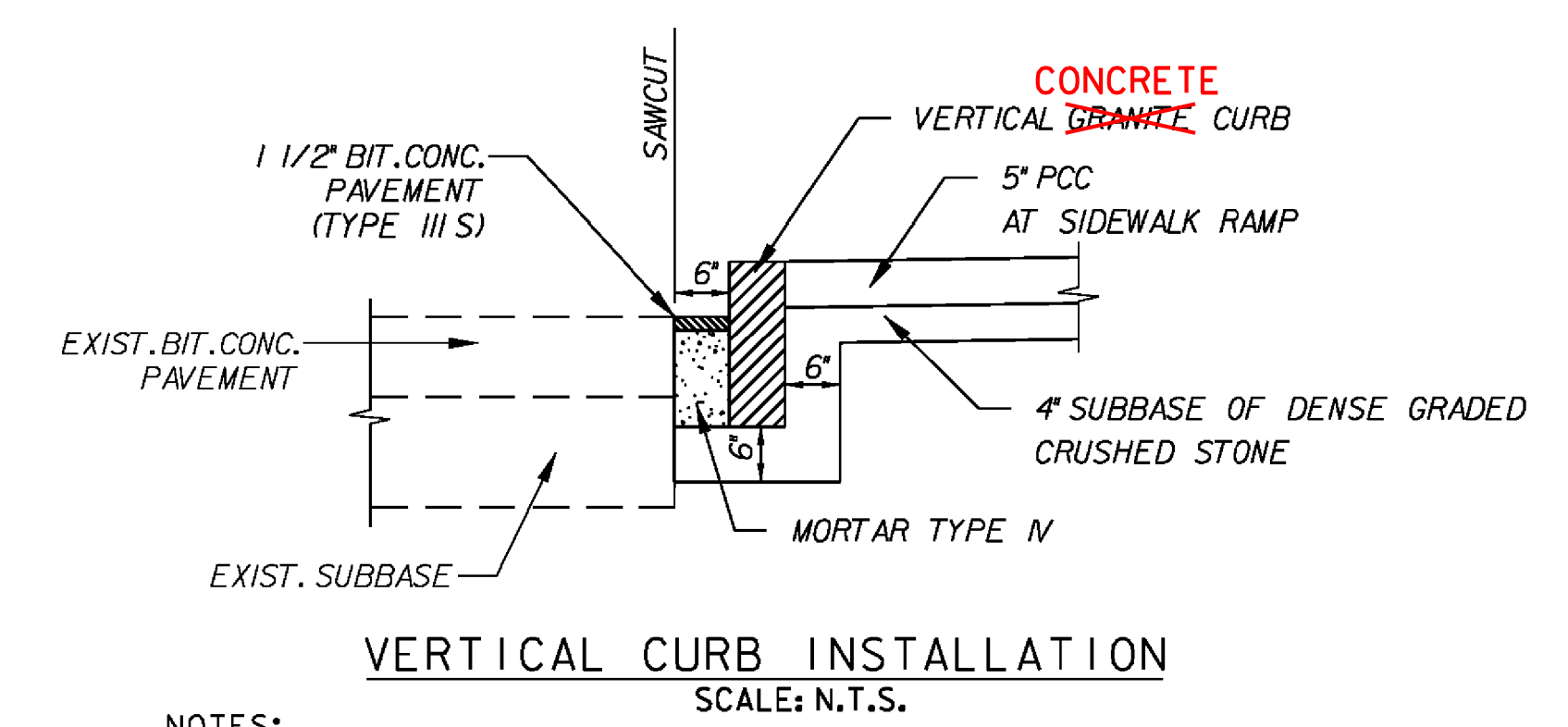
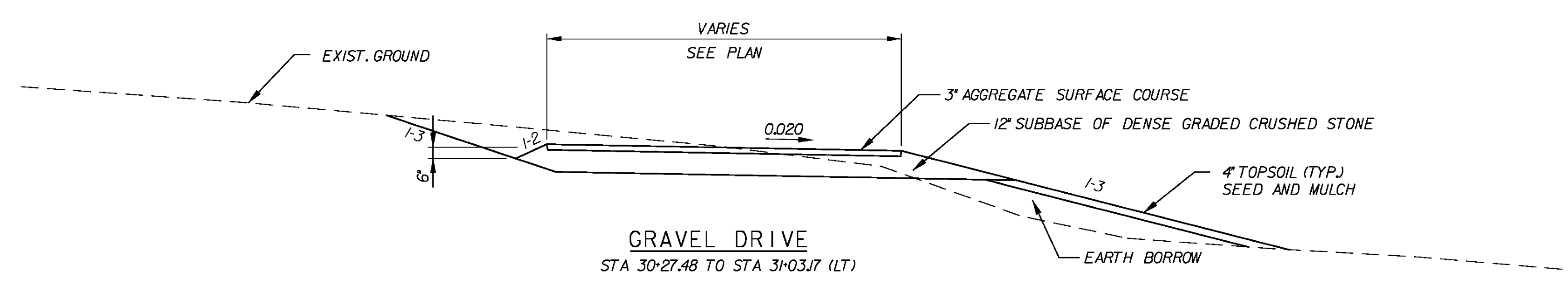
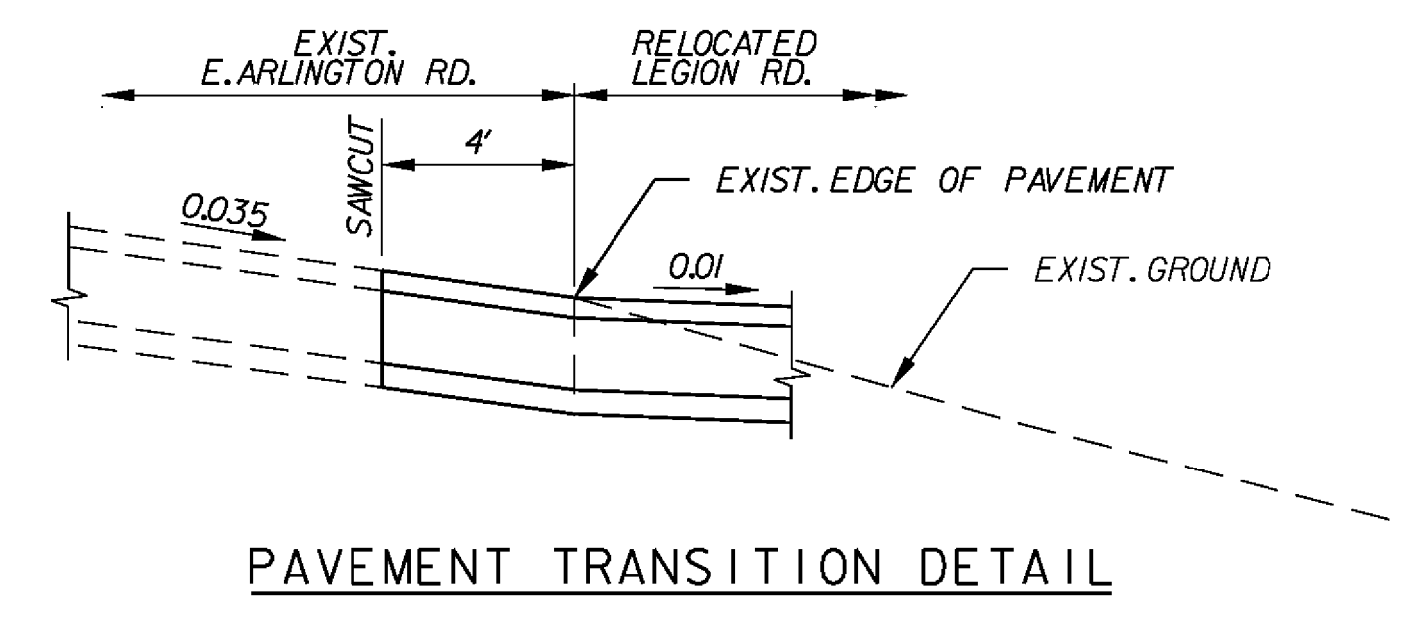
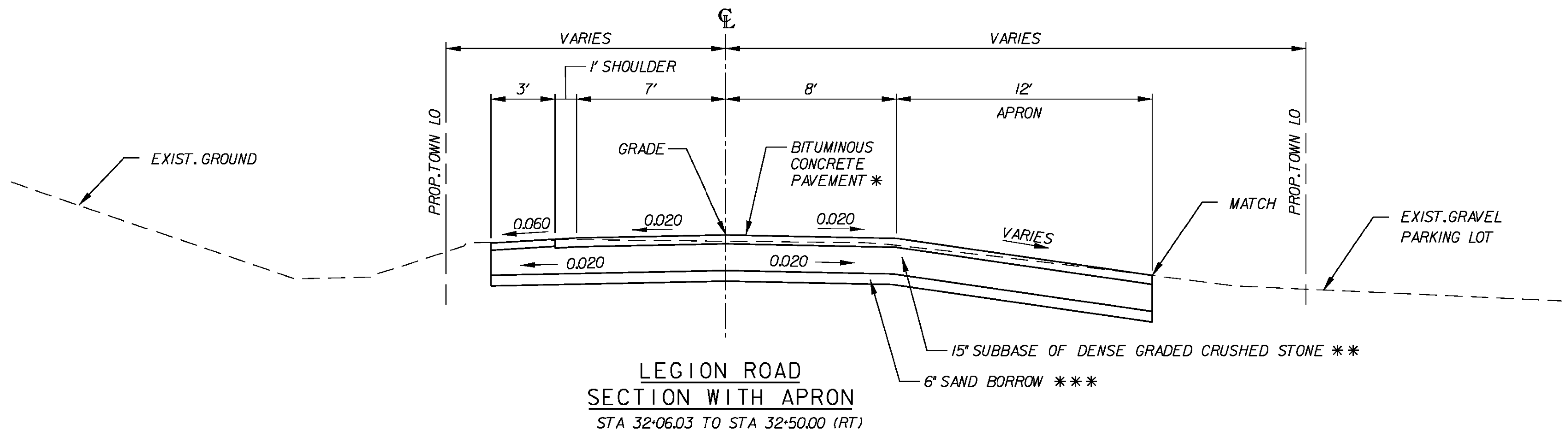


MATERIAL ITEM	(TOTAL DEPTH) THICKNESS TOLERANCE
PAVEMENT	(+/-) 1/4"
SUBBASE	(+/-) 1"
SAND BORROW	(+/-) 1"

- PAVEMENT NOTES**
- PROPOSED FULL DEPTH CONSTRUCTION:
- * 1 1/2" BITUMINOUS CONCRETE PAVEMENT (TYPE III S) (PG 58 - 28)
 - * 3 1/2" BITUMINOUS CONCRETE PAVEMENT (TYPE I S) (PG 58 - 28)
 - ** 15" SUBBASE OF DENSE GRADED CRUSHED STONE
 - *** 6" SAND BORROW
- NOTES:**
- THE EMULSIFIED ASPHALT (RS-1H OR CRS-1H), SPECIAL PROVISION ITEM 900.683, SHALL BE APPLIED AT A RATE OF 0.03 GAL/SY JUST PRIOR TO THE PLACEMENT OF THE BITUMINOUS CONCRETE MIXTURE.
 - BITUMINOUS CONCRETE PAVEMENT WILL BE PAID UNDER ITEM 900.680 SPECIAL PROVISION (BITUMINOUS CONCRETE PAVEMENT, SMALL QUANTITY)



- NOTES:**
- SAWCUT REQUIRED AREA OF EXISTING CONCRETE RAMP PRIOR TO INSTALLATION OF DETECTABLE WARNING PANEL. THE PANEL SHALL BE CAST IN PLACE.
 - PAYMENT FOR SAWCUT WILL BE INCLUDED IN ITEM 618.10 PORTLAND CEMENT CONCRETE SIDEWALK, 5 INCH.

PROJECT NAME:	ARLINGTON	PLOT DATE:	2/19/2016
PROJECT NUMBER:	STP 0114 (4)	DRAWN BY:	LB
FILE NAME:	z09g052xsl.dgn	CHECKED BY:	J. READ
PROJECT LEADER:	J. READ	SHEET	8 OF 27
DESIGNED BY:	ABR		
TYPICAL SECTIONS			