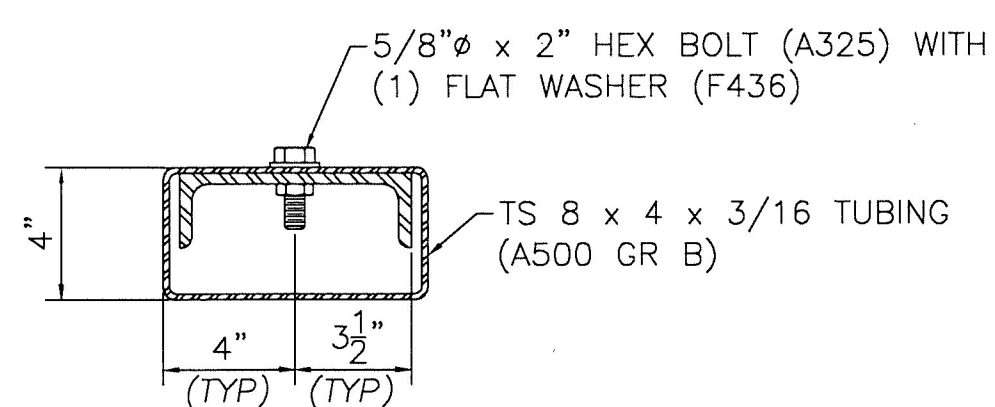
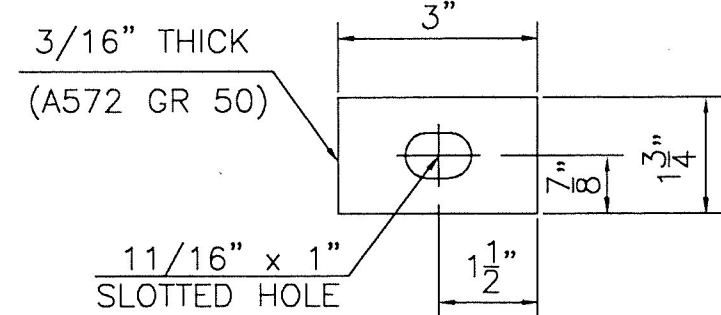


FASCIA MOUNTED POST WITH CURB
W6x25 (A572 GR 50)



PARTIAL SECTION B-B
SHOWING TUBE & SPLICE ONLY



SPECIAL WASHER DETAIL

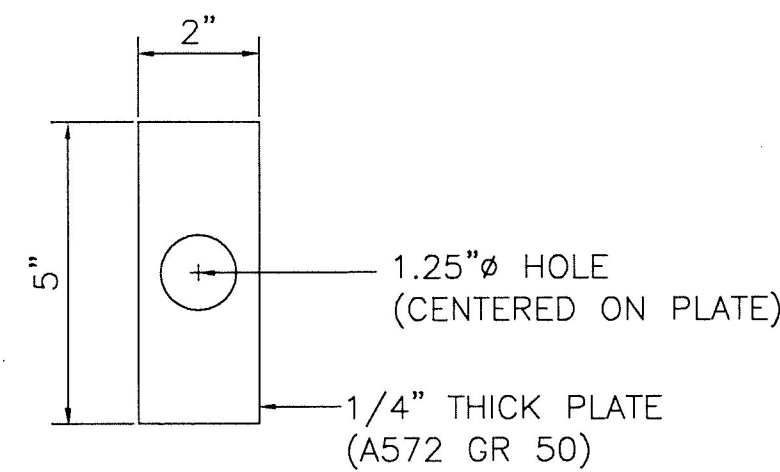
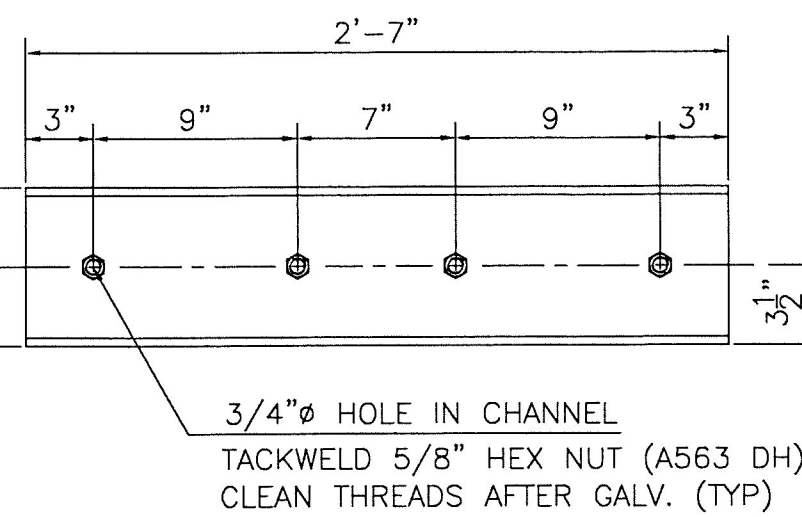
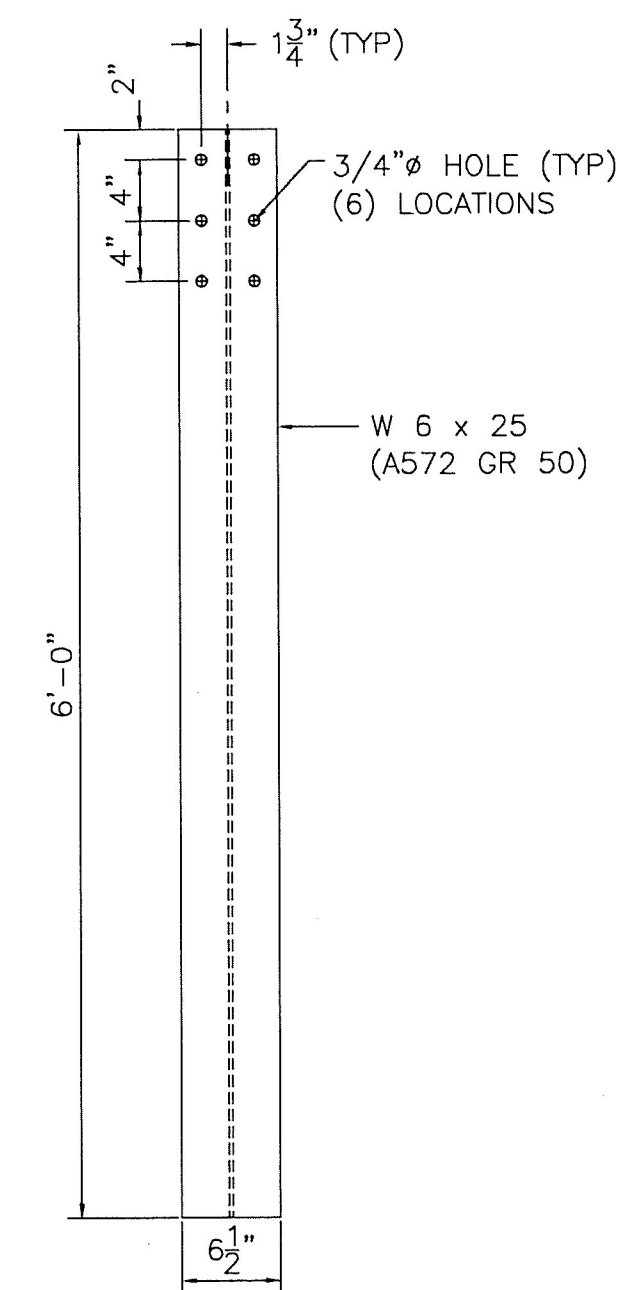


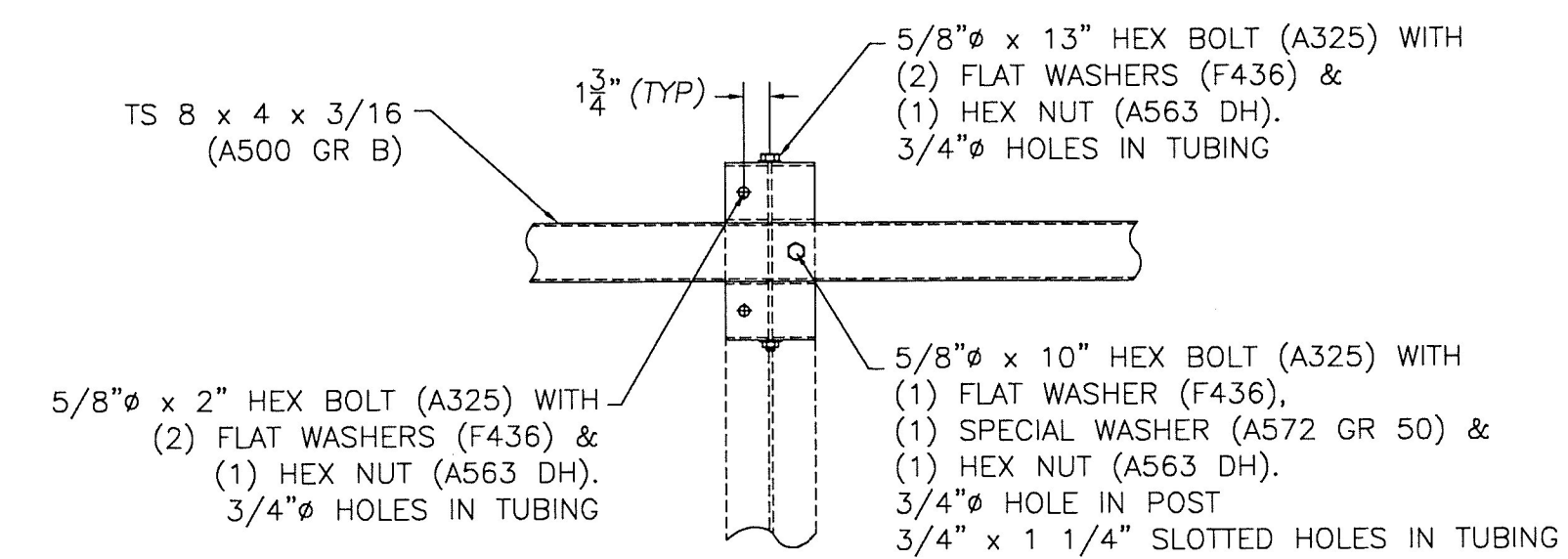
PLATE WASHER DETAIL



SPLICE BAR DETAIL



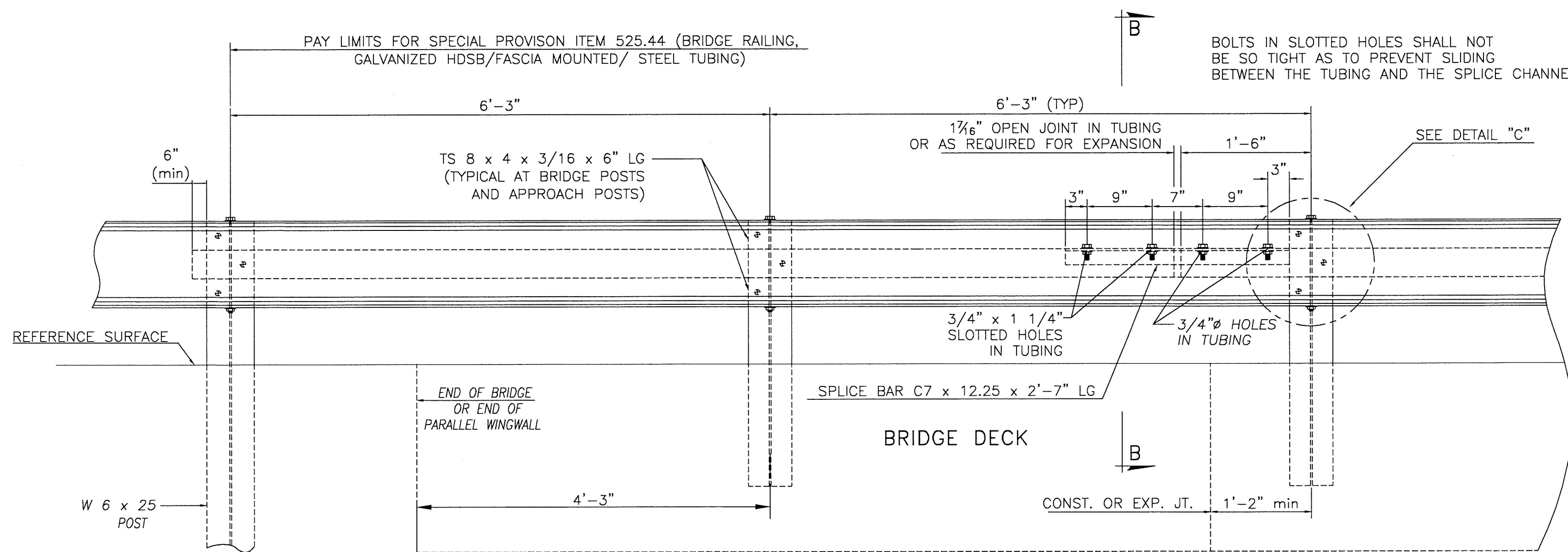
TRANSITION POST
W6x25 (A572 GR 50)



DETAIL "C"
STEEL BEAM GUARD RAIL NOT SHOWN

NOTES

1. ALL WORK AND MATERIALS SHALL CONFORM TO SECTION 525
2. ALL RAILING COMPONENTS INCLUDING BUT NOT LIMITED TO BRIDGE RAILING, STEEL TUBING, RAIL POSTS, SPLICE BAR, NUTS, WASHERS, BOLTS, U BOLTS AND ANY NECESSARY SHIMS SHALL BE PAID FOR UNDER ITEM 525.44 BRIDGE RAILING, GALVANIZED HDSB/FASCIA MOUNTED/STEEL TUBING.
3. ALL EXPOSED CUT OR SHEARED EDGES SHALL BE ROUNDED TO A $\frac{1}{8}$ " RADIUS AND BE FREE OF BURRS. ALL RAILING COMPONENTS ARE TO BE GALVANIZED IN ACCORDANCE WITH STANDARD SPECIFICATION SUBSECTION 726.08.
4. RAIL POSTS SHALL BE SET NORMAL TO GRADE.
5. THE FABRICATOR SHALL SUBMIT FABRICATION DRAWINGS INCLUDING WELDING PROCEDURES TO THE STRUCTURES ENGINEER FOR APPROVAL. ALL WELDING SHALL CONFORM TO STANDARD SPECIFICATION SUBSECTION 506.10.
6. SEE STANDARD DRAWING G-1 AND G-1D FOR ADDITIONAL DETAILS.
7. SEE STANDARD DRAWING S-367B FOR APPROACH RAIL DETAILS.
8. SPLICES FOR THE STEEL BEAM GUARDRAIL SHALL LAP IN THE DIRECTION OF TRAFFIC.
9. SEE STANDARD G-1 FOR DETAILS OF DELINEATORS. A DELINEATOR SHALL BE LOCATED AT EVERY FIFTH POST (INCIDENTAL TO ITEM 525.44).
10. A RAILING JOINT SPLICE SHALL BE PROVIDED AT THE SUPERSTRUCTURE EXPANSION JOINT.
11. ALL WORK SHOWN ON THIS SHEET SHALL BE INCLUDED IN THE COST OF ITEM 525.44 BRIDGE RAILING, GALVANIZED HDSB/ FASCIA MOUNTED/ STEEL TUBING.



RAILING ELEVATION VIEW
(SHOWN LOOKING FROM CL WITHOUT CURB)

Vermont Agency of Transportation

RECEIVED

ON: **January 14, 2016**

and Checked for

CONFORMANCE

BY: **ABC** DATE:

HIGHWAY SAFETY CORP

GLASTONBURY, CT
860-633-9445

ITEM 525.44 BRIDGE RAILING
GALVANIZED HDSB/FASCIA MOUNTED/ STEEL TUBING
BRIDGE IMPROVEMENT
TH 10 OVER OTTER CREEK
BRIDGE 17 - BRF 3000(19)
CITY OF RUTLAND, VT - RUTLAND COUNTY

CERTIFIED FABRICATOR

GENERAL CONTRACTOR
SUB CONTRACTOR
DRAWN
MKT

HSC JOB NO.
2065
SHEET NO.
5 of 6

DATE 11-20-15 SCALE NONE SIZE D