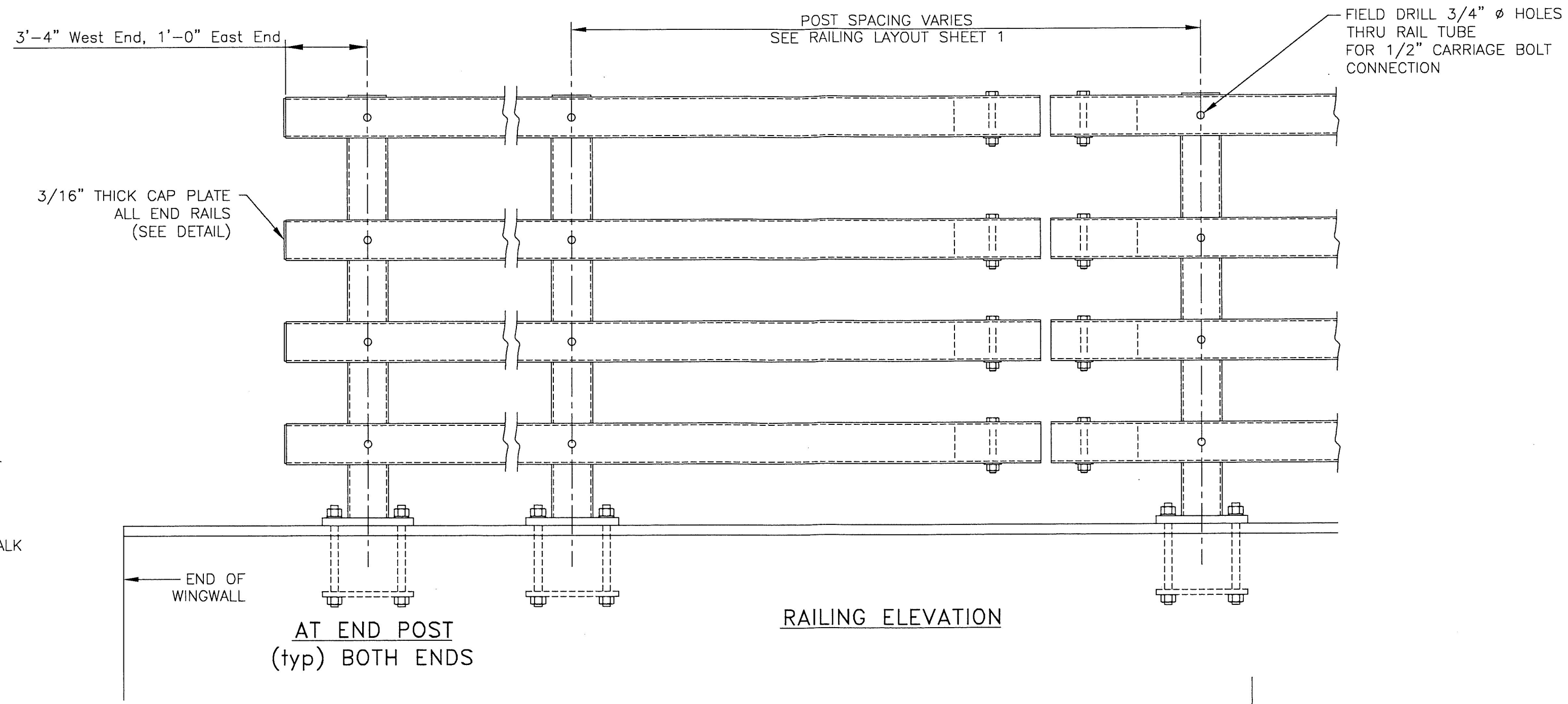
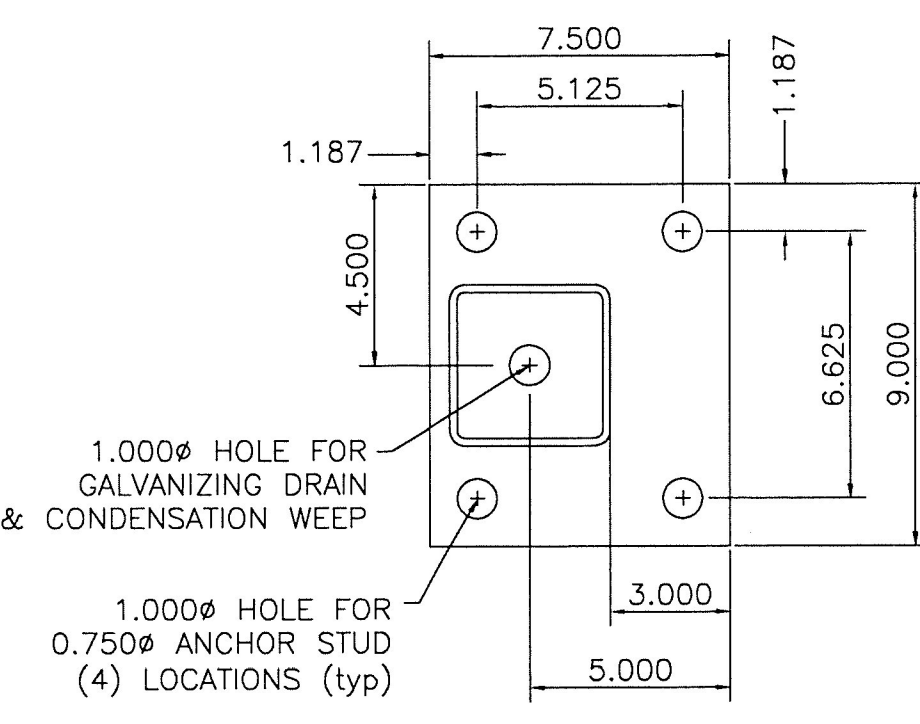


RAILING SECTION

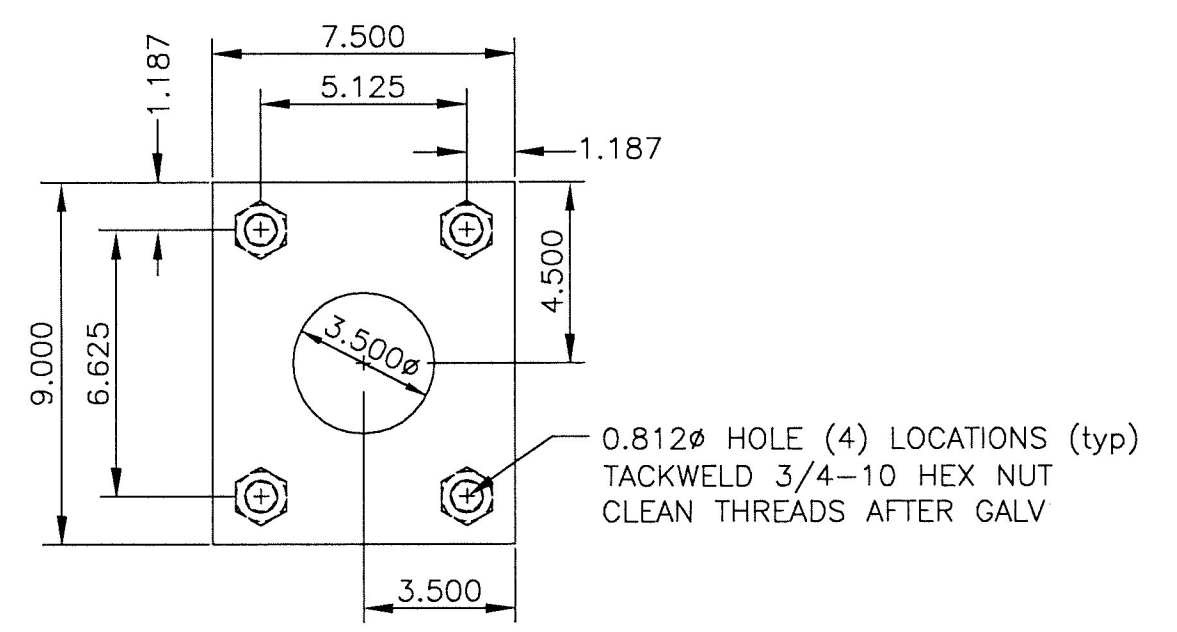


RAILING ELEVATION

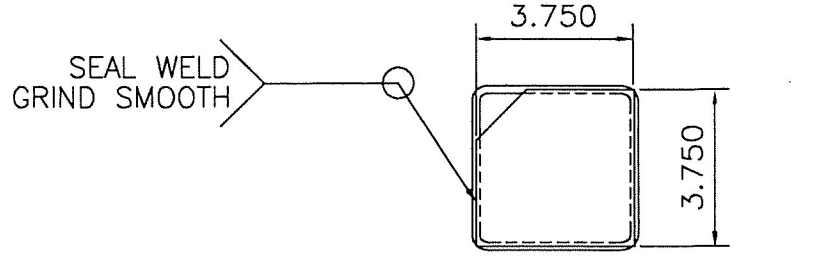
AT END POST  
(typ) BOTH ENDS



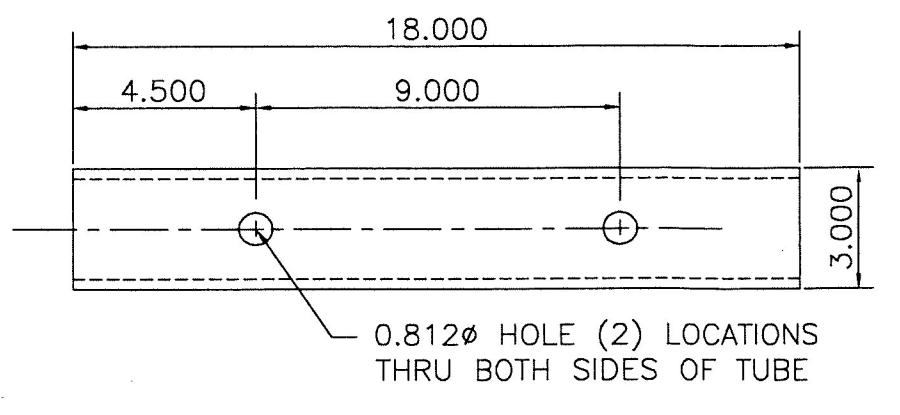
SECTION THRU POST  
AT BASE PLATE  
PL 0.750 x 7.500 x 9.000  
(A36)



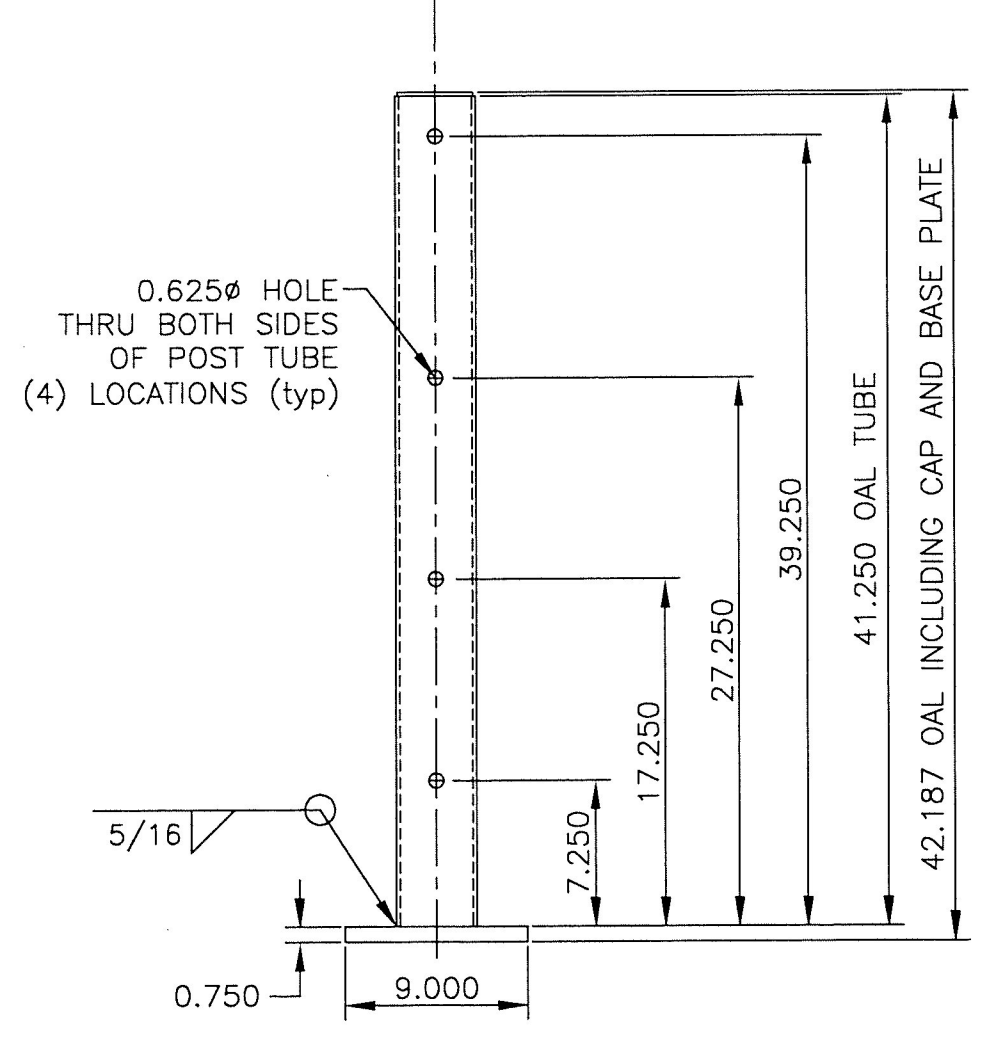
ANCHOR PLATE DETAIL  
PL 0.500 x 7.500 x 9.000  
(A36)



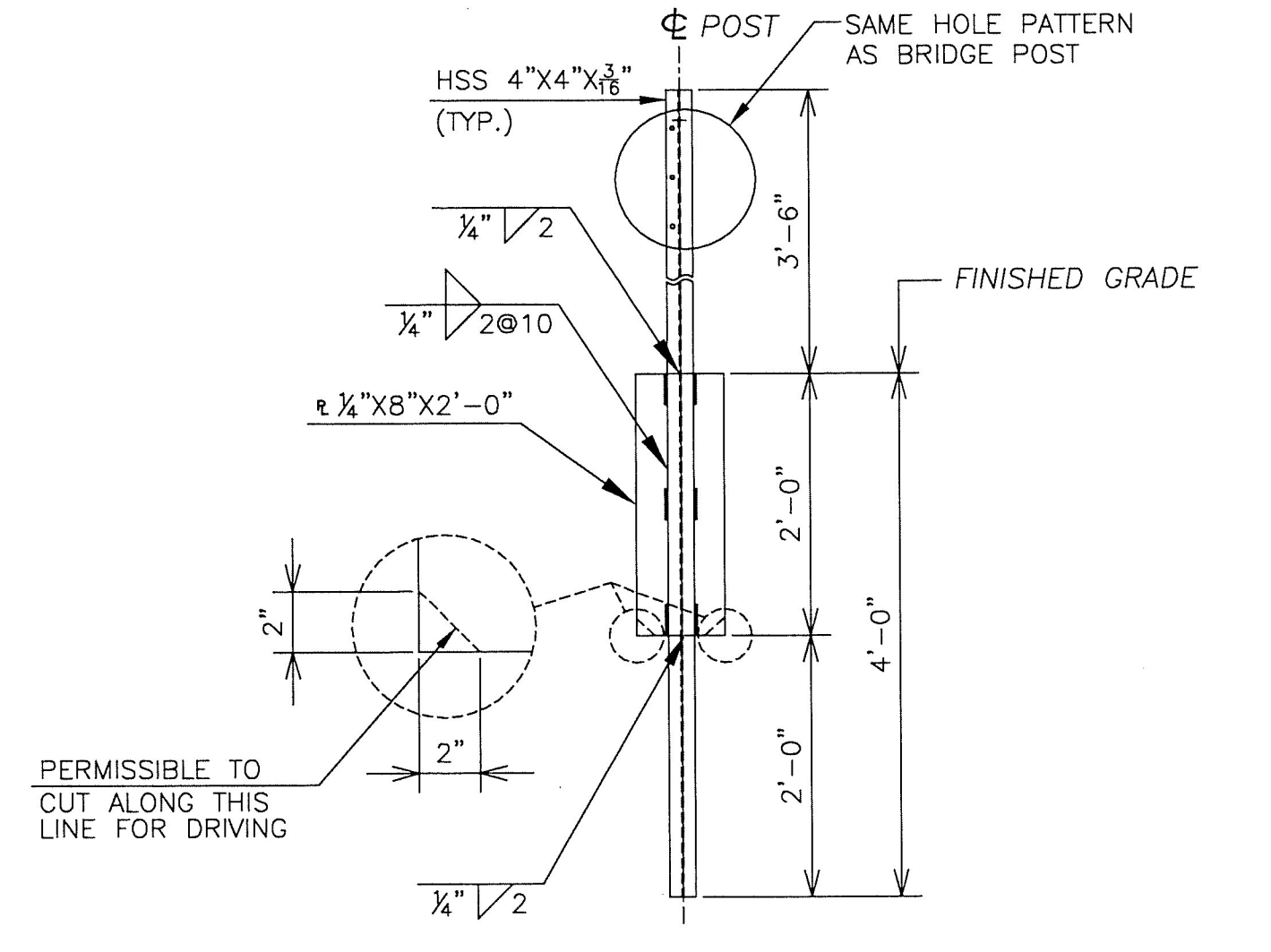
END CAP DETAIL  
PL 0.187 x 3.750 x 3.750  
(A36)  
USE AT ALL RAIL TERMINATIONS  
AND POST CAPS  
CLIP CORNER OF CAP PLATES  
1.250 FOR GALV VENT



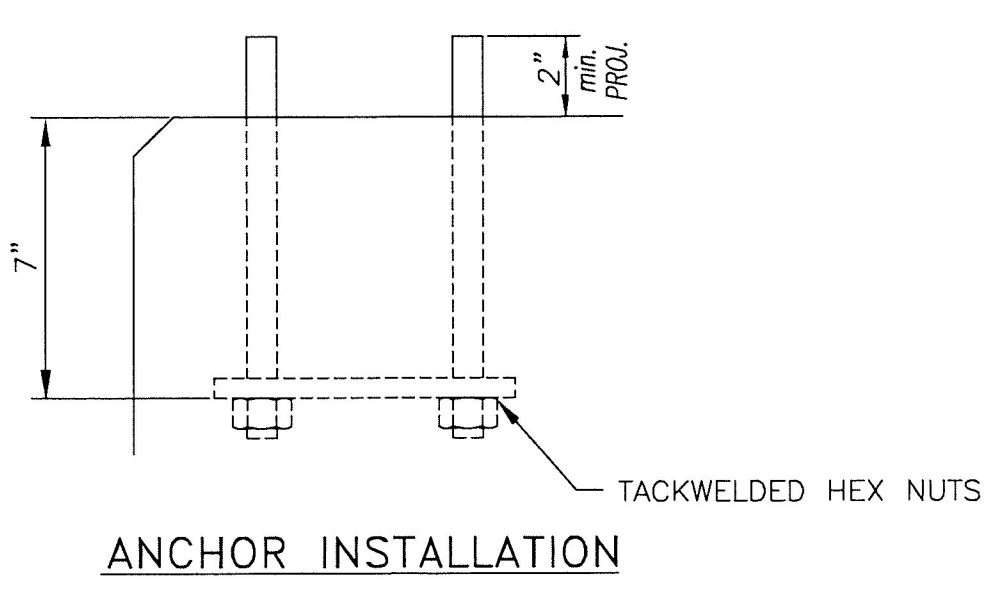
SPLICE TUBE DETAIL  
TS 3 x 3 x 1/4  
(A500 gr B)



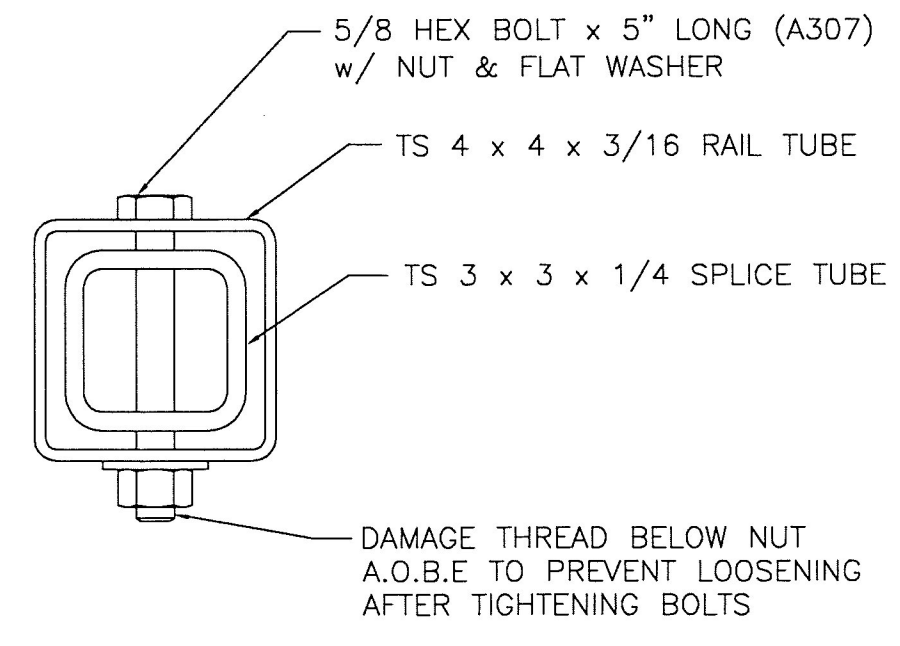
POST DETAIL  
ALL POSTS WELDED PERPENDICULAR TO BASE PLATES



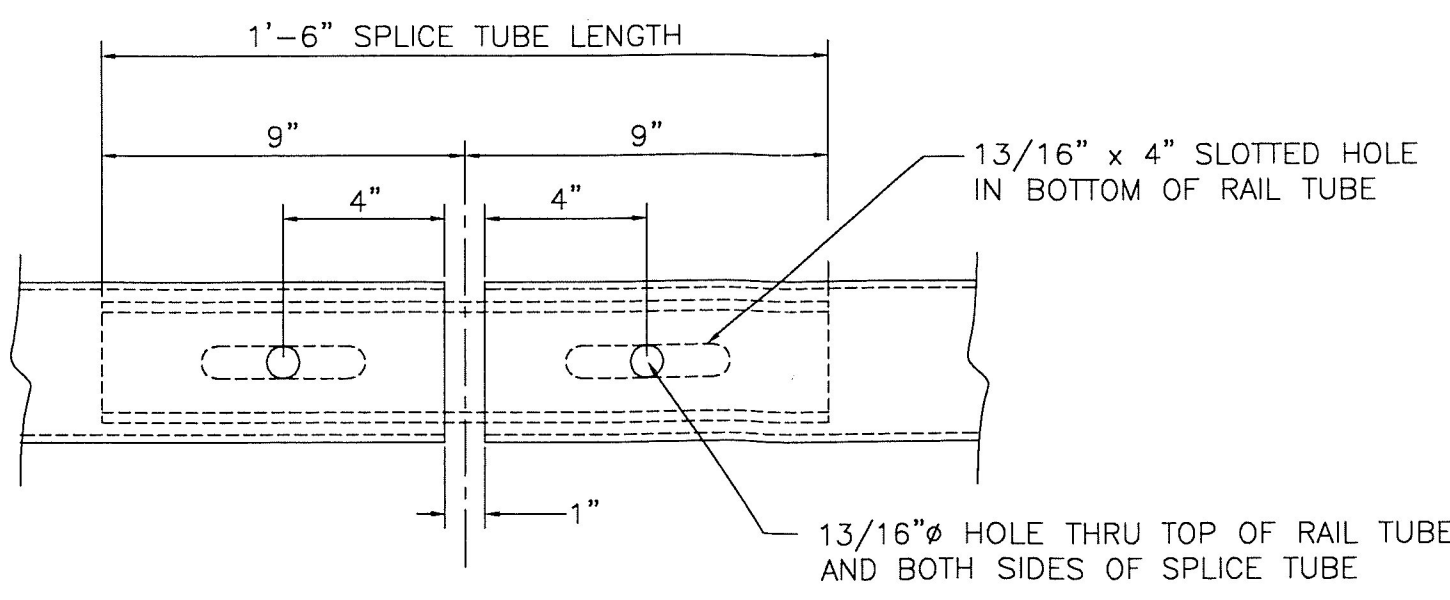
SOIL POST DETAIL



ANCHOR INSTALLATION



SECTION THRU RAIL TUBE  
AT SPLICE JOINT  
SEE SPLICE TUBE DETAIL



RAIL SPLICE ASSEMBLY  
PLAN VIEW  
SEE SPLICE TUBE DETAIL

PEDESTRIAN RAILING NOTES:

1. ALL WORK AND MATERIALS SHALL CONFORM TO STANDARD SPECIFICATION SECTION 525
2. ALL RAILING COMPONENTS, INCLUDING, BUT NOT LIMITED TO, TUBULAR STEEL RAILS, RAIL POSTS, NUTS AND WASHERS, CARRIAGE BOLTS, BASE PLATE ASSEMBLIES, ANCHOR BOLTS, ANCHOR PLATES, ANY NECESSARY SHIMS AND MORTAR PADS SHALL BE PAID FOR UNDER ITEM 900.640 SPECIAL PROVISION (BRIDGE RAILING, STEEL/PEDESTRIAN).
3. ALL EXPOSED CUT OR SHEARED EDGES SHALL BE ROUNDED TO A 1/8" RADIUS AND BE FREE OF BURRS. ALL RAILING COMPONENTS ARE TO BE GALVANIZED IN ACCORDANCE WITH STANDARD SPECIFICATION SUBSECTION 726.08
4. RAIL POSTS SHALL BE SET NORMAL TO GRADE
5. ANY BENDING OF RAIL SHALL BE BY SHOP PROCEDURE ONLY.
6. THE FABRICATOR SHALL SUBMIT FABRICATION DRAWINGS INCLUDING WELDING PROCEDURES TO THE STRUCTURES ENGINEER FOR APPROVAL. ALL WELDING SHALL CONFORM TO STANDARD SPECIFICATION SUBSECTION 506.10.
7. AFTER THE ANCHOR STUD NUTS HAVE BEEN PLACED AND TIGHTENED TO THE SATISFACTION OF THE RESIDENT ENGINEER, THE STUDS SHALL BE CUT OFF 1" ABOVE THE NUT AND THE THREADS DAMAGED.
8. RAIL SHALL SPAN A MINIMUM OF 3 POSTS, EXCEPT AT THE END SECTIONS WHERE THE RAIL MAY SPAN A MINIMUM OF 2 POSTS.

Vermont Agency of Transportation  
**RECEIVED**  
ON: January 14, 2016  
and Checked for  
**CONFORMANCE**  
BY: ABC DATE:

		GLASTONBURY, CT 860-633-9445	
900.640 SPECIAL PROVISION (BRIDGE RAILING, STEEL/ PEDESTRIAN) BRIDGE IMPROVEMENT TH 10 OVER OTTER CREEK BRIDGE 17 - BRF 3000(19) CITY OF RUTLAND, VT - RUTLAND COUNTY			
GENERAL CONTRACTOR		HSC JOB NO. 2065	
SUB CONTRACTOR LAFAYETTE		SHEET NO. 4 of 6	
DRAWN MKT	CHECKED	DATE 11-20-15	SCALE NONE SIZE D