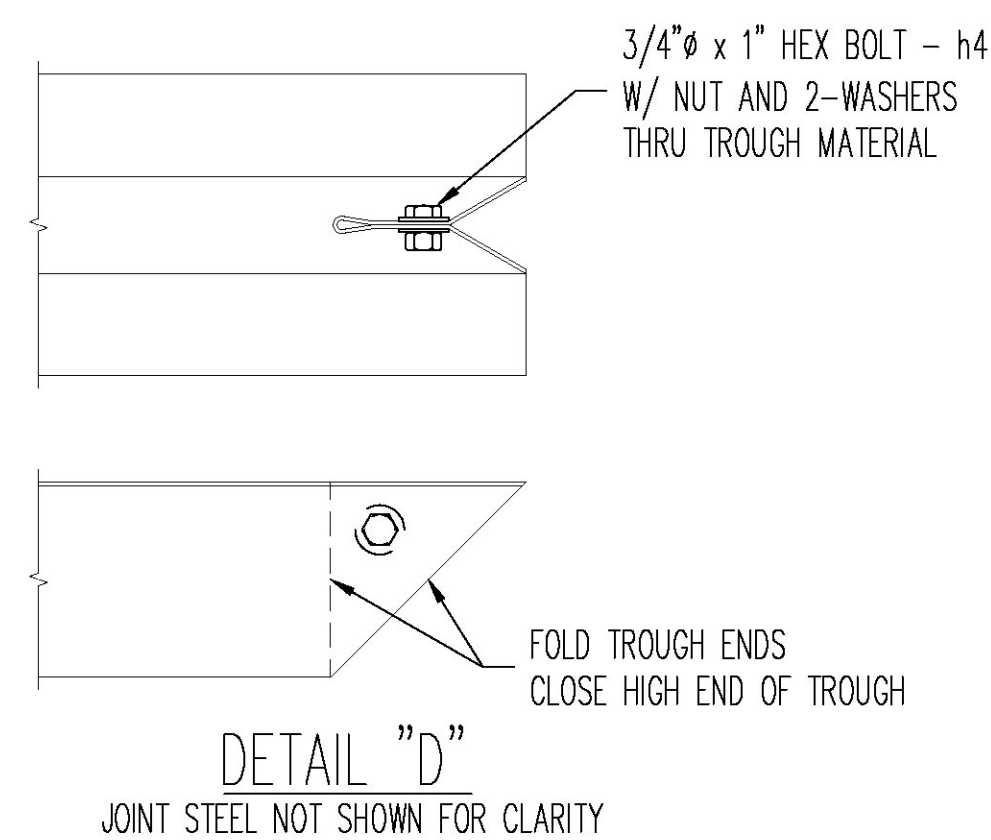
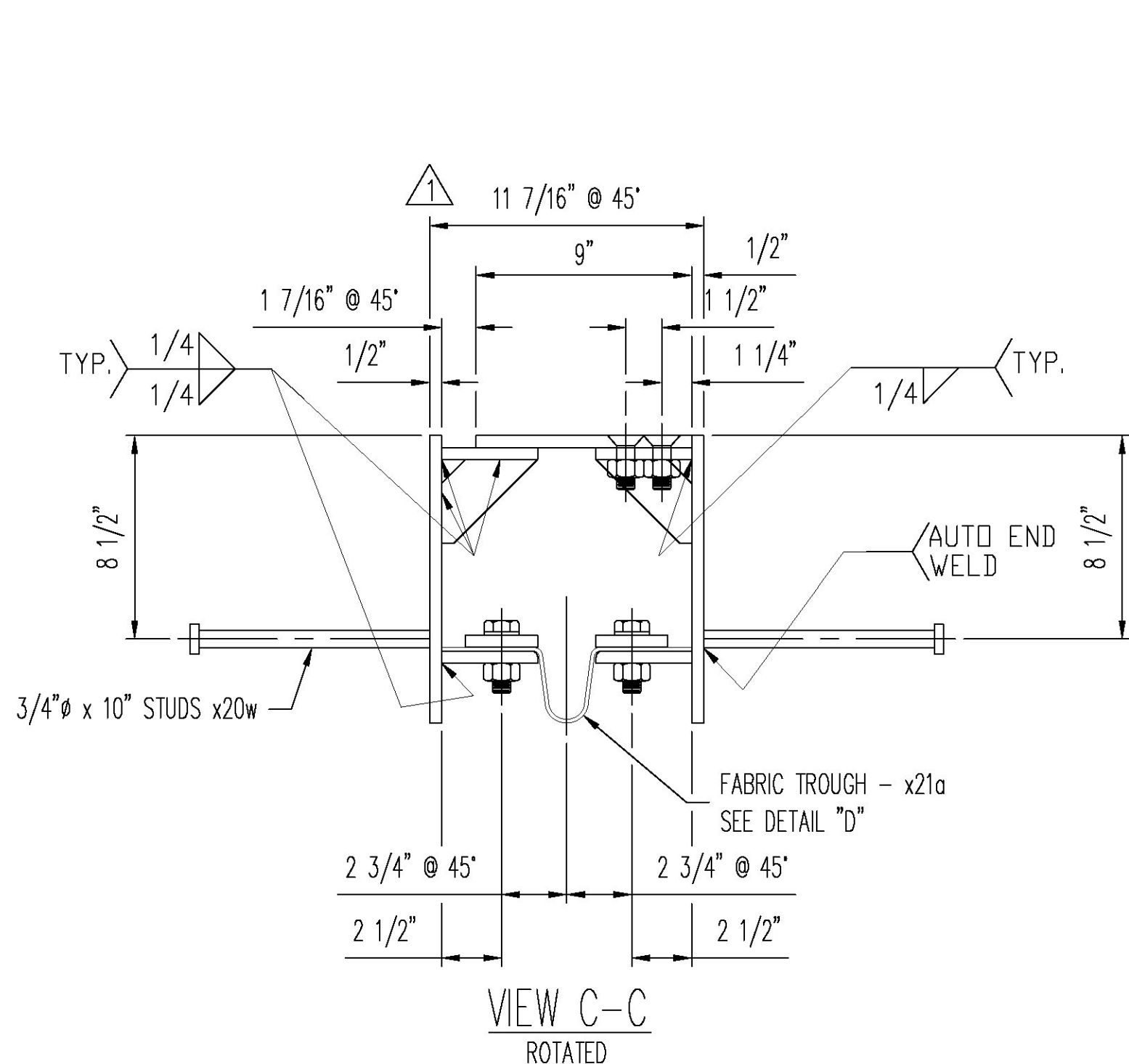
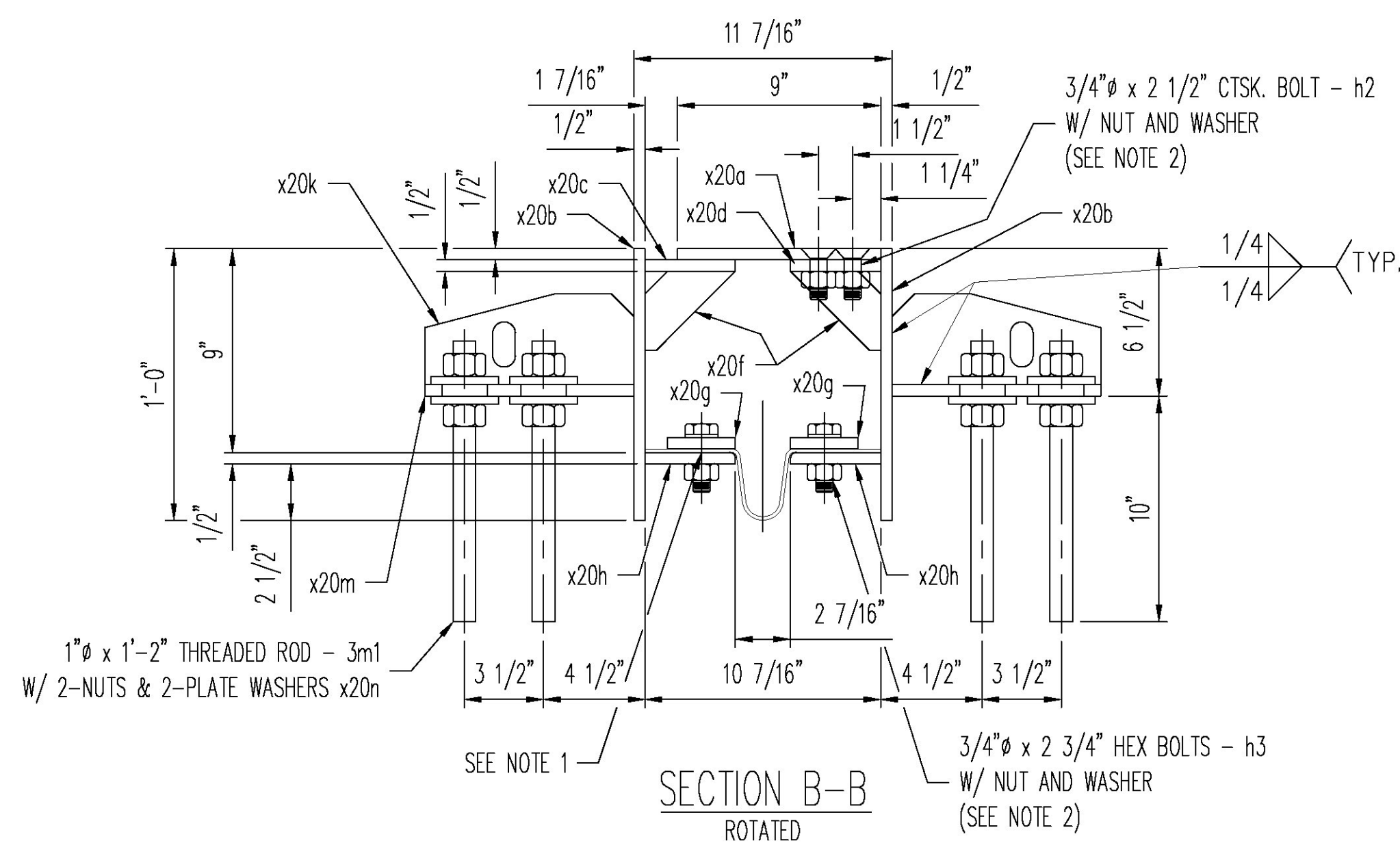


1 ~ EXPANSION JOINT ASSEMBLY ~ 103JA1



Vermont Agency of Transportation
RECEIVED
 ON: **April 12, 2016**
 and Checked for
CONFORMANCE
 BY: **ABC** DATE:

NOTE:
 1.) 1/16" x 3" BUTYL RUBBER TAPE MK h1 PER AASHTO M198 CENTERED ON EACH LINE OF BOLTS AND PLACED BETWEEN PLATE AND FABRIC.
 2.) WELD NUTS UNDERNEATH ON (3) SIDES COAT BOLT & NUT THREADS WITH NICKEL BASED NEVER SEIZE LUBE.

BILL OF MATERIAL

| BLOCK QTY. | BLOCK NO. | MARK | NO. PCS | SHAPE | LENGTH FT | IN | REMARKS |
|------------|-----------|--------|---------|--------------------|-----------|-------|--------------------|
| | 1 | 103JA1 | ONE | PLATE JOINT | 6 | 10 | GALV |
| | 2 | x20a | 1 | PL 1/2 X 9 | 6 | 10 | GALV |
| | 3 | x20b | 2 | PL 1/2 X 12 | 6 | 10 | GALV |
| | 4 | x20c | 1 | PL 1/2 X 4 | 6 | 10 | GALV |
| | 5 | x20d | 1 | PL 1/2 X 4 | 6 | 10 | GALV |
| | 6 | x20f | 14 | PL 1/2 X 3 1/2 | 0 | 4 | GALV |
| | 7 | x20g | 2 | PL 1/2 X 3 | 6 | 10 | GALV |
| | 8 | x20h | 2 | PL 1/2 X 4 | 6 | 10 | GALV |
| | 9 | x20k | 4 | PL 1/2 X 4 | 0 | 9 1/4 | GALV |
| | 10 | x20m | 4 | PL 1/2 X 8 | 0 | 9 1/4 | GALV |
| | 11 | x20n | 32 | PL 3/8 X 3 | 0 | 3 | GALV |
| | 12 | x21a | 1 | NP 5/32 X 17 | 6 | 10 | FABRIC TROUGH |
| | 13 | x20w | 8 | 3/4 DIA STUD | 0 | 10 | HEADED STUD |
| | 14 | h1 | 2 | 1/16 X 3 TAPE | 6 | 10 | AASHTO M198 |
| | 15 | h2 | 27 | 3/4 DIA GALV BOLTS | 0 | 2 1/2 | CTSK HEAD W/ NUT |
| | 16 | h3 | 14 | 3/4 DIA GALV BOLTS | 0 | 2 3/4 | W/ NUT & WASHER |
| | 17 | h4 | 1 | 3/4 DIA GALV BOLTS | 0 | 1 | W/ NUT & 2-WASHERS |
| | 18 | 3m1 | 16 | 1" THRO. RODS | 1 | 2 | W/ 2-NUTS |
| | 19 | | | | | | |
| | 20 | | | | | | |

| | | | | | | |
|---|---------|-------------------------|----------------------|--------|-------------|------|
| 1 | 4/07/16 | REVISION PER APPROVAL | SLB | JEB | | |
| REV. | DATE | REMARKS | DWN | CHK | APVL | SHOP |
| MATERIAL: | | SURFACE PREP. & PAINT: | HOLES: | | SHOP BOLTS: | |
| M270M-250 U.N.O. | | GALV. - PER STD. 726.08 | AS NOTED | | AS NOTED | |
| DESCRIPTION: EXPANSION JOINT - ERECTION SHEET | | | | | | |
| CASCO BAY STEEL STRUCTURES, INC. | | | | | | |
| 1 WALLACE AVE. | | | PHONE (207) 780-6722 | | | |
| SOUTH PORTLAND, ME 04106 | | | FAX. (207) 780-6726 | | | |
| STRUCTURE: BRIDGE NO. 17 | | | | DRAWN: | DATE: | |
| TH 10 (RIPLEY ROAD) OVER OTTER CREEK | | | | SLB | 03/23/16 | |
| STATE OF VERMONT AGENCY OF TRANS. | | | | CHKD: | DATE: | |
| | | | | JEB | 03/23/16 | |
| LOCATION: RUTLAND CITY, VT | | | JOB NO. | | DWG NO. | |
| PROJ NO. BRF 3000(19) | | | 598 | | 103 | |
| CUSTOMER: KUBRICKY CONSTRUCTION CORP. | | | | | REV. 1 | |