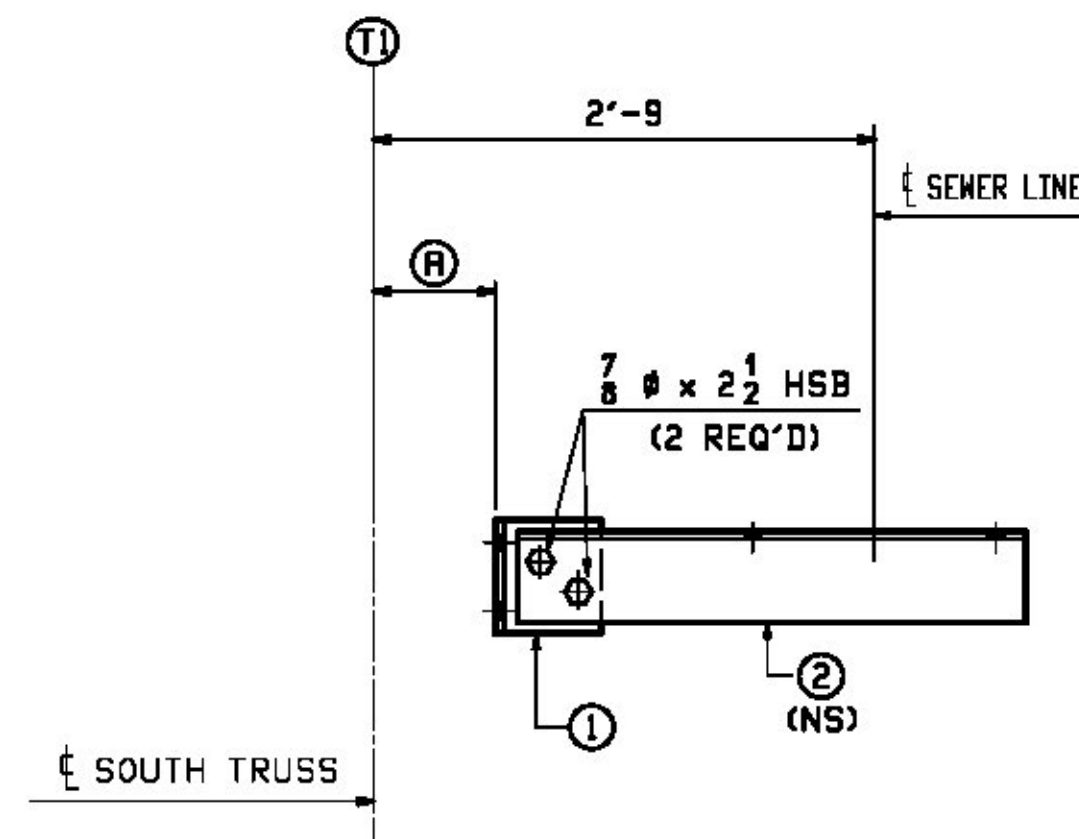


4 ~ BRACKETS ~ 27BK1
(SEWER LINE SUPPORT @ L0, L8, L9 & L19)



BRACKETS
(SEWER LINE SUPPORT)

MARK	REQ'D	ⓐ	ⓑ	ⓒ
(@ L14)	27BK2	1	8	x7ap x7ad
(@ L1, L3, L5, L7, L10, L18)	27BK3	6	7 3/4	x7ap x7af
(@ L12, L16)	27BK4	2	7 13/16	x7ap x7ag
(@ L2, L4, L6)	27BK5	3	8 1/4	x7as x7ah
(@ L11, L17)	27BK6	2	8 9/16	x7as x7ak
(@ L13, L15)	27BK7	2	9	x7as x7am

JOB NO.		DRAWING NO.		REV.		
598		27				
ROW	MARK	QTY	MATERIAL	REMARKS	MT	PROCUREMENT NOTES
	27BK5	3	BRACKETS	SEE NOTE "G"	66	
4	H	3	x7ah L 6x4x 1/2	2 8 1/2	45	
4	Y	3	x7as WT 7x30.5	0 7 1/2	19	
			SHOP BOLTS			
11	E	6	7/8" HSB	0 2 1/2	0.80	(MECH. GALV.)
11	Y	6	7/8" HSN		0.07	(MECH. GALV.)
11	Z	6	LOAD IND. 7 HSN FOR 8" HSB		0.07	(MECH. GALV.)
	27BK6	2	BRACKETS	SEE NOTE "G"	65	
4	H	2	x7ak L 6x4x 1/2	2 8 1/2	44	
4	Y	2	x7as WT 7x30.5	0 7 1/2	19	
			SHOP BOLTS			
11	E	4	7/8" HSB	0 2 1/2	0.80	(MECH. GALV.)
11	Y	4	7/8" HSN		0.07	(MECH. GALV.)
11	Z	4	LOAD IND. 7 HSN FOR 8" HSB		0.07	(MECH. GALV.)
	27BK7	2	BRACKETS	SEE NOTE "G"	65	
4	H	2	x7am L 6x4x 1/2	2 8 1/2	44	
4	Y	2	x7as WT 7x30.5	0 7 1/2	19	
			SHOP BOLTS			
11	E	4	7/8" HSB	0 2 1/2	0.80	(MECH. GALV.)
11	Y	4	7/8" HSN		0.07	(MECH. GALV.)
11	Z	4	LOAD IND. 7 HSN FOR 8" HSB		0.07	(MECH. GALV.)

JOB NO.		DRAWING NO.		REV.		
598		27				
ROW	MARK	QTY	MATERIAL	REMARKS	MT	PROCUREMENT NOTES
	27BK1	4	BRACKETS	SEE NOTE "G"	74	
4	H	4	x7ed L 6x4x 1/2	2 8 1/2	45	
4	X	4	x7en WT 7x30.5	0 10 1/2	27	CUT AS REQ'D
			SHOP BOLTS			
11	E	8	7/8" HSB	0 2 1/2	0.80	(MECH. GALV.)
11	Y	8	7/8" HSN		0.07	(MECH. GALV.)
11	Z	8	LOAD IND. 7 HSN FOR 8" HSB		0.07	(MECH. GALV.)
	27BK2	1	BRACKETS	SEE NOTE "G"	66	
4	H	1	x7ed L 6x4x 1/2	2 8 1/2	45	
4	Y	1	x7ep WT 7x30.5	0 7 1/2	19	CUT AS REQ'D
			SHOP BOLTS			
11	E	2	7/8" HSB	0 2 1/2	0.80	(MECH. GALV.)
11	Y	2	7/8" HSN		0.07	(MECH. GALV.)
11	Z	2	LOAD IND. 7 HSN FOR 8" HSB		0.07	(MECH. GALV.)
	27BK3	6	BRACKETS	SEE NOTE "G"	66	
4	H	6	x7ef L 6x4x 1/2	2 8 1/2	45	
4	Y	6	x7ep WT 7x30.5	0 7 1/2	19	CUT AS REQ'D
			SHOP BOLTS			
11	E	12	7/8" HSB	0 2 1/2	0.80	(MECH. GALV.)
11	Y	12	7/8" HSN		0.07	(MECH. GALV.)
11	Z	12	LOAD IND. 7 HSN FOR 8" HSB		0.07	(MECH. GALV.)
	27BK4	2	BRACKETS	SEE NOTE "G"	66	
4	H	2	x7eg L 6x4x 1/2	2 8 1/2	45	
4	Y	2	x7ep WT 7x30.5	0 7 1/2	19	CUT AS REQ'D
			SHOP BOLTS			
11	E	4	7/8" HSB	0 2 1/2	0.80	(MECH. GALV.)
11	Y	4	7/8" HSN		0.07	(MECH. GALV.)
11	Z	4	LOAD IND. 7 HSN FOR 8" HSB		0.07	(MECH. GALV.)

- NO EXCEPTION TAKEN
- MAKE CORRECTIONS NOTED
- REJECTED
- REVISE AND RESUBMIT
- SUBMIT SPECIFIED ITEM

CHECKING IS ONLY FOR THE GENERAL CONFORMANCE WITH THE DESIGN CONCEPT OF THE PROJECT AND GENERAL COMPLIANCE WITH THE INFORMATION GIVEN IN THE CONTRACT DOCUMENTS. ANY ACTION SHOWN IS SUBJECT TO THE REQUIREMENTS OF THE PLANS AND SPECIFICATIONS. CONTRACTOR IS RESPONSIBLE FOR DIMENSIONS WHICH SHALL BE CONFIRMED AND CORRELATED AT THE JOB SITE; FABRICATION PROCESSES AND TECHNIQUES OF CONSTRUCTION; COORDINATION OF HIS WORK WITH THAT OF ALL OTHER TRADES AND THE SATISFACTORY PERFORMANCE OF THE WORK.

DATE 1/29/2016 BY J. Najdowski

Vermont Agency of Transportation

RECEIVED

ON: **March 21, 2016**

and Checked for

CONFORMANCE

BY: **ABC** DATE:

SHOP NOTE "G"

ALL STEEL (EXCEPT FOR BOLTS) SHALL BE HOT DIP GALVANIZED IN ACCORDANCE WITH SUBSECTION 506.15. BOLTS AND WASHERS SHALL BE MECHANICALLY GALVANIZED IN ACCORDANCE WITH ASTM B695, CLASS 55.

NOTES:

- FOR GENERAL NOTES SEE DWG. G01.
- FOR STANDARD DETAILS SEE DWG. X7.
- SHOP BOLTS SHALL BE 1/2" A325-1. ALL BOLTS SHALL BE WITH ONE HARDENED WASHER AND ONE DTI WASHER. BOLTS AND WASHERS SHALL BE MECHANICALLY GALVANIZED.

REV.	DATE	REMARKS	DWN	CHK	APVL	SHOP
0						
MATERIAL:		SURFACE PREP. & PAINT:	HOLES:	SHOP BOLTS:		
M270-50 (UN)		SEE DWG. G01	15/16"	AS NOTED		
DESCRIPTION: UTILITY SUPPORTS						
STRUCTURE:		TH-10 OVER OTTER CREEK PONY TRUSS BRIDGE		DATE:	1/4/16	
DRAWN:		RB		DATE:	1/18/16	
CHECKED:		WJL				
LOCATION: RUTLAND CITY, VERMONT				JOB NO.	598	
PROJ NO. BR 3000 (19)				DWG NO.	27	
CUSTOMER: KUBRICKY CONSTRUCTION CORP.				REV.	A	

CASCO BAY STEEL STRUCTURES, INC.
1 WALLACE AVE. PHONE (207) 780-6722
SOUTH PORTLAND, ME 04106 FAX (207) 780-6726