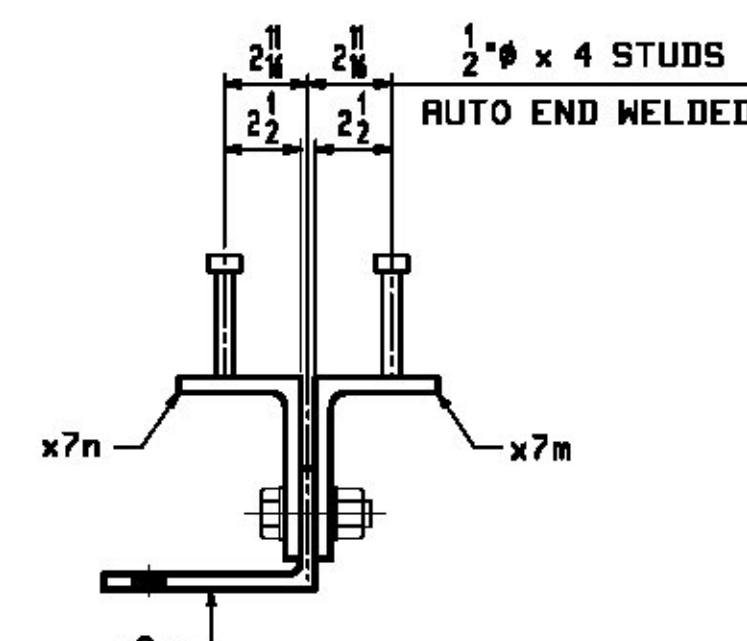


NO EXCEPTION TAKEN
 REJECTED
 MAKE CORRECTIONS NOTED
 REVISE AND RESUBMIT
 SUBMIT SPECIFIED ITEM

DATE 1/29/2016 BY J. Najdowski

CHECKING IS ONLY FOR THE GENERAL CONFORMANCE WITH THE DESIGN CONCEPT OF THE PROJECT AND GENERAL COMPLIANCE WITH THE INFORMATION GIVEN IN THE CONTRACT DOCUMENTS. ANY ACTION SHOWN IS SUBJECT TO THE REQUIREMENTS OF THE PLANS AND SPECIFICATIONS. CONTRACTOR IS RESPONSIBLE FOR DIMENSIONS WHICH SHALL BE CONFIRMED AND CORRELATED AT THE JOB SITE; FABRICATION PROCESSES AND TECHNIQUES OF CONSTRUCTION; COORDINATION OF HIS WORK WITH THAT OF ALL OTHER TRADES AND THE SATISFACTORY PERFORMANCE OF THE WORK.



Vermont Agency of Transportation
RECEIVED
 ON: **March 21, 2016**
 and Checked for
CONFORMANCE
 BY: **ABC** DATE:

SHOP NOTE 'G'

ALL STEEL (EXCEPT FOR BOLTS) SHALL BE HOT DIP GALVANIZED IN ACCORDANCE WITH SUBSECTION 506.15. BOLTS AND WASHERS SHALL BE MECHANICALLY GALVANIZED IN ACCORDANCE WITH ASTM B695, CLASS 55.

- NOTES:
- FOR GENERAL NOTES SEE DWG. G01.
 - FOR STANDARD DETAILS SEE DWG. X7 & X8.
 - SHOP BOLTS SHALL BE 1/2" A325-1. ALL BOLTS SHALL BE WITH ONE HARDENED WASHER AND ONE DTI WASHER. BOLTS AND WASHERS SHALL BE MECHANICALLY GALVANIZED.

BILL OF MATERIAL				JOB NO.	DRAWING NO.	REV.	
				598	24		
PAGE LINE	MARK	QTY	MATERIAL	LENGTH	REMARKS	MT	PROCUREMENT NOTES
				FT			
	24BK1	4	BRACKETS		SEE NOTE 'G'	403	
4	N	4	x7f L 6x4x 1/2	6 3		101	
4	N	4	x7g L 6x4x 1/2	6 3		101	
4	Q	4	x7p HT 7x30.5	0 6 1/2		17	
4	S	4	x7e HT 7x30.5	0 10 1/2	CUT AS REQ'D	27	
4	P	4	x8a L 4x4x 3/8	5 8 1/2		56	
4	P	4	x8b L 4x4x 3/8	5 8 1/2		56	
4	T	4	x8u PL 3/8x6	1 6 1/2		12	
4	U	4	x8y L 7x4x 3/8	1 5 1/2		20	
6	C	24	STUD 1/2"	0 4	RIB	0.28	
			SHOP BOLTS				
11	F	16	7/8" HSB	0 2 1/2	(MECH. GALV.) R325-1	0.80	
11	G	32	7/8" HSB	0 3	(MECH. GALV.) R325-1	0.80	
11	Y	48	7/8" HSN		(MECH. GALV.) F438	0.07	
11	Z	48	LOAD IND. 7/8" HSN FOR 8" HSB		(MECH. GALV.) F399	0.07	
			SHOP BOLTS				
	24BK2	3	BRACKETS		SEE NOTE 'G'	397	
4	N	3	x7m L 6x4x 1/2	6 4 1/2		102	
4	N	3	x7n L 6x4x 1/2	6 4 1/2		102	
4	Q	3	x7p HT 7x30.5	0 6 1/2		17	
4	R	3	x7ea HT 7x30.5	0 7 1/2		18	
4	P	3	x8m L 4x4x 3/8	5 8 1/2		56	
4	P	3	x8n L 4x4x 3/8	5 8 1/2		56	
4	T	3	x8u PL 3/8x6	1 6 1/2		12	
4	U	3	x8y L 7x4x 3/8	1 5 1/2		20	
6	C	18	STUD 1/2"	0 4	RIB	0.28	
			SHOP BOLTS				
11	F	12	7/8" HSB	0 2 1/2	(MECH. GALV.) R325-1	0.80	
11	G	24	7/8" HSB	0 3	(MECH. GALV.) R325-1	0.80	
11	Y	36	7/8" HSN		(MECH. GALV.) F438	0.07	
11	Z	36	LOAD IND. 7/8" HSN FOR 8" HSB		(MECH. GALV.) F399	0.07	

REV.	DATE	REMARKS	DWN	CHK	APVL	SHOP
0						
MATERIAL:		SURFACE PREP. & PAINT:	HOLES:		SHOP BOLTS:	
M270-50 (UN)		SEE DWG. G01	15 16		AS NOTED	
DESCRIPTION: BRACKET DETAILS						
		CASCO BAY STEEL STRUCTURES, INC. 1 WALLACE AVE. PHONE (207) 780-6722 SOUTH PORTLAND, ME 04106 FAX. (207) 780-6726				
STRUCTURE: TH-10 OVER OTTER CREEK PONY TRUSS BRIDGE				DRAWN:	DATE:	
				RB	1/4/16	
				CHKD:	DATE:	
				WJL	1/18/16	
LOCATION: RUTLAND CITY, VERMONT				JOB NO.	DWG NO.	
PROJ NO. BRF 3000 (19)				598	24	
CUSTOMER: KUBRICKY CONSTRUCTION CORP.						REV.