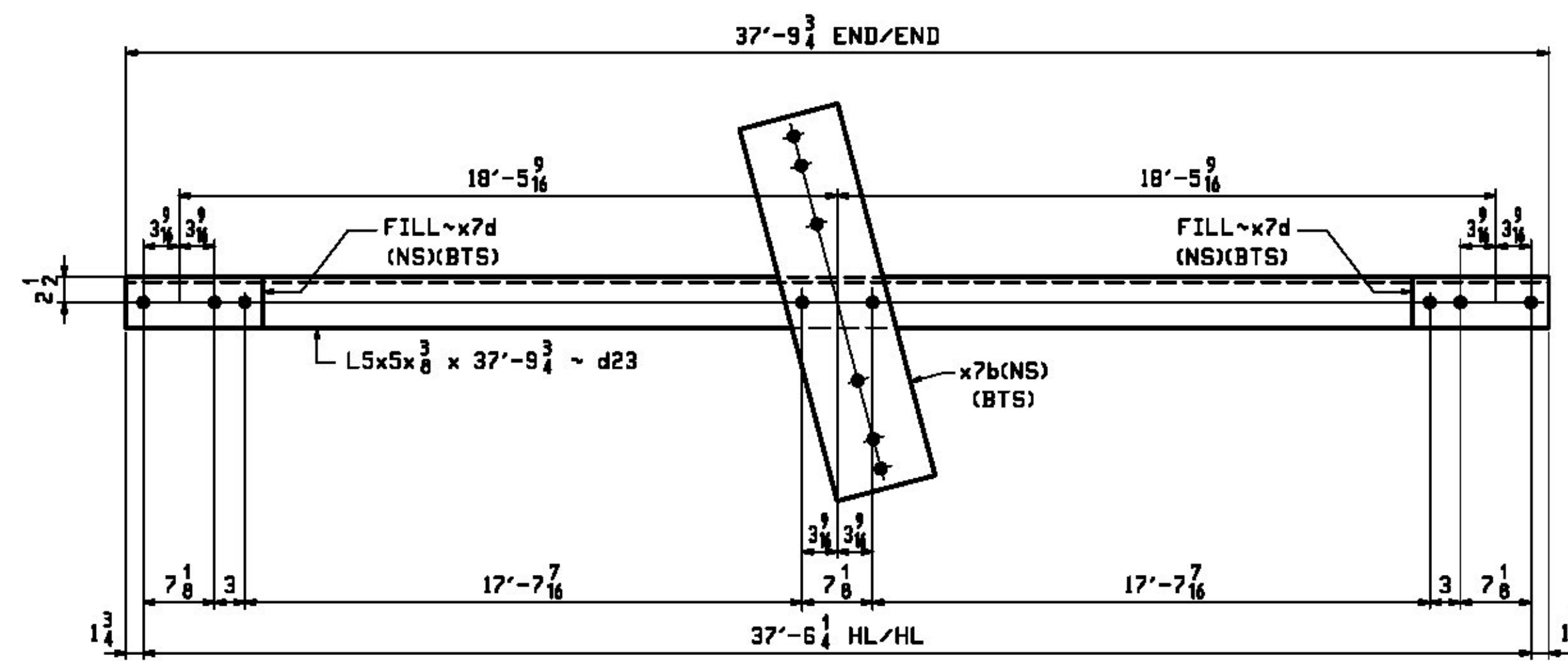


2 ~ DIAGONALS ~ 23LB1
(LATERAL BRACING @ BOTTOM OF FLBM IN SPAN 1)



2 ~ DIAGONALS ~ 23LB4
(LATERAL BRACING @ BOTTOM OF FLBM IN SPAN 2)

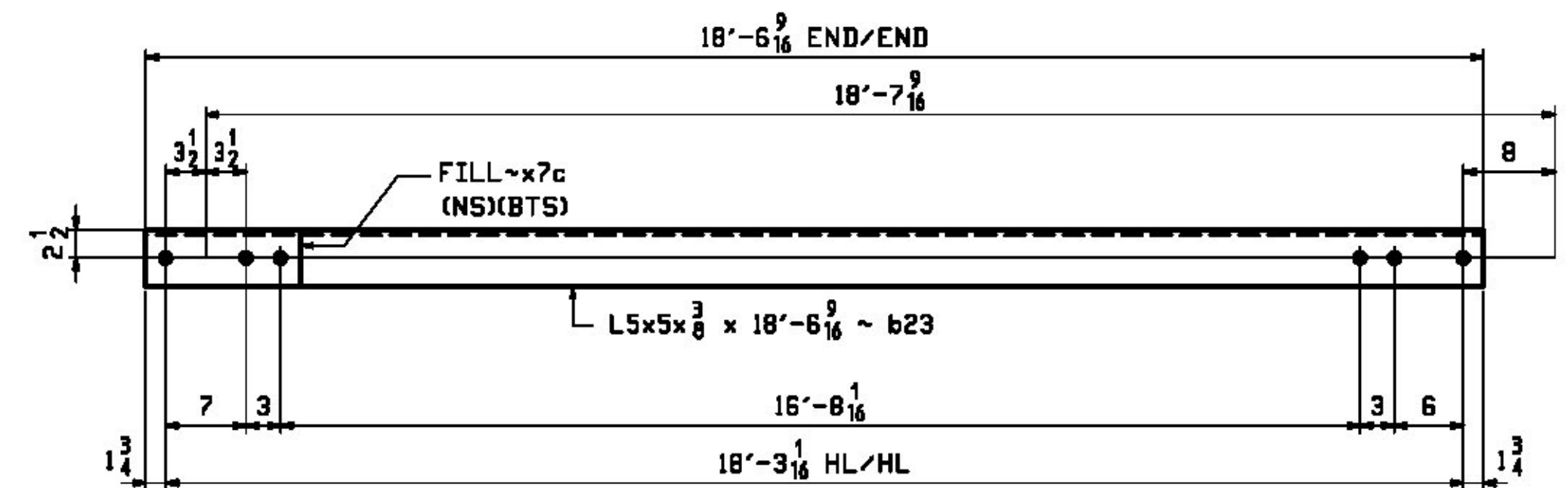
- NO EXCEPTION TAKEN
- REJECTED
- MAKE CORRECTIONS NOTED
- REVISE AND RESUBMIT
- SUBMIT SPECIFIED ITEM

CHECKING IS ONLY FOR THE GENERAL CONFORMANCE WITH THE DESIGN CONCEPT OF THE PROJECT AND GENERAL COMPLIANCE WITH THE INFORMATION GIVEN IN THE CONTRACT DOCUMENTS. ANY ACTION SHOWN IS SUBJECT TO THE REQUIREMENTS OF THE PLANS AND SPECIFICATIONS. CONTRACTOR IS RESPONSIBLE FOR DIMENSIONS WHICH SHALL BE CONFIRMED AND CORRELATED AT THE JOB SITE; FABRICATION PROCESSES AND TECHNIQUES OF CONSTRUCTION; COORDINATION OF HIS WORK WITH THAT OF ALL OTHER TRADES AND THE SATISFACTORY PERFORMANCE OF THE WORK.

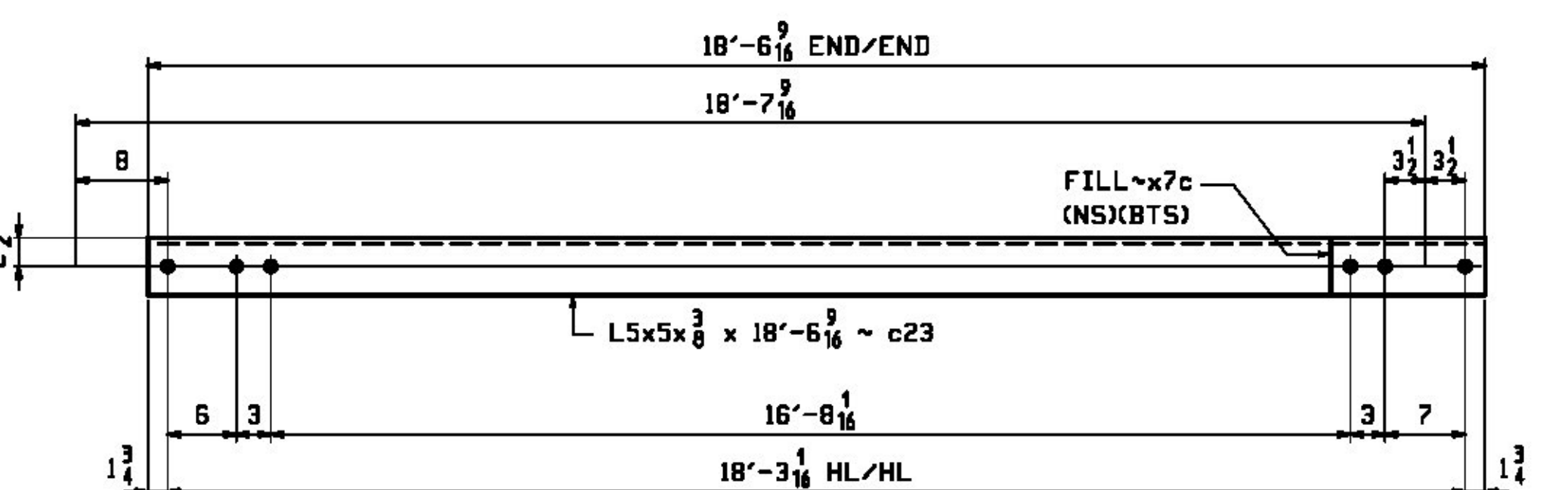


DATE 1/29/2016 BY J. Najdowski

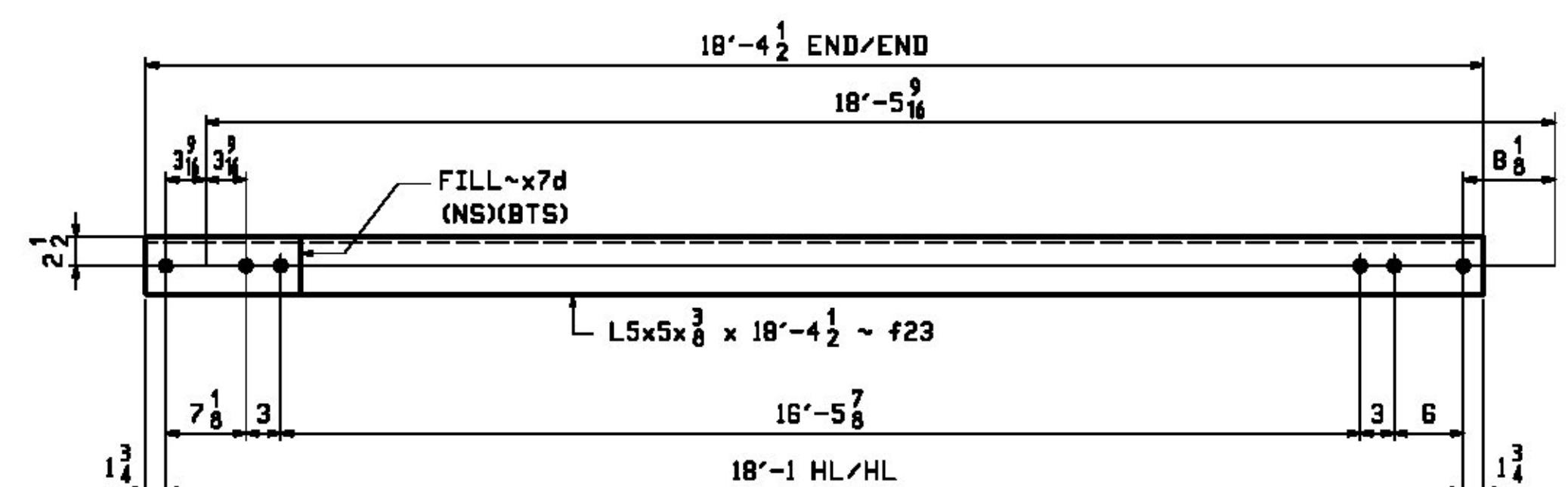
Vermont Agency of Transportation
RECEIVED
ON: March 21, 2016
and Checked for
CONFORMANCE
BY: ABC DATE:



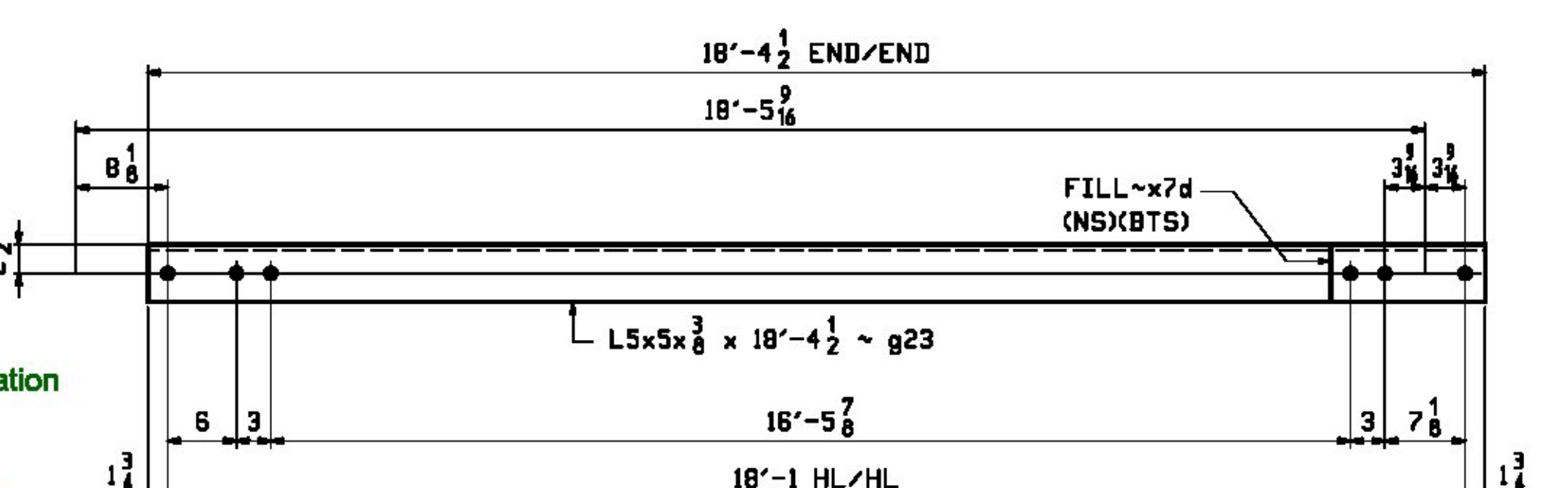
2 ~ DIAGONALS ~ 23LB2
(LATERAL BRACING @ BOTTOM OF FLBM IN SPAN 1)



2 ~ DIAGONALS ~ 23LB3
(LATERAL BRACING @ BOTTOM OF FLBM IN SPAN 1)



2 ~ DIAGONALS ~ 23LB5
(LATERAL BRACING @ BOTTOM OF FLBM IN SPAN 2)



2 ~ DIAGONALS ~ 23LB6
(LATERAL BRACING @ BOTTOM OF FLBM IN SPAN 2)

BILL OF MATERIAL					JOB NO.	DRAWING NO.	REV.	
					598	23		
PAGE/LINE	MARK	QTY	MARK	MATERIAL	LENGTH	REMARKS	MT	PROCUREMENT NOTES
					FT			
	23LB1	2		DIAGONALS		SEE NOTE "G"		541
5	B	2	a23	L 5x5x 3/8	38 1 5/8	M270-SGT2	468	
5	H	2	x7e	PL 1/2x10	3 2	M270-SGT2	54	
5	J	4	x7c	PL 1/2x5	1 1 1/2	FILL	10	
	23LB2	2		DIAGONALS		SEE NOTE "G"		237
5	C	2	b23	L 5x5x 3/8	18 6 9/16	M270-SGT2	228	
5	J	2	x7c	PL 1/2x5	1 1 1/2	FILL	10	
	23LB3	2		DIAGONALS		SEE NOTE "G"		237
5	C	2	c23	L 5x5x 3/8	18 6 9/16	M270-SGT2	228	
5	J	2	x7c	PL 1/2x5	1 1 1/2	FILL	10	
	23LB4	2		DIAGONALS		SEE NOTE "G"		538
5	E	2	d23	L 5x5x 3/8	37 9 3/4	M270-SGT2	464	
5	H	2	x7b	PL 1/2x10	3 2 1/2	M270-SGT2	54	
5	J	4	x7d	PL 1/2x5	1 5 1/8	FILL	10	
	23LB5	2		DIAGONALS		SEE NOTE "G"		235
5	F	2	f23	L 5x5x 3/8	18 4 1/2	M270-SGT2	226	
5	J	2	x7d	PL 1/2x5	1 5 1/8	FILL	10	
	23LB6	2		DIAGONALS		SEE NOTE "G"		235
5	F	2	g23	L 5x5x 3/8	18 4 1/2	M270-SGT2	226	
5	J	2	x7d	PL 1/2x5	1 5 1/8	FILL	10	

SHOP NOTE "G"

ALL STEEL SHALL BE HOT DIP GALVANIZED IN ACCORDANCE WITH SUBSECTION 506.15.

- NOTES:
- FOR GENERAL NOTES SEE DWG. GNI.
 - FOR STANDARD DETAILS SEE DWG. X7.
 - BTS DENOTES BOLT TO SHIP OR SECURE FOR SHIPMENT.

REV.	DATE	REMARKS	DWN	CHK	APVL	SHOP
0						
MATERIAL:		SURFACE PREP. & PAINT:		HOLES:		SHOP BOLTS:
M270-50		SEE DWG. GNI		15 16		NONE
DESCRIPTION: LATERAL BRACING						
			CASCO BAY STEEL STRUCTURES, INC. 1 WALLACE AVE. PHONE (207) 780-6722 SOUTH PORTLAND, ME 04106 FAX. (207) 780-6726			
STRUCTURE: TH-10 OVER OTTER CREEK PONY TRUSS BRIDGE				DRAWN:	DATE:	
				RB	12/23/15	
				CHKD:	DATE:	
				WJL	1/18/16	
LOCATION: RUTLAND CITY, VERMONT				JOB NO.	DWG NO.	
PROJ NO. BRF 3000 (19)				598	23	
CUSTOMER: KUBRICKY CONSTRUCTION CORP.						REV.