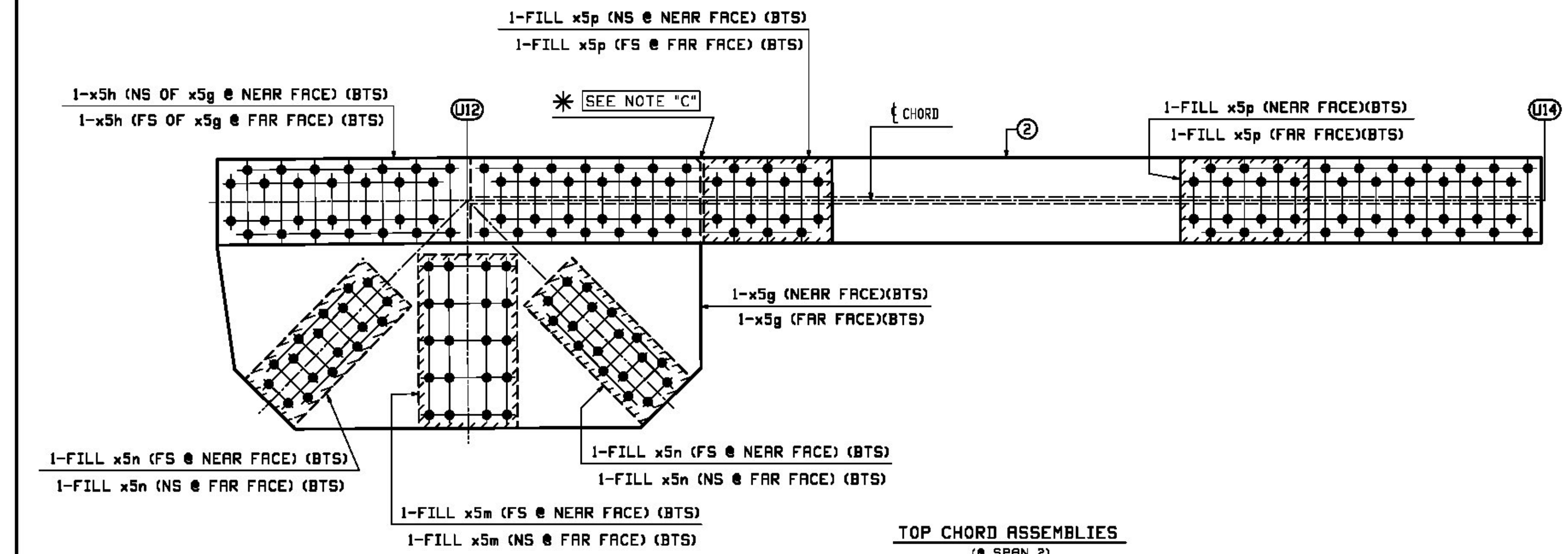


TOP CHORD ASSEMBLIES
(@ SPAN 2)

| MARK | REQ'D | ① |
|-----------|-------|-------|
| 10U10U12N | ONE | BTC4N |
| 10U10U12S | ONE | BTC4S |
| 10U18U16N | ONE | BTC7N |
| 10U18U16S | ONE | BTC7S |

(U10 - U12 NORTH)(LOOKING NORTH)
(U10 - U12 SOUTH)(LOOKING NORTH)
(U18 - U16 NORTH)(LOOKING SOUTH)
(U18 - U16 SOUTH)(LOOKING SOUTH)



TOP CHORD ASSEMBLIES
(@ SPAN 2)

| MARK | REQ'D | ② |
|-----------|-------|-------|
| 10U12U14N | ONE | BTC5N |
| 10U12U14S | ONE | BTC5S |

(U12 - U14 NORTH)(LOOKING NORTH)
(U12 - U14 SOUTH)(LOOKING NORTH)

* **SHOP NOTE "C"**
FOR PLATE ORIENTATION PLACE CLIP TOWARDS SIDE SHOWN.

* **SHOP NOTE "G"**
ALL STEEL (EXCEPT FOR BOLTS) SHALL BE HOT DIP GALVANIZED IN ACCORDANCE WITH SUBSECTION 506.15.

NO EXCEPTION TAKEN
 REJECTED
 MAKE CORRECTIONS NOTED
 REVISE AND RESUBMIT
 SUBMIT SPECIFIED ITEM

CHECKING IS ONLY FOR THE GENERAL CONFORMANCE WITH THE DESIGN CONCEPT OF THE PROJECT AND GENERAL COMPLIANCE WITH THE INFORMATION GIVEN IN THE CONTRACT DOCUMENTS. ANY ACTION SHOWN IS SUBJECT TO THE REQUIREMENTS OF THE PLANS AND SPECIFICATIONS. CONTRACTOR IS RESPONSIBLE FOR DIMENSIONS WHICH SHALL BE CONFIRMED AND CORRELATED AT THE JOB SITE; FABRICATION PROCESSES AND TECHNIQUES OF CONSTRUCTION; COORDINATION OF HIS WORK WITH THAT OF ALL OTHER TRADES AND THE SATISFACTORY PERFORMANCE OF THE WORK.



DATE 1/29/2016 BY J. Najdowski

Vermont Agency of Transportation

RECEIVED

ON: **March 21, 2016**

and Checked for

CONFORMANCE

BY: **ABC** DATE:

| BILL OF MATERIAL | | JOB NO. | DRAWING NO. | REV. | | | | |
|------------------|-----------|---------|-------------|------------------|---------------------|------------------|------|-------------------|
| | | 598 | 10 | | | | | |
| PAGE LINE | MARK | QTY | MARK | MATERIAL | LENGTH FT INCHES | REMARKS | MT | PROCUREMENT NOTES |
| | 10U10U12N | 1 | | TOP CHORD ASS'Y | | SEE NOTE "G" | 5632 | |
| | 1 | | BTC4N | TOP CHORD | | SEE DNG. 8 | 3814 | |
| 3 | B | 2 | x4k | PL 1/4 x 40 3/8 | 4 9 1/2 | M270-S0F2 (FCH) | 819 | |
| 3 | C | 2 | x4m | PL 7/8 x 14 5/8 | 2 2 1/2 | FILL BOLTS-S0 | 20 | |
| 3 | D | 2 | x4n | PL 1/8 x 10 | 2 1 | FILL BOLTS-S0 | 4 | |
| 3 | R | 2 | x5k | PL 1/2 x 12 5/8 | 3 0 1/2 | FILL | 65 | |
| | 10U10U12S | 1 | | TOP CHORD ASS'Y | | SEE NOTE "G" | 5632 | |
| | 1 | | BTC4S | TOP CHORD | | SEE DNG. 8 | 3814 | |
| 3 | B | 2 | x4k | PL 1/4 x 40 3/8 | 4 9 1/2 | M270-S0F2 (FCH) | 819 | |
| 3 | C | 2 | x4m | PL 7/8 x 14 5/8 | 2 2 1/2 | FILL BOLTS-S0 | 20 | |
| 3 | D | 2 | x4n | PL 1/8 x 10 | 2 1 | FILL BOLTS-S0 | 4 | |
| 3 | R | 2 | x5k | PL 1/2 x 12 5/8 | 3 0 1/2 | FILL | 65 | |
| | 10U18U16N | 1 | | TOP CHORD ASS'Y | | SEE NOTE "G" | 5632 | |
| | 1 | | BTC7N | TOP CHORD | | SEE DNG. 8 | 3814 | |
| 3 | B | 2 | x4k | PL 1/4 x 40 3/8 | 4 9 1/2 | M270-S0F2 (FCH) | 819 | |
| 3 | C | 2 | x4m | PL 7/8 x 14 5/8 | 2 2 1/2 | FILL BOLTS-S0 | 20 | |
| 3 | D | 2 | x4n | PL 1/8 x 10 | 2 1 | FILL BOLTS-S0 | 4 | |
| 3 | R | 2 | x5k | PL 1/2 x 12 5/8 | 3 0 1/2 | FILL | 65 | |
| | 10U18U16S | 1 | | TOP CHORD ASS'Y | | SEE NOTE "G" | 5632 | |
| | 1 | | BTC7S | TOP CHORD | | SEE DNG. 8 | 3814 | |
| 3 | B | 2 | x4k | PL 1/4 x 40 3/8 | 4 9 1/2 | M270-S0F2 (FCH) | 819 | |
| 3 | C | 2 | x4m | PL 7/8 x 14 5/8 | 2 2 1/2 | FILL BOLTS-S0 | 20 | |
| 3 | D | 2 | x4n | PL 1/8 x 10 | 2 1 | FILL BOLTS-S0 | 4 | |
| 3 | R | 2 | x5k | PL 1/2 x 12 5/8 | 3 0 1/2 | FILL | 65 | |
| | 10U12U14N | 1 | | TOP CHORD ASS'Y | | SEE NOTE "G" | 7341 | |
| | 1 | | BTC5N | TOP CHORD | | SEE DNG. 8 | 5110 | |
| 3 | M | 2 | x5g | PL 3/4 x 39 9/16 | 5 11 1/2 | M270-S0F2 (FCH) | 802 | |
| 3 | N | 2 | x5h | PL 3/4 x 13 1/4 | 7 7 1/8 | M270-S0F2 | 257 | |
| 3 | S | 2 | x5m | PL 1/8 x 14 5/8 | 2 1 1/2 | FILL | 73 | |
| 3 | T | 4 | x5n | PL 1/8 x 10 | 2 1 | FILL | 40 | |
| 3 | Q | 4 | x5p | PL 3/4 x 12 7/8 | 1 7 | FILL | 52 | |
| | 10U12U14S | 1 | | TOP CHORD ASS'Y | | SEE NOTE "G" | 7341 | |
| | 1 | | BTC5S | TOP CHORD | | SEE DNG. 8 | 5110 | |
| 3 | M | 2 | x5g | PL 3/4 x 39 9/16 | 5 11 1/2 | M270-S0F2 (FCH) | 802 | |
| 3 | N | 2 | x5h | PL 3/4 x 13 1/4 | 7 7 1/8 | M270-S0F2 | 257 | |
| 3 | S | 2 | x5m | PL 1/8 x 14 5/8 | 2 1 1/2 | FILL | 73 | |
| 3 | T | 4 | x5n | PL 1/8 x 10 | 2 1 | FILL | 40 | |
| 3 | Q | 4 | x5p | PL 3/4 x 12 7/8 | 1 7 | FILL | 52 | |

| REV. | DATE | REMARKS | DWN | CHK | APVL | SHOP |
|---|------|------------------------|----------|---|-------------|------|
| 0 | | | | | | |
| MATERIAL: | | SURFACE PREP. & PAINT: | HOLES: | | SHOP BOLTS: | |
| M270-S0 (UN) | | SEE DNG. GNI | 15 16 | | NONE | |
| DESCRIPTION: TOP CHORD ASSEMBLIES (SPAN 2) | | | | | | |
| | | | | CASCO BAY STEEL STRUCTURES, INC. 1 WALLACE AVE. PHONE (207) 780-6722 SOUTH PORTLAND, ME 04106 FAX (207) 780-6726 | | |
| STRUCTURE: TH-10 OVER OTTER CREEK PONY TRUSS BRIDGE | | | | DRAWN: | DATE: | |
| | | | | RB | 12/18/15 | |
| | | | | CHKD: | DATE: | |
| | | | | WJL | 1/15/16 | |
| LOCATION: RUTLAND CITY, VERMONT | | | | JOB NO. | DNG NO. | |
| PROJ NO. BRF 3000 (19) | | | | 598 | 10 | |
| CUSTOMER: KUBRICKY CONSTRUCTION CORP. | | | | | REV. | |

- NOTES:
- FOR GENERAL NOTES SEE DNG. GNI.
 - FOR STANDARD DETAILS SEE DNG. X4 & X5.
 - FOR SUB-ASSEMBLY DETAILS SEE DNG. 8.
 - BTS DENOTES BOLT TO SHIP OR SECURE FOR SHIPMENT.