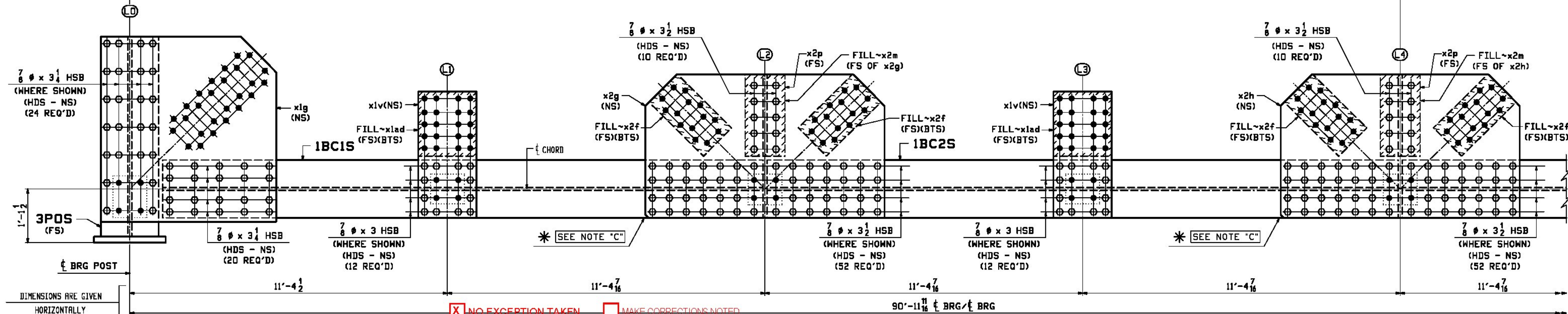


SECTION A-A (NORTH SIDE ELEVATION)
(LOOKING NORTH)



SECTION B-B (SOUTH SIDE ELEVATION)
(LOOKING NORTH)

NO EXCEPTION TAKEN MAKE CORRECTIONS NOTED
 REJECTED REVISE AND RESUBMIT
 SUBMIT SPECIFIED ITEM

CHECKING IS ONLY FOR THE GENERAL CONFORMANCE WITH THE DESIGN CONCEPT OF THE PROJECT AND GENERAL COMPLIANCE WITH THE INFORMATION GIVEN IN THE CONTRACT DOCUMENTS. ANY ACTION SHOWN IS SUBJECT TO THE REQUIREMENTS OF THE PLANS AND SPECIFICATIONS. CONTRACTOR IS RESPONSIBLE FOR DIMENSIONS WHICH SHALL BE CONFIRMED AND CORRELATED AT THE JOB SITE. FABRICATION PROCESSES AND TECHNIQUES OF CONSTRUCTION, COORDINATION OF HIS WORK WITH THAT OF ALL OTHER TRADES AND THE SATISFACTORY PERFORMANCE OF THE WORK.

NOTES:
 1. FOR GENERAL NOTES SEE DWG. GNI.
 2. FOR SUB-ASSEMBLY DETAILS SEE DWG. X1 & X2.
 3. FOR SUB-ASSEMBLY DETAILS SEE DWG. 1 & 3.
 4. NOTES BOLT TO SHIP OR SECURE FOR SHIPMENT.
 5. SHOP BOLTS SHALL BE 7/8" A325-1.
 ALL BOLTS SHALL BE WITH ONE HARDENED WASHER AND ONE DTI WASHER.
 BOLTS AND WASHERS SHALL BE MECHANICALLY GALVANIZED.

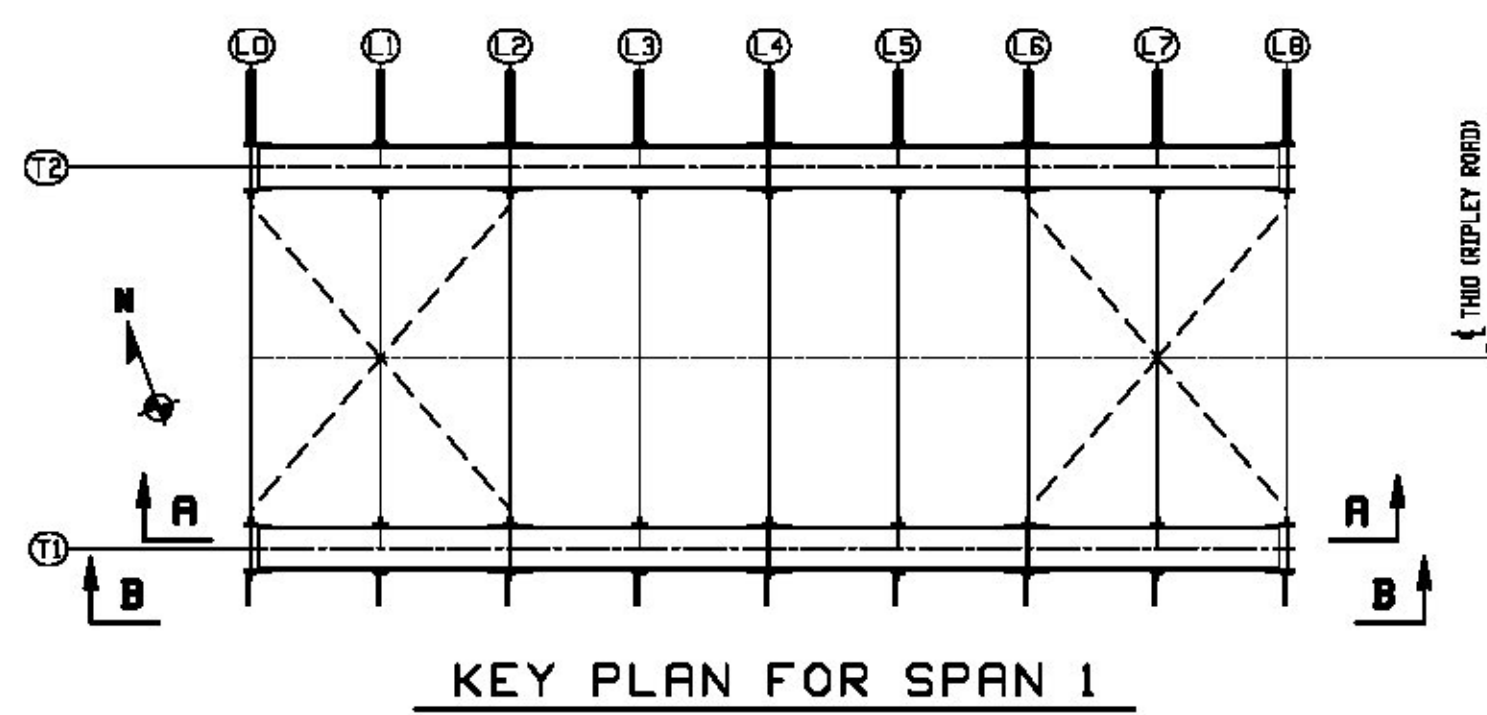
DATE 1/29/2016

ONE ~ BOTTOM CHORD ASSEMBLY ~ 5BC1S
(@ SOUTH TRUSS T1 - SPAN 1)
(FOR BLOCKING DIAGRAM SEE DWG. 5C)

Vermont Agency of Transportation
RECEIVED
 ON: March 21, 2016
 and Checked for
CONFORMANCE
 BY: ABC DATE:

* SHOP NOTE "C"
 FOR PLATE ORIENTATION PLACE CLIP TOWARDS SIDE SHOWN.

WORK THIS DWG. WITH DWG. 5BC & 5C



KEY PLAN FOR SPAN 1

REV.	DATE	REMARKS	DWN	CHK	APVL	SHOP
0						
MATERIAL:	M270-50 (UN)	SURFACE PREP. & PAINT: SEE DWG. GNI	HOLES: 15/16"			SHOP BOLTS: AS NOTED
DESCRIPTION: BOTTOM CHORD ASSEMBLY (SOUTH TRUSS - SPAN 1)						
		CASCO BAY STEEL STRUCTURES, INC. 1 WALLACE AVE. SOUTH PORTLAND, ME 04106		PHONE (207) 780-6722 FAX (207) 780-6726		
STRUCTURE: TH-10 OVER OTTER CREEK PONY TRUSS BRIDGE			DRAWN: RB	DATE: 12/16/15		
			CHKD: WJL	DATE: 1/14/16		
LOCATION: RUTLAND CITY, VERMONT			JOB NO. 598	DWG NO. 5AC		
PROJ NO. BRF 3000 (19)						
CUSTOMER: KUBRICKY CONSTRUCTION CORP.						