

Vermont Agency of Transportation

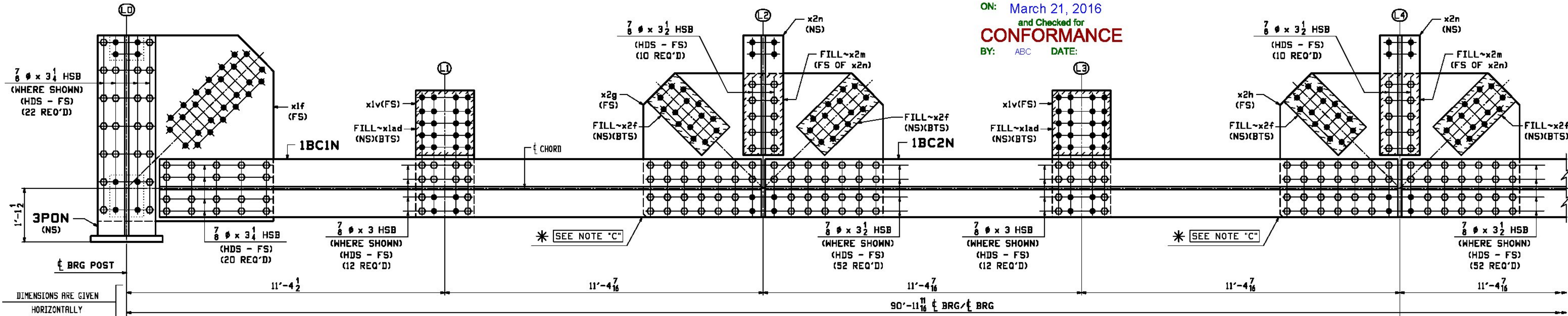
RECEIVED

ON: March 21, 2016

and Checked for

CONFORMANCE

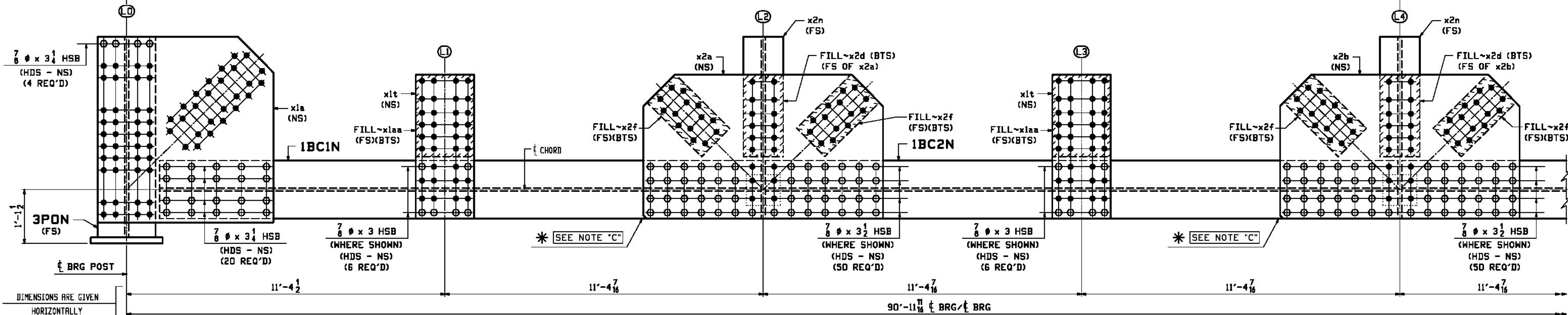
BY: ABC DATE:



SECTION A-A (NORTH SIDE ELEVATION)

(LOOKING NORTH)

MATCH LINE
(CONT. ON 4BC)



SECTION B-B (SOUTH SIDE ELEVATION)

(LOOKING NORTH)

ONE ~ BOTTOM CHORD ASSEMBLY ~ 4BC1N

(@ NORTH TRUSS T2 - SPAN 1)
(FOR BLOCKING DIAGRAM SEE DWG. 4C)

- NO EXCEPTION TAKEN
- MAKE CORRECTIONS NOTED
- REJECTED
- REVISE AND RESUBMIT
- SUBMIT SPECIFIED ITEM

CHECKING IS ONLY FOR THE GENERAL CONFORMANCE WITH THE DESIGN CONCEPT OF THE PROJECT AND GENERAL COMPLIANCE WITH THE INFORMATION GIVEN IN THE CONTRACT DOCUMENTS. ANY ACTION SHOWN IS SUBJECT TO THE REQUIREMENTS OF THE PLANS AND SPECIFICATIONS. CONTRACTOR IS RESPONSIBLE FOR DIMENSIONS WHICH SHALL BE CONFIRMED AND CORRELATED AT THE JOB SITE FABRICATION PROCESSES AND TECHNIQUES OF CONSTRUCTION. DETAIL OF HIS WORK WITH THAT OF ALL OTHERS SHALL BE SATISFACTORY PERFORMANCE OF BOLTS SHALL BE 7/8" A325-1. ALL BOLTS SHALL BE WITH ONE HARDENED WASHER AND ONE DTI WASHER. DTI WASHERS SHALL BE MECHANICALLY GALVANIZED.

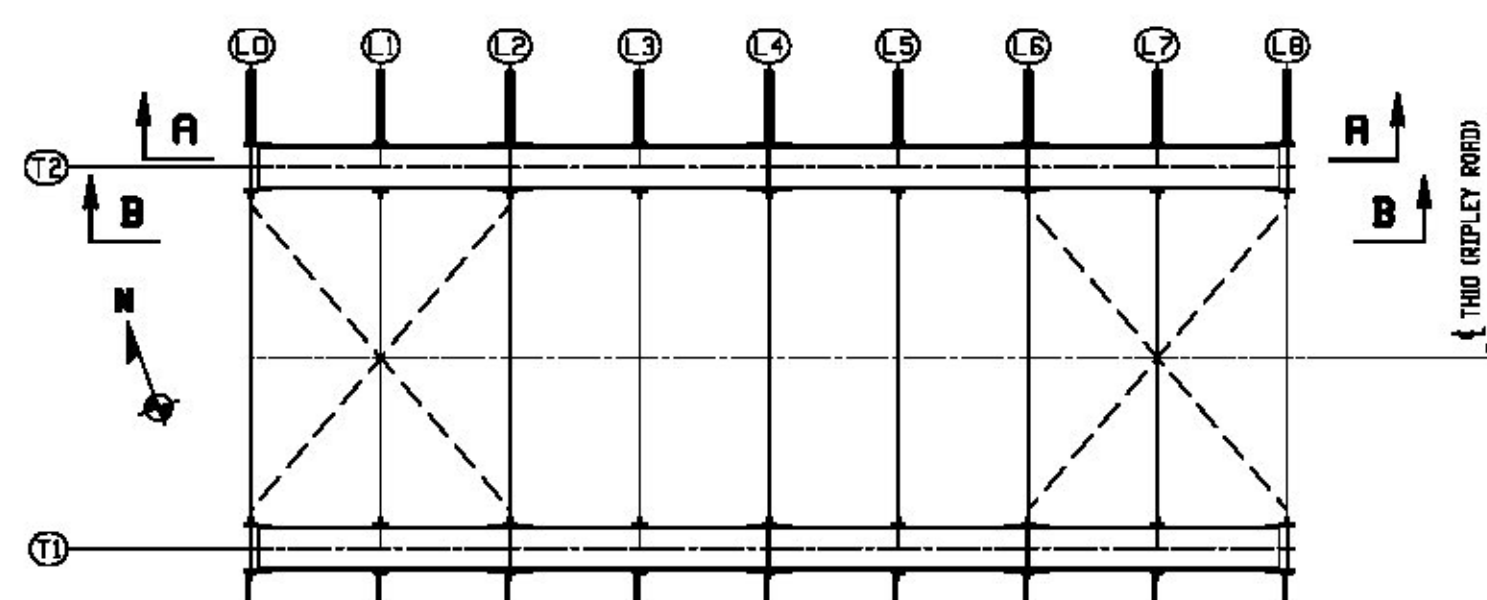


DATE 1/29/2016 BY J. Najdowski

* SHOP NOTE "C"

FOR PLATE ORIENTATION PLACE CLIP TOWARDS SIDE SHOWN.

WORK THIS DWG. WITH DWG. 4BC & 4C



KEY PLAN FOR SPAN 1

REV.	DATE	REMARKS	DWN	CHK	APVL	SHOP
0						
MATERIAL:	M270-50 (UN)	SURFACE PREP. & PAINT: SEE DWG. GNI	HOLES: 15/16"			SHOP BOLTS: AS NOTED
DESCRIPTION: BOTTOM CHORD ASSEMBLY (NORTH TRUSS - SPAN 1)						
STRUCTURE:		TH-10 OVER OTTER CREEK PONY TRUSS BRIDGE		DRAWN:	DATE:	
LOCATION:		RUTLAND CITY, VERMONT		CHKD:	DATE:	
PROJ NO.:		BRF 3000 (19)		WJL	1/13/16	
CUSTOMER:		KUBRICKY CONSTRUCTION CORP.		JOB NO.:	DWG NO.:	
				598	4AC	REV. 1

CASCO BAY STEEL STRUCTURES, INC.
1 WALLACE AVE. PHONE (207) 780-6722
SOUTH PORTLAND, ME 04106 FAX (207) 780-6726

TEMPOR 3885