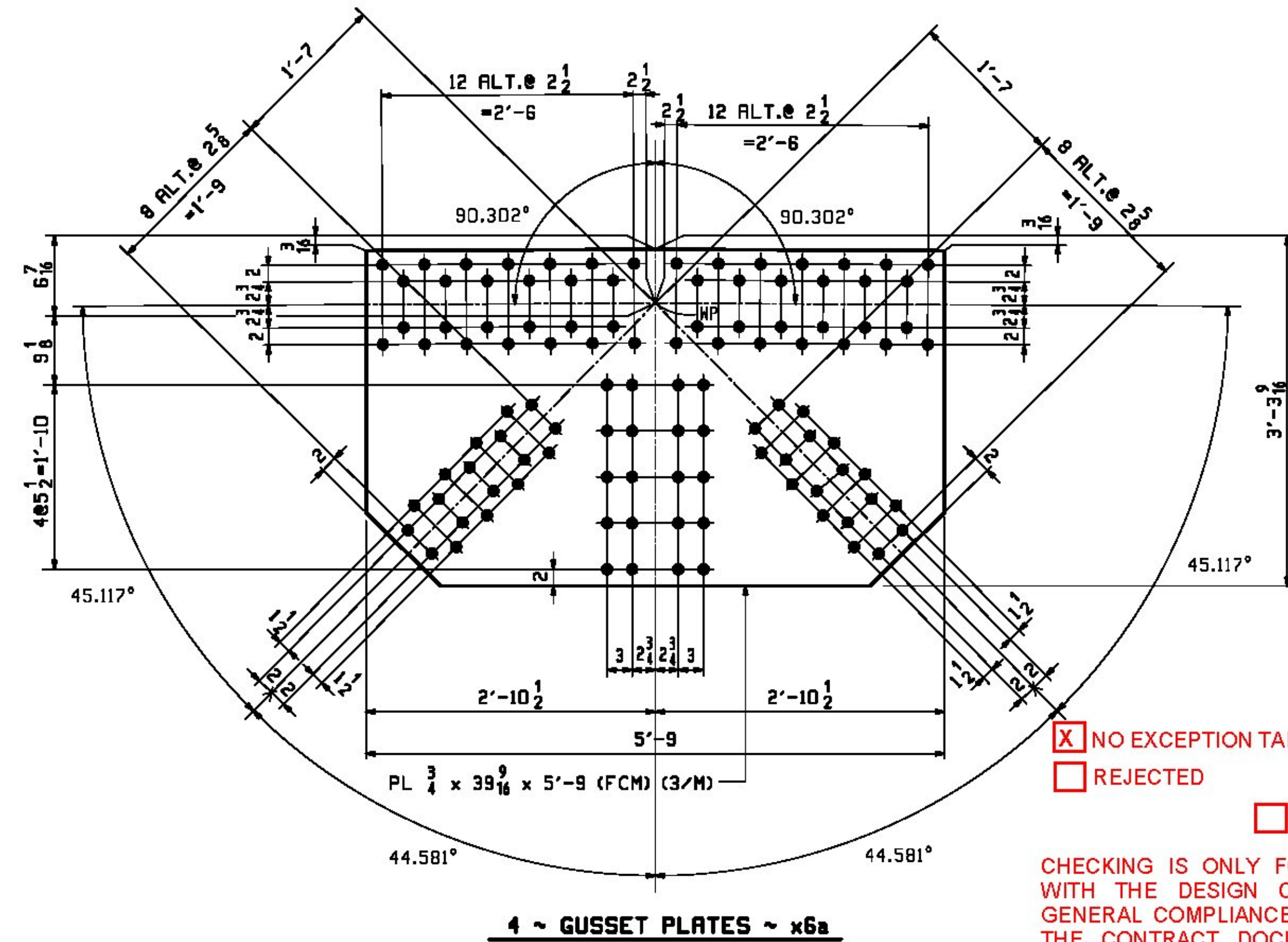


TRUSS STANDARDS



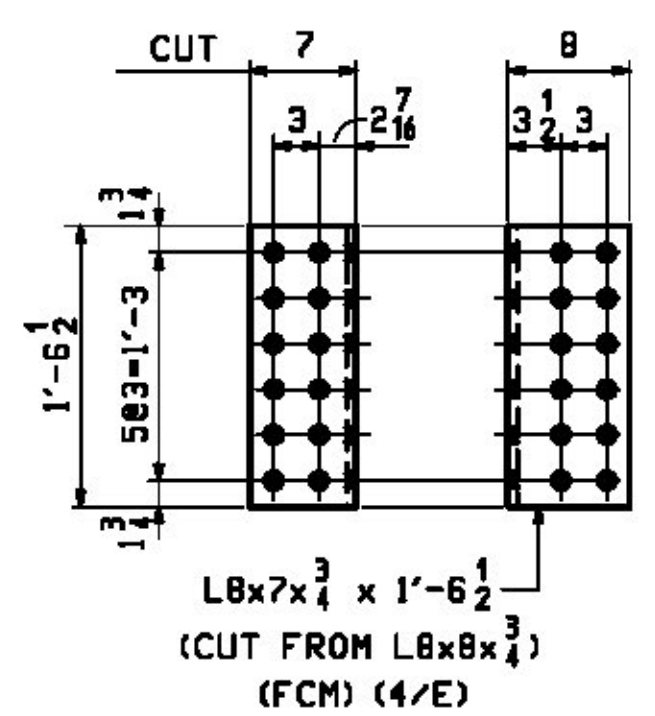
- NO EXCEPTION TAKEN
- MAKE CORRECTIONS NOTED
- REJECTED
- REVISE AND RESUBMIT
- SUBMIT SPECIFIED ITEM

CHECKING IS ONLY FOR THE GENERAL CONFORMANCE WITH THE DESIGN CONCEPT OF THE PROJECT AND GENERAL COMPLIANCE WITH THE INFORMATION GIVEN IN THE CONTRACT DOCUMENTS. ANY ACTION SHOWN IS SUBJECT TO THE REQUIREMENTS OF THE PLANS AND SPECIFICATIONS. CONTRACTOR IS RESPONSIBLE FOR DIMENSIONS WHICH SHALL BE CONFIRMED AND CORRELATED AT THE JOB SITE; FABRICATION PROCESSES AND TECHNIQUES OF CONSTRUCTION; COORDINATION OF HIS WORK WITH THAT OF ALL OTHER TRADES AND THE SATISFACTORY PERFORMANCE OF THE WORK.

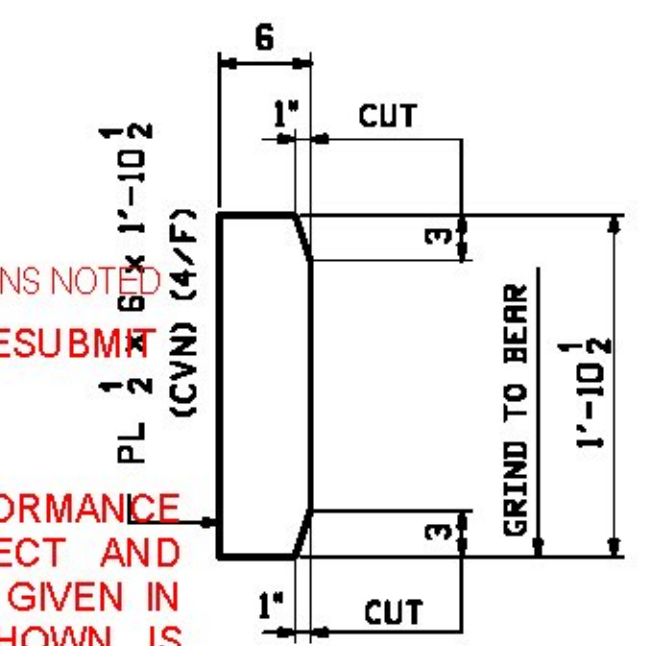
CHA

DATE: 1/29/2016 BY: J. Najdowski

FLOORBEAM STANDARDS



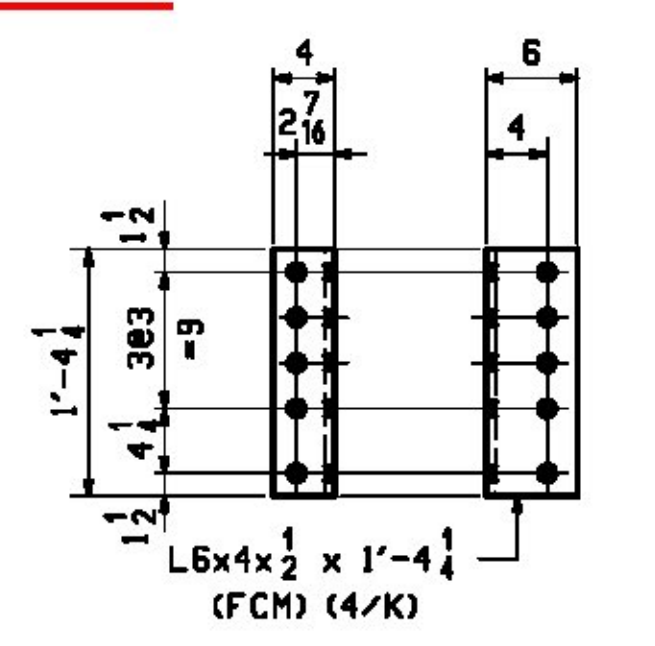
16 ~ ANGLES ~ x6d
(END FLBM CONN @ L2, L3, L4, L5 & L19)



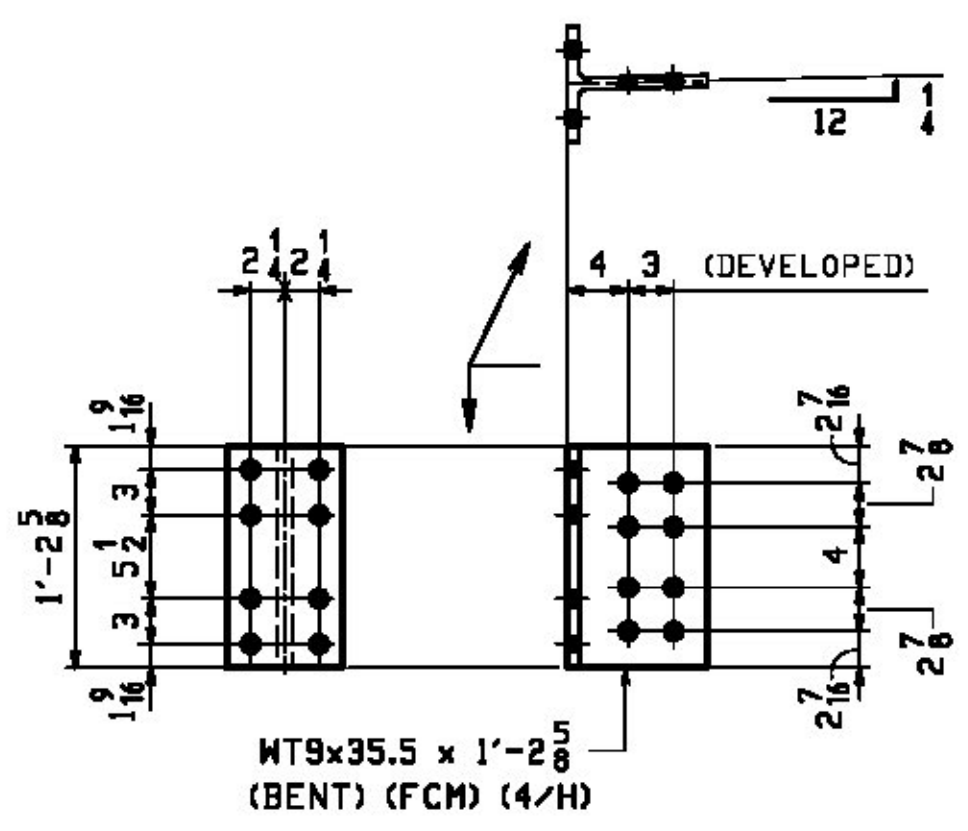
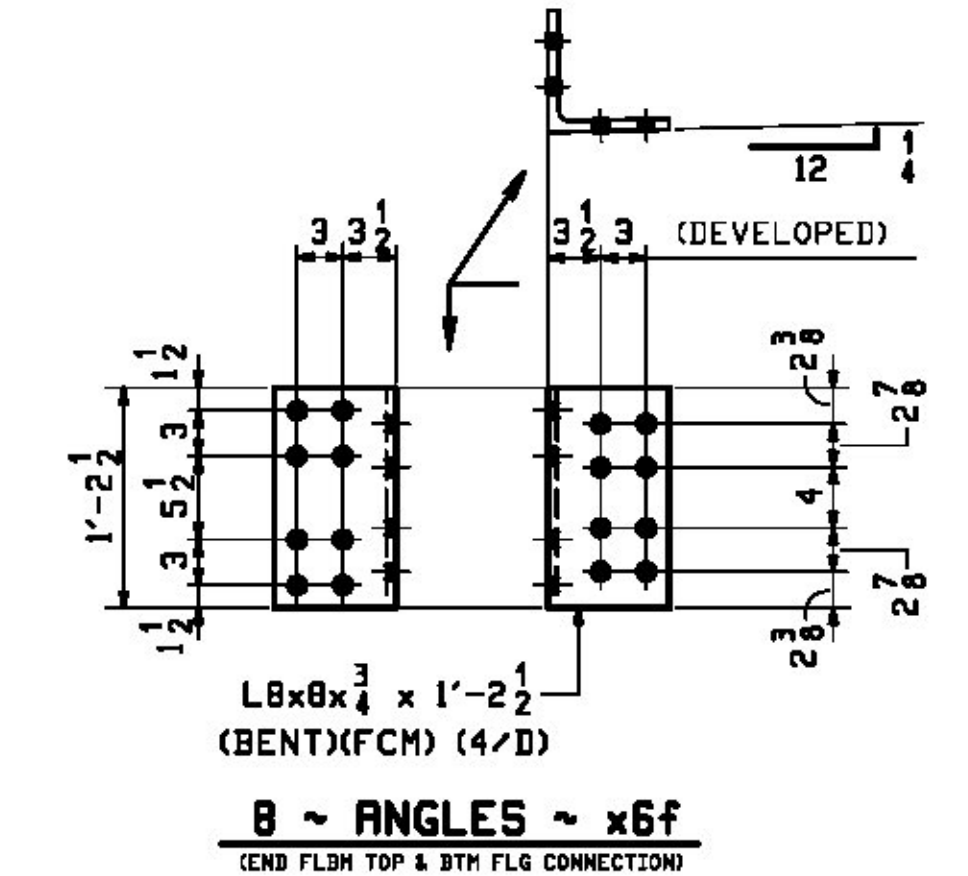
16 ~ STIFFENERS ~ x6h
(INTERM. FLBM TOP & BTH FLG CONNECTION @ L1, L3, L5, L7, L10, L12, L14, L16 & L18)

SHOP NOTE:

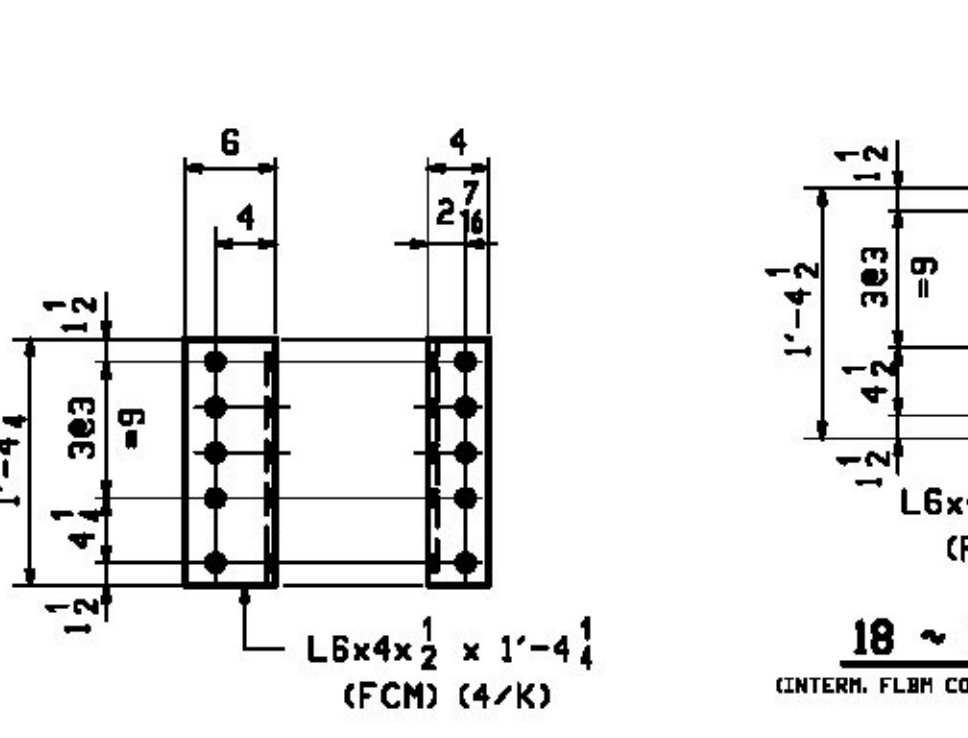
STIFFENERS x6h SHALL BE GALVANIZED WITH FLOORBEAMS AFTER WELDING.
(SEE DRAWINGS 16 & 17)



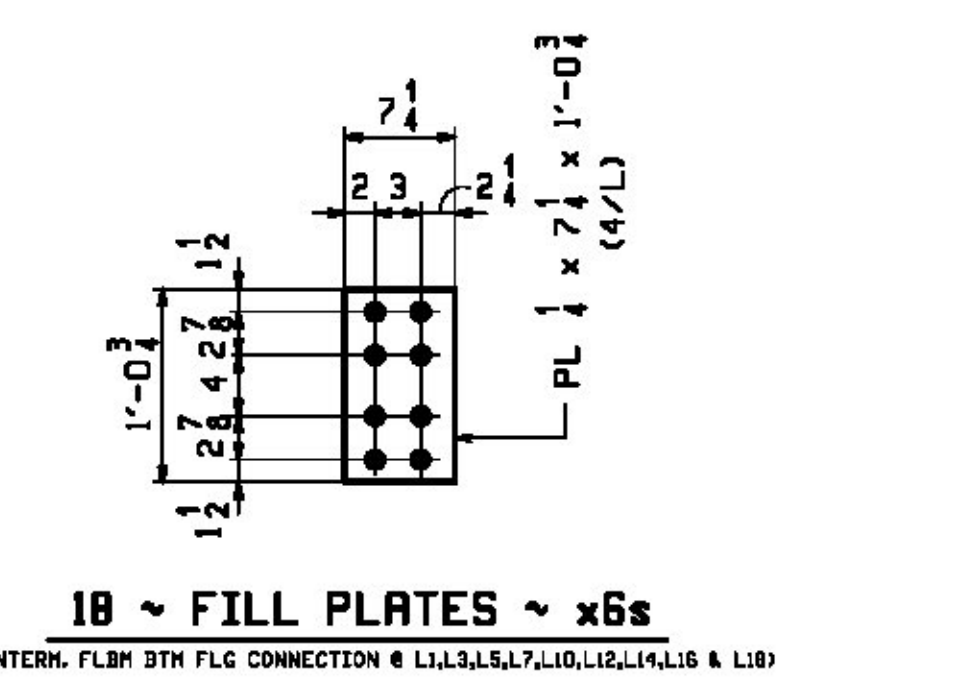
14 ~ ANGLES ~ x6p
(INTERM. FLBM CONN @ L2, L4, L6, L8, L11, L13, L15 & L17)



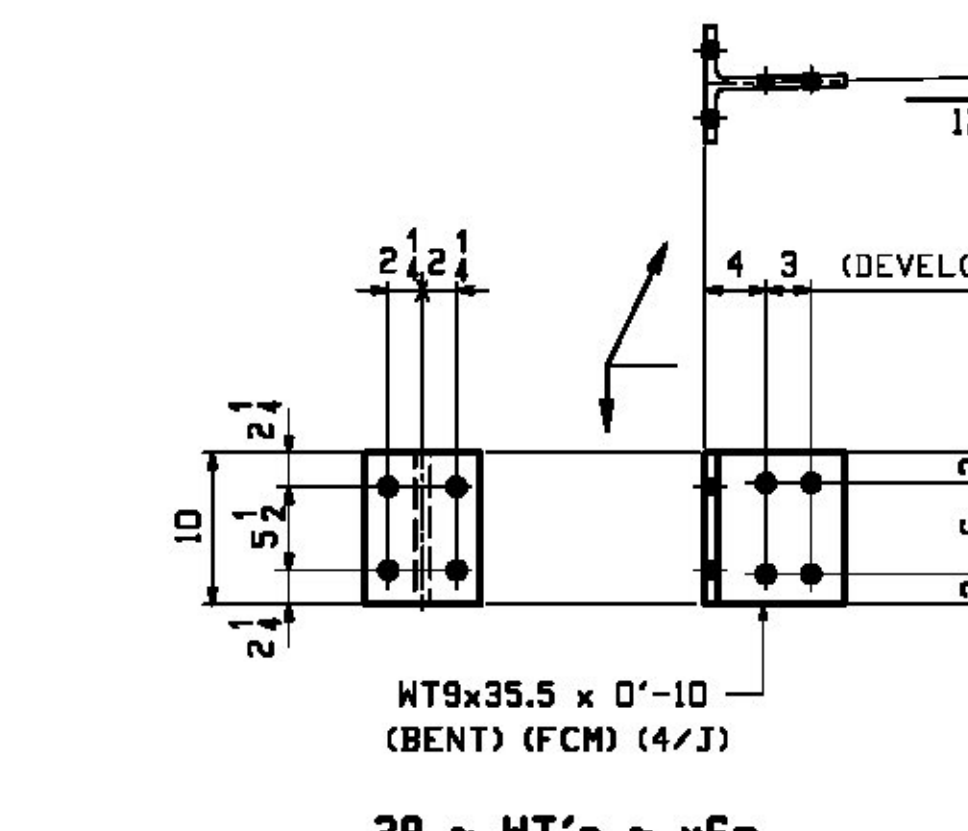
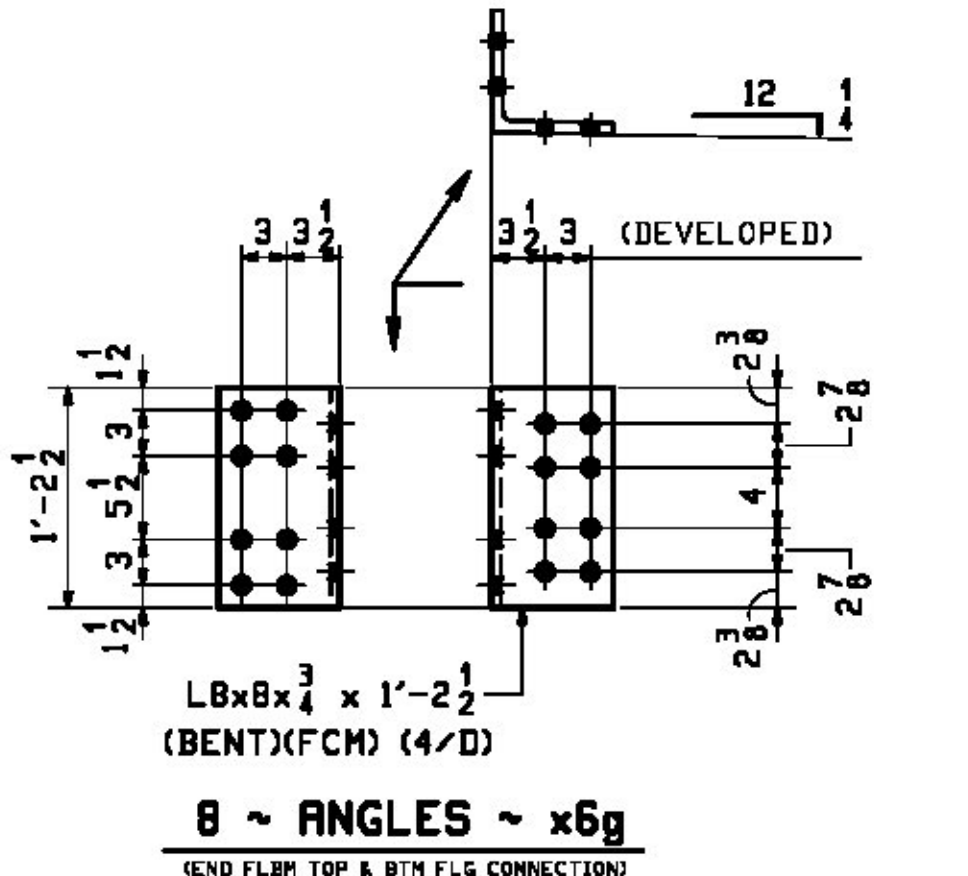
36 ~ WT's ~ x6k
(INTERM. FLBM TOP & BTH FLG CONNECTION @ L1, L3, L5, L7, L10, L12, L14, L16 & L18)



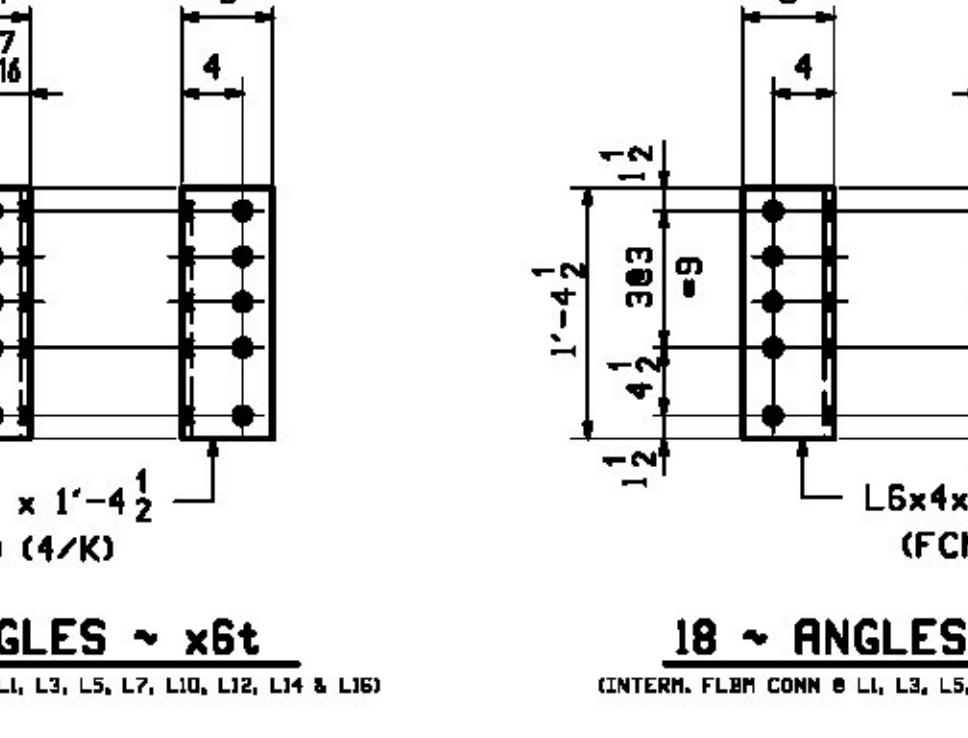
14 ~ ANGLES ~ x6p
(INTERM. FLBM CONN @ L2, L4, L6, L8, L11, L13, L15 & L17)



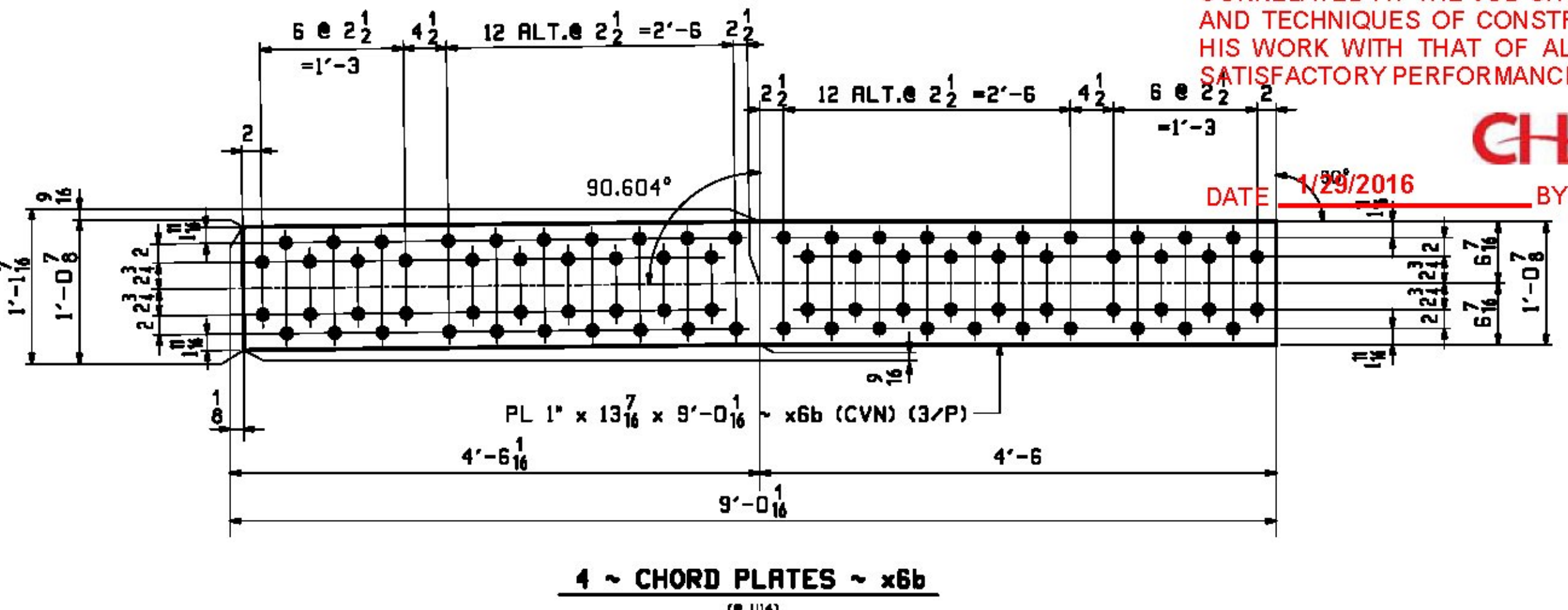
18 ~ FILL PLATES ~ x6s
(INTERM. FLBM BTH FLG CONNECTION @ L1, L3, L5, L7, L10, L12, L14, L16 & L18)



28 ~ WT's ~ x6m
(INTERM. FLBM TOP & BTH FLG CONNECTION @ L2, L4, L6, L8, L11, L13, L15 & L17)



18 ~ ANGLES ~ x6t
(INTERM. FLBM CONN @ L1, L3, L5, L7, L10, L12, L14 & L16)



4 ~ CHORD PLATES ~ x6b
(@ U14)

SHOP NOTE *G*

ALL STEEL SHALL BE HOT DIP GALVANIZED IN ACCORDANCE WITH SUBSECTION 506.15.

NOTES:

1. FOR GENERAL NOTES SEE DMG. GNI.
2. FCM - DENOTES FRACTURE CRITICAL MATERIAL.
3. CVN - DENOTES MATERIAL SUBJECT TO CHARPY V-NOTCH TESTING.

Vermont Agency of Transportation
RECEIVED
ON: March 21, 2016
and Checked for
CONFORMANCE
BY: ABC DATE:

REV.	DATE	REMARKS	DNW	CHK	APVL	SHOP
0						
MATERIAL:		SURFACE PREP. & PAINT:		HOLES:		SHOP BOLTS:
M270-50		HOT-DIP GALV.		15/16"		NONE
DESCRIPTION: TRUSS & FLOORBEAM STANDARD DETAILS						
STRUCTURE: TH-10 OVER OTTER CREEK PONY TRUSS BRIDGE			DRAWN: RB		DATE: 12/15/15	
LOCATION: RUTLAND CITY, VERMONT			CHKD: WJL		DATE: 1/13/16	
PROJ NO. BRF 3000 (19)			JOB NO. 598		DWG NO. X6	
CUSTOMER: KUBRICKY CONSTRUCTION CORP.					REV. Δ	

CASCO BAY STEEL STRUCTURES, INC.
1 WALLACE AVE. PHONE (207) 780-6722
SOUTH PORTLAND, ME 04106 FAX. (207) 780-6726

TEMPOR 3885