

- 4 ~ GUSSET PLATES ~ x4a  
(INSIDE FACE @ L13 & L15)
- 8 ~ FILL PLATES ~ x4b  
(@ L13 & L15 LOWER CHORD)
- 4 ~ FILL PLATES ~ x4c  
(@ L13 & L15 RAISED BLOCKING INSIDE GUSSET)
- 16 ~ FILL PLATES ~ x4d  
(@ L13 & L15 DIAGONALS)

NO EXCEPTION TAKEN     MAKE CORRECTIONS NOTED  
 REJECTED     REVISE AND RESUBMIT  
 SUBMIT SPECIFIED ITEM

CHECKING IS ONLY FOR THE GENERAL CONFORMANCE WITH THE DESIGN CONCEPT OF THE PROJECT AND GENERAL COMPLIANCE WITH THE INFORMATION GIVEN IN THE CONTRACT DOCUMENTS. ANY ACTION SHOWN IS SUBJECT TO THE REQUIREMENTS OF THE PLANS AND SPECIFICATIONS. CONTRACTOR IS RESPONSIBLE FOR DIMENSIONS WHICH SHALL BE CONFIRMED AND CORRELATED AT THE JOB SITE; FABRICATION PROCESSES AND TECHNIQUES OF CONSTRUCTION; COORDINATION OF HIS WORK WITH THAT OF ALL OTHER TRADES AND THE SATISFACTORY PERFORMANCE OF THE WORK.

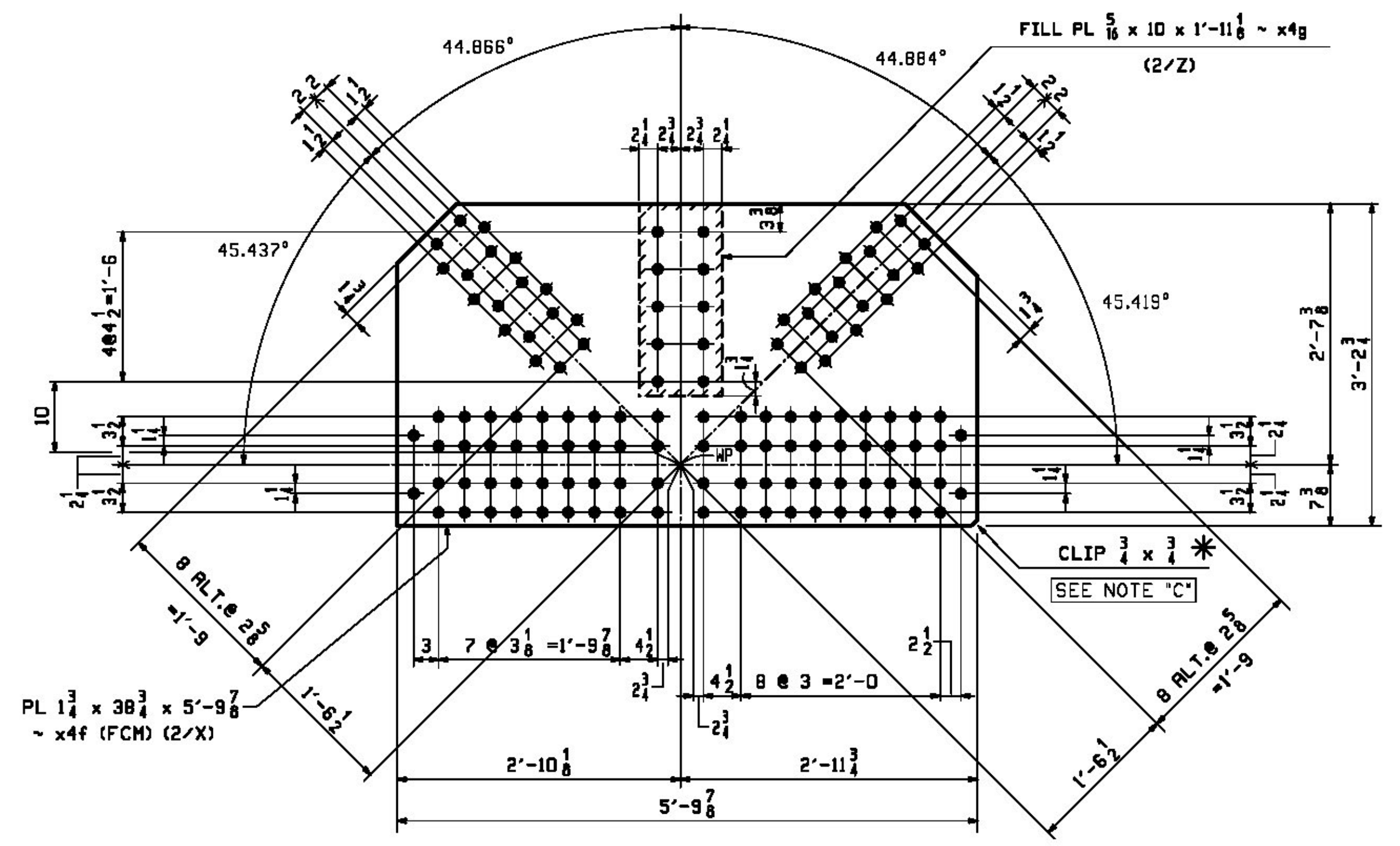


DATE 1/29/2016 BY J. Najdowski

Vermont Agency of Transportation  
**RECEIVED**  
 ON: **March 21, 2016**  
 and Checked for  
**CONFORMANCE**  
 BY: **ABC** DATE:

GUSSET PLATES  
(@ UPPER CORNER PANEL POINTS)

MARK	REQ'D	(A)	(B)	(C)	(D)	(E)	(F)	(G)	(H)	(J)	
(@ U1 & U2)	x4h	8	112.466°	45.312°	44.444°	$\frac{1}{8}$	1'-5 $\frac{5}{8}$	1'-9 $\frac{3}{4}$	1'-10	2'-0 $\frac{9}{16}$	4'-9 $\frac{7}{16}$
(@ U10 & U10B)	x4k	8	112.808°	44.638°	45.108°	$\frac{3}{16}$	1'-6 $\frac{3}{8}$	1'-10	1'-9 $\frac{9}{16}$	2'-0 $\frac{3}{8}$	4'-9 $\frac{1}{4}$



- 4 ~ GUSSET PLATES ~ x4f  
(OUTER FACE @ L13 & L15)
- 4 ~ FILL PLATES ~ x4g  
(@ L13 & L15 RAISED BLOCKING OUTER GUSSET)

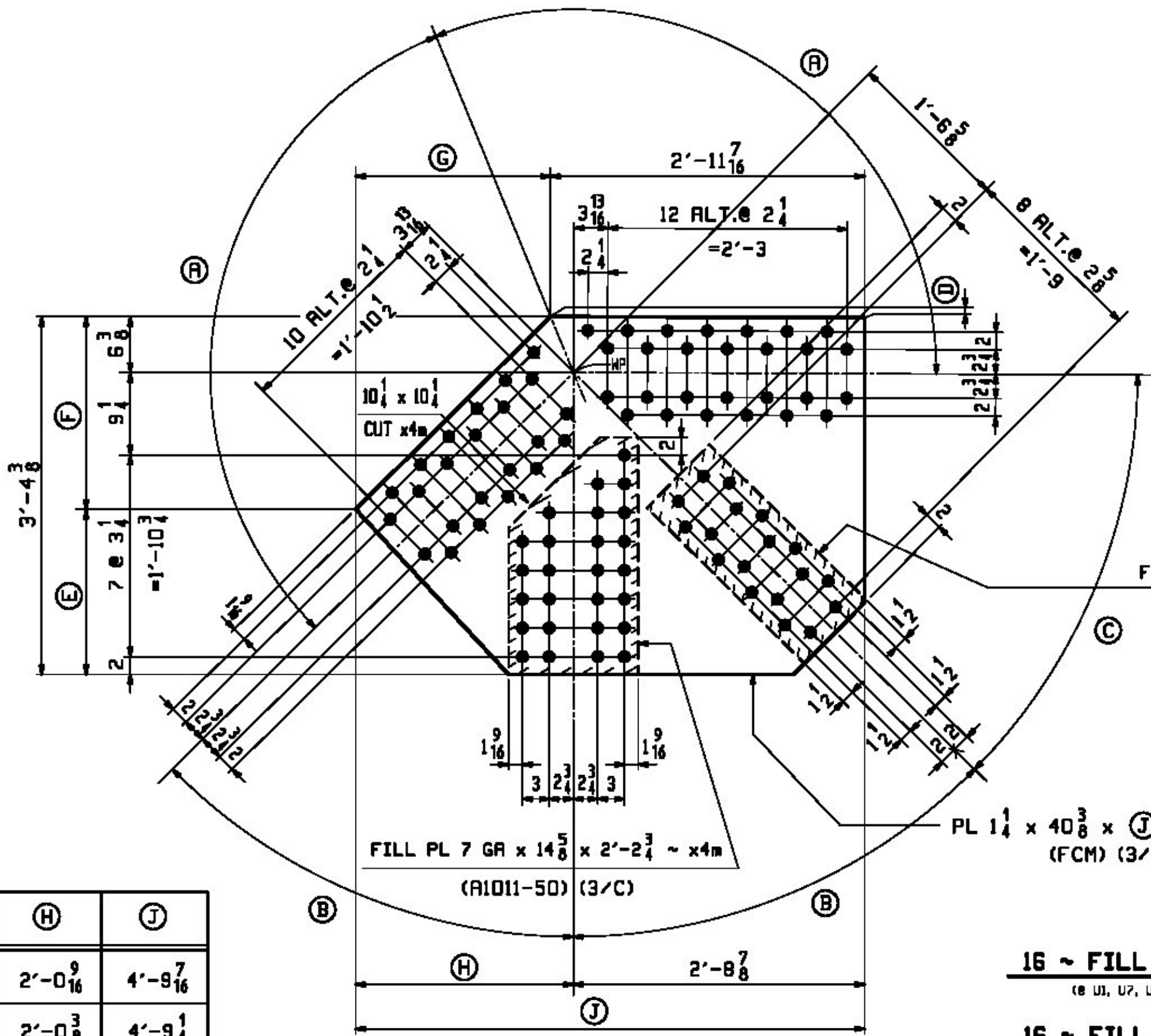
\* SHOP NOTE "C"

CLIP PLATE CORNER FOR SHOP ORIENTATION @ ASSEMBLY.

SHOP NOTE "G"

ALL STEEL SHALL BE HOT DIP GALVANIZED IN ACCORDANCE WITH SUBSECTION 506.15.

- NOTES:
- FOR GENERAL NOTES SEE DWG. GNI.
  - FCM - DENOTES FRACTURE CRITICAL MATERIAL.



- 16 ~ FILL PLATES ~ x4m  
(@ U1, U2, U10 & U10B VERTICALS)
- 16 ~ FILL PLATES ~ x4n  
(@ U1, U2, U10 & U10B DIAGONALS)

REV.	DATE	REMARKS	DWN	CHK	APVL	SHOP
0						
MATERIAL:		SURFACE PREP. & PAINT:		HOLES:		SHOP BOLTS:
M270-50 (UN)		HOT-DIP GALV.		15 16		NONE
DESCRIPTION: TRUSS STANDARD DETAILS						
<b>CASCO BAY STEEL STRUCTURES, INC.</b> 1 WALLACE AVE.    PHONE (207) 780-6722 SOUTH PORTLAND, ME 04106    FAX. (207) 780-6726						
STRUCTURE: TH-10 OVER OTTER CREEK PONY TRUSS BRIDGE				DRAWN: RB		DATE: 12/14/15
				CHKD: WJL		DATE: 1/12/16
LOCATION: RUTLAND CITY, VERMONT				JOB NO. 598		DWG NO. X4
PROJ NO. BRF 3000 (19)				CUSTOMER: KUBRICKY CONSTRUCTION CORP.		REV. <input checked="" type="checkbox"/>