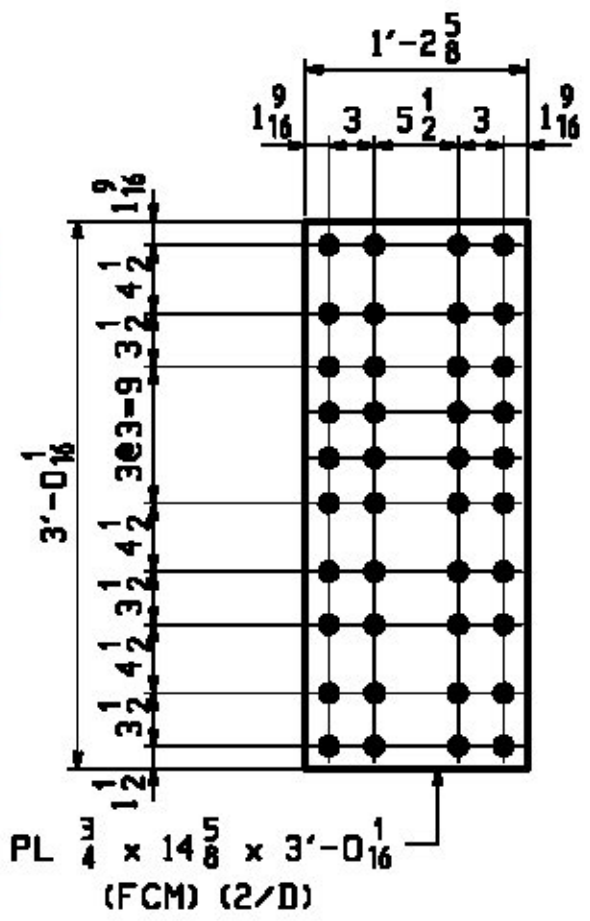
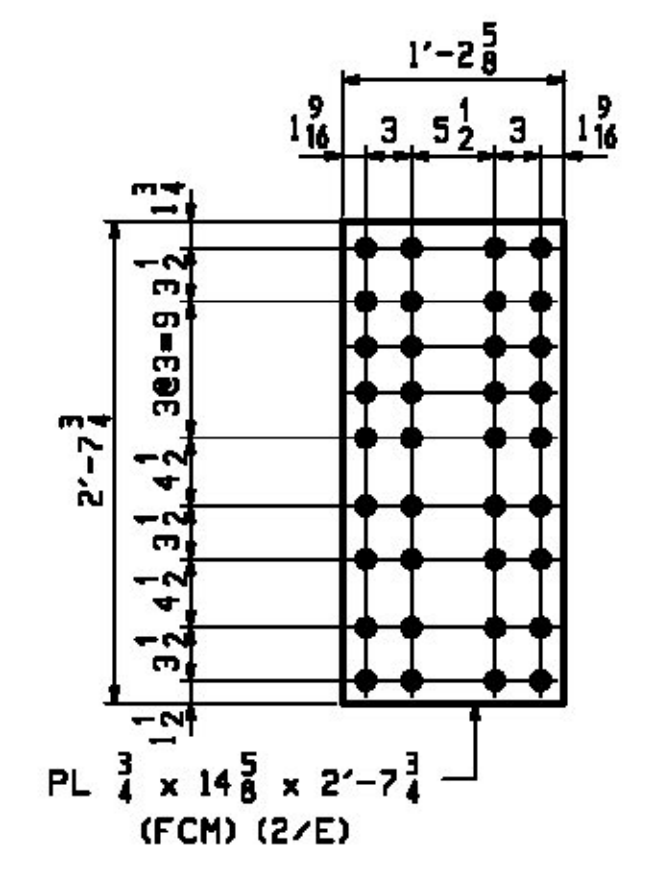


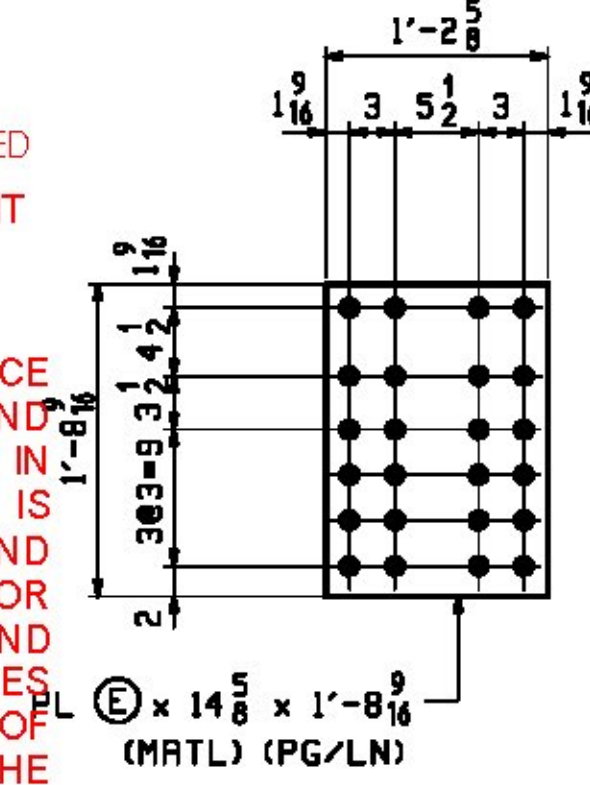
**RECEIVED**  
 ON: March 21, 2016  
 and Checked for  
**CONFORMANCE**  
 BY: ABC DATE:



**18 ~ GUSSET PLATES ~ xlt**  
 (INSIDE FACE @ L1, L3, L5, L7, L10, L12, L14, L16 & L18)

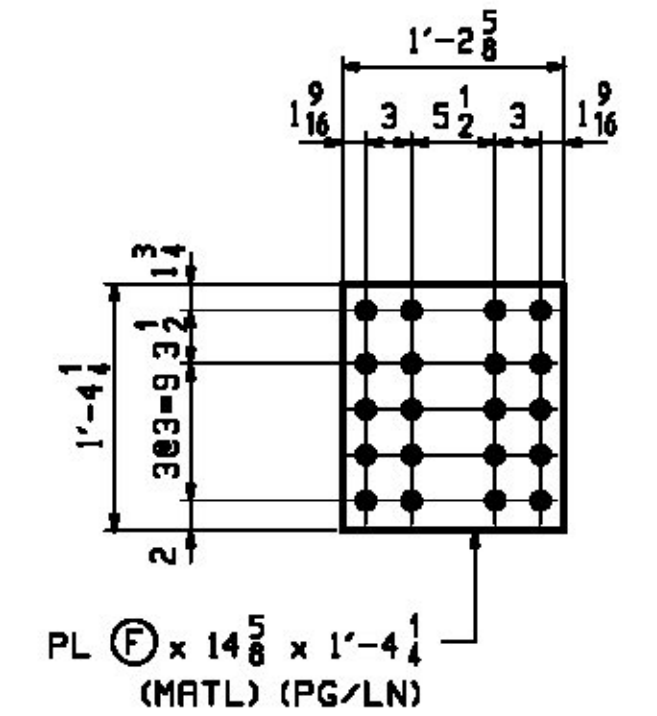


**18 ~ GUSSET PLATES ~ xlv**  
 (OUTER FACE @ L1, L3, L5, L7, L10, L12, L14, L16 & L18)



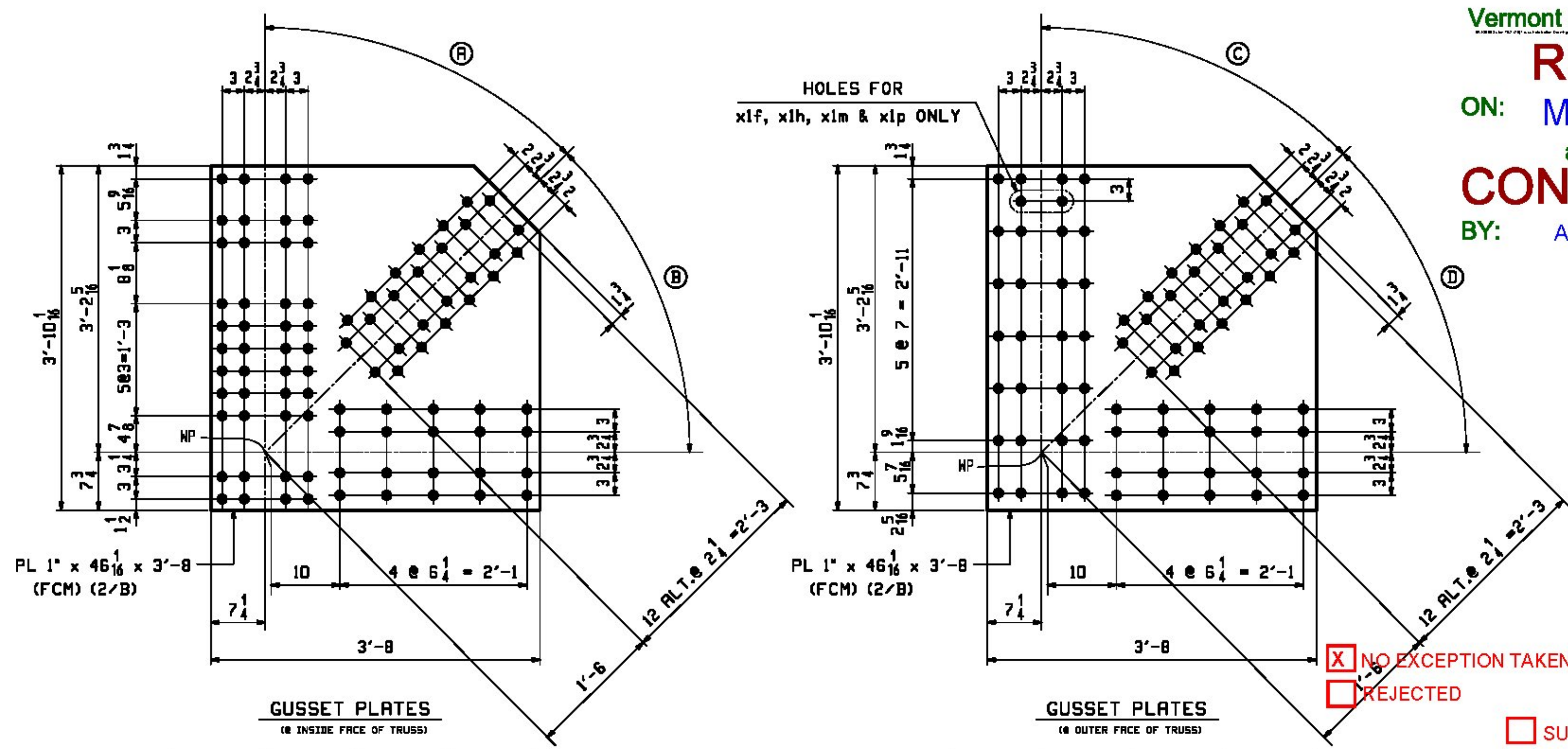
**FILL PLATES**  
 (INSIDE FACE GUSSET PLATE)

MARK	REQ'D	Ⓔ	MATL	PG/LN	
(@ L1, L3, L5) (@ L7, L10, L18)	<b>xlaa</b>	12	7 GA	A1011-50	2/F
(@ L12, L16)	<b>xlab</b>	4	1/4	M270-50	2/H
(@ L14)	<b>xlac</b>	2	7/16	M270-50	2/K



**FILL PLATES**  
 (OUTER FACE GUSSET PLATE)

MARK	REQ'D	Ⓕ	MATL	PG/LN	
(@ L1, L3, L5) (@ L7, L10, L18)	<b>xlad</b>	12	7 GA	A1011-50	2/G
(@ L12, L16)	<b>xlaf</b>	4	1/4	M270-50	2/J
(@ L14)	<b>xlag</b>	2	7/16	M270-50	2/L



**GUSSET PLATES**  
 (INSIDE FACE OF TRUSS)

MARK	REQ'D	Ⓐ	Ⓑ	
(@ L.D.)	<b>xla</b>	2	43.702°	44.688°
(@ L.B.)	<b>xlb</b>	2	45.282°	44.688°
(@ L.S.)	<b>xlc</b>	2	44.800°	45.362°
(@ L10)	<b>xld</b>	2	42.152°	45.362°

**GUSSET PLATES**  
 (OUTER FACE OF TRUSS)

MARK	REQ'D	Ⓒ	Ⓓ	
(@ L.D - T2) (NORTH TRUSS)	<b>xlf</b>	1	43.702°	44.688°
(@ L.D - T1) (SOUTH TRUSS)	<b>xlg</b>	1	43.702°	44.688°
(@ L.B - T2) (NORTH TRUSS)	<b>xlh</b>	1	45.282°	44.688°
(@ L.B - T1) (SOUTH TRUSS)	<b>xli</b>	1	45.282°	44.688°
(@ L.S - T2) (NORTH TRUSS)	<b>xlm</b>	1	44.800°	45.362°
(@ L.S - T1) (SOUTH TRUSS)	<b>xln</b>	1	44.800°	45.362°
(@ L10 - T2) (NORTH TRUSS)	<b>xlp</b>	1	42.152°	45.362°
(@ L10 - T1) (SOUTH TRUSS)	<b>xls</b>	1	42.152°	45.362°

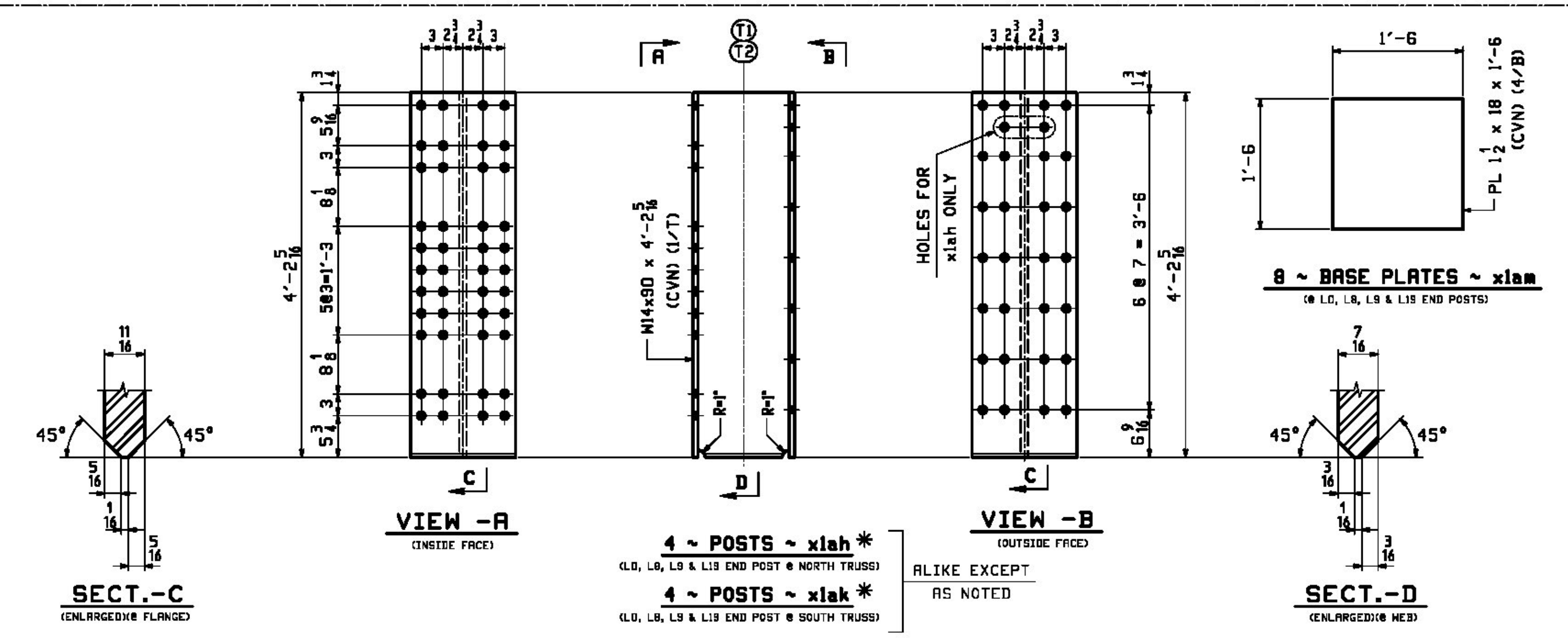
NO EXCEPTION TAKEN  
 REJECTED  
 MAKE CORRECTIONS NOTED  
 REVISE AND RESUBMIT  
 SUBMIT SPECIFIED ITEM

DATE 1/29/2016 BY J. Najdowski



DATE 1/29/2016 BY J. Najdowski

DATE 1/29/2016 BY J. Najdowski



**8 ~ BASE PLATES ~ xlam**  
 (@ L.D, L.B, L.S & L10 END POSTS)

**4 ~ POSTS ~ xlah \***  
 (L.D, L.B, L.S & L10 END POST @ NORTH TRUSS)  
**4 ~ POSTS ~ xlak \***  
 (L.D, L.B, L.S & L10 END POST @ SOUTH TRUSS)

ALIKE EXCEPT AS NOTED

**SHOP NOTE:**

\* POSTS xlah, xlak & PLATE xlam SHALL BE GALVANIZED AFTER WELDING POST ASSEMBLIES. (SEE DRAWING 3)

**SHOP NOTE "G"**

ALL STEEL SHALL BE HOT DIP GALVANIZED IN ACCORDANCE WITH SUBSECTION 506.15 - EXCEPT FOR xlah, xlak & xlam. \*

**NOTES:**

- FOR GENERAL NOTES SEE DWG. GNI.
- FCM - DENOTES FRACTURE CRITICAL MATERIAL.
- CVN - DENOTES MATERIAL SUBJECT TO CHARPY V-NOTCH TESTING.

REV.	DATE	REMARKS	DWN	CHK	APVL	SHOP
0						
MATERIAL:		SURFACE PREP. & PAINT:	HOLES:		SHOP BOLTS:	
M270-50 (UN)		HOT-DIP GALV.	5/16"		NONE	
<b>DESCRIPTION: TRUSS STANDARD DETAILS</b>						
CASCO BAY STEEL STRUCTURES, INC. 1 WALLACE AVE. SOUTH PORTLAND, ME 04106 PHONE (207) 780-6722 FAX. (207) 780-6726		DRAWN: RB DATE: 12/11/15 CHECKED: WJL DATE: 1/12/16				
STRUCTURE: TH-10 OVER OTTER CREEK PONY TRUSS BRIDGE			JOB NO. 598		DWG NO. X1	
LOCATION: RUTLAND CITY, VERMONT			CUSTOMER: KUBRICKY CONSTRUCTION CORP.		REV. Δ	