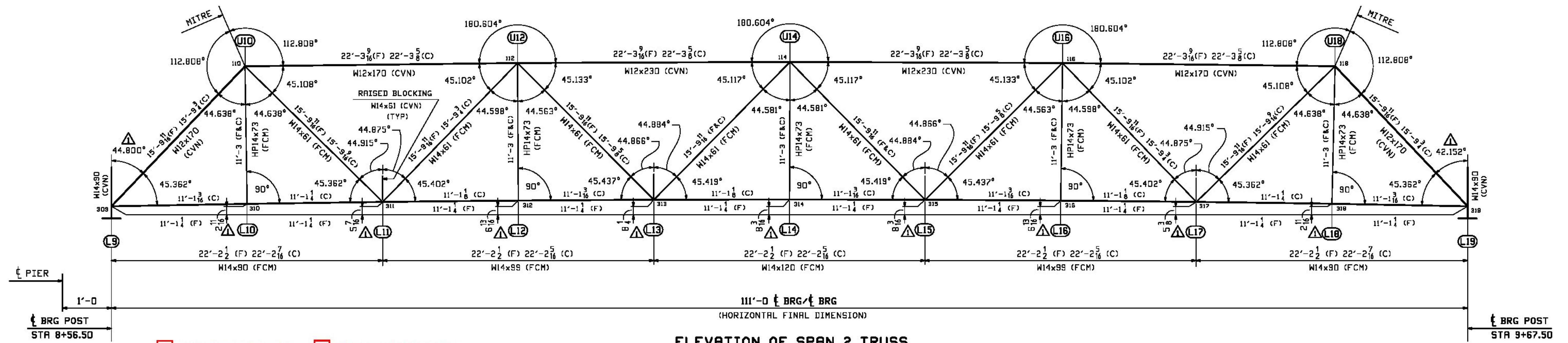


ELEVATION OF SPAN 1 TRUSS

(TRUSS T2 POINTS = T1 POINTS + 100)

(SOUTH TRUSS T1 SHOWN)

(ANGLES & DIMENSIONS FOR NORTH TRUSS T2 ARE THE SAME)



ELEVATION OF SPAN 2 TRUSS

(TRUSS T2 POINTS = T1 POINTS + 100)

(SOUTH TRUSS T1 SHOWN)

(ANGLES & DIMENSIONS FOR NORTH TRUSS T2 ARE THE SAME)

- NO EXCEPTION TAKEN
- MAKE CORRECTIONS NOTED
- REJECTED
- REVISE AND RESUBMIT
- SUBMIT SPECIFIED ITEM

CHECKING IS ONLY FOR THE GENERAL CONFORMANCE WITH THE DESIGN CONCEPT OF THE PROJECT AND GENERAL COMPLIANCE WITH THE INFORMATION GIVEN IN THE CONTRACT DOCUMENTS. ANY ACTION SHOWN IS SUBJECT TO THE REQUIREMENTS OF THE PLANS AND SPECIFICATIONS. CONTRACTOR IS RESPONSIBLE FOR DIMENSIONS WHICH SHALL BE CONFIRMED AND CORRELATED AT THE JOB SITE; FABRICATION PROCESSES AND TECHNIQUES OF CONSTRUCTION; COORDINATION OF HIS WORK WITH THAT OF ALL OTHER TRADES AND THE SATISFACTORY PERFORMANCE OF THE WORK.



DATE 1/29/2016 BY J. Najdowski

Vermont Agency of Transportation

RECEIVED

ON: **March 21, 2016**

and Checked for

CONFORMANCE

BY: **ABC** DATE:

**** NOTE ****
THE PURPOSE OF THIS DRAWING IS TO COORDINATE GEOMETRIC CONTROL INFORMATION. THIS DWG IS SUBMITTED FOR INFORMATION ONLY AND IS NOT INTENDED FOR SHOP FABRICATION.

NOTES:

- TRUSS DETAILS SHALL BE BASED ON CAMBERED GEOMETRIC ANGLES AND CAMBERED LENGTHS. CAMBERED LENGTHS ARE NOTED (C), FINAL LENGTHS (F). FINAL LENGTHS ARE SHOWN FOR REFERENCE ONLY, AND SHOULD NOT BE USED FOR DETAILING.
- ALL TRUSS MEMBER MATERIAL SHALL BE M270-50 W/ FCM & CVN AS NOTED. FRACTURE CRITICAL MEMBERS ARE NOTED (FCM). CHARPY MEMBERS ARE NOTED (CVN).
- WORK THIS DWG. WITH DWG. WS2 & WS3.

1/6/16	REVISED DIMENSIONS & ANGLES	RB	WL		
REV. DATE	REMARKS	DWN	CHK	APVL	SHOP
MATERIAL:	SURFACE PREP. & PAINT:	HOLES:	SHOP BOLTS:		
DESCRIPTION: TRUSS ELEVATION					
		CASCO BAY STEEL STRUCTURES, INC. 1 WALLACE AVE. PHONE (207) 780-6722 SOUTH PORTLAND, ME 04106 FAX. (207) 780-6726			
STRUCTURE:	TH-10 OVER OTTER CREEK PONY TRUSS BRIDGE	DRAWN:	DATE:		
		RB	9/25/15		
		CHKD:	DATE:		
		WL	9/29/15		
LOCATION:	RUTLAND CITY, VERMONT	JOB NO.	DWG NO.		
PROJ NO.	BRF 3000 (19)	598	WS1		
CUSTOMER:	KUBRICKY CONSTRUCTION CORP.		REV.		