

ALL FENCE ITEMS  
SEE ROADWAY LAYOUTS

ELECTRICAL CONDUIT  
SEE UTILITY PLANS

SPECIAL PROVISION (C-900 PVC,  
ALL-INCLUSIVE) (12" SEWER OVERFLOW)  
500+92.5 TO 501+29.4 LT (OVERFLOW)

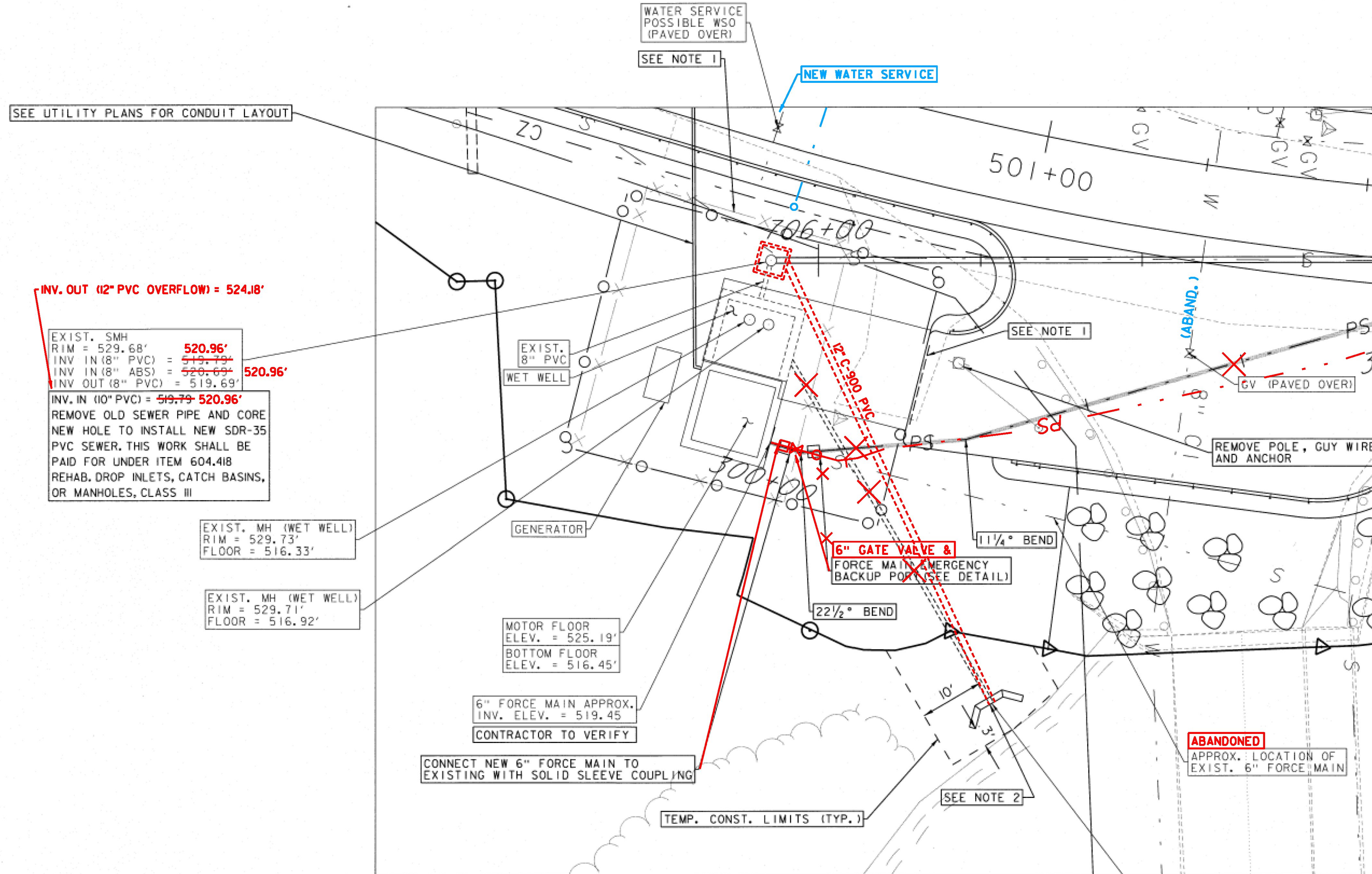
SPECIAL PROVISION (FLAPPER VALVE AND HEADWALL)  
500+92.5 LT

SPECIAL PROVISION (EMERGENCY BACKUP PORT)  
501+23.3 LT

GATE VALVE WITH VALVE BOX  
501+23.3 LT (6") (2) (FOR EMERGENCY BACKUP PORT)

REHAB. DROP INLETS, CATCH BASINS,  
OR MANHOLES, CLASS III  
501+36.1 LT

SPECIAL PROVISION (TRANSITE PIPE REMOVAL)  
500+92.5 TO 501+29.4 LT



INV. OUT (12" PVC OVERFLOW) = 524.18'

EXIST. SMH  
RIM = 529.68' = 520.96'  
INV IN (8" PVC) = 519.79'  
INV IN (8" ABS) = 520.69' = 520.96'  
INV OUT (8" PVC) = 519.69'

INV. IN (10" PVC) = 519.79' - 520.96'

REMOVE OLD SEWER PIPE AND CORE  
NEW HOLE TO INSTALL NEW SDR-35  
PVC SEWER. THIS WORK SHALL BE  
PAID FOR UNDER ITEM 604.418  
REHAB. DROP INLETS, CATCH BASINS,  
OR MANHOLES, CLASS III

EXIST. MH (WET WELL)  
RIM = 529.73'  
FLOOR = 516.33'

EXIST. MH (WET WELL)  
RIM = 529.71'  
FLOOR = 516.92'

MOTOR FLOOR  
ELEV. = 525.19'

BOTTOM FLOOR  
ELEV. = 516.45'

6" FORCE MAIN APPROX.  
INV. ELEV. = 519.45'

CONTRACTOR TO VERIFY

CONNECT NEW 6" FORCE MAIN TO  
EXISTING WITH SOLID SLEEVE COUPLING

TEMP. CONST. LIMITS (TYP.)

EXIST. SEWER OVER FLOW APPROX.  
INV. = 521.44' - 521.28'

CONTRACTOR TO VERIFY

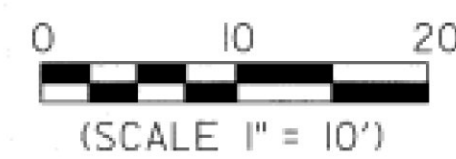
POSSIBLE TRANSITE (AC) PIPE  
PER CITY OF RUTLAND GIS MAPPING

NOTES:

- CONTRACTOR TO REMOVE ALL EXISTING FENCE AND SWING GATE. INSTALL NEW CHAIN-LINK FENCE AND NEW 16' SLIDE GATE. SEE ROADWAY LAYOUTS. SUBMIT WORKING DRAWING FOR SLIDE GATE CONFIGURATION.
- REMOVE EXISTING OVERFLOW PIPE AND CLEANOUT AND INSTALL NEW 12" C-900 PVC OVERFLOW PIPE WITH NEW FLAPPER VALVE AND HEADWALL. MATCH PROFILE. ~~CONNECT TO EXISTING PIPE WITH SOLID SLEEVE COUPLING APPROX. 2' TO 4' OUTSIDE WET WELL. SEE FLAPPER VALVE AND HEADWALL DETAIL.~~  
**NEW 12" PVC OVERFLOW PIPE WAS INSTALLED FROM A NEW CORED CONNECTION AT THE SMH STRUCTURE TO THE NEW HEAD WALL.**

④ RECORD CHANGES

**RECORD DRAWING WATER AND SEWER ELEMENTS**  
SOME OF THE CONTENT SHOWN ON THESE RECORD DRAWINGS HAS BEEN PREPARED BASED ON INFORMATION FURNISHED BY OTHERS. THE LOCATION OF ITEMS SHOWN WITHOUT LABELED DIMENSIONS SHALL BE CONSIDERED AS APPROXIMATE. MODIFICATIONS TO BRIDGE ELEMENTS ARE NOT ADDRESSED ON THESE RECORD PLANS. THE SITE WAS NOT RE-SURVEYED AFTER CONSTRUCTION, SO RECORD LOCATIONS, ELEVATIONS AND FINISH GRADES ARE APPROXIMATE AND SHALL BE CONSIDERED "SCHEMATIC." DETAILS AND CROSS SECTIONS MAY NOT REFLECT "AS-BUILT" CONDITIONS.



|                       |  |                              |                               |
|-----------------------|--|------------------------------|-------------------------------|
| WATER AND SEWER PLANS |  | PROJECT NAME: RUTLAND CITY   | PROJECT NUMBER: BRF 3000 (16) |
|                       | 540 Commercial Street, Manchester, NH 03101<br>(603) 668-8223 • Fax: (603) 668-8802<br>clde@cldeengineers.com • www.cldeengineers.com<br>Maine • New Hampshire • Vermont | FILE NAME: z94j092bdrswr.dgn | PLOT DATE: 6/17/2014          |
|                       |  | PROJECT LEADER: C. BEAN      | DRAWN BY: W. GORDON           |
|                       |  | DESIGNED BY: D. LEWIS        | CHECKED BY: S. REICHERT       |
|                       |  | DORR DRIVE PUMP STATION PLAN | SHEET 14 OF 22                |