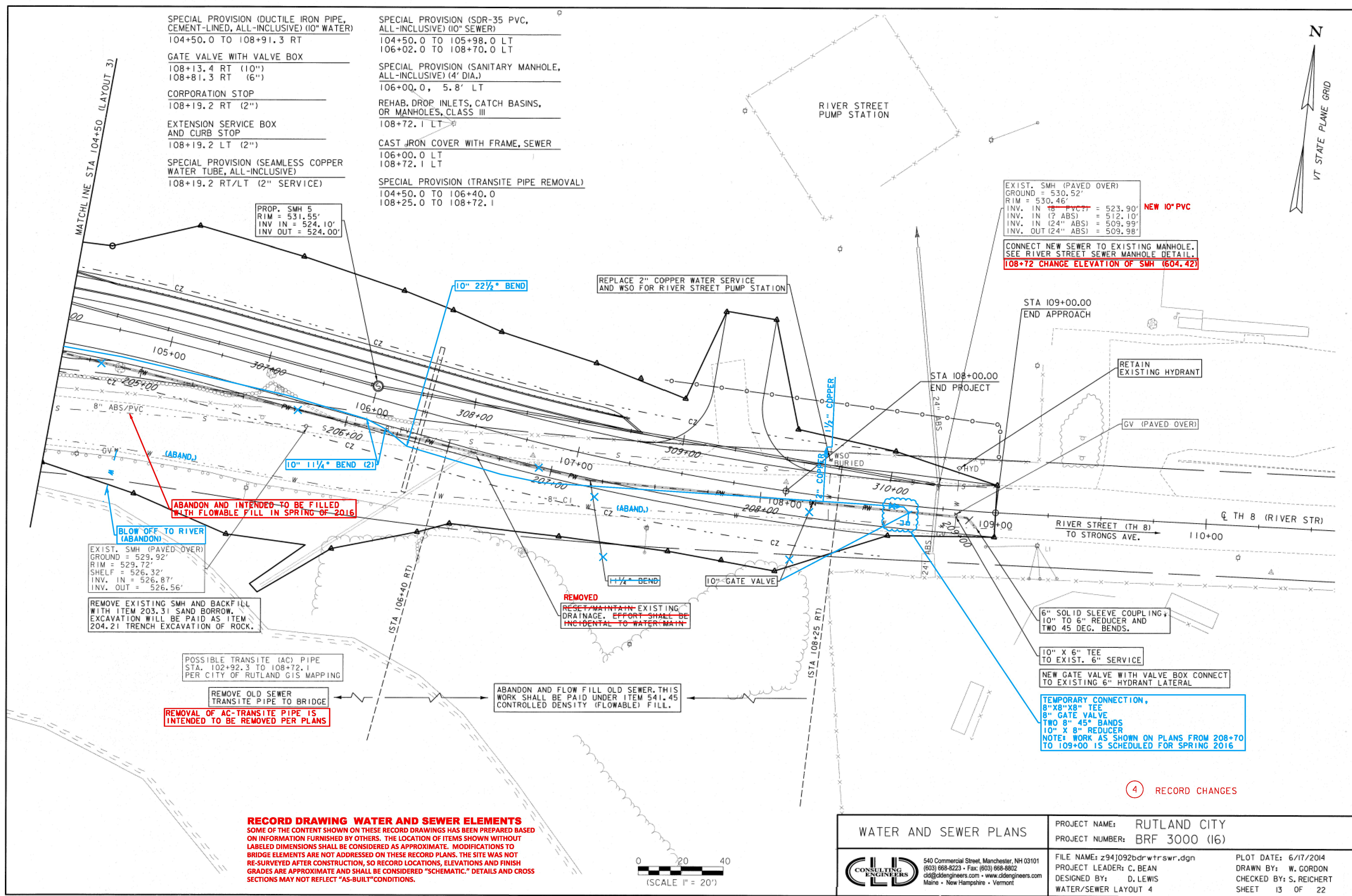


- SPECIAL PROVISION (DUCTILE IRON PIPE, CEMENT-LINED, ALL-INCLUSIVE) (10" WATER)
104+50.0 TO 108+91.3 RT
- GATE VALVE WITH VALVE BOX
108+13.4 RT (10")
108+81.3 RT (6")
- CORPORATION STOP
108+19.2 RT (2")
- EXTENSION SERVICE BOX AND CURB STOP
108+19.2 LT (2")
- SPECIAL PROVISION (SEAMLESS COPPER WATER TUBE, ALL-INCLUSIVE)
108+19.2 RT/LT (2" SERVICE)
- SPECIAL PROVISION (SDR-35 PVC, ALL-INCLUSIVE) (10" SEWER)
104+50.0 TO 105+98.0 LT
106+02.0 TO 108+70.0 LT
- SPECIAL PROVISION (SANITARY MANHOLE, ALL-INCLUSIVE) (4' DIA.)
106+00.0, 5.8' LT
- REHAB. DROP INLETS, CATCH BASINS, OR MANHOLES, CLASS III
108+72.1 LT
- CAST IRON COVER WITH FRAME, SEWER
106+00.0 LT
108+72.1 LT
- SPECIAL PROVISION (TRANSITE PIPE REMOVAL)
104+50.0 TO 106+40.0
108+25.0 TO 108+72.1



PROP. SMH 5
RIM = 531.55'
INV. IN = 524.10'
INV. OUT = 524.00'

EXIST. SMH (PAVED OVER)
GROUND = 530.52'
RIM = 530.46'
INV. IN (8" PVC) = 523.90'
INV. IN (2" ABS) = 512.10'
INV. IN (24" ABS) = 509.99'
INV. OUT (24" ABS) = 509.98'

CONNECT NEW SEWER TO EXISTING MANHOLE. SEE RIVER STREET SEWER MANHOLE DETAIL.
108+72 CHANGE ELEVATION OF SMH (604.42)

ABANDON AND INTENDED TO BE FILLED WITH FLOWABLE FILL IN SPRING OF 2016

BLOW OFF TO RIVER (ABANDON)
EXIST. SMH (PAVED OVER)
GROUND = 529.92'
RIM = 529.72'
SHELF = 526.32'
INV. IN = 526.87'
INV. OUT = 526.56'

REMOVE EXISTING SMH AND BACKFILL WITH ITEM 203.31 SAND BORROW. EXCAVATION WILL BE PAID AS ITEM 204.21 TRENCH EXCAVATION OF ROCK.

POSSIBLE TRANSITE (AC) PIPE
STA. 102+92.3 TO 108+72.1
PER CITY OF RUTLAND GIS MAPPING

REMOVE OLD SEWER TRANSITE PIPE TO BRIDGE
REMOVAL OF AC-TRANSITE PIPE IS INTENDED TO BE REMOVED PER PLANS

ABANDON AND FLOW FILL OLD SEWER. THIS WORK SHALL BE PAID UNDER ITEM 541.45 CONTROLLED DENSITY (FLOWABLE) FILL.

REMOVED
RESET/MAINTAIN EXISTING DRAINAGE. EFFORT SHALL BE INCIDENTAL TO WATER MAIN

6" SOLID SLEEVE COUPLING, 10" TO 6" REDUCER AND TWO 45 DEG. BENDS.

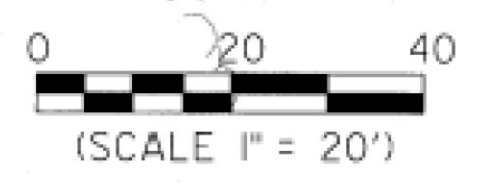
10" X 6" TEE TO EXIST. 6" SERVICE

NEW GATE VALVE WITH VALVE BOX CONNECT TO EXISTING 6" HYDRANT LATERAL

TEMPORARY CONNECTION, 8"X8"X8" TEE, 8" GATE VALVE, TWO 8" 45° BANDS, 10" X 8" REDUCER
NOTE: WORK AS SHOWN ON PLANS FROM 208+70 TO 109+00 IS SCHEDULED FOR SPRING 2016

4 RECORD CHANGES

RECORD DRAWING WATER AND SEWER ELEMENTS
SOME OF THE CONTENT SHOWN ON THESE RECORD DRAWINGS HAS BEEN PREPARED BASED ON INFORMATION FURNISHED BY OTHERS. THE LOCATION OF ITEMS SHOWN WITHOUT LABELED DIMENSIONS SHALL BE CONSIDERED AS APPROXIMATE. MODIFICATIONS TO BRIDGE ELEMENTS ARE NOT ADDRESSED ON THESE RECORD PLANS. THE SITE WAS NOT RE-SURVEYED AFTER CONSTRUCTION, SO RECORD LOCATIONS, ELEVATIONS AND FINISH GRADES ARE APPROXIMATE AND SHALL BE CONSIDERED "SCHEMATIC." DETAILS AND CROSS SECTIONS MAY NOT REFLECT "AS-BUILT" CONDITIONS.



WATER AND SEWER PLANS		PROJECT NAME: RUTLAND CITY	PLOT DATE: 6/17/2014
		PROJECT NUMBER: BRF 3000 (16)	DRAWN BY: W. GORDON
	540 Commercial Street, Manchester, NH 03101 (603) 668-8223 • Fax: (603) 668-8802 cid@cdengineers.com • www.cdengineers.com Maine • New Hampshire • Vermont	FILE NAME: z94j092bdrwtrswr.dgn	CHECKED BY: S. REICHERT
		PROJECT LEADER: C. BEAN	
		DESIGNED BY: D. LEWIS	SHEET 13 OF 22