

SPECIAL PROVISION (DUCTILE IRON PIPE, CEMENT-LINED, ALL-INCLUSIVE) (10" WATER)
501+30.0 TO 502+25.0 RT

GATE VALVE WITH VALVE BOX
502+06.2 RT (10")

CORPORATION STOP
501+39.95 RT (1")

EXTENSION SERVICE BOX AND CURB STOP
501+39.95 LT (1")

SPECIAL PROVISION (SEAMLESS COPPER WATER TUBE, ALL-INCLUSIVE)
501+39.95 RT/LT (1" SERVICE)

SPECIAL PROVISION (DUCTILE IRON PIPE, CEMENT-LINED, ALL-INCLUSIVE) (10" SEWER)
501+30.0 TO 501+34.1 LT

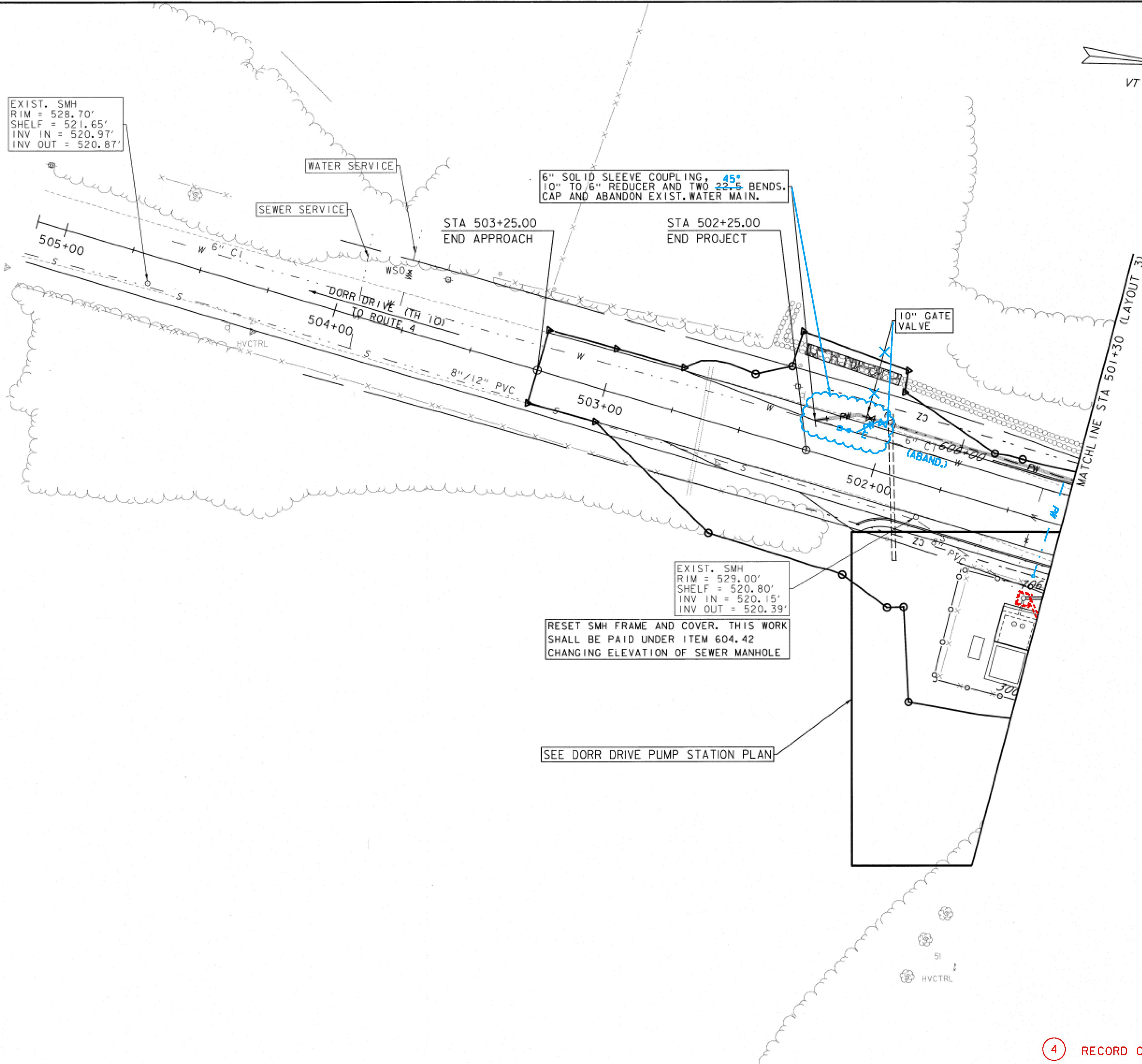
CHANGING ELEVATION OF SEWER MANHOLES
501+80.6 LT

EXIST. SMH
RIM = 528.70'
SHELF = 521.65'
INV IN = 520.97'
INV OUT = 520.87'

EXIST. SMH
RIM = 529.00'
SHELF = 520.80'
INV IN = 520.15'
INV OUT = 520.39'

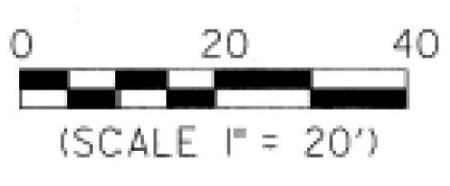
RESET SMH FRAME AND COVER. THIS WORK SHALL BE PAID UNDER ITEM 604.42 CHANGING ELEVATION OF SEWER MANHOLE


SEE DORR DRIVE PUMP STATION PLAN



④ RECORD CHANGES

RECORD DRAWING WATER AND SEWER ELEMENTS
SOME OF THE CONTENT SHOWN ON THESE RECORD DRAWINGS HAS BEEN PREPARED BASED ON INFORMATION FURNISHED BY OTHERS. THE LOCATION OF ITEMS SHOWN WITHOUT LABELED DIMENSIONS SHALL BE CONSIDERED AS APPROXIMATE. MODIFICATIONS TO BRIDGE ELEMENTS ARE NOT ADDRESSED ON THESE RECORD PLANS. THE SITE WAS NOT RE-SURVEYED AFTER CONSTRUCTION, SO RECORD LOCATIONS, ELEVATIONS AND FINISH GRADES ARE APPROXIMATE AND SHALL BE CONSIDERED "SCHEMATIC." DETAILS AND CROSS SECTIONS MAY NOT REFLECT "AS-BUILT" CONDITIONS.



WATER AND SEWER PLANS 	PROJECT NAME: RUTLAND CITY	PLOT DATE: 6/17/2014
	PROJECT NUMBER: BRF 3000 (16)	DESIGNED BY: D. LEWIS
<small>540 Commercial Street, Manchester, NH 03101 (603) 668-8223 • Fax: (603) 668-8802 cl@cldeengineers.com • www.cldeengineers.com Maine • New Hampshire • Vermont</small>	FILE NAME: z94j092bdrwtrswr.dgn	DRAWN BY: W. GORDON
	PROJECT LEADER: C. BEAN	
	DESIGNED BY: D. LEWIS	
	WATER/SEWER LAYOUT 2	SHEET 11 OF 22