

SPECIAL PROVISION (DUCTILE IRON PIPE, CEMENT-LINED, ALL-INCLUSIVE) (10" WATER)
495+60.0 TO 499+25.0 RT

GATE VALVE WITH VALVE BOX
495+75.0 RT (10")

CORPORATION STOP
498+96.8 RT (1")

EXTENSION SERVICE BOX AND CURB STOP
498+96.8 RT (1")

SPECIAL PROVISION (SEAMLESS COPPER WATER TUBE, ALL-INCLUSIVE)
498+96.8 RT (1" SERVICE)

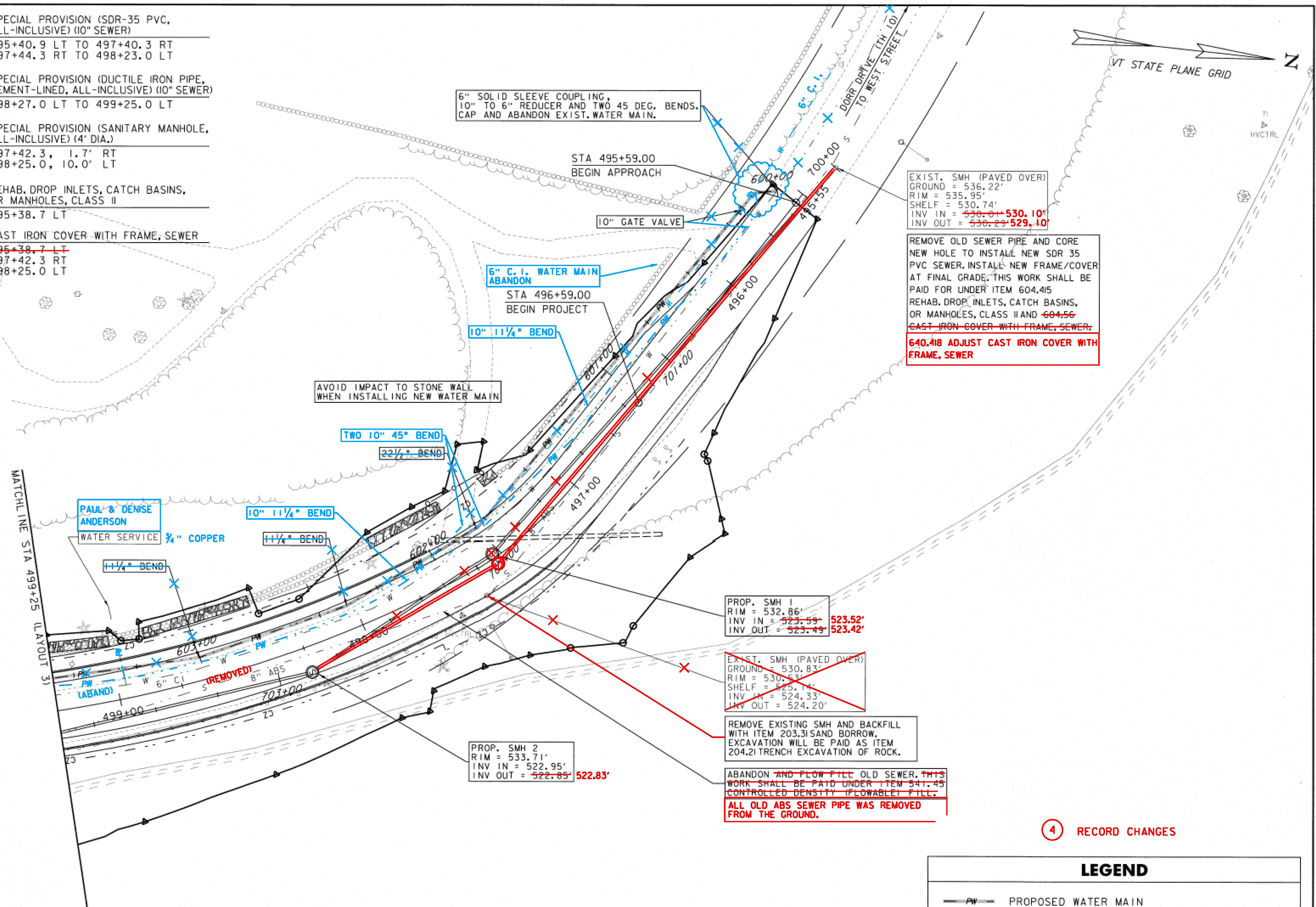
SPECIAL PROVISION (SDR-35 PVC, ALL-INCLUSIVE) (10" SEWER)
495+40.9 LT TO 497+40.3 RT
497+44.3 RT TO 498+23.0 LT

SPECIAL PROVISION (DUCTILE IRON PIPE, CEMENT-LINED, ALL-INCLUSIVE) (10" SEWER)
498+27.0 LT TO 499+25.0 LT

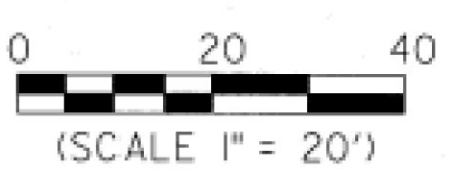
SPECIAL PROVISION (SANITARY MANHOLE, ALL-INCLUSIVE) (4' DIA.)
497+42.3, 1.7' RT
498+25.0, 10.0' LT

REHAB. DROP INLETS, CATCH BASINS, OR MANHOLES, CLASS II
495+38.7 LT

CAST IRON COVER WITH FRAME, SEWER
~~495+38.7 LT~~
497+42.3 RT
498+25.0 LT



RECORD DRAWING WATER AND SEWER ELEMENTS
SOME OF THE CONTENT SHOWN ON THESE RECORD DRAWINGS HAS BEEN PREPARED BASED ON INFORMATION FURNISHED BY OTHERS. THE LOCATION OF ITEMS SHOWN WITHOUT LABELED DIMENSIONS SHALL BE CONSIDERED AS APPROXIMATE. MODIFICATIONS TO BRIDGE ELEMENTS ARE NOT ADDRESSED ON THESE RECORD PLANS. THE SITE WAS NOT RE-SURVEYED AFTER CONSTRUCTION, SO RECORD LOCATIONS, ELEVATIONS AND FINISH GRADES ARE APPROXIMATE AND SHALL BE CONSIDERED "SCHEMATIC." DETAILS AND CROSS SECTIONS MAY NOT REFLECT "AS-BUILT" CONDITIONS.



4 RECORD CHANGES

LEGEND	
	PROPOSED WATER MAIN
	PROPOSED SANITARY SEWER FORCE MAIN
	PROPOSED GRAVITY SANITARY SEWER/MANHOLE

WATER AND SEWER PLANS	
PROJECT NAME:	RUTLAND CITY
PROJECT NUMBER:	BRF 3000 (16)
FILE NAME:	z94j092bdrwtrswr.dgn
PROJECT LEADER:	C. BEAN
DESIGNED BY:	D. LEWIS
WATER/SEWER LAYOUT 1	
PLOT DATE:	6/17/2014
DRAWN BY:	W. GORDON
CHECKED BY:	S. REICHERT
SHEET	10 OF 22

CLD CONSULTING ENGINEERS
540 Commercial Street, Manchester, NH 03101
(603) 668-8223 • Fax: (603) 668-8802
cld@cldeengineers.com • www.cldeengineers.com
Maine • New Hampshire • Vermont