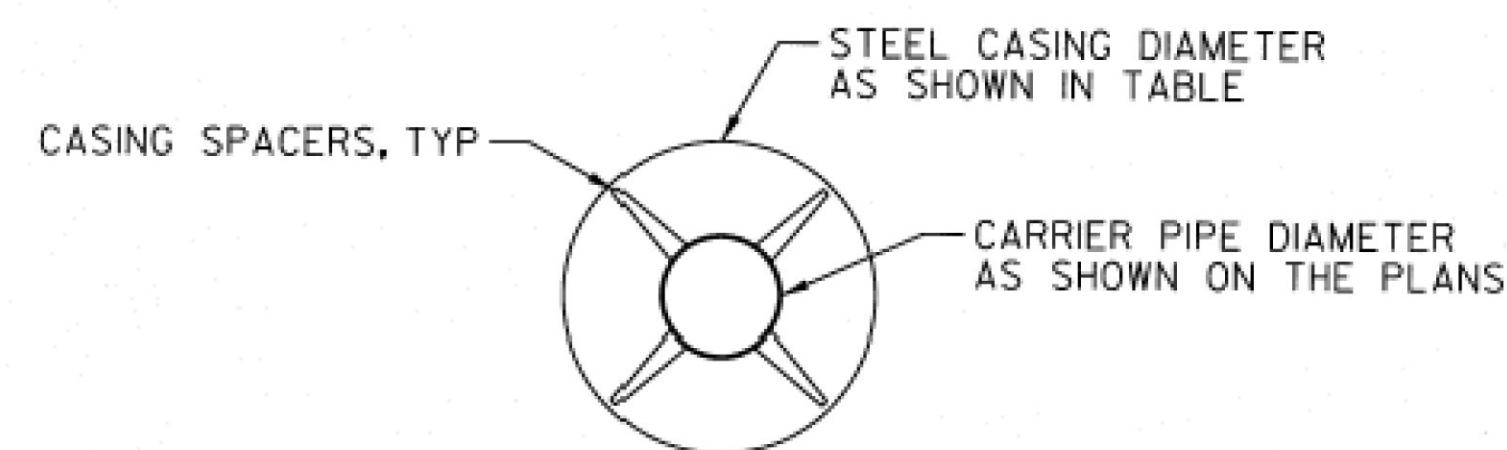


**PROFILE VIEW**

CARRIER PIPE	CARRIER PIPE DIA	CASING DIA REQUIRED
WATER MAIN	10"	20"
SEWER FORCE MAIN	6"	16"



**SECTION VIEW**

**NOTES**

- HOLES IN ABUTMENT WALLS SHALL BE SIZED TO ALLOW CASING AND GROUT PLACEMENT.
- STEEL PIPE CASING SHALL BE SINGLE PIECE (WITHOUT WELDS) OF SMOOTH STEEL PIPE FABRICATED IN ACCORDANCE WITH AWWA C200. LENGTHS OF CASING SHALL BE AS LONG AS PRACTICAL FOR SITE CONDITIONS, BUT MUST EXTEND 2 FEET (MIN.) PAST APPROACH SLAB.
- INSULATION SHALL BE 3-INCH POLYISOCYANURATE. INSULATION CAN BE INTERRUPTED AT CASING SPACERS.
- STEEL PIPE CASING WALL THICKNESS SHALL BE SCHEDULE 40, 0.375-INCH THICK. VERIFY CASING SIZE PRIOR TO ORDERING AND SIZING CASING SPACERS. EXTERIOR COAL-TAR COATING SHALL COMPLY WITH AWWA C203.
- CASING SPACERS SHALL BE STAINLESS STEEL, RESTRAINED-TYPE BOLTED SPACERS AND SHALL HAVE A MAXIMUM SPACING AS SHOWN OR AS RECOMMENDED BY MANUFACTURER, WHICHEVER IS LESS.
- ALL MATERIALS AND WORK IN THIS DETAIL SHALL BE PAID UNDER ITEM 900.640 SPECIAL PROVISION (DUCTILE IRON PIPE, CEMENT-LINED, ALL-INCLUSIVE) (10" WATER IN CASING) OR 900.640 SPECIAL PROVISION (DUCTILE IRON PIPE, CEMENT-LINED, ALL-INCLUSIVE) (6" FORCE MAIN IN CASING) AS APPLICABLE, UNLESS OTHERWISE SPECIFIED.

**STEEL CASING DETAIL**

NOT TO SCALE

**RECORD DRAWING WATER AND SEWER ELEMENTS**  
 SOME OF THE CONTENT SHOWN ON THESE RECORD DRAWINGS HAS BEEN PREPARED BASED ON INFORMATION FURNISHED BY OTHERS. THE LOCATION OF ITEMS SHOWN WITHOUT LABELED DIMENSIONS SHALL BE CONSIDERED AS APPROXIMATE. MODIFICATIONS TO BRIDGE ELEMENTS ARE NOT ADDRESSED ON THESE RECORD PLANS. THE SITE WAS NOT RE-SURVEYED AFTER CONSTRUCTION, SO RECORD LOCATIONS, ELEVATIONS AND FINISH GRADES ARE APPROXIMATE AND SHALL BE CONSIDERED "SCHEMATIC." DETAILS AND CROSS SECTIONS MAY NOT REFLECT "AS-BUILT" CONDITIONS.

	WATER AND SEWER PLANS	PROJECT NAME: RUTLAND CITY PROJECT NUMBER: BRF 3000(I6)
	540 Commercial Street, Manchester, NH 03101 (603) 668-4223 • Fax: (603) 668-8802 cld@cldeengineers.com • www.cldeengineers.com Maine • New Hampshire • Vermont	FILE NAME: z94j092wtrswrdef.dgn PROJECT LEADER: C. BEAN DESIGNED BY: D. LEWIS WATER/SEWER DETAIL 4