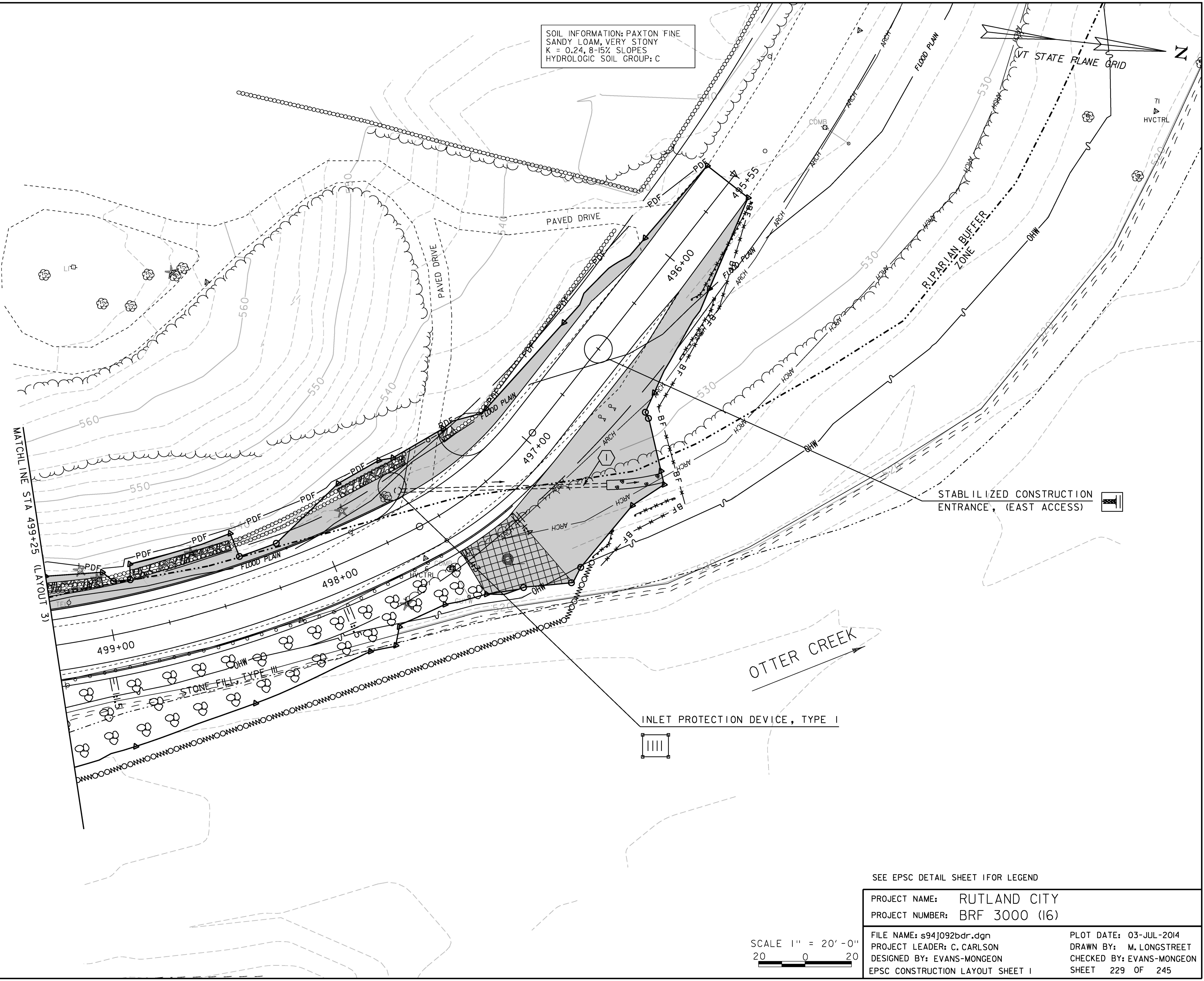
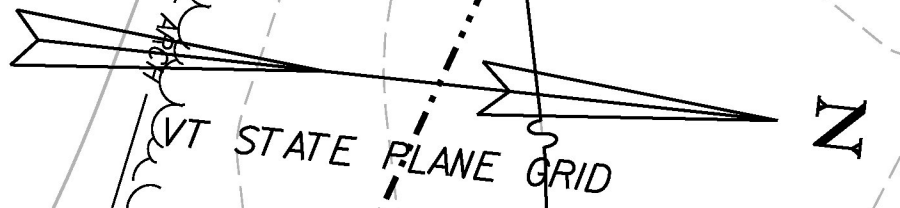


SOIL INFORMATION: PAXTON FINE
 SANDY LOAM, VERY STONY
 K = 0.24, 8-15% SLOPES
 HYDROLOGIC SOIL GROUP: C



STABILIZED CONSTRUCTION
 ENTRANCE, (EAST ACCESS)

OTTER CREEK

INLET PROTECTION DEVICE, TYPE I

MATCHLINE STA 499+25 (LAYOUT 3)

SEE EPSC DETAIL SHEET I FOR LEGEND

PROJECT NAME:	RUTLAND CITY
PROJECT NUMBER:	BRF 3000 (16)
FILE NAME:	s94j092bdr.dgn
PROJECT LEADER:	C. CARLSON
DESIGNED BY:	EVANS-MONGEON
EPSC CONSTRUCTION LAYOUT SHEET I	
PLOT DATE:	03-JUL-2014
DRAWN BY:	M. LONGSTREET
CHECKED BY:	EVANS-MONGEON
SHEET	229 OF 245

