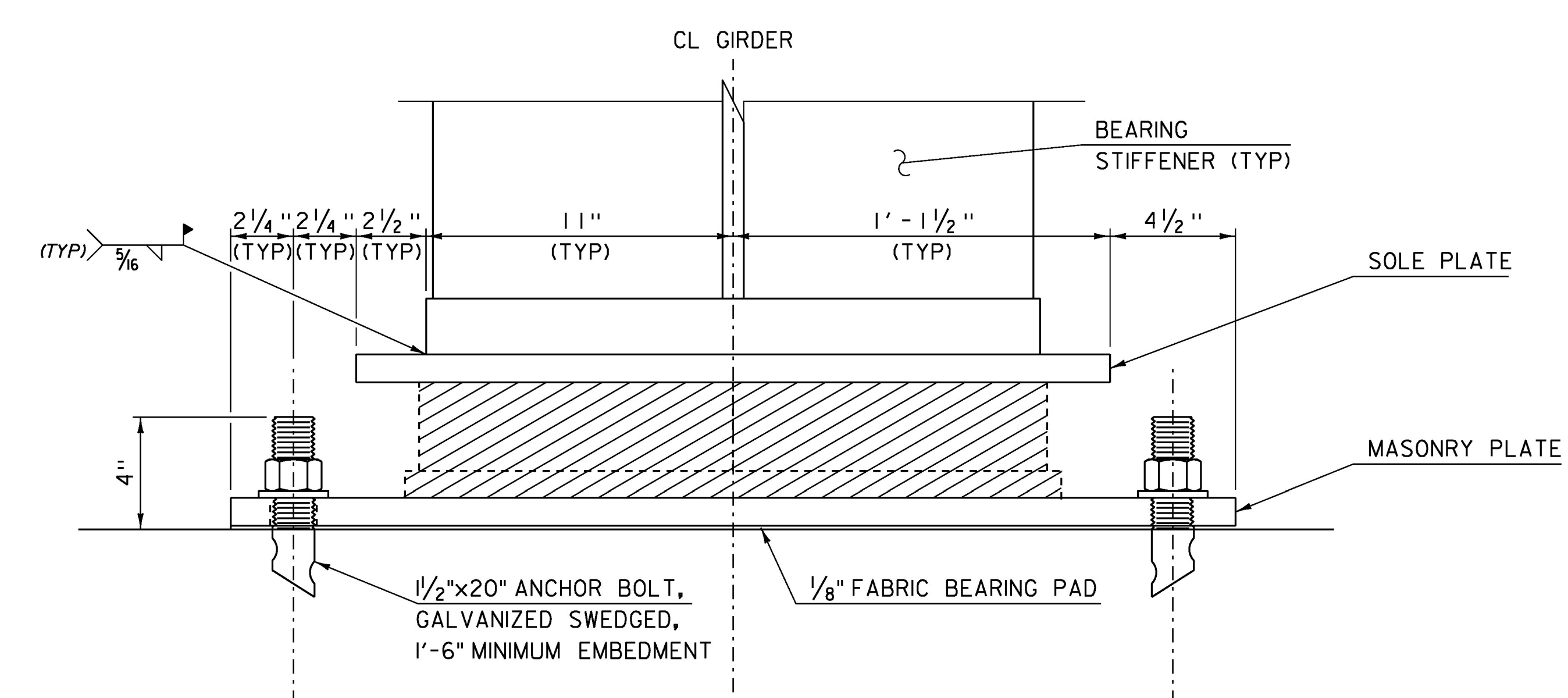


FIXED BEARING TYPICAL PLAN
(NTS)

DESIGN LOAD EFFECTS (KIP)	SERVICE LIMIT STATE	VERTICAL	MAX	529
			PERMANENT	342
			MIN	342
	STRENGTH LIMIT STATE	VERTICAL	TRANSVERSE	108
			LONGITUDINAL	15
			LONGITUDINAL	18
TRANSLATION	SERVICE LIMIT STATE	IRREVERSIBLE	TRANSVERSE	0
			LONGITUDINAL	0
	REVERSIBLE	TRANSVERSE	0	
		LONGITUDINAL	0	
	STRENGTH LIMIT STATE	IRREVERSIBLE	TRANSVERSE	0
			LONGITUDINAL	0
REVERSIBLE	TRANSVERSE	0		
	LONGITUDINAL	0		
ROTATION (RAD.)	SERVICE LIMIT STATE	IRREVERSIBLE	TRANSVERSE	0
			LONGITUDINAL	0.006
	REVERSIBLE	TRANSVERSE	0	
		LONGITUDINAL	0.003	
	STRENGTH LIMIT STATE	IRREVERSIBLE	TRANSVERSE	0
			LONGITUDINAL	0.017
REVERSIBLE	TRANSVERSE	0		
	LONGITUDINAL	0.005		



SECTION FIXED BEARING
(NTS)

THESE BEARINGS ARE LOCATED AT THE PIER. PAYMENT WILL BE UNDER ITEM 531.15, BEARING DEVICE ASSEMBLY, HIGH-LOAD MULTI ROTATIONAL.

* SEE FINAL FABRICATION DRAWING FOR EXACT DIMENSION. BRIDGE SEATS MAY NEED ADJUSTMENT. THE CROSS HATCHED COMPONENTS OF THE BEARING ARE SHOWN FOR REPRESENTATIVE PURPOSES ONLY. THE ACTUAL CONFIGURATION OF THE COMPONENTS WILL BE DEPENDANT UPON THE BEARING FABRICATOR.

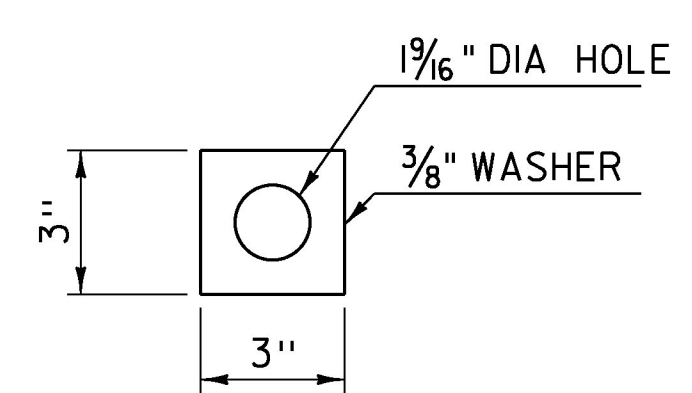
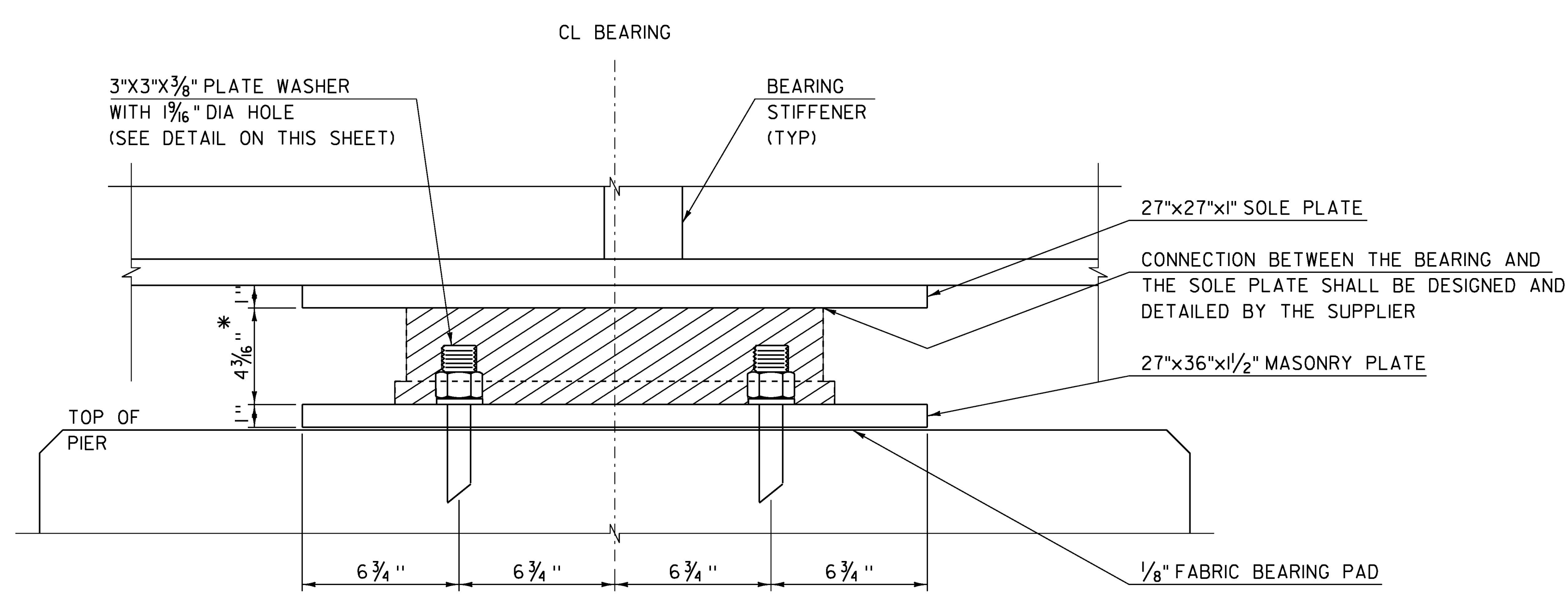


PLATE WASHER
(NTS)



FIXED BEARING ELEVATION
(NTS)

PROJECT NAME:	RUTLAND CITY
PROJECT NUMBER:	BRF 3000 (16)
FILE NAME:	s94j092brg.dgn
PROJECT LEADER:	C. CARLSON
DESIGNED BY:	EVANS-MONGEON
HIGH LOAD MULTI-ROTATIONAL BRG DETAILS	CHECKED BY: EVANS-MONGEON
	PLOT DATE: 03-JUL-2014
	DRAWN BY: C. MOONEY
	SHEET 175 OF 245