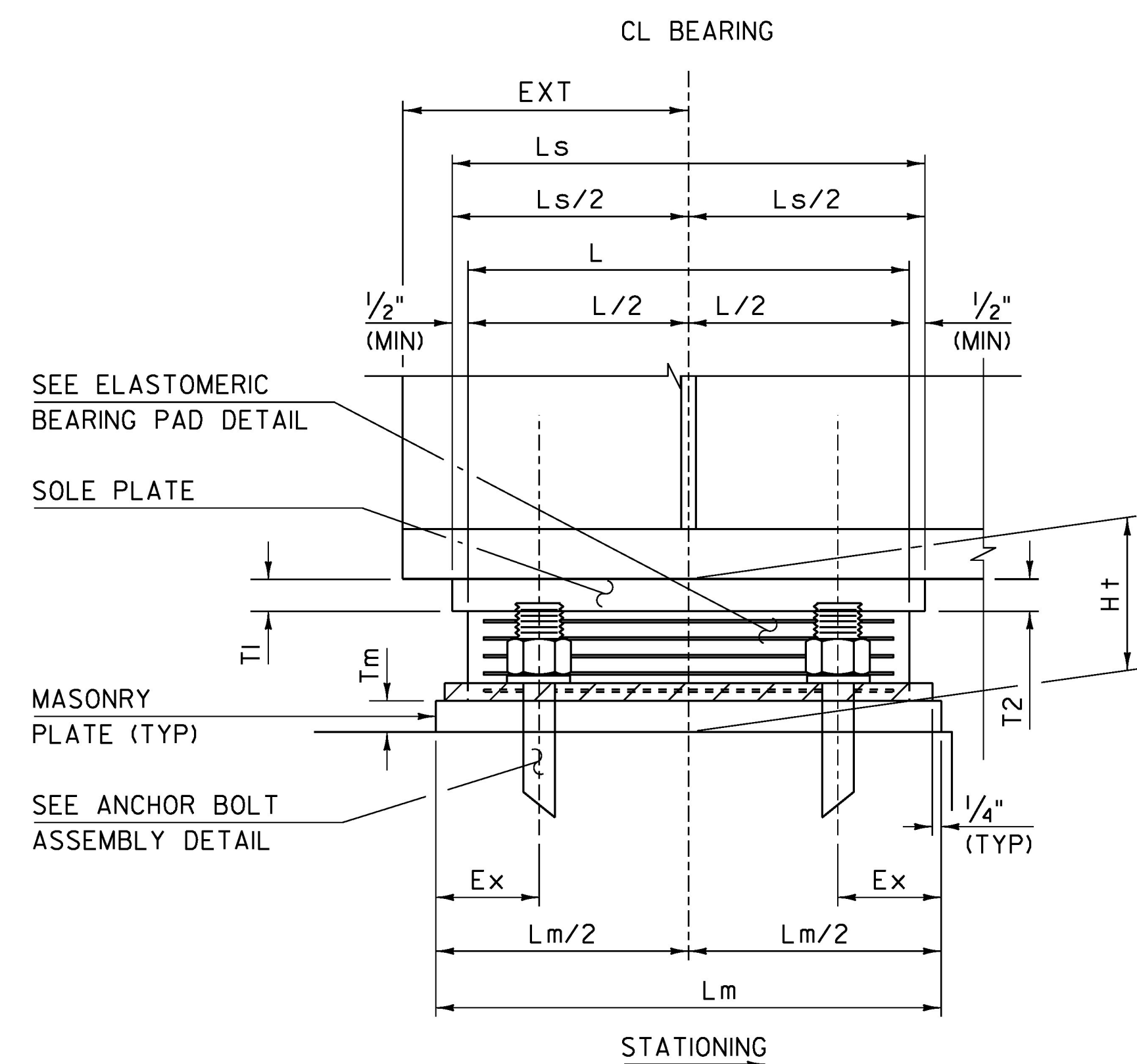
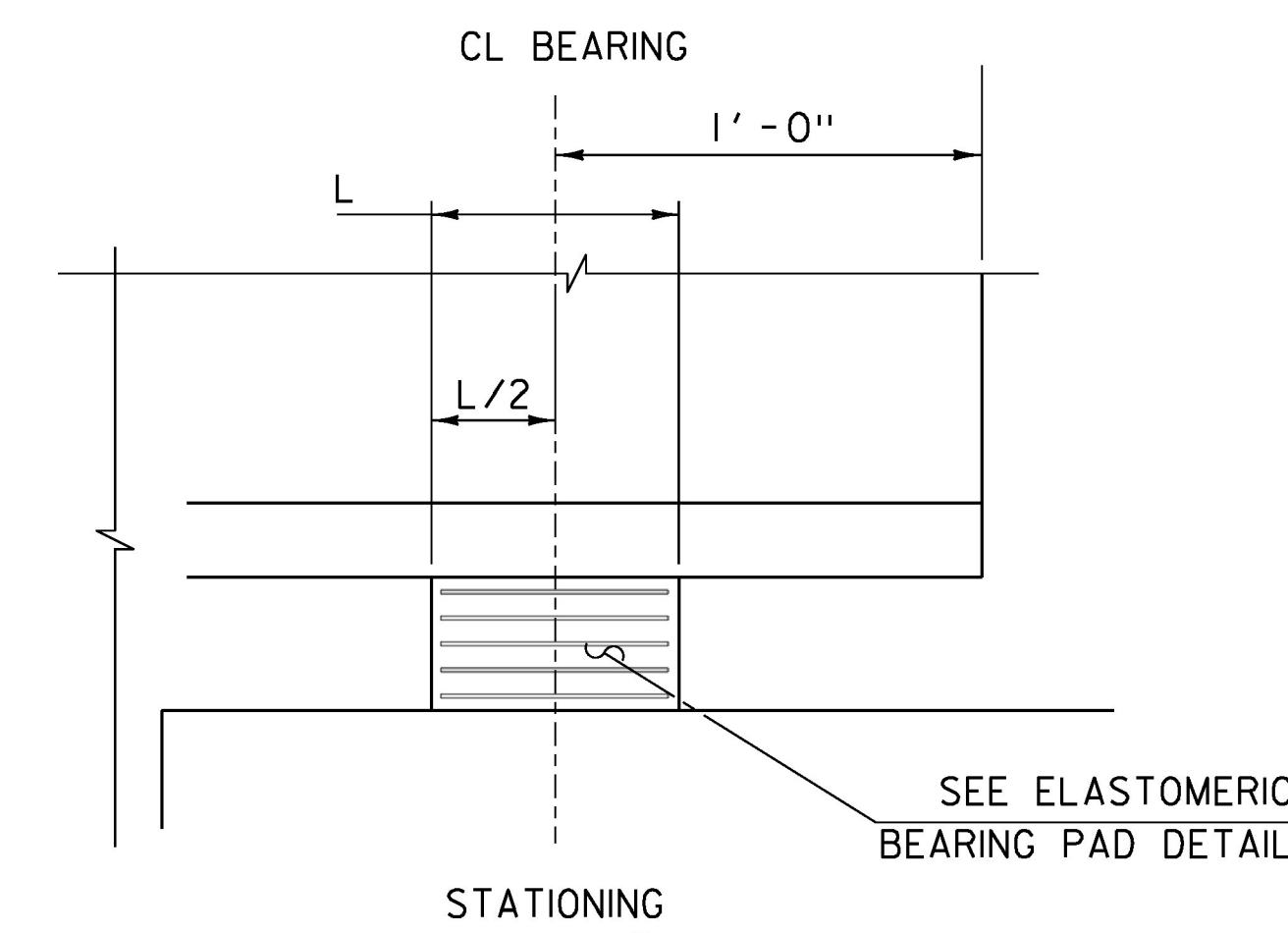


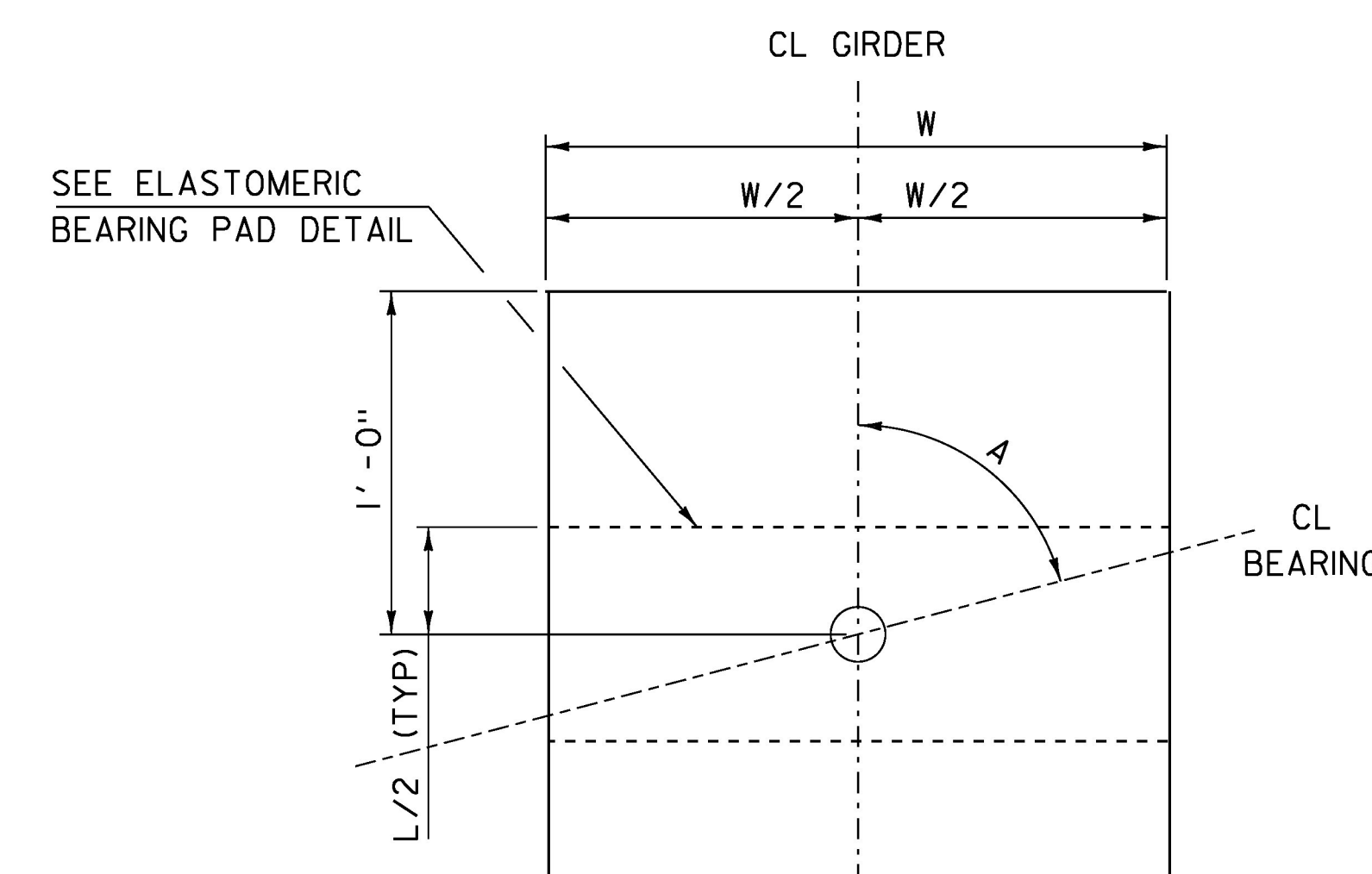
ABUTMENT 1 BEARING TYPICAL PLAN (NTS)



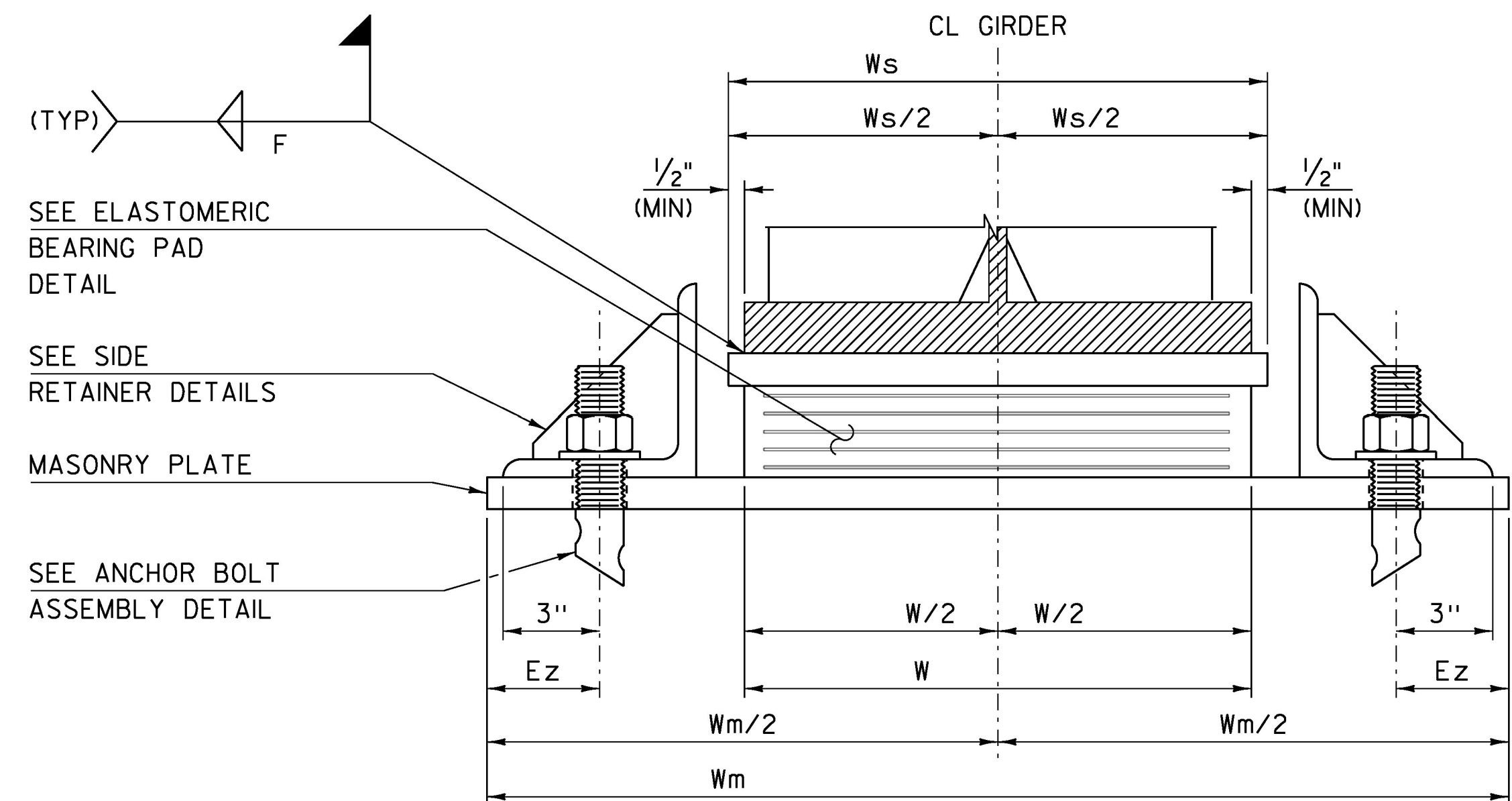
ABUTMENT 1 BEARING TYPICAL SECTION (NTS)



ABUTMENT 2 BEARING TYPICAL SECTION (NTS)

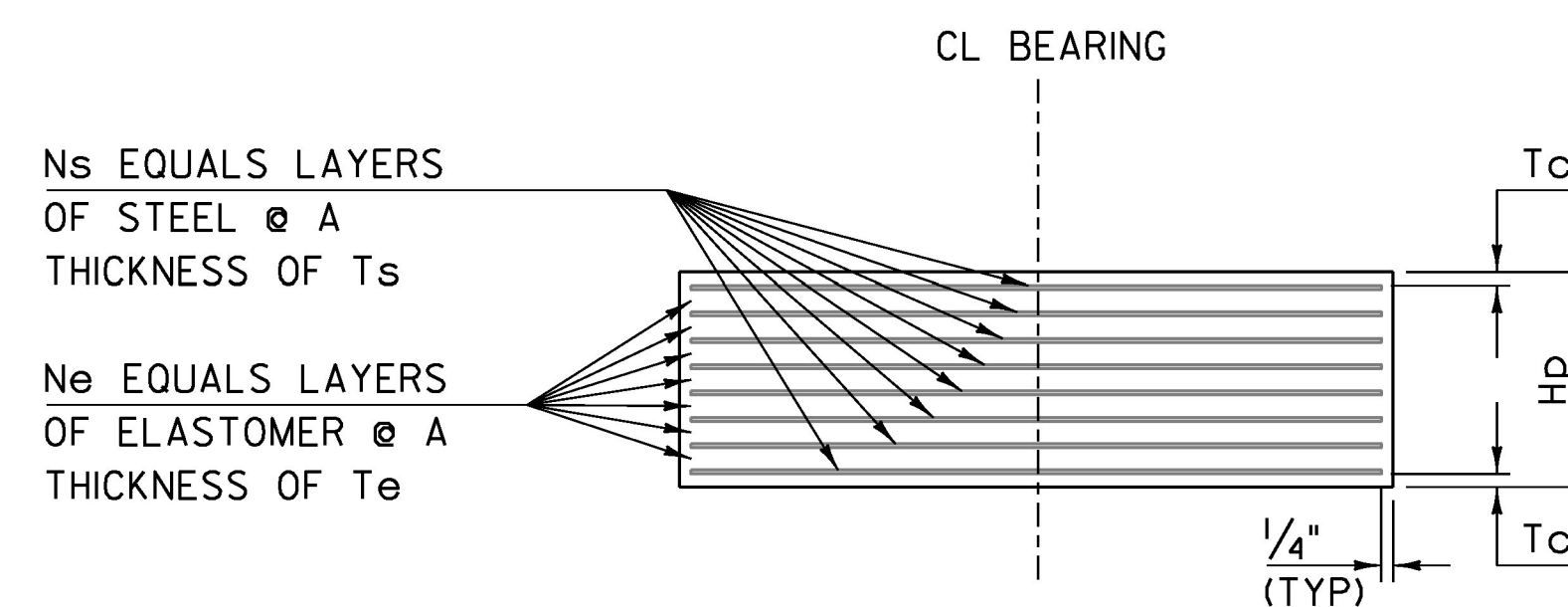


ABUTMENT 2 BEARING TYPICAL PLAN (NTS)

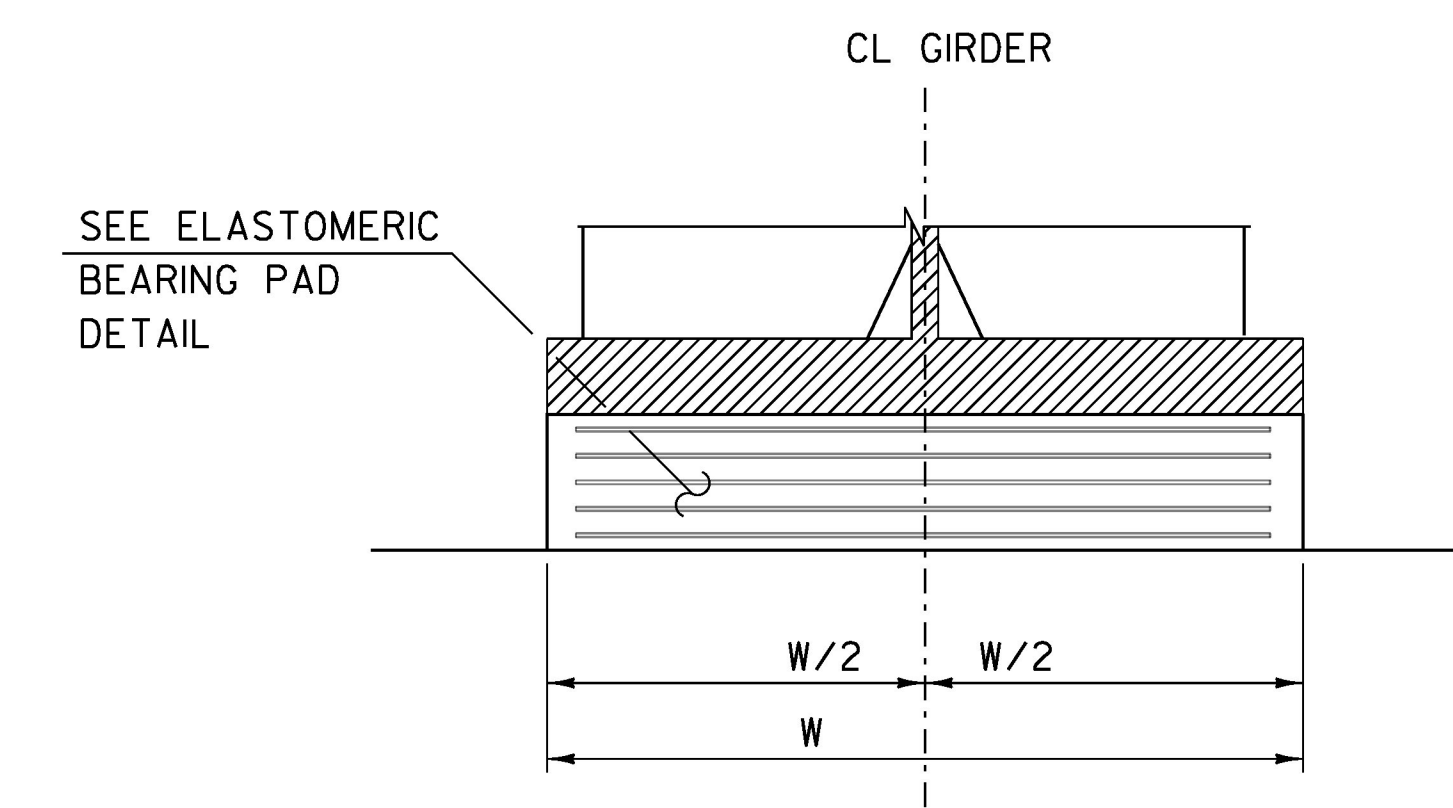


ABUTMENT 1 BEARING TYPICAL ELEVATION (NTS)

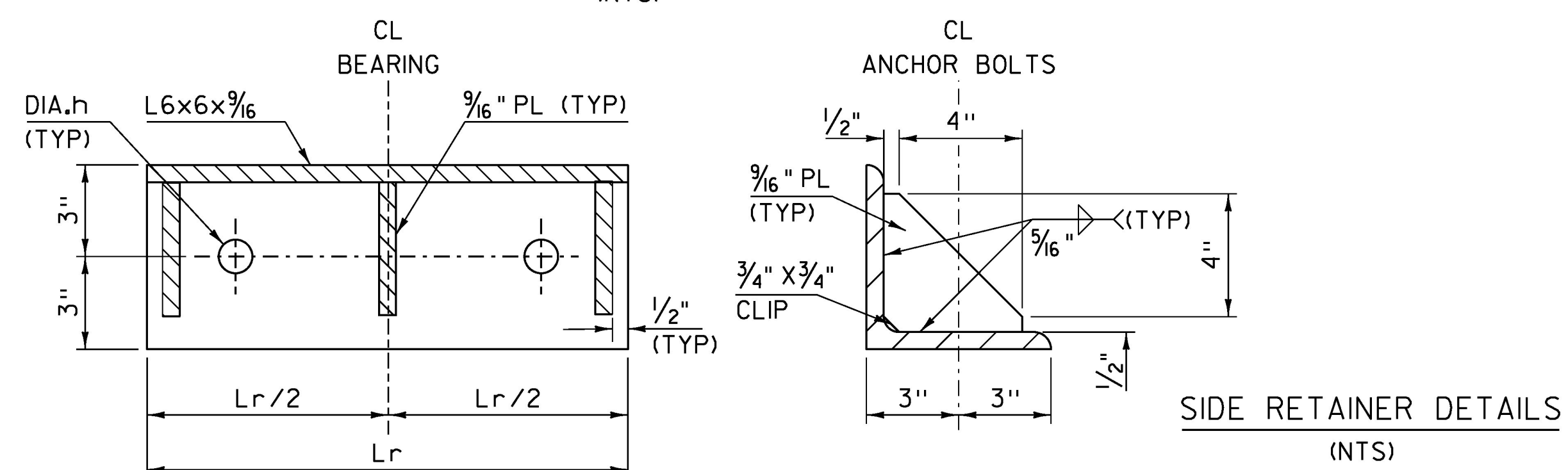
1. SECTION SHOWN AT BEGIN BRIDGE ACTUAL LOCATION MAY VARY.
2. VERTICAL LEG AND PLATES REMOVED FOR CLARITY.



ELASTOMERIC BEARING PAD DETAIL (NTS)



ABUTMENT 2 BEARING TYPICAL ELEVATION (NTS)



SIDE RETAINER DETAILS (NTS)

NOTES:

1. VERIFY THAT BRIDGE SEAT WIDTHS PROVIDE SUFFICIENT CONCRETE COVER FOR ANCHOR BOLTS.
2. SIDE RETAINERS TO BE L6x6x9/16
3. EXTENSION OF GIRDER PAST CL OF BEARING = EXT.
4. SEE BEARING TABLE ON BEARING NOTES SHEET IN PLANS FOR DIMENSIONS.
5. THESE BEARINGS ARE LOCATED AT THE ABUTMENTS. PAYMENT WILL BE MADE UNDER ITEM 531.17, BEARING DEVICE ASSEMBLY, STEEL REINFORCED ELASTOMERIC PAD.

PROJECT NAME:	RUTLAND CITY	PLOT DATE:	03-JUL-2014
PROJECT NUMBER:	BRF 3000 (16)	DRAWN BY:	C. MOONEY
FILE NAME:	s94j092brg.dgn	CHECKED BY:	M. EVANS-MONGEON
PROJECT LEADER:	C. CARLSON	SHEET	174 OF 245
DESIGNED BY:	M. EVANS-MONGEON		
EXPANSION BEARING DETAILS			