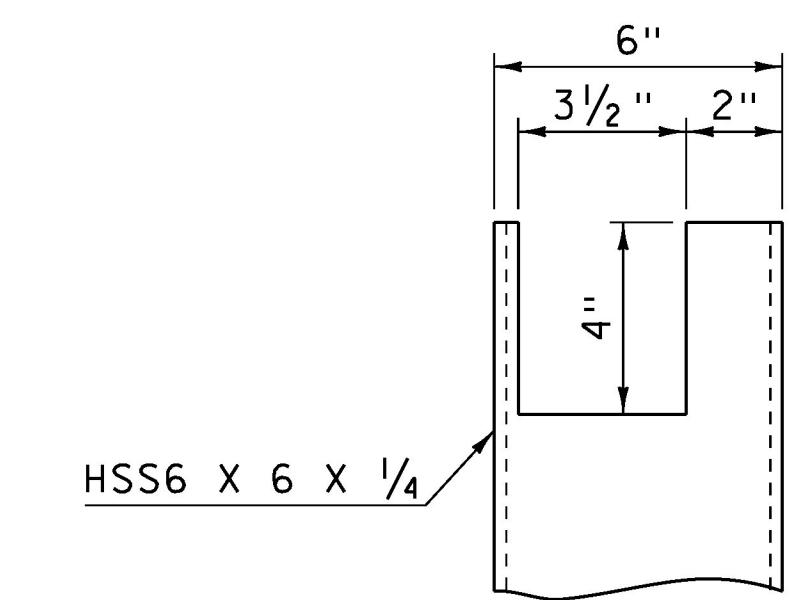


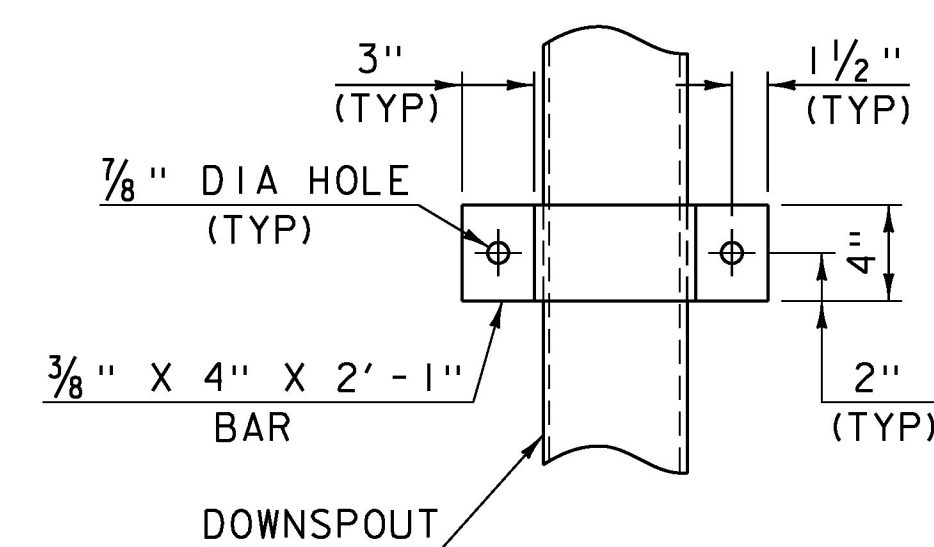
DOWNSPOUT ELEVATION
SCALE: 1" = 1'-0"



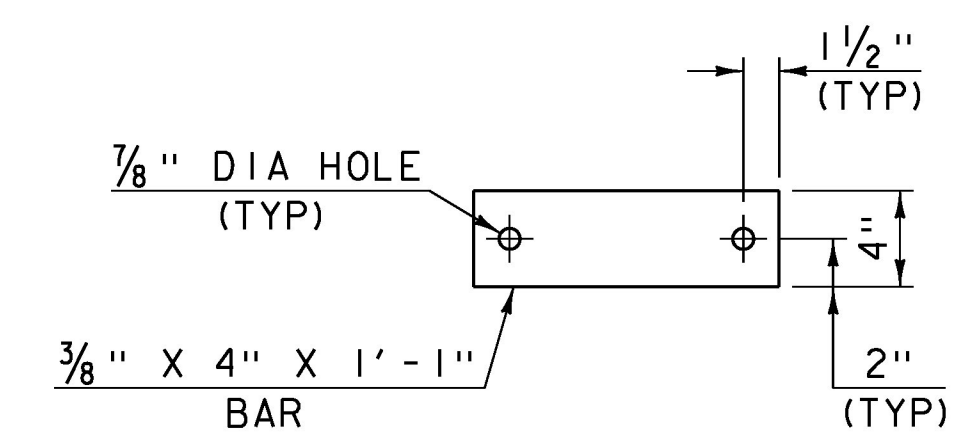
DOWNSPOUT CUTOUT DETAIL
SCALE: 3" = 1'-0"

NOTES:

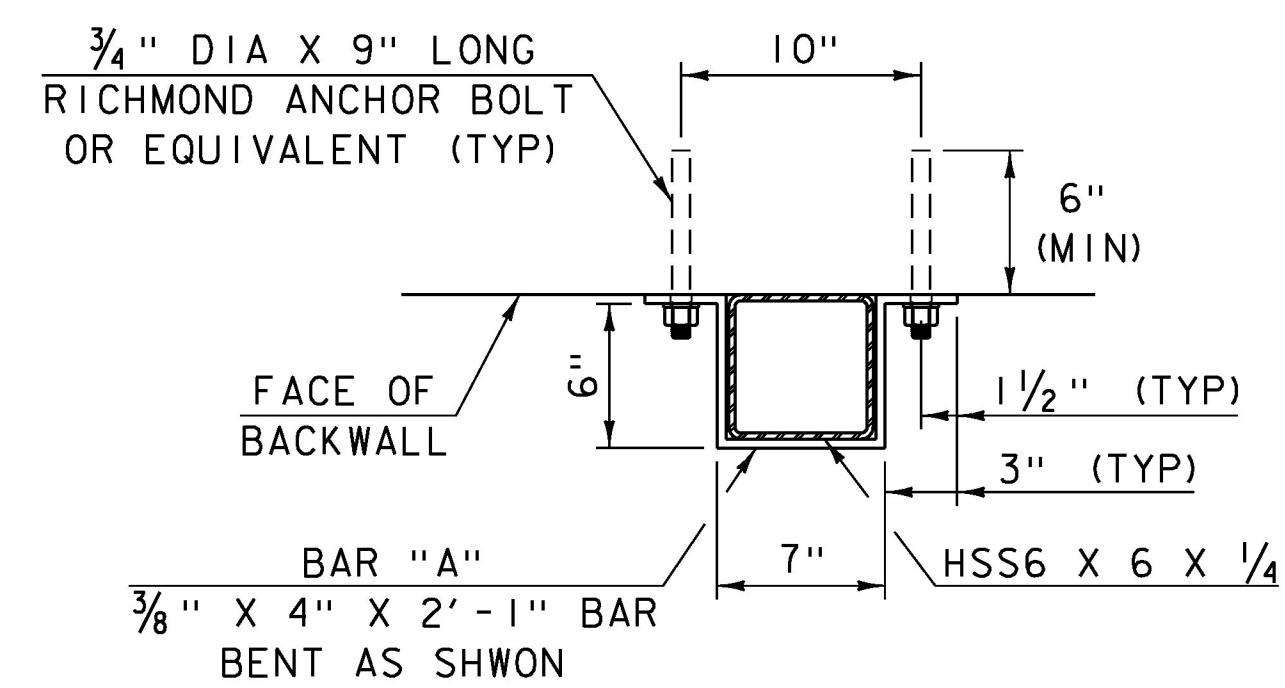
1. HOLLOW STRUCTURAL STEEL TUBING SHALL CONFORM TO SUBSECTION 506.02.
2. ALL PLATES, BARS, AND ANGLES SHALL CONFORM TO SUBSECTION 714.
3. DOWNSPOUTS SHALL BE GALVANIZED IN ACCORDANCE WITH SUBSECTION 726.08.
4. ALL BOLTS AND RELATED HARDWARE SHALL BE ASTM A307 AND SHALL BE GALVANIZED IN ACCORDANCE WITH AASHTO M 232M/M 232.
5. AREAS WHERE THE GALVANIZING HAS BEEN REMOVED FROM THE DOWNSPOUTS EITHER BY CUTTING, BURNING, WELDING, PLACING, OR ANY OTHER MEANS SHALL BE REPAIRED IN CONFORMANCE WITH SUBSECTION 726.08.
6. ALL MATERIALS AND INSTALLATION COSTS FOR THE DOWNSPOUTS, INCLUDING STEEL TUBING, RELATED HARDWARE, AND ANCHOR BOLTS SHALL BE PAID FOR UNDER ITEM 506.55 "STRUCTURAL STEEL, PLATE GIRDER".



ELEVATION OF BAR "A"
SCALE: 1 1/2" = 1'-0"



ELEVATION OF BAR "B"
SCALE: 1 1/2" = 1'-0"



DETAIL FOR ATTACHING DOWNSPOUT TO BACKWALL
PLAN VIEW
SCALE: 1 1/2" = 1'-0"

PROJECT NAME: RUTLAND CITY	PLOT DATE: 03-JUL-2014
PROJECT NUMBER: BRF 3000 (16)	DRAWN BY: G. ROY
FILE NAME: s94j092expj+.dgn	CHECKED BY: M. EVANS-MONGEON
PROJECT LEADER: C. CARLSON	SHEET 172 OF 245
DESIGNED BY: M. EVANS-MONGEON	
DOWNSPOUT DETAILS	