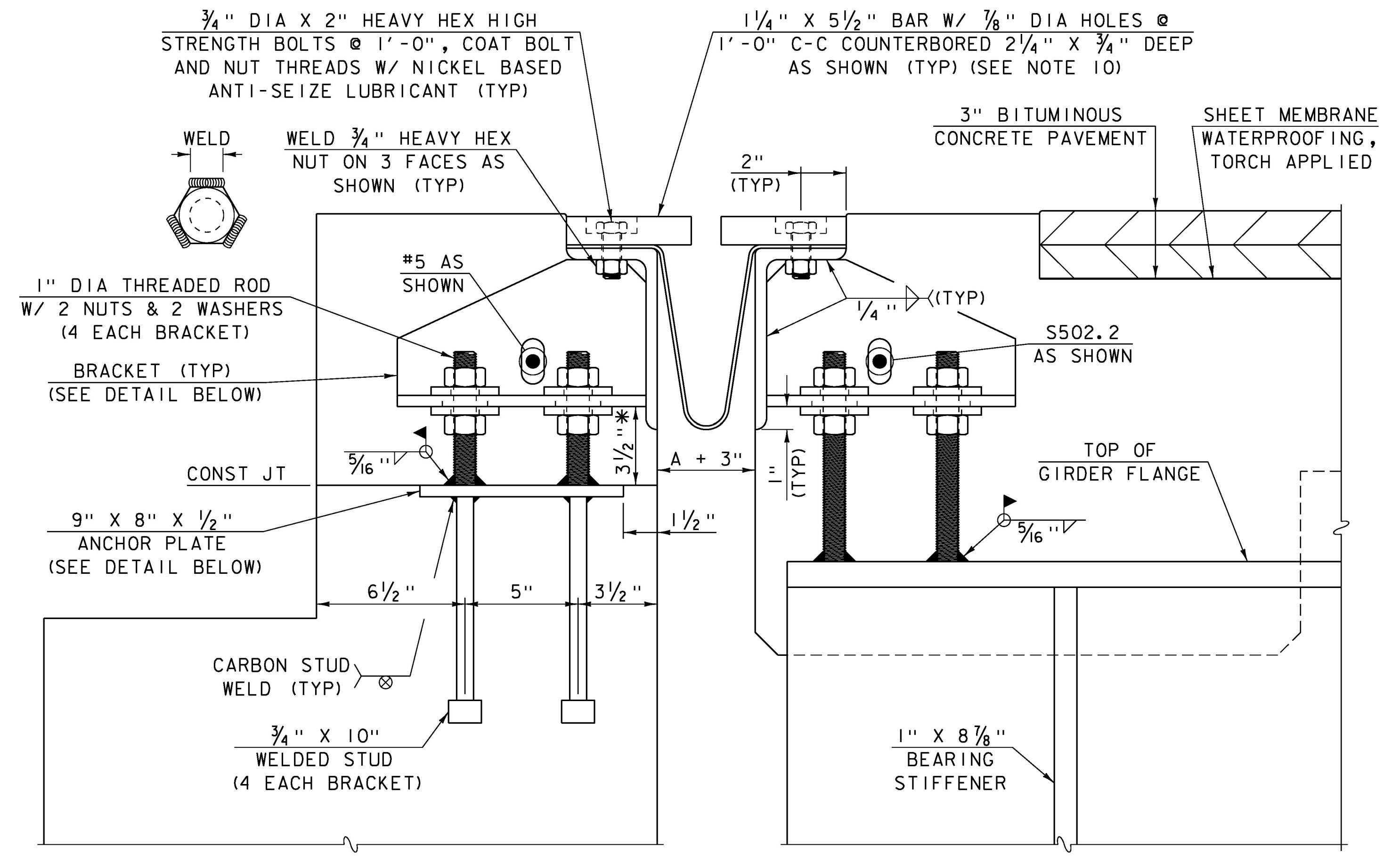


**TYPICAL SECTION BETWEEN GIRDERS**  
(NORMAL TO  $\bar{C}$  BEARING)



**TYPICAL SECTION AT GIRDERS**  
(NORMAL TO  $\bar{C}$  BEARING)

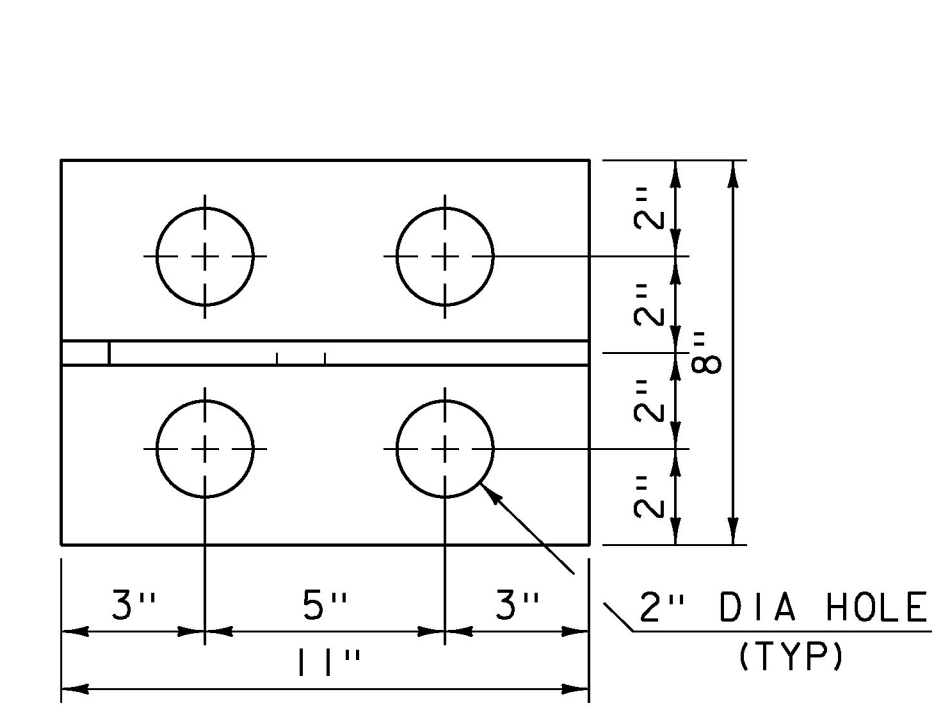
1. DETAILS ON THIS SHEET WILL BE PAID UNDER ITEM 516.11 "BRIDGE EXPANSION JOINT, VERMONT", UNLESS OTHERWISE SPECIFIED.
2. ALL STEEL COMPONENTS SHALL BE GALVANIZED OR METALIZED AND MEET THE REQUIREMENTS OF STD SPEC SUBSECTION 516.02. PRIOR TO GALVANIZING OR METALIZING, ALL CORNERS AND EDGES OF STEEL PLATES, SHAPES, ETC. SHALL BE GROUND TO A 1/16" RADIUS.
3. THE L8 X 4 X 1/2 ANGLES SHALL BE FURNISHED AS ONE CONTINUOUS PIECE. THE 1 1/4" X 5 1/2" BARS EACH SIDE OF THE JOINT SHALL BE PROVIDED IN TWO LENGTHS AS SHOWN IN THE PLANS.
4. THREADED RODS SHALL MEET THE REQUIREMENTS OF STD SPEC SUBSECTION 714.04.
5. THE ANCHOR PLATE AND ATTACHED WELDED STUDS MAY BE SUPPLIED WITHOUT GALVANIZING OR METALIZING.
6. FABRIC TROUGH SHALL BE CONTINUOUS FOR THE FULL LENGTH OF THE JOINT.
7. A DRIP BEAD OF 1/4" X 7" STRIP OF PREFORMED MATERIAL SHALL BE CEMENTED TO THE BOTTOM OF THE FABRIC TROUGH USING AN ADHESIVE APPROVED BY THE MANUFACTURER. THE DRIP BEAD SHALL BE APPLIED 1" FROM THE DOWNSPOUT END OF THE TROUGH.
8. PROJECTING THREADS OF THE 3/4" DIA BOLTS SHALL BE GREASED BY THE CONTRACTOR PRIOR TO PLACING ADJACENT CONCRETE. THIS WILL FACILITATE FUTURE REMOVAL OF BOLTS.
9. THE FINAL EXPOSED FINISH OF THE EXPANSION JOINT SHALL BE COVERED DURING PLACEMENT OF BRIDGE DECK CONCRETE.

10. FILL COUNTERBORED HOLES WITH HOT POURED JOINT SEALER, MEETING STD SPEC SUBSECTION 707.04, AFTER BOLT INSTALLATION. PAYMENT SHALL BE INCLUDED IN THE UNIT PRICE BID FOR ITEM 516.11 "BRIDGE EXPANSION JOINT, VERMONT".
11. FABRIC THROUGH SHALL BE THOROUGHLY CLEANED AND FLUSHED AFTER PAVING OPERATIONS.
12. PAYMENT FOR PVC WATERSTOP SHALL BE INCLUDED IN THE UNIT PRICE BID FOR ITEM 501.34 "CONCRETE, HIGH PERFORMANCE CLASS B".
13. THE EXPANSION JOINT, INCLUDING THE FABRIC TROUGH, SHALL BE SHOP ASSEMBLED AND SHIPPED AS ONE UNIT.
14. TEMPORARY SHIPPING ATTACHMENTS SHALL BE ATTACHED BY BOLTING; WELDING WILL NOT BE PERMITTED.

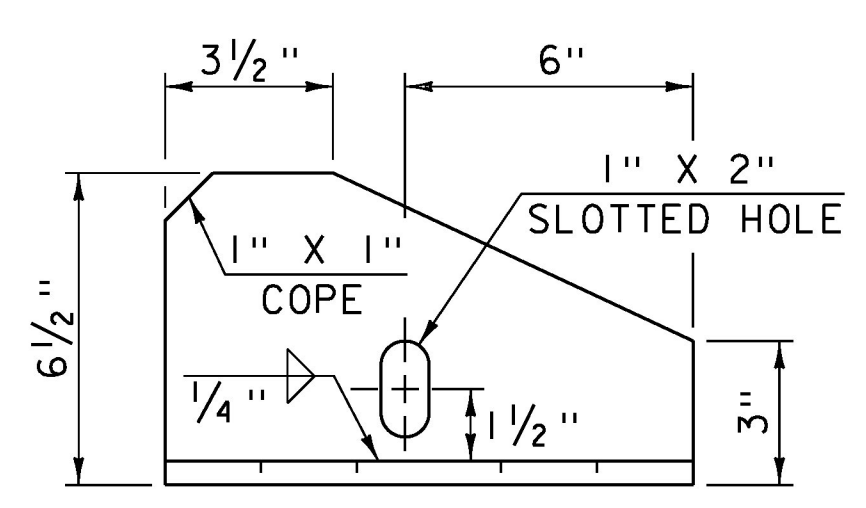
TEMP	"A" DIST
0°F	1 1/8"
15°F	1 11/16"
30°F	1 1/2"
45°F	1 5/16"
60°F	1 1/8"
75°F	1 5/16"
90°F	3/4"
105°F	9/16"

"A" IS THE SETTING BEFORE DEAD LOADS ARE IN PLACE.

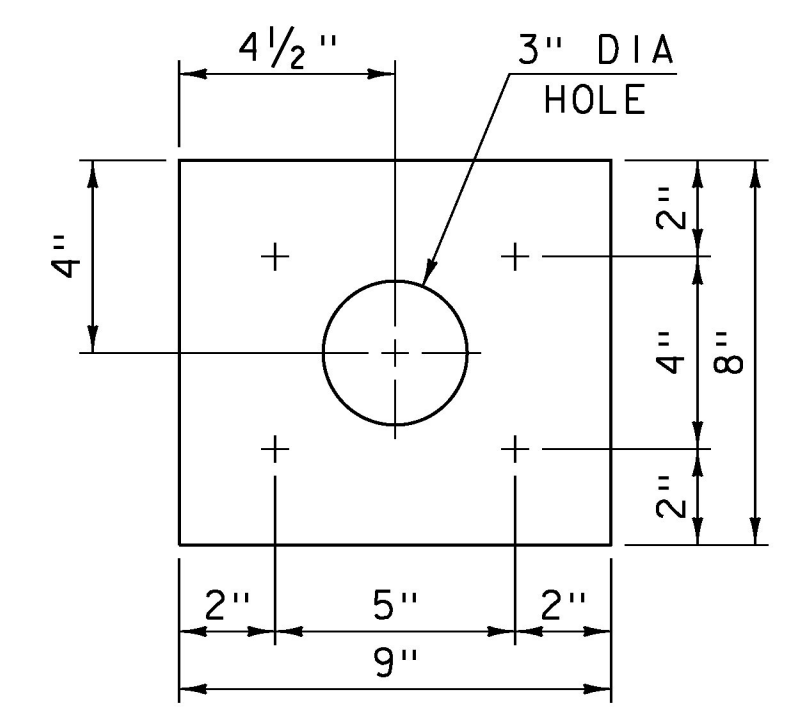
ALL PLATES 1/2"  
SCALE: 3" = 1'-0"



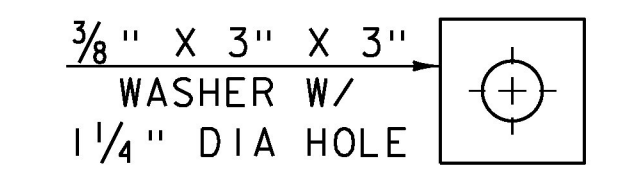
**BRACKET PLAN**



**BRACKET ELEVATION**



**ANCHOR PLATE PLAN**



**BRACKET WASHER**

PROJECT NAME:	RUTLAND CITY
PROJECT NUMBER:	BRF 3000 (16)
FILE NAME:	s94j092expj+.dgn
PROJECT LEADER:	C. CARLSON
DESIGNED BY:	M. EVANS-MONGEON
EXPANSION JOINT DETAILS	
PLOT DATE:	03-JUL-2014
DRAWN BY:	G. ROY
CHECKED BY:	M. EVANS-MONGEON
SHEET	169 OF 245