

GPS CONTROL POINTS

HVCTRL #1

JUNIOR
 NORTH = 401716.542
 EAST = 1511570.776
 ELEV. = 540.347

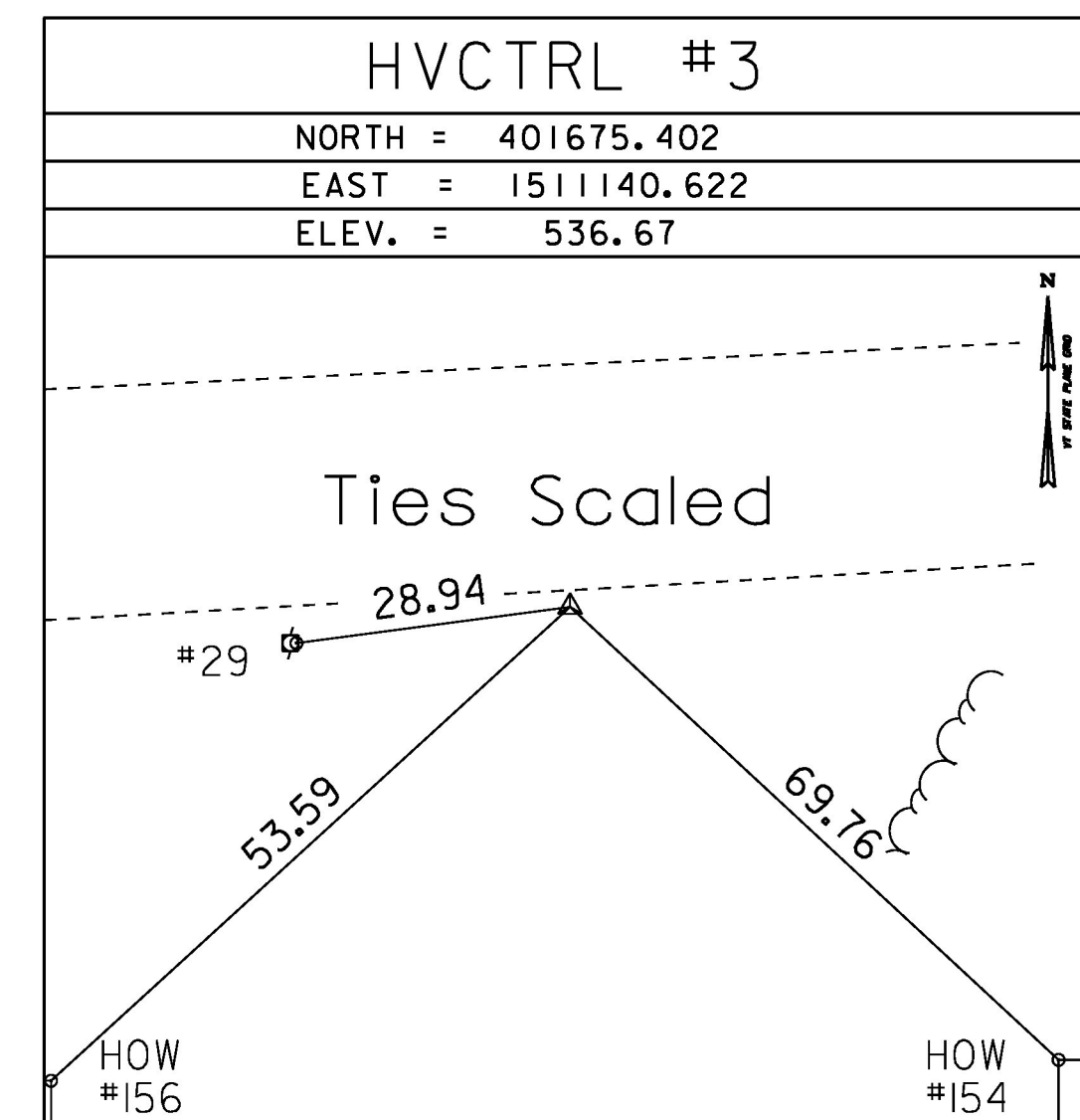
GENERAL LOCATION, RUTLAND, VT. TO REACH FROM THE INTERSECTION OF U.S.ROUTE 7 (SOUTH MAIN STREET) AND U.S.ROUTE 4 EAST (WOODSTOCK AVENUE) GO SOUTH ALONG U.S.ROUTE 7 FOR 0.5 MI (0.8 KM) TO THE INTERSECTION OF MADISON STREET RIGHT. TURN RIGHT AND GO WEST ALONG MADISON STREET FOR 0.2 MI (0.3 KM) TO THE INTERSECTION OF STRONGS AVENUE LEFT AND RIGHT AND RIVER STREET STRAIGHT. CONTINUE STRAIGHT AHEAD AND GO WEST ALONG RIVER STREET FOR 0.5 MI (0.8 KM) TO THE INTERSECTION OF MEADOW STREET AND THE SITE OF THE MARK ON THE LEFT IN THE SOUTHWEST QUADRANT OF THE INTERSECTION. IT IS IN A GRASS STRIP BETWEEN THE ROAD AND A CONCRETE SIDEWALK. THE MARK IS SET 2 CM BELOW GROUND SURFACE IN THE TOP OF A 25 CM DIAMETER CONCRETE MONUMENT. IT IS 4.2 M (13.8 FT) SOUTH OF AND ABOUT LEVEL WITH THE CENTERLINE OF RIVER STREET, 27.6 M (90.6 FT) WEST OF THE CENTERLINE OF MEADOW STREET, 15.4 M (50.5 FT) NORTHWEST OF THE NORTHEAST CORNER OF HOUSE NO.79, AND 5.8 M (19.0 FT) EAST OF POLE NO.25/133T/20 AND A FIBERGLASS WITNESS POST.

HVCTRL #2

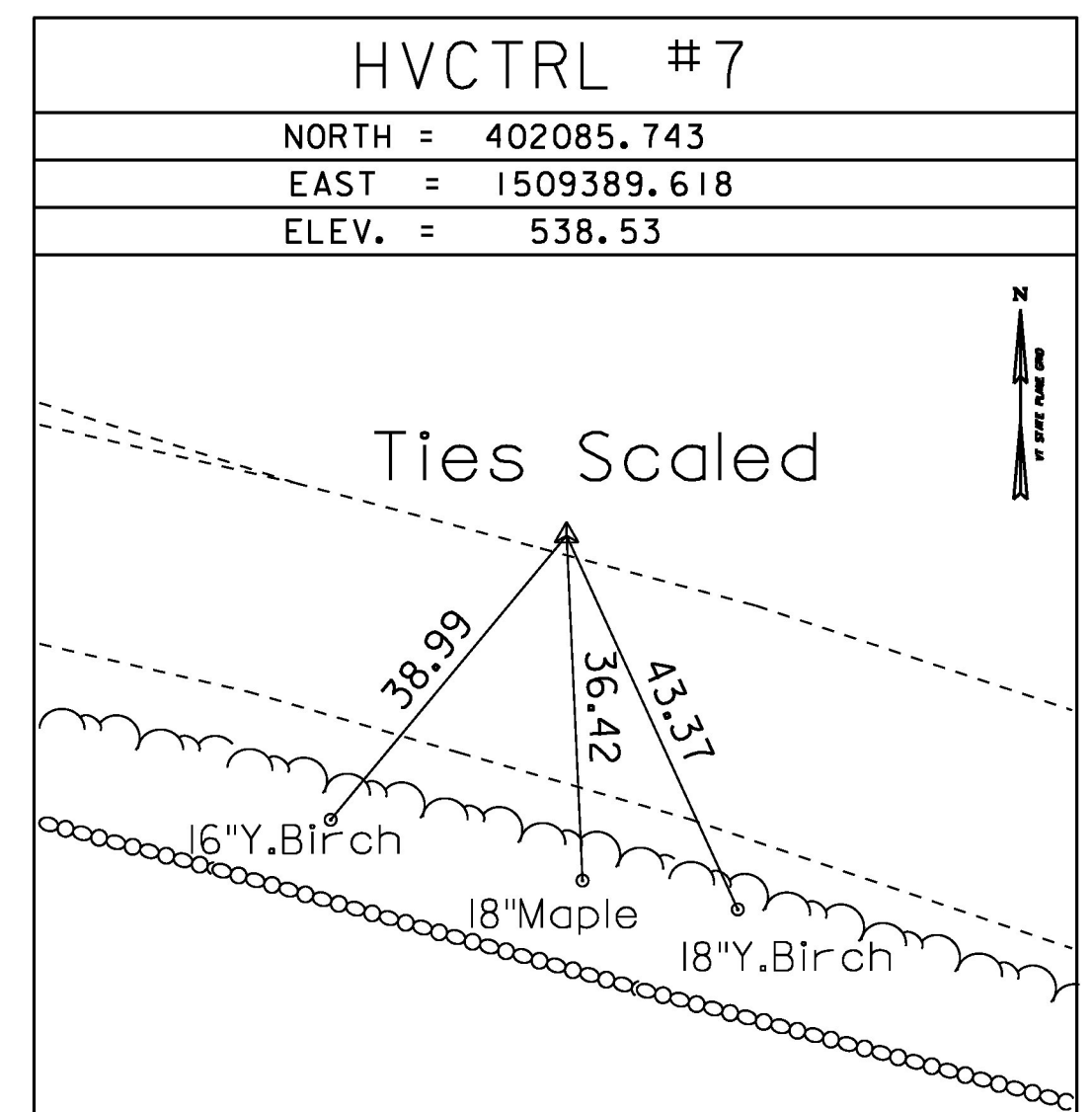
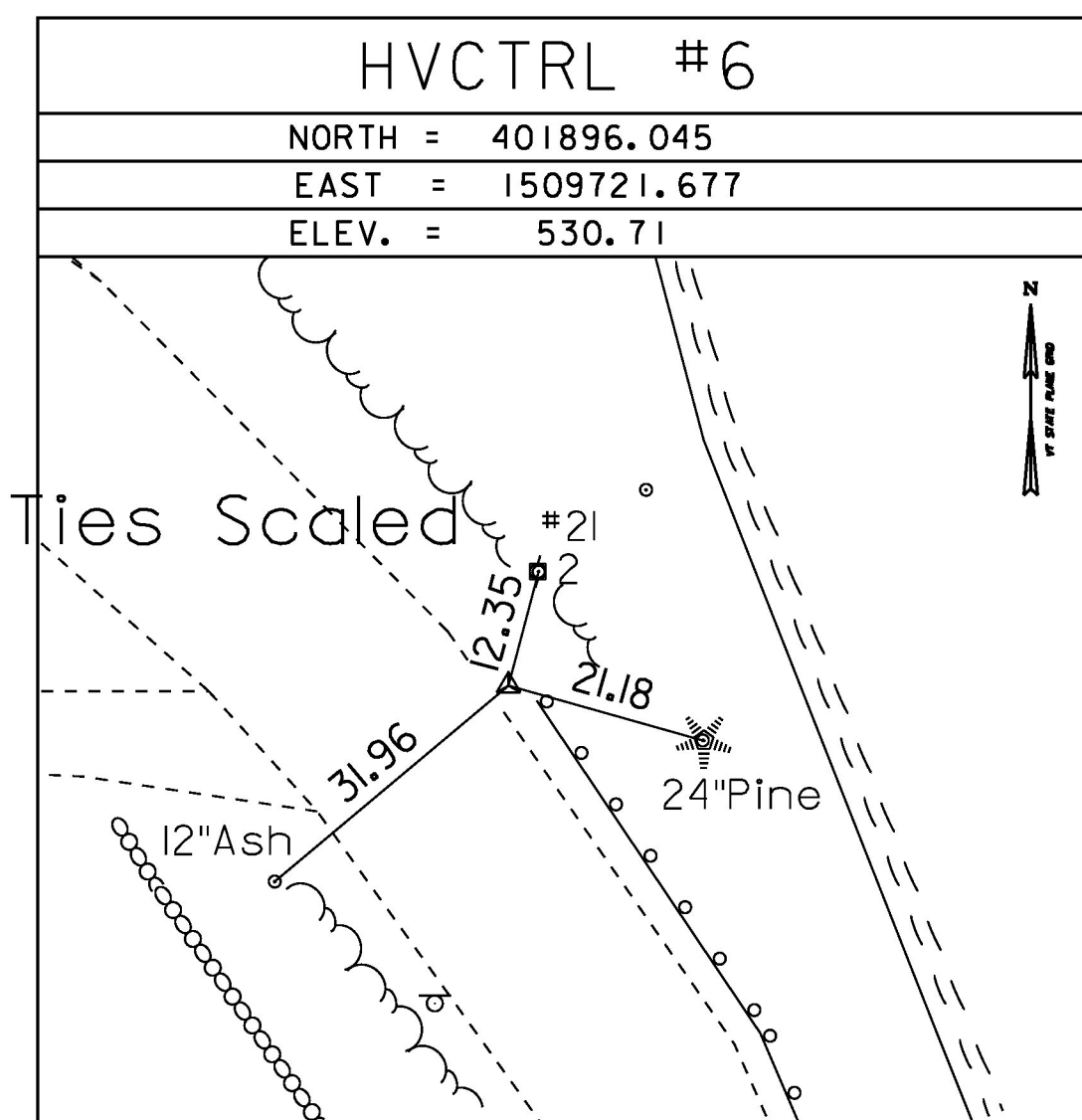
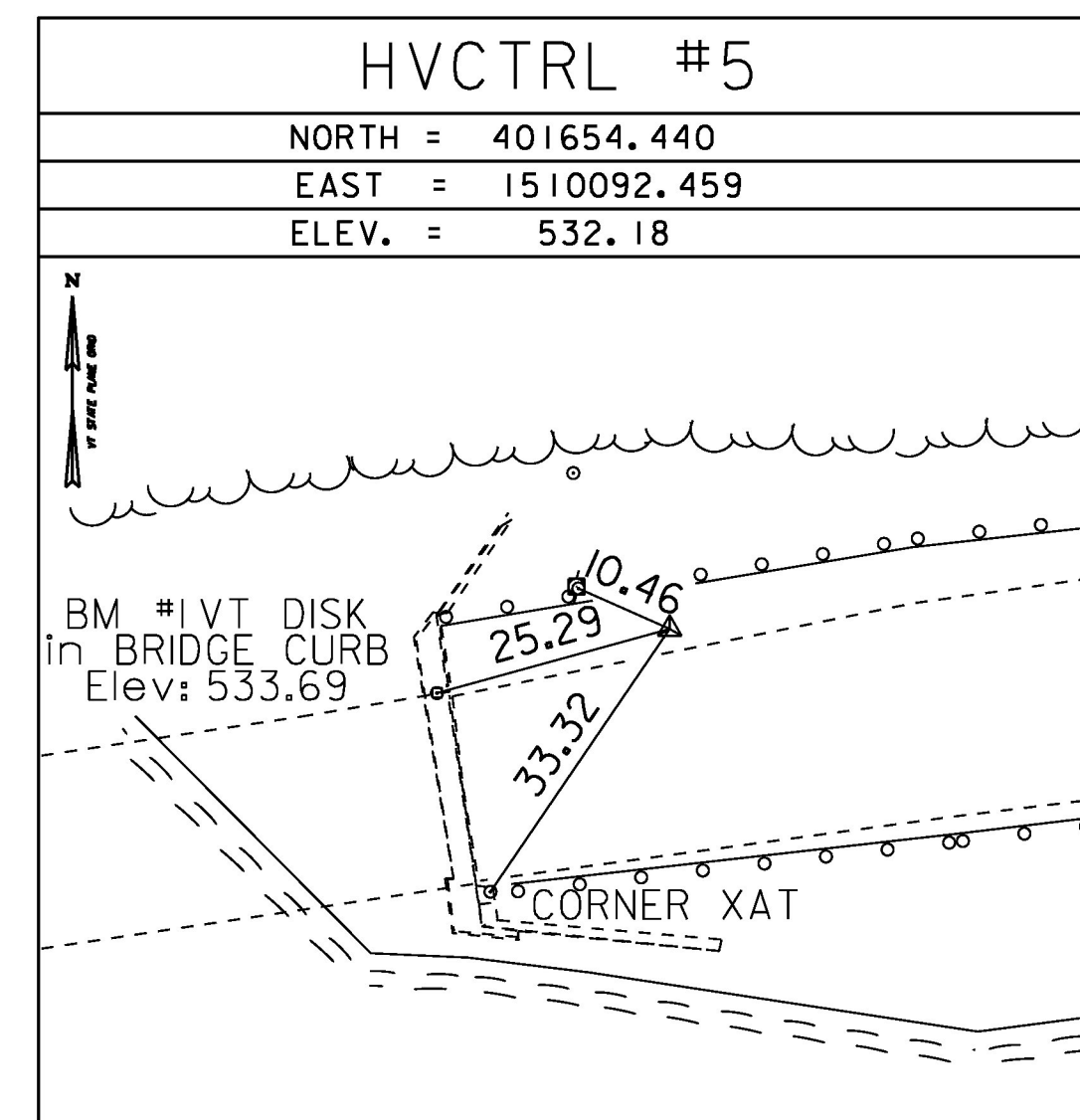
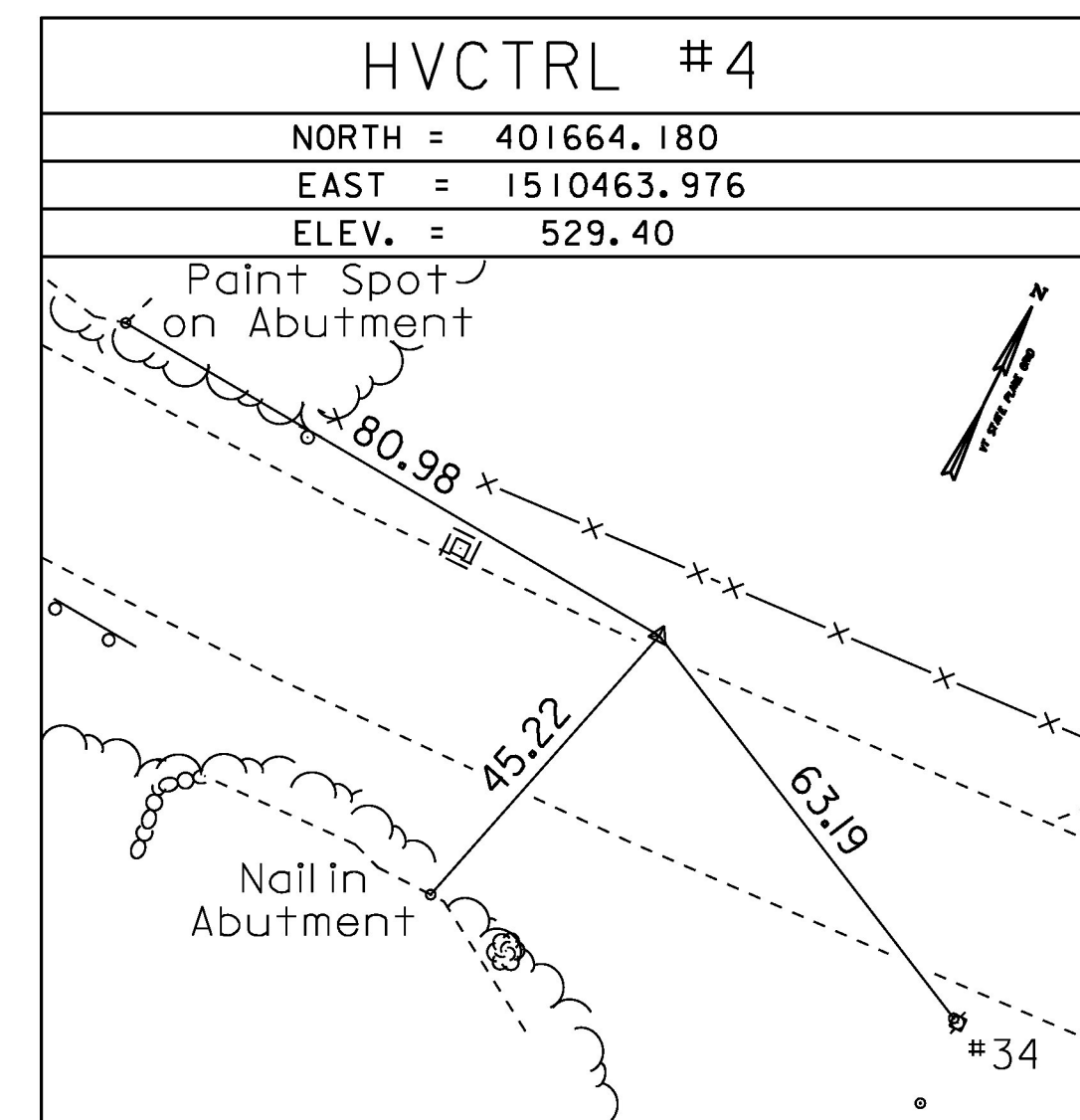
JUNIOR AZ MK
 NORTH = 401611.277
 EAST = 1509784.848
 ELEV. = 530.330

GENERAL LOCATION, RUTLAND, VT. TO REACH FROM THE INTERSECTION OF U.S.ROUTE 7 (SOUTH MAIN STREET) AND U.S.ROUTE 4 EAST (WOODSTOCK AVENUE) GO SOUTH ALONG U.S.ROUTE 7 FOR 0.5 MI (0.8 KM) TO THE INTERSECTION OF MADISON STREET RIGHT. TURN RIGHT AND GO WEST ALONG MADISON STREET FOR 0.2 MI (0.3 KM) TO THE INTERSECTION OF STRONGS AVENUE LEFT AND RIGHT AND RIVER STREET STRAIGHT. CONTINUE STRAIGHT AHEAD AND GO WEST ALONG RIVER STREET FOR 0.5 MI (0.8 KM) TO THE INTERSECTION OF MEADOW STREET. CONTINUE STRAIGHT AHEAD AND GO WEST ALONG RIVER STREET FOR 0.4 MI (0.6 KM) TO THE T- INTERSECTION OF DORR DRIVE AND THE SITE OF THE MARK STRAIGHT AHEAD. THE MARK IS SET 5 CM BELOW GROUND SURFACE IN THE TOP OF A 25 CM DIAMETER CONCRETE MONUMENT. IT IS 7.2 M (23.6 FT) NORTH NORTHWEST OF AND ABOUT LEVEL WITH THE CENTERLINE INTERSECTION OF RIVER STREET AND DORR DRIVE, 20.4 M (66.9 FT) NORTHWEST OF A POLE, 24.7 M (81.0 FT) SOUTH OF POLE NO.37, AND 0.6 M (2.0 FT) EAST NORTHEAST OF POLE NO.133T/32 AND A FIBERGLASS WITNESS POST.

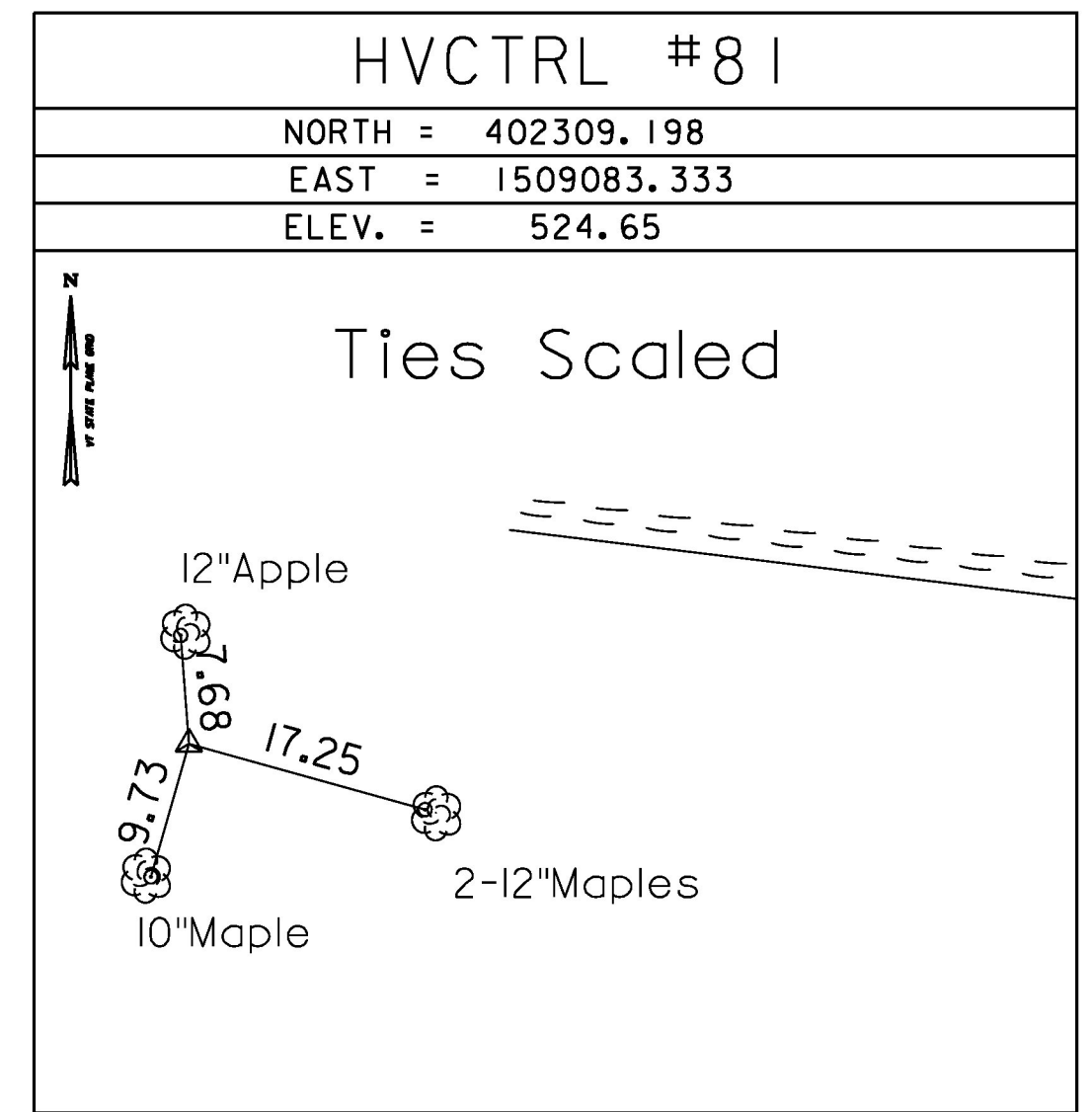
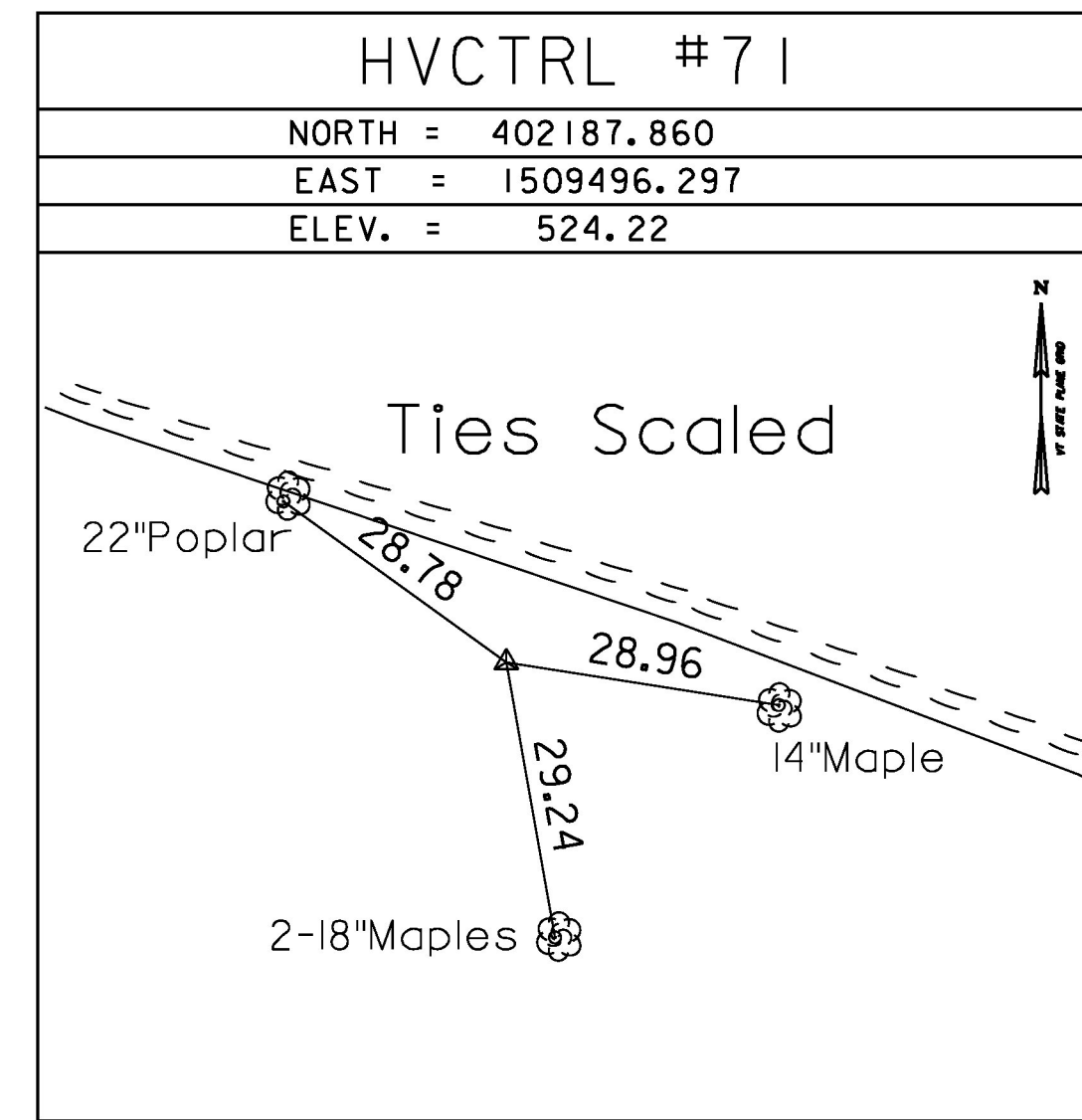
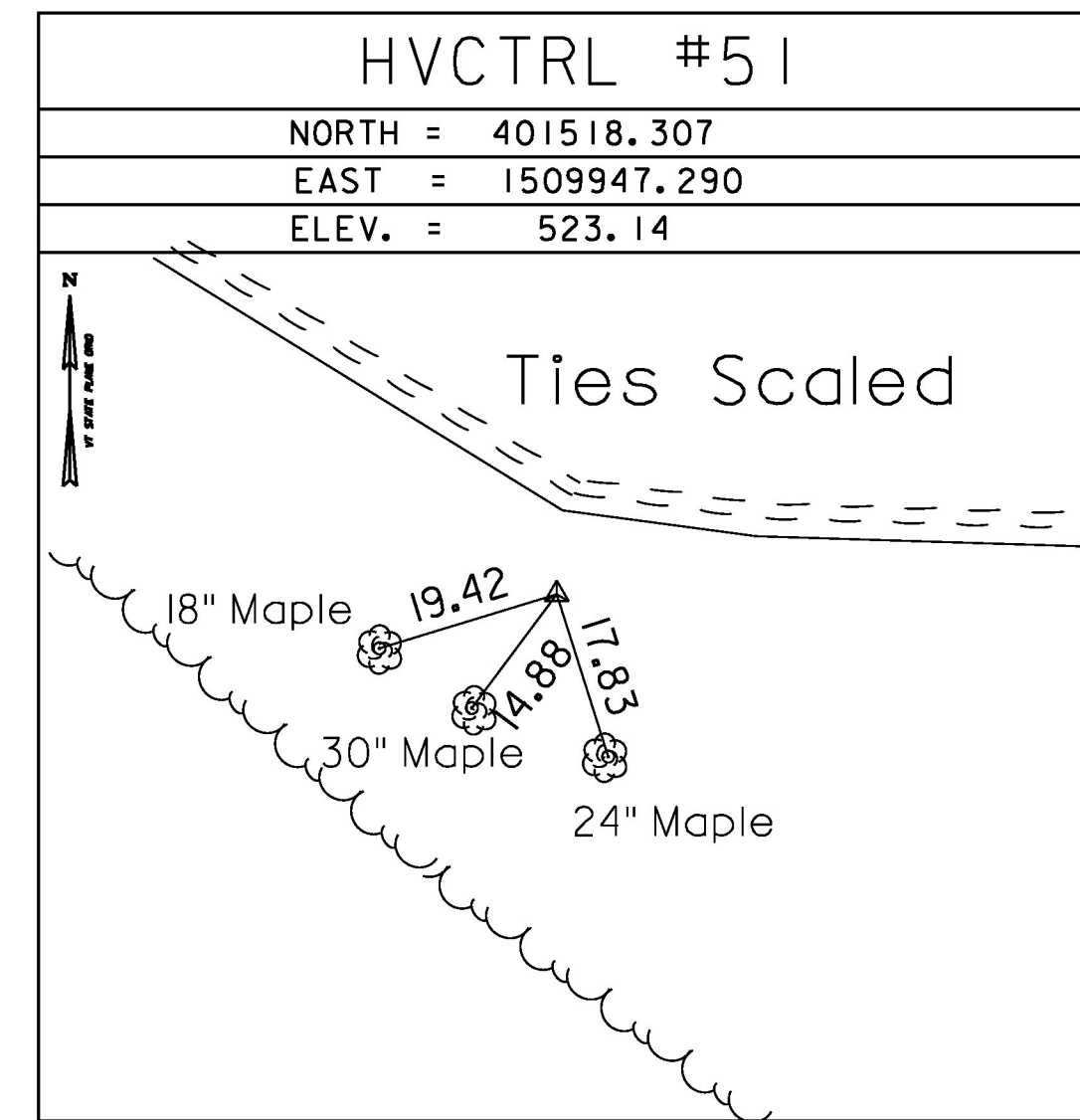
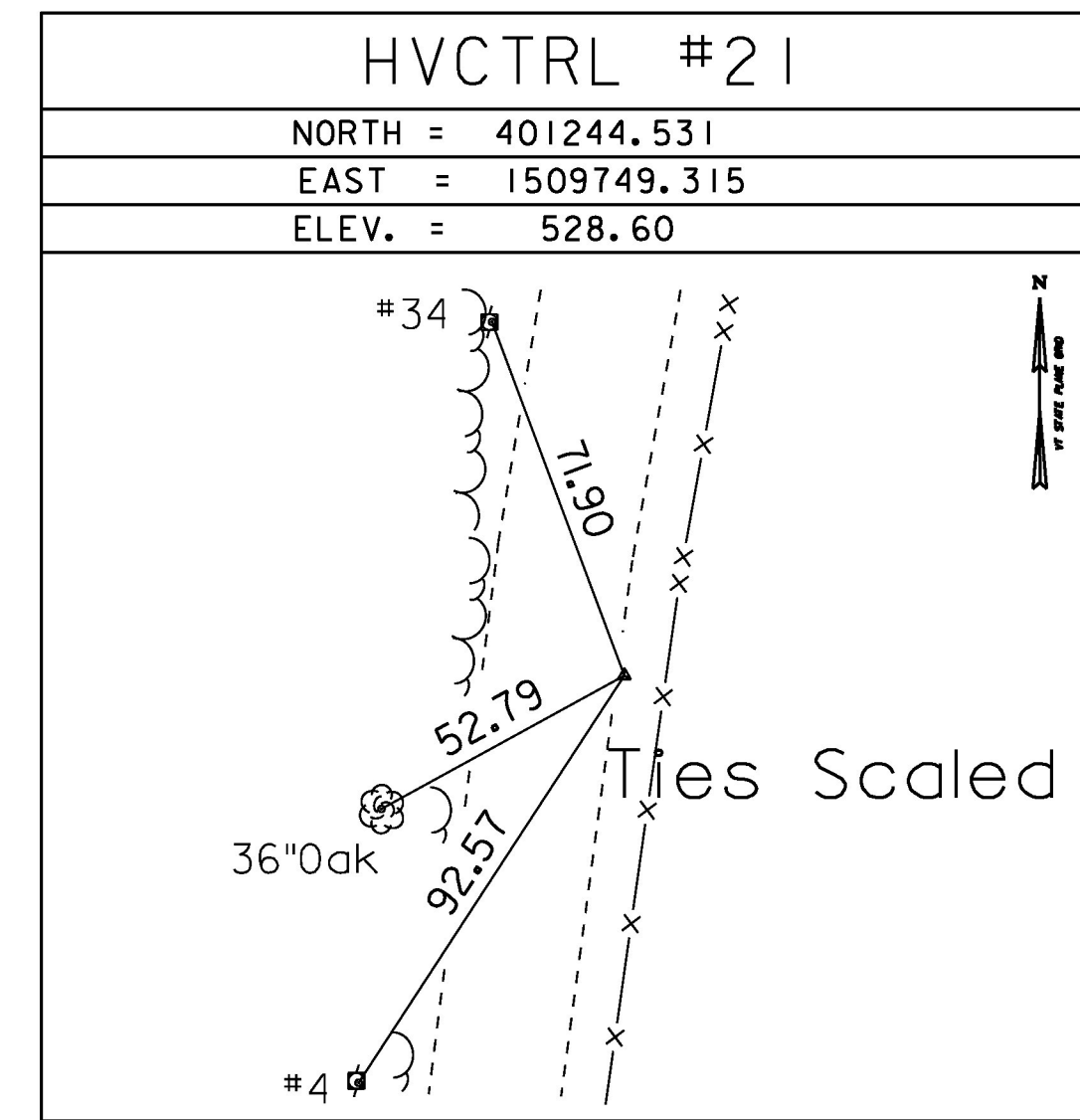
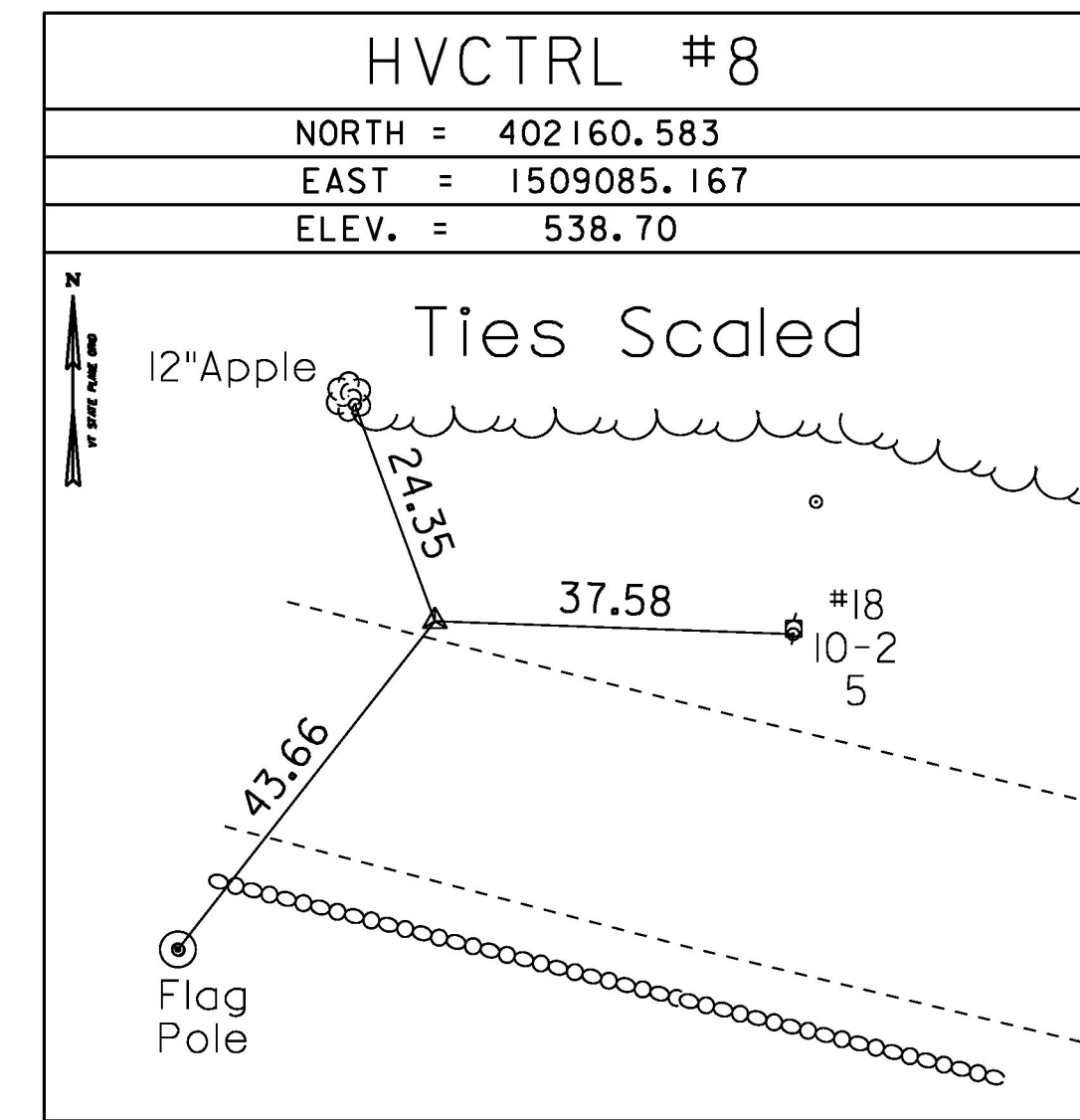
TRAVERSE TIES



* Main Traverse Completed 11/16/98 by Dubois & King



TRAVERSE TIES



Traverse Points 4 & 5 were physically located in the field

DATUM	
VERTICAL	NAVD 88
HORIZONTAL	NAD 83(92)
ADJUSTMENT	Least Sq.

PROJECT NAME:	RUTLAND CITY
PROJECT NUMBER:	BRF 3000 (16)
FILE NAME:	s94j092+1e.dgn
DESIGNED BY:	M.EVANS-MONGEON
TIE SHEET	
PLOT DATE:	03-JUL-2014
DRAWN BY:	R.BULLOCK
CHECKED BY:	U.STANLEY
SHEET	132 OF 245