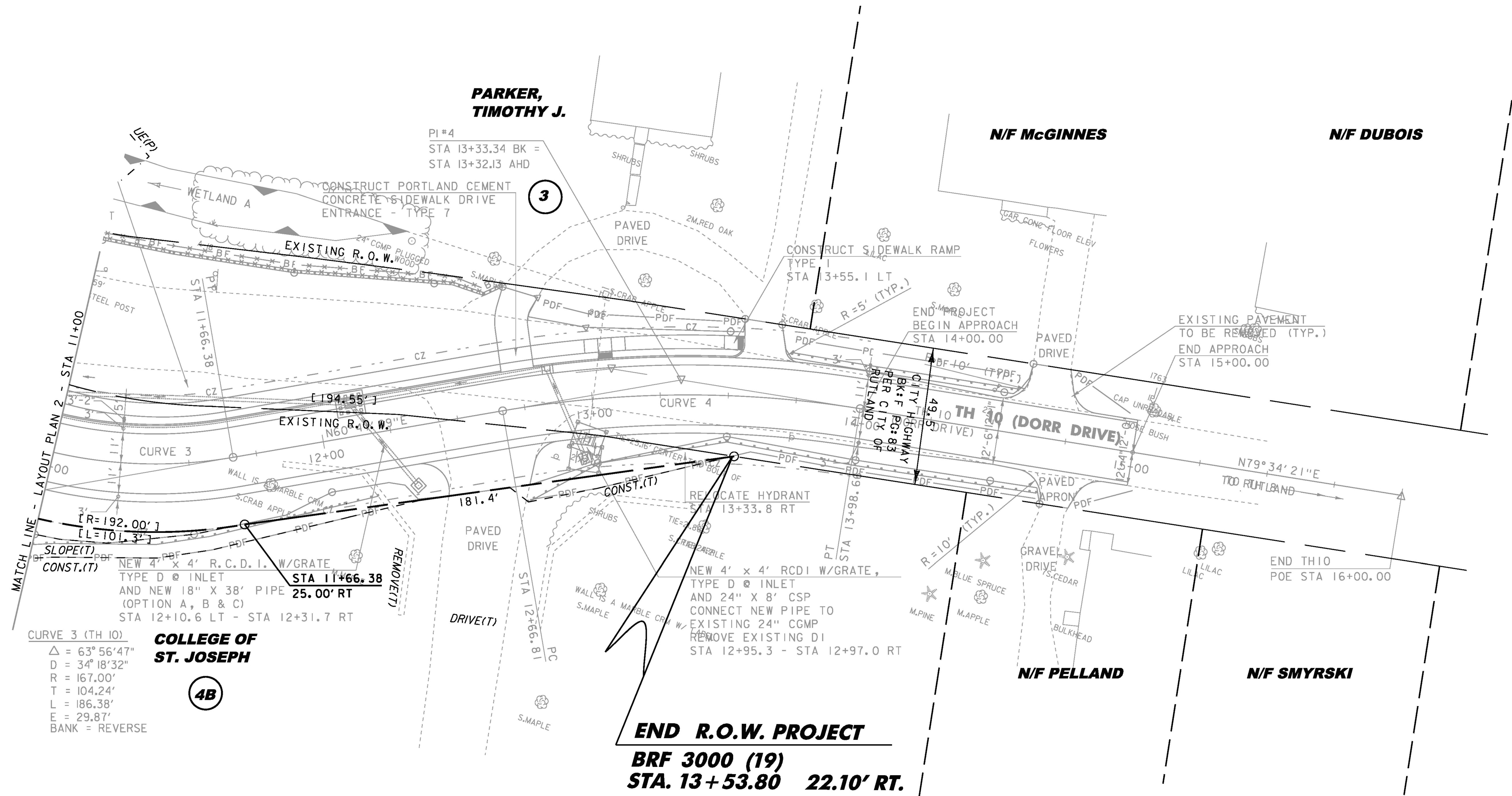


REMOVE EXISTING PAVEMENT
TH IO STA 14+72.9 TO STA 14+77.1 LT (10.9 SY)

CONSTRUCT DRIVE
TH IO STA 12+53.2 RT PAVED, 27.5' WIDE
TH IO STA 12+74.5 LT PAVED, 12.0' WIDE
TH IO STA 13+61.2 LT PAVED, 13.6' WIDE
TH IO STA 14+65.9 LT PAVED, 13.9' WIDE
TH IO STA 14+74.4 RTPAVED, 10.5' WIDE

CONSTRUCT SIDEWALK RAMP
TH IO STA 13+55.1 LT - TYPE 1

CONSTRUCT PORTLAND CEMENT
CONCRETE SIDEWALK DRIVE ENTRANCE
TH IO STA 12+74.5 LT - TYPE 7



CURVE 3 (TH 10)
 $\Delta = 63^\circ 56' 47''$
 $D = 34^\circ 18' 32''$
 $R = 167.00'$
 $T = 104.24'$
 $L = 186.38'$
 $E = 29.87'$
 BANK = REVERSE

COLLEGE OF ST. JOSEPH
4B
 NEW 4' x 4' R.C.D.I. W/GRATE
 TYPE D INLET
 AND NEW 18" x 38' PIPE
 (OPTION A, B & C)
 STA 12+10.6 LT - STA 12+31.7 RT

END R.O.W. PROJECT
BRF 3000 (19)
STA. 13+53.80 22.10' RT.

605.10 6 INCH UNDERDRAIN
 STA 11+00.0 TO STA 12+05.0 LT (99.6 LF)
 605.20 6 INCH UNDERDRAIN CARRIER PIPE
 STA 12+05.0 LT (X LF)
 605.95 UNDERDRAIN FLUSHING BASIN
 STA 12+05.0 LT (1EA)

613.10 STONE FILL, TYPE 1
 TH IO STA 11+90.2 LT (0.7 CY)
 616.21 VERTICAL GRANITE CURB
 TH IO STA 11+00.0 - STA 12+66.0 LT (163.1 LF)
 TH IO STA 12+82.9 - STA 13+54.7 LT (78.4 LF)
 618.10 PORTLAND CEMENT CONCRETE SIDEWALK, 5 INCH
 TH IO STA 11+00.0 - STA 13+54.7 LT (139.7 SY)
 618.30 DETECTABLE WARNING SURFACE
 TH IO STA 13+54.7 LT (10.0 SF)
 621.80 REMOVAL AND DISPOSAL OF GUARDRAIL
 TH IO STA 11+00.0 - STA 11+07.4 LT (4.4 LF)

629.24 DUCTILE IRON PIPE, CEMENT-LINED
 TH IO STA 13+33.8 RT (5.0 LF)
 629.29 RELOCATE HYDRANT
 TH IO STA 13+33.8 RT (1EA)
 679.25 REMOVING AND RESETTING LIGHT POLE
 TH IO STA 12+32.4 RT (1EA)
 TH IO STA 13+16.0 RT (1EA)

LINE SHOWN ON THIS PLAN AS EXISTING
 PROPERTY LINES P/L ARE BELIEVED TO
 BE ACCURATE BUT SHOULD NOT BE RELIED
 UPON FOR PURPOSES UNRELATED TO THE
 CITY OF RUTLAND'S ACQUISITION OF LAND
 AND RIGHTS FOR THIS PROJECT.

DATUM
 VERTICAL NAVD 88
 HORIZONTAL NAD 83 (92)

SCALE 1" = 20'-0"

08J096
 PROJECT NAME: RUTLAND CITY
 PROJECT NUMBER: BRF 3000 (19)
 FILE NAME: Layout 3
 PROJECT LEADER: M. SARGENT
 DESIGNED BY: C. HARDIN
 PLOT DATE: 30-MAY-2014
 DRAWN BY: C. HARDIN
 CHECKED BY: D. GOZALKOWSKI
 ROW SHEET 120 OF 245