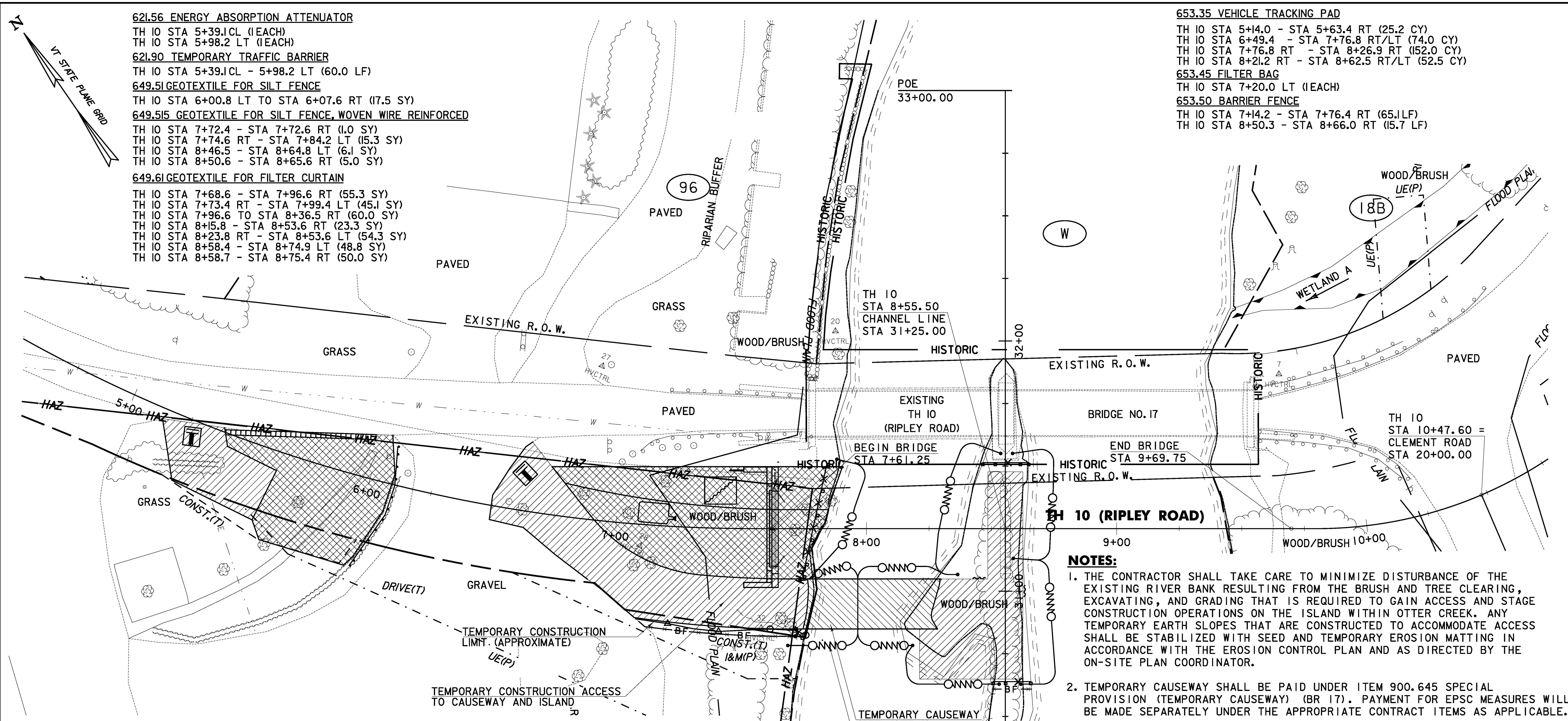


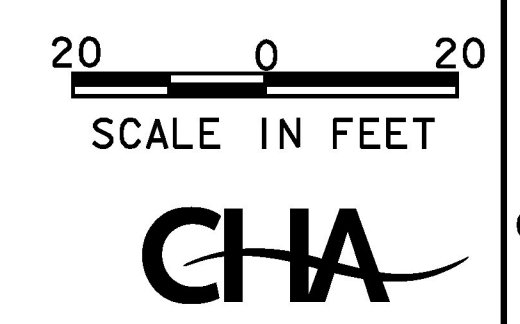
- 621.56 ENERGY ABSORPTION ATTENUATOR**
 TH 10 STA 5+39.1 CL (1 EACH)
 TH 10 STA 5+98.2 LT (1 EACH)
- 621.90 TEMPORARY TRAFFIC BARRIER**
 TH 10 STA 5+39.1 CL - 5+98.2 LT (60.0 LF)
- 649.51 GEOTEXTILE FOR SILT FENCE**
 TH 10 STA 6+00.8 LT TO STA 6+07.6 RT (17.5 SY)
- 649.515 GEOTEXTILE FOR SILT FENCE, WOVEN WIRE REINFORCED**
 TH 10 STA 7+72.4 - STA 7+72.6 RT (1.0 SY)
 TH 10 STA 7+74.6 RT - STA 7+84.2 LT (15.3 SY)
 TH 10 STA 8+46.5 - STA 8+64.8 LT (6.1 SY)
 TH 10 STA 8+50.6 - STA 8+65.6 RT (5.0 SY)
- 649.61 GEOTEXTILE FOR FILTER CURTAIN**
 TH 10 STA 7+68.6 - STA 7+96.6 RT (55.3 SY)
 TH 10 STA 7+73.4 RT - STA 7+99.4 LT (45.1 SY)
 TH 10 STA 7+96.6 TO STA 8+36.5 RT (60.0 SY)
 TH 10 STA 8+15.8 - STA 8+53.6 RT (23.3 SY)
 TH 10 STA 8+23.8 RT - STA 8+53.6 LT (54.3 SY)
 TH 10 STA 8+58.4 - STA 8+74.9 LT (48.8 SY)
 TH 10 STA 8+58.7 - STA 8+75.4 RT (50.0 SY)

- 653.35 VEHICLE TRACKING PAD**
 TH 10 STA 5+44.0 - STA 5+63.4 RT (25.2 CY)
 TH 10 STA 6+49.4 - STA 7+76.8 RT/LT (74.0 CY)
 TH 10 STA 7+76.8 RT - STA 8+26.9 RT (152.0 CY)
 TH 10 STA 8+21.2 RT - STA 8+62.5 RT/LT (52.5 CY)
- 653.45 FILTER BAG**
 TH 10 STA 7+20.0 LT (1 EACH)
- 653.50 BARRIER FENCE**
 TH 10 STA 7+14.2 - STA 7+76.4 RT (65.1 LF)
 TH 10 STA 8+50.3 - STA 8+66.0 RT (15.7 LF)



- NOTES:**
1. THE CONTRACTOR SHALL TAKE CARE TO MINIMIZE DISTURBANCE OF THE EXISTING RIVER BANK RESULTING FROM THE BRUSH AND TREE CLEARING, EXCAVATING, AND GRADING THAT IS REQUIRED TO GAIN ACCESS AND STAGE CONSTRUCTION OPERATIONS ON THE ISLAND WITHIN OTTER CREEK. ANY TEMPORARY EARTH SLOPES THAT ARE CONSTRUCTED TO ACCOMMODATE ACCESS SHALL BE STABILIZED WITH SEED AND TEMPORARY EROSION MATTING IN ACCORDANCE WITH THE EROSION CONTROL PLAN AND AS DIRECTED BY THE ON-SITE PLAN COORDINATOR.
 2. TEMPORARY CAUSEWAY SHALL BE PAID UNDER ITEM 900.645 SPECIAL PROVISION (TEMPORARY CAUSEWAY) (BR 17). PAYMENT FOR EPSC MEASURES WILL BE MADE SEPARATELY UNDER THE APPROPRIATE CONTRACT ITEMS AS APPLICABLE.
 3. IT IS ANTICIPATED THAT THE TEMPORARY CAUSEWAY WILL INCORPORATE DRAINAGE PIPE, OR OTHER SIMILAR FEATURES, TO MAINTAIN FLOW THROUGH THE WEST CHANNEL OF OTTER CREEK WHILE IN SERVICE. IT IS FURTHER ANTICIPATED THAT THE TEMPORARY CAUSEWAY WILL BE INSTALLED AND REMOVED IN PHASES. EACH PHASE SHALL BE ENTIRELY PROTECTED BY FILTER CURTAIN, AS SHOWN, TO MINIMIZE STREAM BED DISTURBANCE DURING CAUSEWAY INSTALLATION AND REMOVAL. FILTER CURTAIN SHALL BE DESIGNED TO FUNCTION UNDER THE HYDRAULIC REQUIREMENTS OF OTTER CREEK, SHOWN ON SHEET 19.
 4. AREAS SHOWN AS VEHICLE TRACKING PAD SHALL BE CONSTRUCTED TO THE SPECIFICATIONS OF STABILIZED CONSTRUCTION ENTRANCE (SHEET 114) AND PAID UNDER ITEM 653.35 VEHICLE TRACKING PAD.
 5. TEMPORARY TRAFFIC BARRIER SHALL BE PROVIDED BETWEEN TH 10 (RIPLEY ROAD) AND CONTRACTOR STAGING AREAS WHERE EQUIPMENT OR MATERIALS ARE BEING STORED WITHIN THE ROADSIDE CLEAR ZONE (14.0' FROM EDGE OF LANE). ENERGY ABSORPTION ATTENUATOR SHALL BE PROVIDED AT THE END OF TEMPORARY TRAFFIC BARRIER THAT IS LOCATED WITHIN THE CLEAR ZONE.

LEGEND			
(XXX)	SOIL MAP UNIT TYPE (SEE SHEET 99 FOR DETAILS)	[Hatched Box]	APPROXIMATE CONTRACTOR STAGING AREA
---	SOIL MAP UNIT BOUNDARY	[T Symbol]	STABILIZED CONSTRUCTION ENTRANCE
--- HAZ ---	HAZARDOUS MATERIAL AREA	[Slope Symbol]	SURFACE ROUGHENING
--- HISTORIC ---	HISTORIC RESOURCE AREA	[Bag Symbol]	FILTER BAG
[Barrier Symbol]	TEMPORARY TRAFFIC BARRIER	[Riparian Symbol]	RIPARIAN BUFFER
[Silt Fence Symbol]	SILT FENCE (WOVEN WIRE REINFORCED)	[Flood Line Symbol]	Q ₁₀₀ FLOODPLAIN BOUNDARY
[Filter Curtain Symbol]	FILTER CURTAIN	[Contour Symbol]	EXISTING MAJOR CONTOUR (10' INTERVAL)
[Barrier Fence Symbol]	BARRIER FENCE	[Contour Symbol]	EXISTING MINOR CONTOUR (2' INTERVAL)
[Tracking Pad Symbol]	VEHICLE TRACKING PAD	[Cofferdam Symbol]	COFFERDAM
[Causeway Symbol]	TEMPORARY CAUSEWAY		



EROSION CONTROL TEMPORARY CONSTRUCTION SITE PLAN	PROJECT NAME: RUTLAND CITY	PLOT DATE: 6/30/2014
	PROJECT NUMBER: BR 3000 (19)	DRAWN BY: C.R.H.
	PROJECT LEADER: M.D.S.	CHECKED BY: D.E.G.
	DWG. NO.: EROTEMPCONSTR	SHEET 105 OF 245

FILE NAME = W:\P\c\erose\1\NY\K2\2015\CADD\MSTN\08\096\ecmsul\antis\z08\096\erose\erose\erose.dgn
 DATE/TIME = 6/30/2014 10:41:15 AM
 USER = 4916