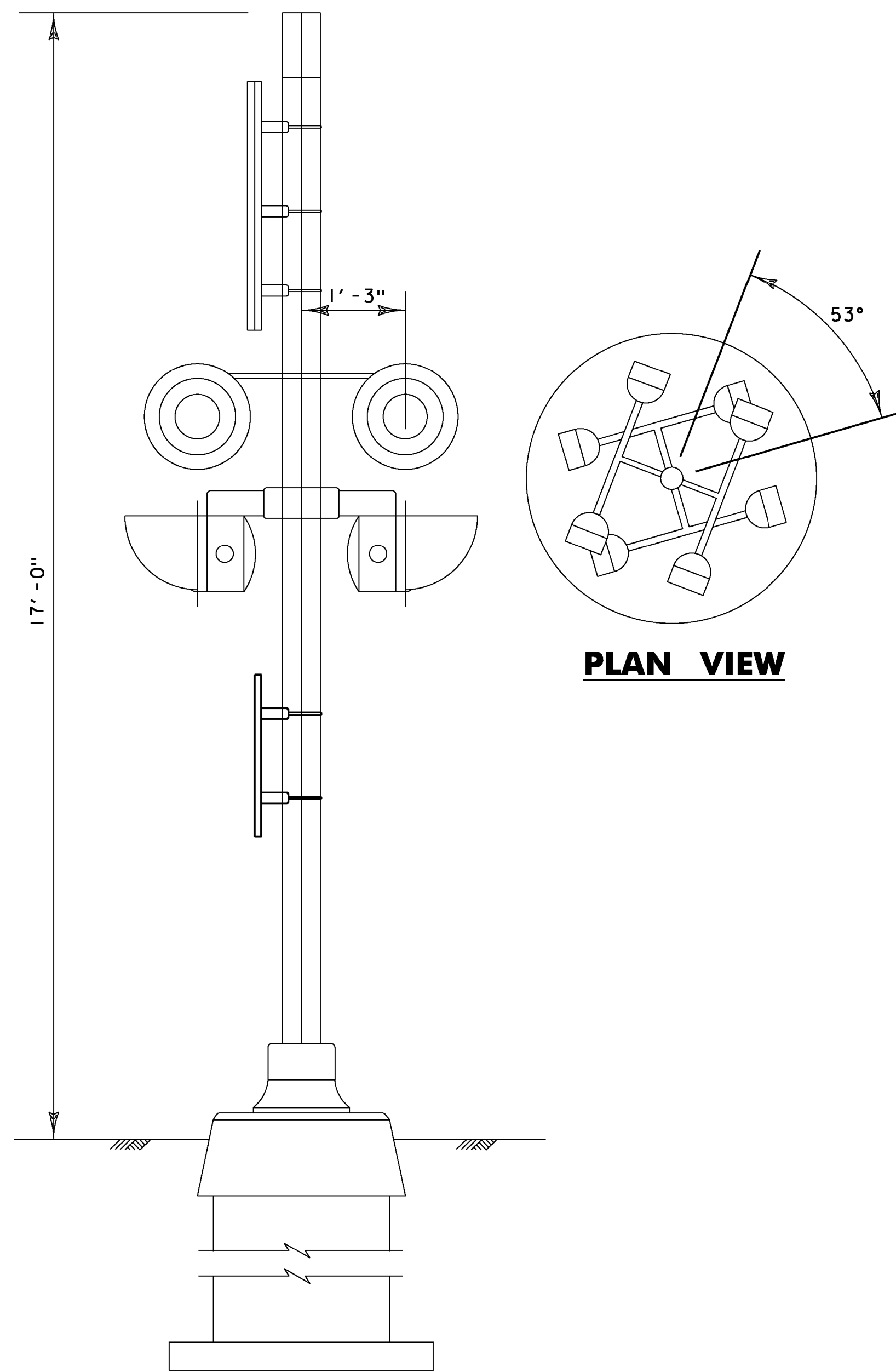


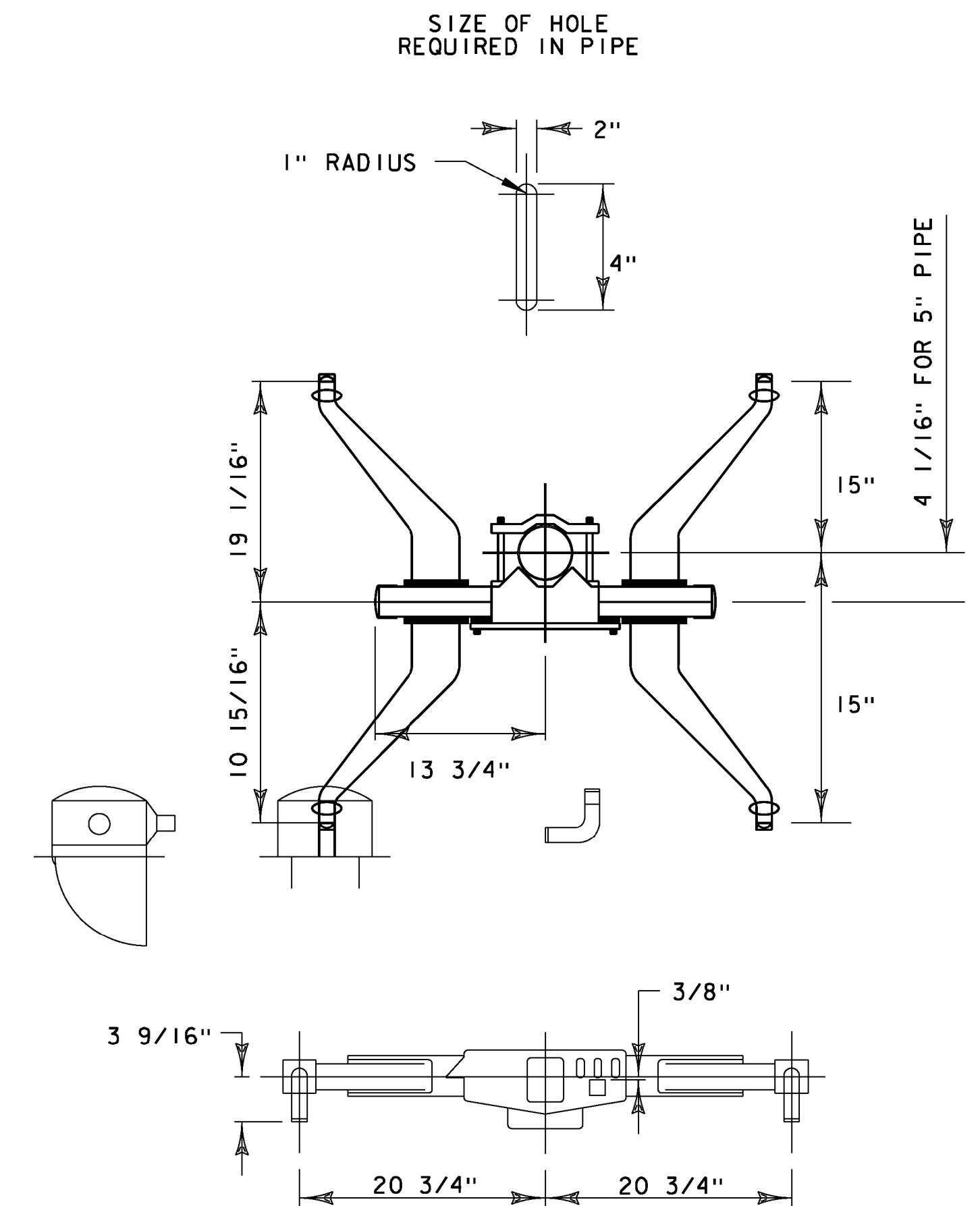
ROADWAY VIEW

SIGNAL ASSEMBLY G-1

NOT TO SCALE



SIDE VIEW



TYPICAL LAMP CROSSARM WITH BRACKETS

NOT TO SCALE

NOTES:

1. A STRIP OF ASTM D 4956 TYPE III OR TYPE V RETROREFLECTIVE WHITE MATERIAL NOT LESS THAN 2 INCHES IN WIDTH, SHALL BE USED ON EACH SUPPORT AT HIGHWAY-RAIL GRADE CROSSING FOR THE FULL LENGTH OF THE FRONT AND BACK OF THE SUPPORT FROM THE CROSSBUCK SIGN TO NEAR GROUND LEVEL.

PROJECT NAME: PITTSFORD
PROJECT NUMBER: STP 2033(21)

FILE NAME: ...13 signal assembly details.dgn PLOT DATE: 5/21/2013
PROJECT LEADER: G. EDWARDS DRAWN BY: DKG
DESIGNED BY: STANTEC CHECKED BY: KJR
SIGNAL ASSEMBLY DETAILS 1 SHEET 19 OF 21

