

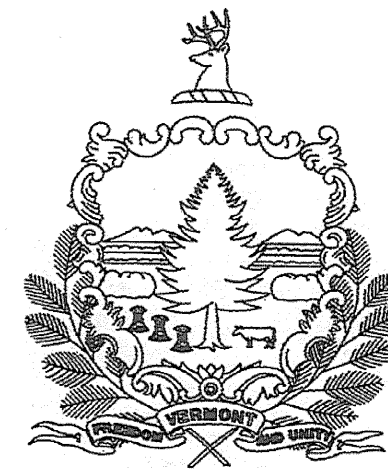
**INDEX OF SHEETS**

- 1 TITLE SHEET
- 2 PROJECT NOTES & PROJECT PLAN
- 3 QUANTITY SHEET
- 4 STEEL REPAIR SHEET
- 5 BRIDGE DETAILS SHEET
- 6 TRAFFIC SIGN SUMMARY SHEET

**VAOT STANDARD SHEETS**

- E - 100A SIDE ROAD CONSTRUCTION APPROACH SIGNS - 1/02/04
- E - 102 CONSTRUCTION SIGN DETAILS - 6/30/03
- E - 102A CONSTRUCTION SIGN DETAILS - 5/01/04
- E - 107 DELINEATION, BARRICADES AND DETOURS - 6/30/03
- E - 107A BREAKAWAY BARRICADE DETAILS - 8/08/95
- E - 121 STANDARD SIGN PLACEMENT-CONVENTIONAL ROAD - 8/08/95
- E - 155 WARNING SIGN DETAILS - 5/01/04
- E - 160 FLANGED CHANNEL STEEL SIGN POST - 5/20/99

**STATE OF VERMONT  
AGENCY OF TRANSPORTATION**



**PROPOSED IMPROVEMENT  
BRIDGE PROJECT**

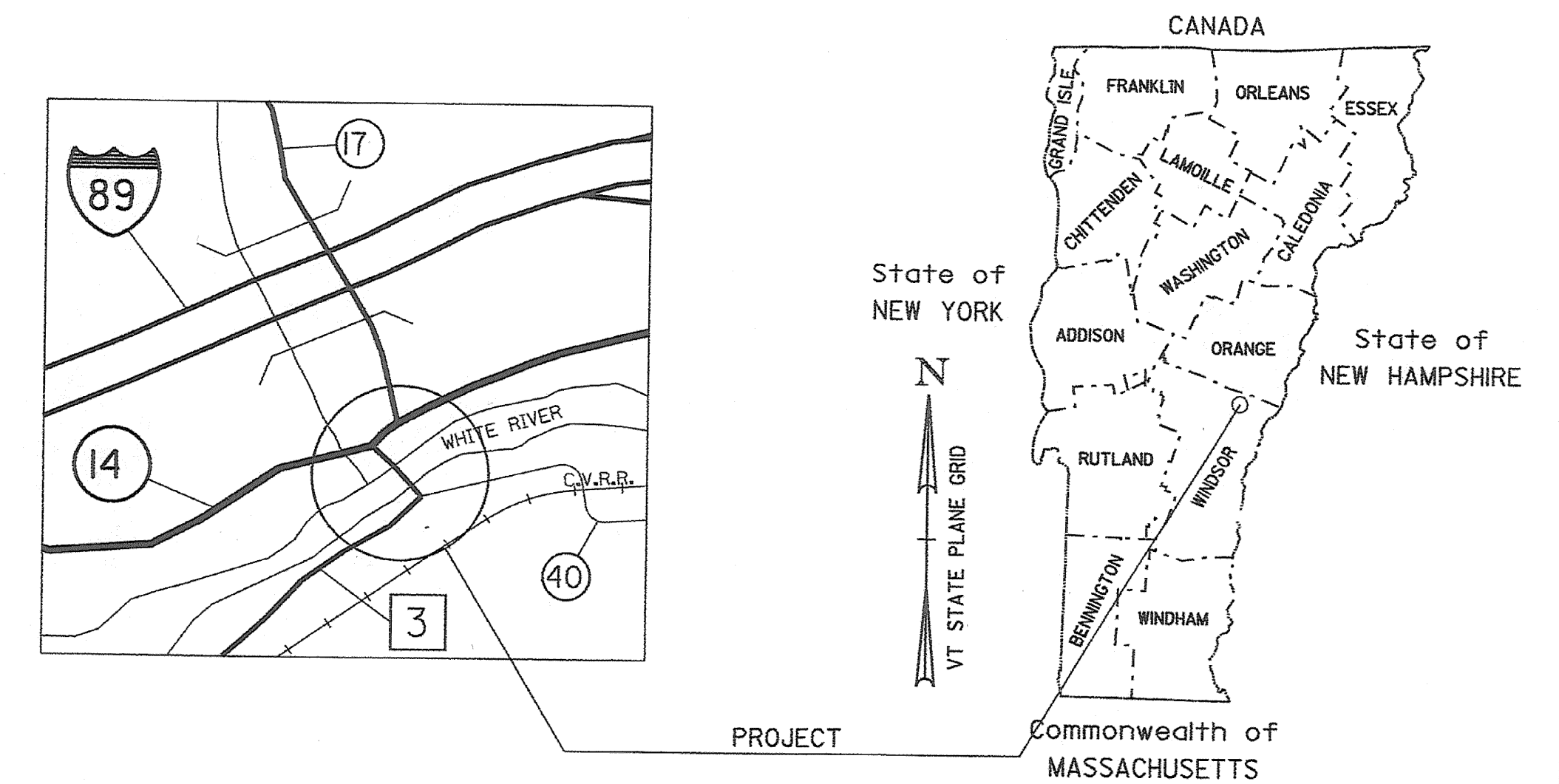
TOWN OF SHARON  
COUNTY OF WINDSOR

T.H. 3 (FAS 177) (CLASS 2 LOCAL ROAD) BRIDGE NO. 15

PROJECT LOCATION: BEGINNING AT A POINT ON T.H. 3, APPROXIMATELY 0.011 MILES SOUTH OF ITS INTERSECTION WITH VT. 14 AND PROCEEDING IN A SOUTHERLY DIRECTION 0.061 MILES.

PROJECT DESCRIPTION: REPAINTING STEEL TRUSS SUPERSTRUCTURE & OTHER MISCELLANEOUS WORK.

LENGTH OF STRUCTURE: 321.25 FEET  
LENGTH OF PROJECT: 321.25 FEET

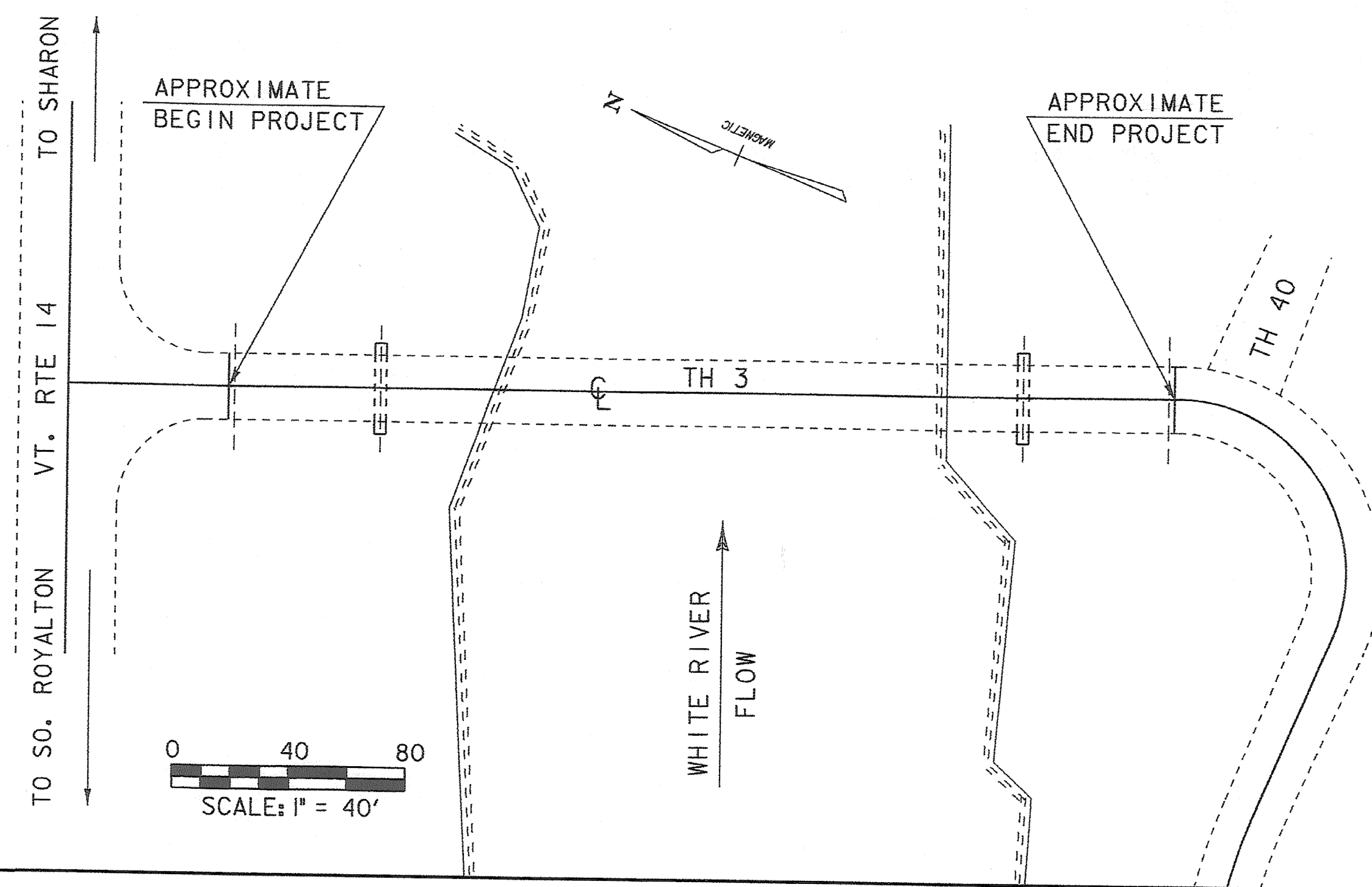


RECORD PLANS	
CONTRACTOR:	ABHE & SVOBODA, INC. - PRIOR LAKE MN.
RESIDENT ENGINEER:	TOM CHASE
CONSTRUCTION BEGAN:	OCTOBER 10, 2008
CONSTRUCTION COMPLETE:	SEPTEMBER 4, 2009
RECORD PLANS BY:	TOM CHASE
I HEREBY CERTIFY THAT ALL THE CONSTRUCTION REQUIRED BY THIS SET OF DRAWINGS HAS BEEN ACCOMPLISHED AS INDICATED HEREIN.	
BY:	<i>Thomas A. Chase</i> RESIDENT ENGINEER
DATE:	10/29/09
NOTE: Any further information concerning final quantities, amounts or other details relative to this project may be found at Central Files in the electronic archives.	

CONVENTIONAL SYMBOLS	
COUNTY LINE	
TOWN LINE	
LIMITS OF ACCESS	
POINT OF ACCESS	
FENCE LINE	
STONE WALL	
TRAVELED WAY	
GUARD RAIL	
RAILROAD	
SURVEY LINE	
CULVERT	
POWER POLE	
TELEPHONE POLE	
TREES	
CONTROL OF ACCESS	
PROPERTY LINE	
R.O.W. TAKING LINE	
SLOPE RIGHTS	
TOP OF CUT	
TOE OF SLOPE	

SURVEYED BY : N/A  
SURVEYED DATE : N/A

DATUM  
VERTICAL N/A  
HORIZONTAL N/A



**TRAFFIC DATA**

2012 ADT = 950  
DHV = 130  
ADTT = 60  
%T = 3  
%D = 59

18 KIP ESAL (FLEXIBLE)  
TOTAL BOTH DIRECTIONS (1992-2012): 364,000  
DESIGN SPEED = 15 MPH

**BUILT AS DESIGNED**

THESE PLANS ARE SUBJECT TO SUCH ENGINEERING CHANGES AS MAY BE REQUIRED BY THE FEDERAL HIGHWAY ADMINISTRATION OR THE DIRECTOR OF PROGRAM DEVELOPMENT.

CONSTRUCTION IS TO BE CARRIED ON IN ACCORDANCE WITH THESE PLANS AND THE STANDARD SPECIFICATIONS FOR CONSTRUCTION DATED 2006, AS APPROVED BY THE FEDERAL HIGHWAY ADMINISTRATION ON JUNE 15, 2006 FOR USE ON THIS PROJECT, INCLUDING ALL SUBSEQUENT REVISIONS AND SUCH REVISED SPECIFICATIONS AND SPECIAL PROVISIONS AS ARE INCORPORATED IN THESE PLANS.

DIRECTOR OF PROGRAM DEVELOPMENT	
APPROVED <i>James V. Palko</i>	DATE 7-2-2009
PROJECT MANAGER : J. WEAVER	
PROJECT NAME : SHARON	
PROJECT NUMBER : BHF 0177 (8)	
SHEET 1 OF 6 SHEETS	