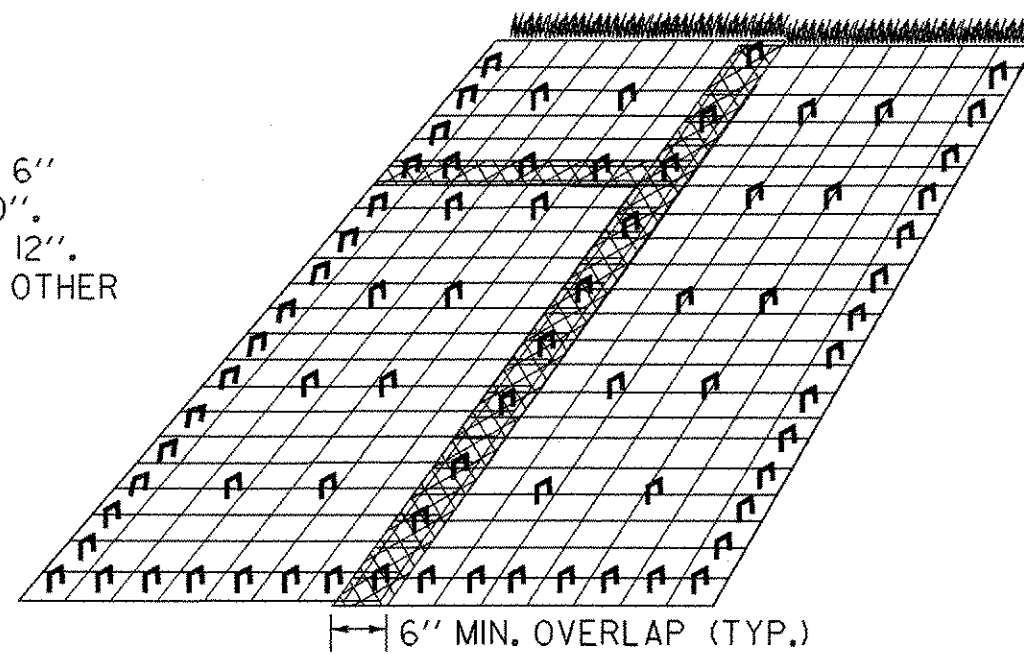
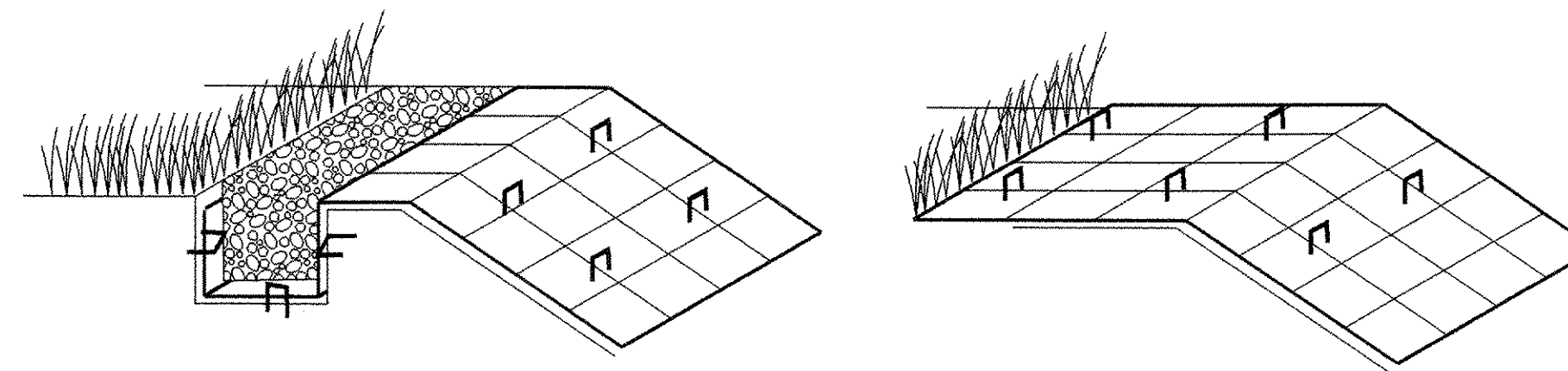


- NOTES:
1. ALL FABRIC OVERLAPS SHALL BE 6" MINIMUM WITH STAPLES EVERY 20".
  2. STAPLE EDGES OF FABRIC EVERY 12".
  3. USE 40" MAX. STAPLE SPACING IN OTHER AREAS.
  4. SEE "EROSION MATTING FOR DITCHES" DETAIL FOR ANCHORING AT TOPS OF SLOPES.



EROSION MATTING FOR SLOPES STEEPER THAN 1:3



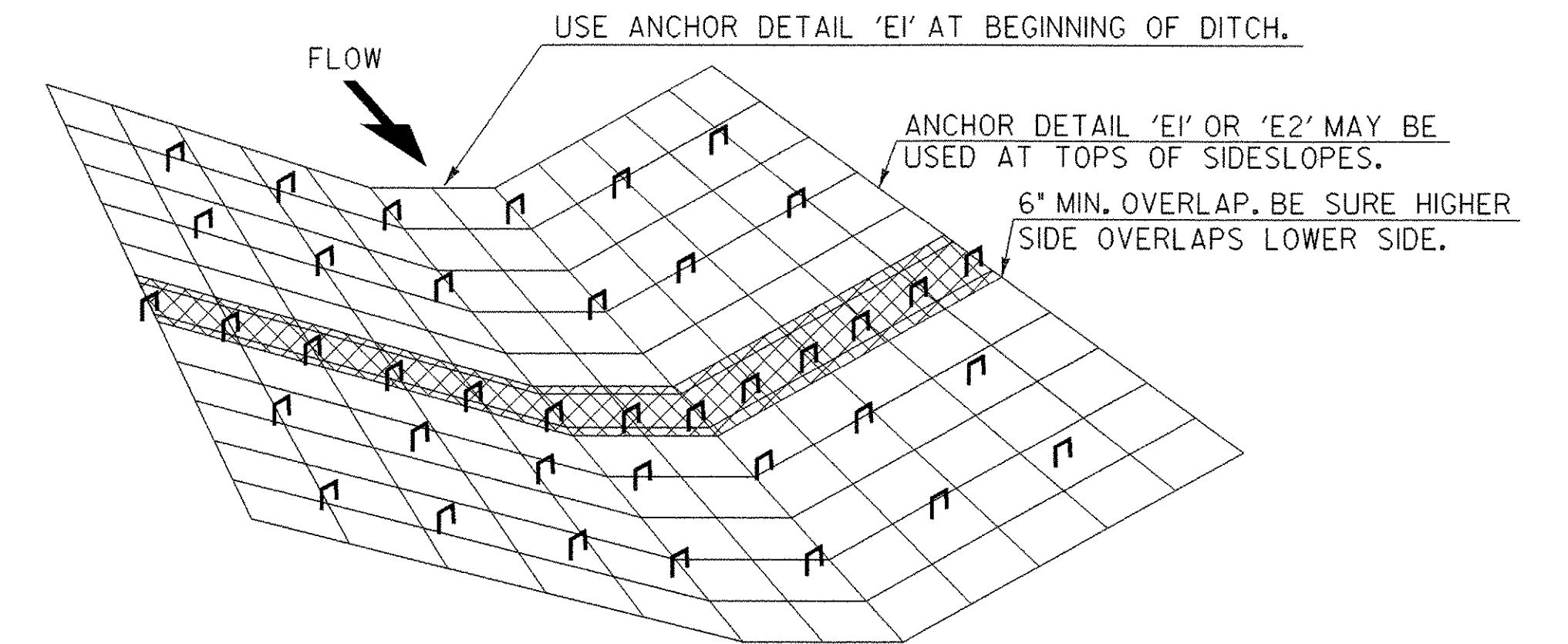
ANCHOR DETAIL 'E1'

INSERT & STAPLE FABRIC INTO 6" X 6" TRENCH PRIOR TO BACKFILLING & COMPACTING SOIL. USE 3 STAPLE PATTERN EVERY 20".

ANCHOR DETAIL 'E2'

IF THE TOP OF SLOPE IS RELATIVELY FLAT EXTEND MATERIAL APPROXIMATELY 24" AND STAPLE EVERY 20" MINIMUM.

ANCHOR DETAILS FOR EROSION MATTING



EROSION MATTING FOR DITCHES

1. TO BE USED WHERE SLOPE OF DITCHLINE EXCEEDS 5%.
2. OVERLAPS SHALL BE 6" MINIMUM IN THE DIRECTION OF FLOW AND STAPLED EVERY 20" MIN. THROUGH BOTH FABRICS.
3. USE 40" MAX STAPLE SPACING IN OTHER AREAS.

**SEEDING FORMULA  
RURAL AREAS**

% WT.	LBS./A.	NAME	PUR %	GERM %
37.5	22.5	CREeping RED FESCUE	98	85
37.5	22.5	TALL FESCUE	95	90
5.0	3.0	RED TOP	95	90
15.0	9.0	BIRDSFOOT TREFOIL	98	85
5.0	3.0	ANNUAL RYEGRASS	95	85
100.0	60.0			

**GENERAL NOTES**

SEED MIXTURE: SHALL NOT HAVE A WEED CONTENT EXCEEDING 0.40% BY WEIGHT AND SHALL BE FREE OF ALL NOXIOUS SEED.

SEED: TO BE APPLIED PER SEEDING FORMULAS OR AS DIRECTED BY THE ENGINEER.

FERTILIZER: FORMULA 10-20-10, TO BE USED WITH SEED, APPLIED AT THE RATE OF 500 LBS./ACRE. (HYDRO SEEDERS MAY USE 19-19-19 FORMULA).

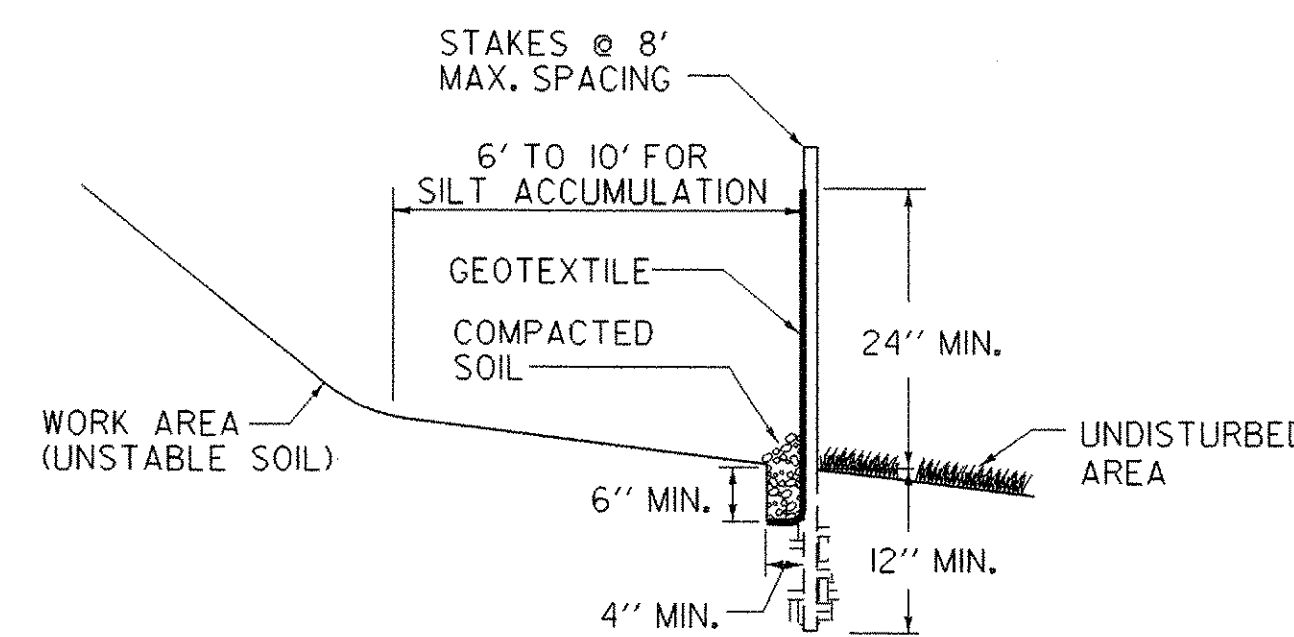
AGRICULTURAL LIMESTONE: TO BE APPLIED AT THE RATE OF 2 TONS/ACRE, OR AS DIRECTED BY THE ENGINEER.

HAY MULCH: TO BE PLACED ON EARTH SLOPES AT THE RATE OF 2 TONS/ACRE, OR AS DIRECTED BY THE ENGINEER.

TOPSOIL: TO BE USED WITH SEED AS INDICATED ON THE PLANS, OR AS DIRECTED BY THE ENGINEER.



WRAP POSTS & SILT FENCE FABRIC AROUND EACH OTHER BEFORE POUNDING INTO GROUND.



SILT FENCE

NOTES :

1. DO NOT USE SILT FENCE IN STREAMS, DRAINAGE DITCHES, OR AREAS OF CONCENTRATED FLOW.
2. BACK WITH STAKED-IN-PLACE HAY BALES OR WIRE FENCE IF ADDITIONAL SUPPORT IS NEEDED.
3. MUST BE REMOVED WHEN SOIL IS STABILIZED.

NOTE: FOR ADDITIONAL EROSION CONTROL MEASURES REFER TO:  
THE LOW RISK SITE HANDBOOK FOR EROSION PREVENTION AND SEDIMENT CONTROL;  
VERMONT EROSION PREVENTION AND SEDIMENT CONTROL FIELD GUIDE;  
AND THE VERMONT STANDARDS AND SPECIFICATIONS FOR EROSION PREVENTION AND SEDIMENT CONTROL.

PROJECT NAME: RANDOLPH	
PROJECT NUMBER: BHO_1444 (50)	
FILE NAME: s06j094erc.dwg	PLOT DATE: 4/12/06
PROJECT MANAGER: J. WEAVER	DRAWN BY: J. IBEI
DESIGNED BY: J. IBEI	CHECKED BY: J. WEAVER
ESPC_SHEET_4--DETAILS_1	SHEET 10 OF 18