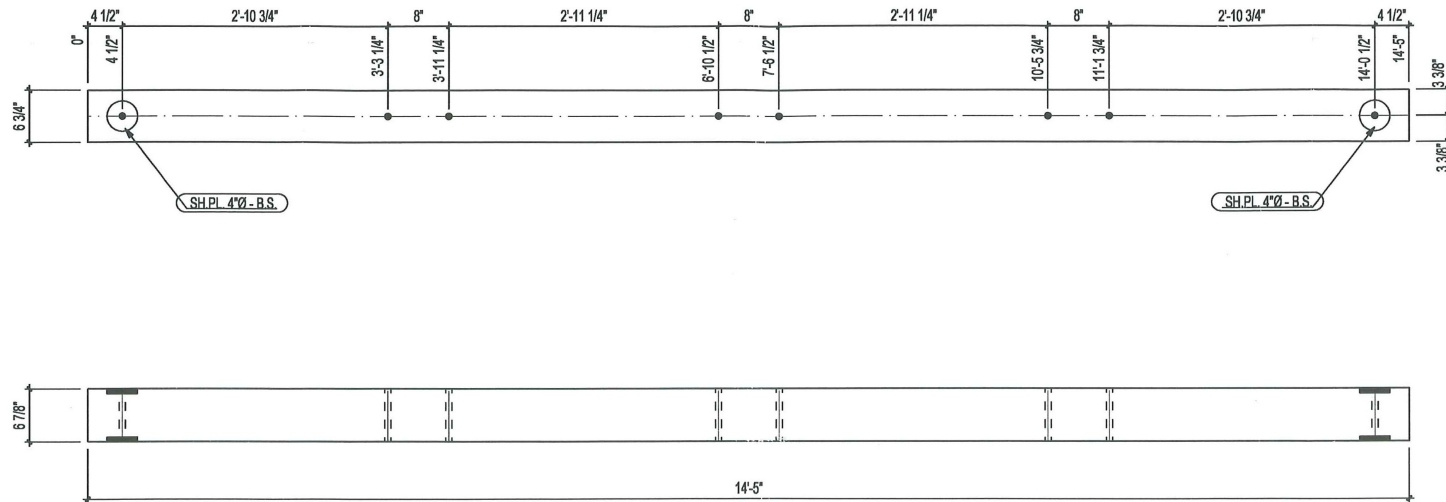


TREATMENT AFTER FAB. WITH 0.6 TYPE A PENTACHOLROPHENOL



FOR RE-APPROVAL - 14/04/2010
 FOR RE-APPROVAL - 19/03/2010
 FOR RE-APPROVAL - 19/02/2010
 FOR APPROVAL - 02/02/2010

Prod: B6

Stiffner Beam		IMPRIMER / PRINTED: 14.06.2010	TROU/HOLE TYP. S.I.C./U.N.O.	21mmØ 13/16"Ø	Qté/Qty: 4	Echelle/Scale: 1:16	14.01.2010	Goodfellow Distribution inc. 368, Pepsi Road Manchester, NH, 03109 Tel.: 1-800-361-0625 Fax: 1-877-638-8135
Project/Project: Worrall Covered Bridge - Rockingham, VT No.: 2009-190-U // G-65639 Client / Customer: NEIL H. DANIELS, INC.		FABRICATION 26/04/2010	DATE: _____ REVISION _____	Stress Grade: 16F-V2 App. Grade: Industrial	X-section: 6 3/4" / 6 7/8" Longueur/Lenght: 14'-5" Materiel/Material: Southern Pine	By: J.M. Checked: R.D.		

*Rec'd 7/1/10
DA*