

DRAFTED BY

CHECKED BY

DESIGNED BY

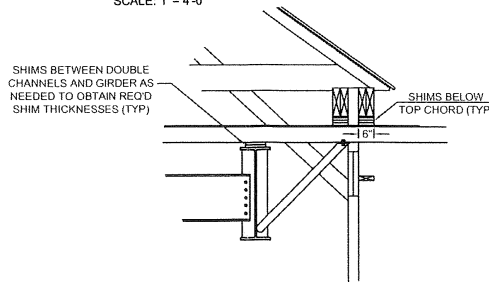
	J1	J2	J3	J4	J5	J6	J7	J8	J9	J10	J11	J12
EXISTING TOP CHORD CAMBER (3" IN 80')	MEAS. -0.31"	0.83"	1.73"	2.39"	2.81"	2.99"	2.93"	2.63"	2.09"	1.31"	MEAS. 0.29"	-0.31"
ANTICIPATED DEFLECTION (1" @ MIDSPAN)	END BR -0.00"	-0.31"	-0.60"	-0.81"	-0.94"	-1.00"	-0.98"	-0.88"	-0.71"	-0.46"	END BR -0.14"	-0.00"
BEAM DEFLECTION (1.25" @ MIDSPAN)	+0.37"	BRG -0.05"	-0.48"	-0.86"	-1.13"	-1.27"	-1.26"	-1.09"	-0.79"	-0.39"	BRG +0.06"	+0.28"
TOTAL SHIM THICKNESS REQUIRED	-0.68"	+1.19"	+2.81"	4.06"	+4.88"	+5.26"	+5.15"	+4.80"	+3.59"	+2.18"	+0.37"	-0.59"
TOTAL SHIM THICKNESS TO BE PROVIDED	0"	1 1/8"	3 1/2"	4 3/4"	5 9/16"	5 9/16"	5 9/16"	5 1/2"	4 1/4"	2 7/8"	1 1/8"	1/8"

NOTES:

- CAMBERING OF THE BRIDGE IS TO BE ACHIEVED BY PLACING SUPPORT BEAMS BENEATH THE TOP CHORDS OF THE TRUSSES AT 8 FOOT SPACINGS (SEE SHEET 3) AND PLACING SHIMS BETWEEN THESE SUPPORT BEAMS AND THE TOP CHORD TO ACHIEVE THE DESIRED PROFILE/CAMBER FOR THE BRIDGE.
- 1 INCH OF DEAD LOAD DEFLECTION IS ANTICIPATED IN THE TIMBER TRUSSES, 1 1/4 INCHES OF DEFLECTION IS ANTICIPATED IN THE W36x150 SHORING GIRDERS, AND 3 INCHES OF CAMBER CURRENTLY EXISTS.
- PROVIDE THE SPECIFIED SHIM THICKNESSES AT EACH BRIDGE SUPPORT JOIST BENEATH THE TOP CHORDS OF THE TRUSSES. IF SUFFICIENT SPACE FOR THE SHIMS DOES NOT EXIST BETWEEN BRIDGE SUPPORT JOISTS AND THE TOP CHORDS OF THE TRUSSES, PLACE THE BALANCE OF THE REQUIRED SHIM THICKNESS BETWEEN THE BRIDGE SUPPORT JOISTS AND THE SHORING GIRDERS.
- PROVIDE 16 SQUARE INCHES OF BEARING (SHIM) AREA BETWEEN THE UNDERSIDE OF TOP CHORD AND BRIDGE SUPPORT JOISTS (PG. 16 OF CALCULATIONS). SHIMS TO BE NO. 2 OAK OR A36 STEEL PLATES.
- FOR BEARING AREAS BETWEEN THE BRIDGE SUPPORT JOISTS AND THE W36x150 SHORING GIRDERS; PROVIDE 6 SQUARE INCHES OF BEARING AREA FOR A36 STEEL SHIMS, OR 20 SQUARE INCHES OF BEARING AREA FOR NO. 2 OAK SHIMS.
- ONCE THE SHIMS ARE IN POSITION, JACK THE BRIDGE, PLACE STEEL BEARING SHIMS BETWEEN THE JACK BOXES AND W36x150 GIRDERS AND TACK-WELD THEM IN PLACE (2 INCHES IF 1/8" FILLET WELD PER SHIM PER LAYER)

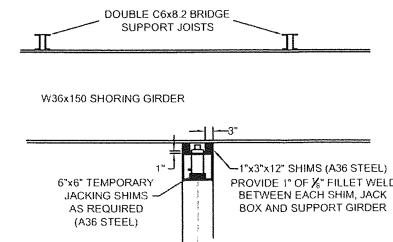
CAMBERING SHIM DETAIL

SCALE: 1" = 4'-0"




JACKING SHIM DETAIL

SCALE: 1" = 4'-0"



WORRALL COVERED BRIDGE (BRIDGE #40) WILLIAMS ROAD SHORING, STAGING & REHABILITATION PLAN	
REHABILITATION PLAN (CAMBER BRIDGE)	
SCALE	N.T.S.
DATE	DECEMBER 1, 2009
JOB NUMBER	BHO 1442 (34)
FILE	BR40.dwg
SHEET	6 OF 9
DRAWING NUMBER	CAMBER-1



**DANIELS
CONSTRUCTION**
ASCUTNEY, VT 05630