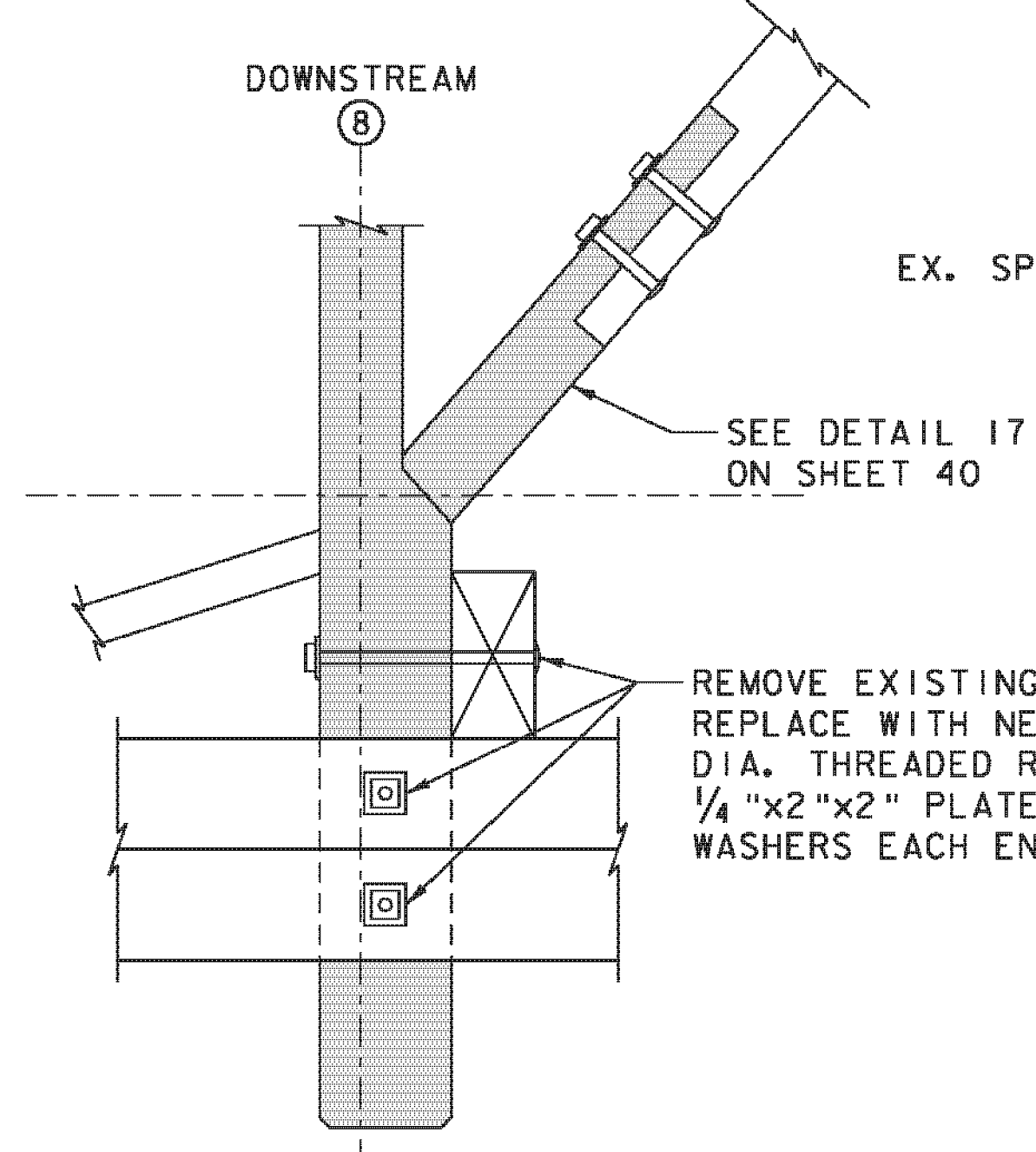


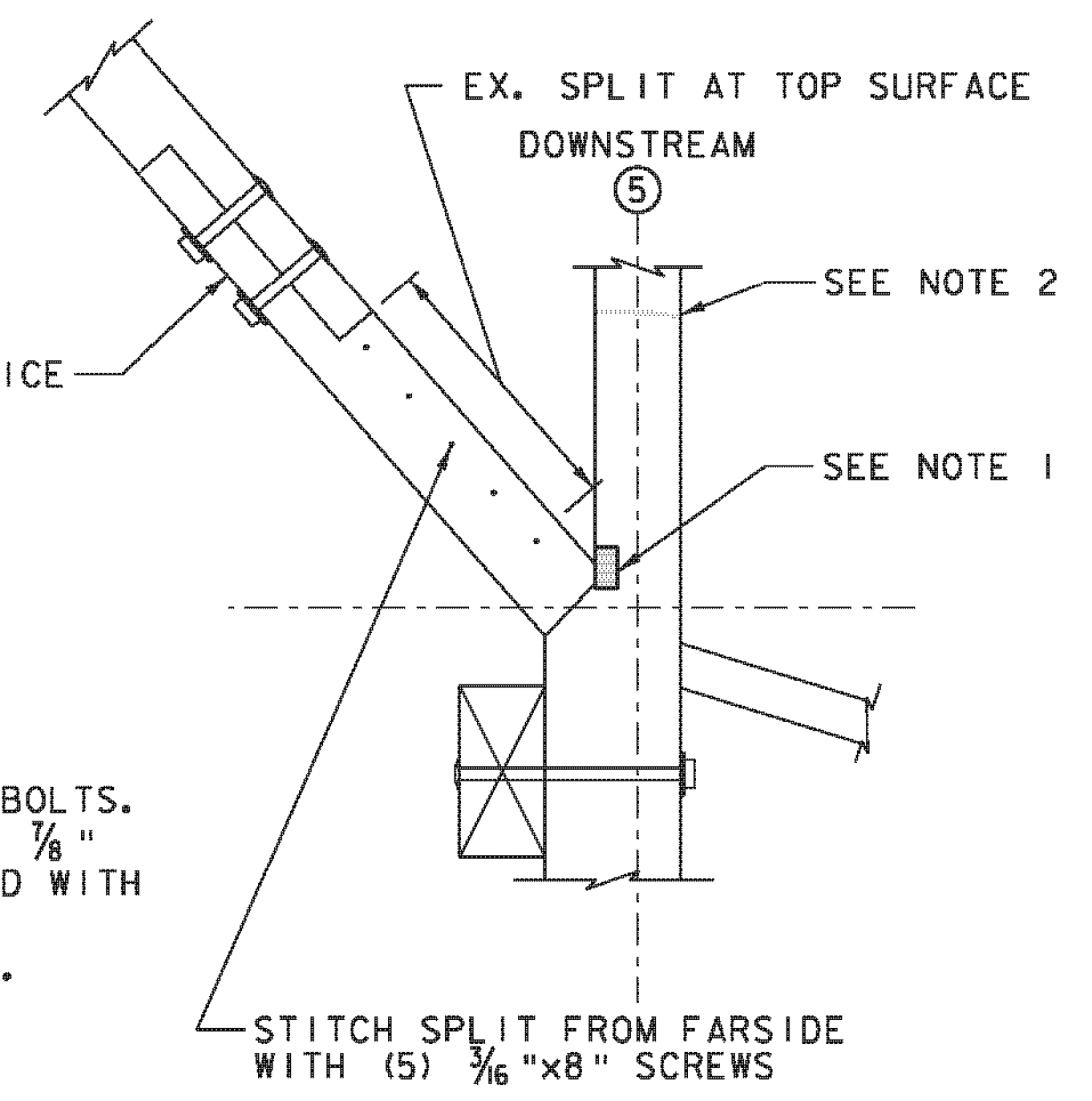
NOTES:

1. REMOVE UNSOUND MATERIAL AT NEAR LEFT CORNER OF POST (DO NOT REMOVE MORE THAN 1" DEPTH FROM FACE WITHOUT PRIOR APPROVAL OF RESIDENT ENGINEER). SAND SMOOTH, WITH CURVED TRANSITIONS TO UNDISTURBED SURFACES.
2. REMOVE UNSOUND MATERIAL AT END OF DIAGONAL. RESIDENT ENGINEER TO VERIFY MINIMUM OF 30 SQUARE INCHES OF SOUND BEARING REMAINS BETWEEN DIAGONAL AND POST AT SLOPED SURFACE.
3. PATCH END OF DIAGONAL SIMILAR TO DETAIL 16 ON SHEET 40. PATCH CONFIGURATION TO BE FIELD VERIFIED BY RESIDENT ENGINEER BEFORE INSTALLATION.

DETAIL 19
POST AND DIAGONAL REPAIRS
 (REF: T57)
 SCALE: 1" = 1'-0"



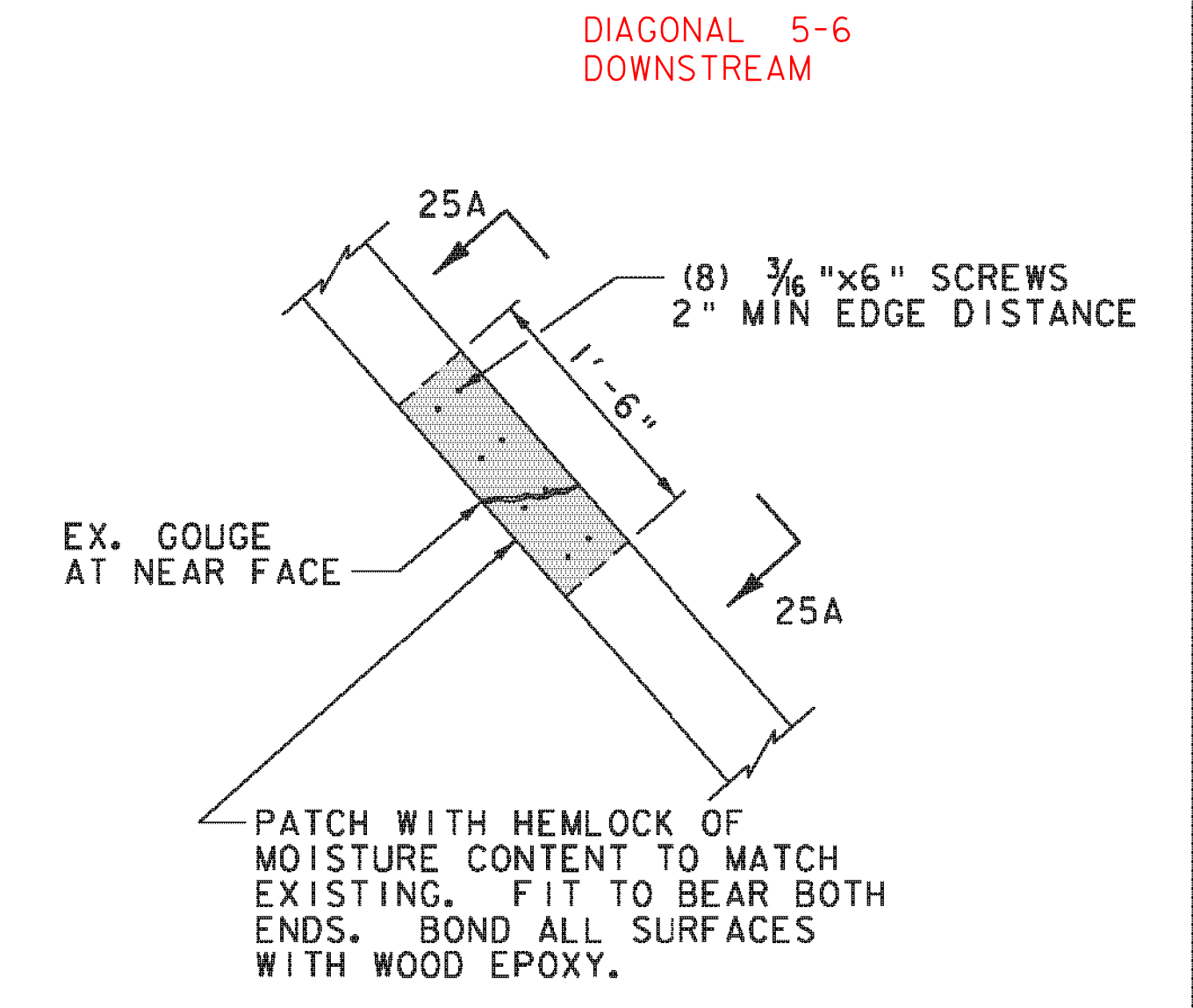
DETAIL 20
POST AND DIAGONAL REPAIRS
 (REF: T58)
 SCALE: 1" = 1'-0"



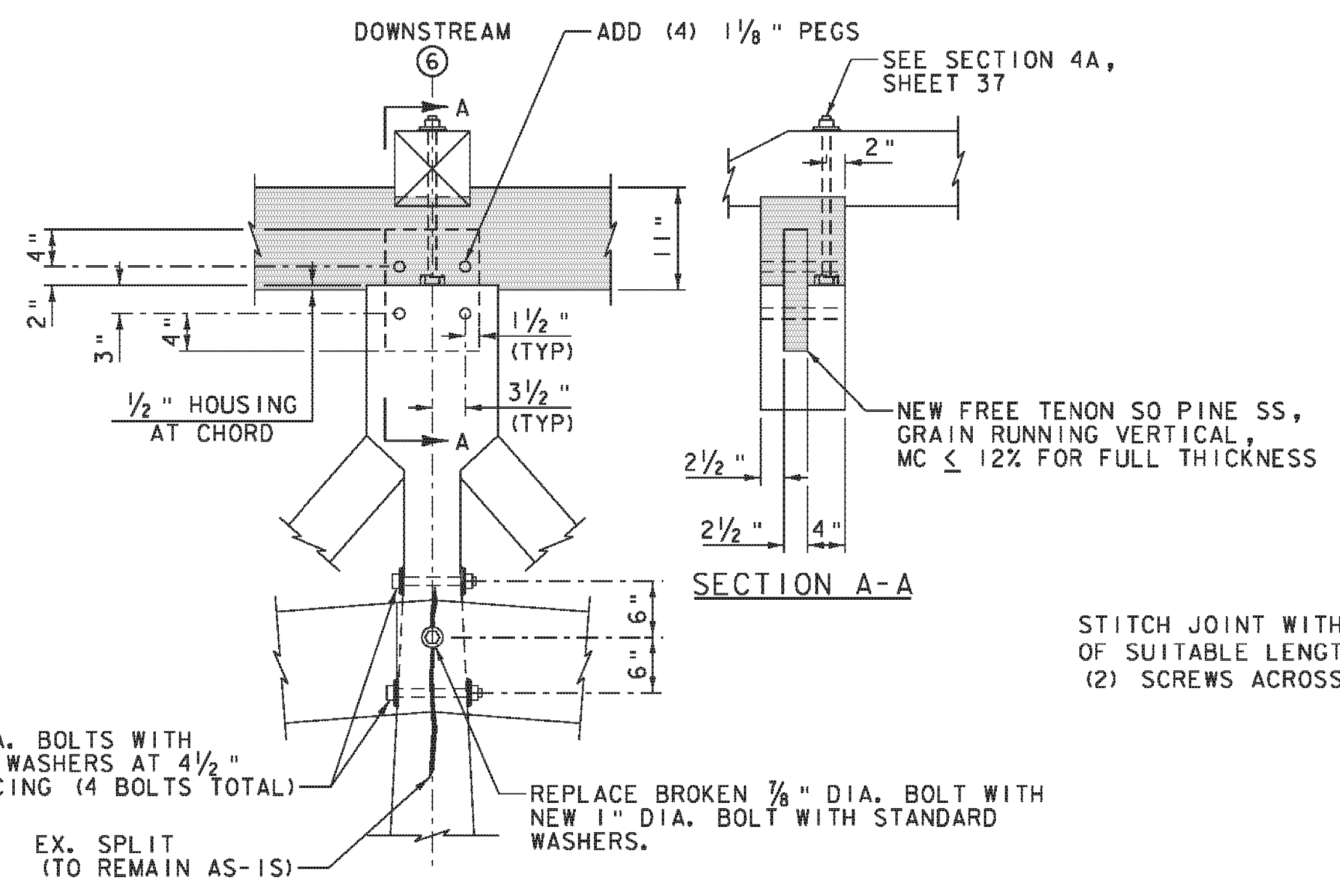
NOTES:

1. REMOVE UNSOUND MATERIAL AT NEAR LEFT CORNER OF POST (DO NOT REMOVE MORE THAN 1" DEPTH FROM LEFT FACE OR MORE THAN 1/2" DEPTH FROM NEAR FACE WITHOUT PRIOR APPROVAL OF RESIDENT ENGINEER). SAND SMOOTH, WITH CURVED TRANSITIONS TO UNDISTURBED SURFACES.
2. EX. 1" DEEP GASH AT NEAR FACE. REMOVE DAMAGED MATERIAL (DO NOT REMOVE MORE THAN 1 1/2" DEPTH FROM NEAR FACE WITHOUT PRIOR APPROVAL FROM RESIDENT ENGINEER). SAND SMOOTH, WITH CURVED TRANSITIONS TO UNDISTURBED SURFACES.

DETAIL 21
POST AND DIAGONAL REPAIRS
 (REF: T59)
 SCALE: 1" = 1'-0"



DETAIL 25
DIAGONAL REPAIR
 (REF: T64)
 SCALE: 1" = 1'-0"

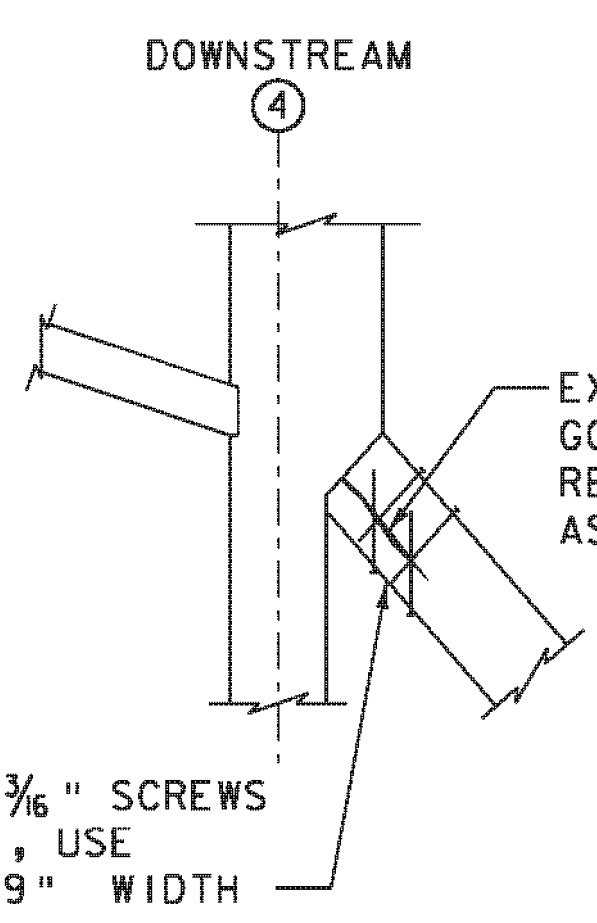


ADD (2) 5/8" DIA. BOLTS WITH MALLEABLE IRON WASHERS AT 4 1/2" HORIZONTAL SPACING (4 BOLTS TOTAL)

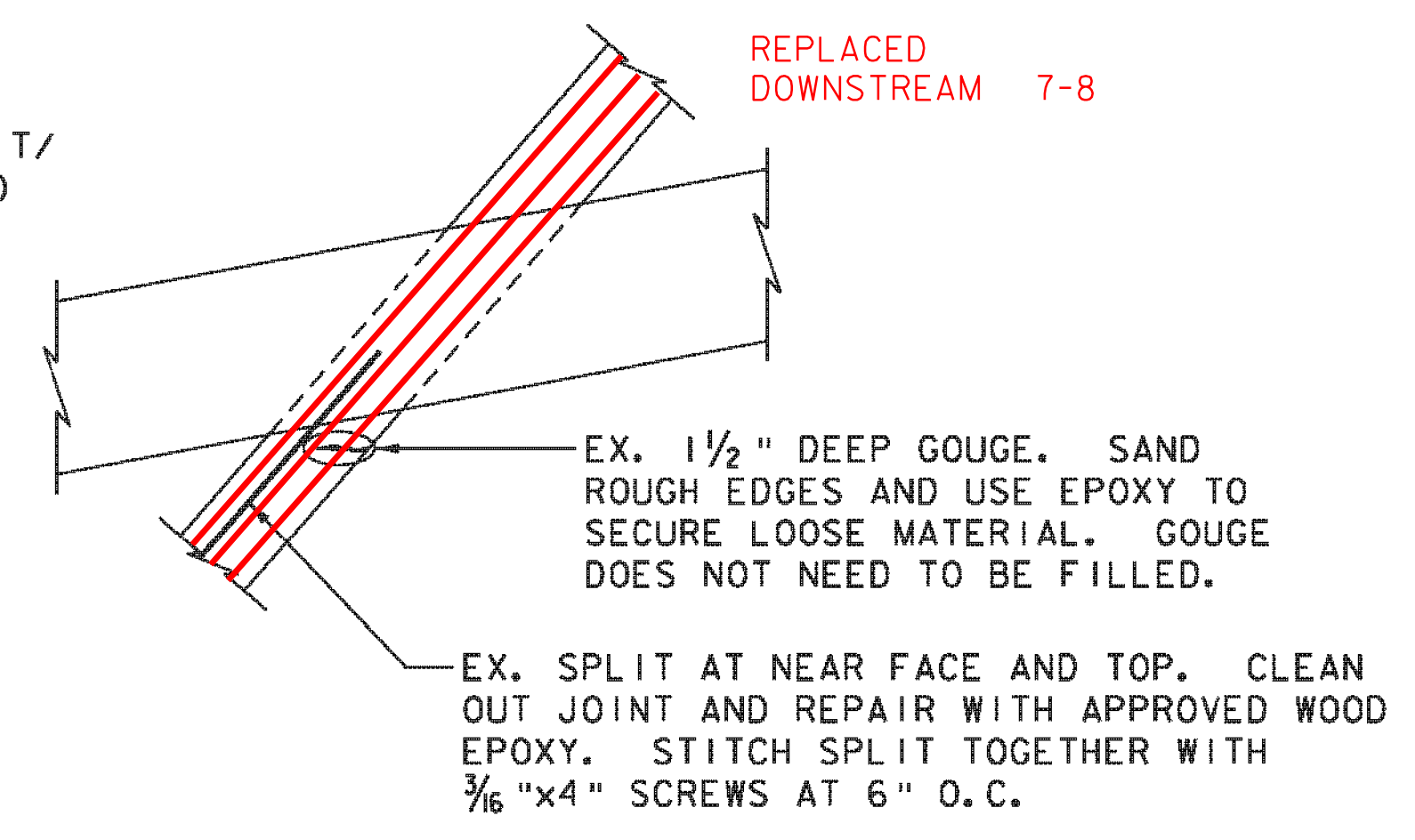
EX. SPLIT (TO REMAIN AS-IS)

REPLACE BROKEN 3/8" DIA. BOLT WITH NEW 1" DIA. BOLT WITH STANDARD WASHERS.

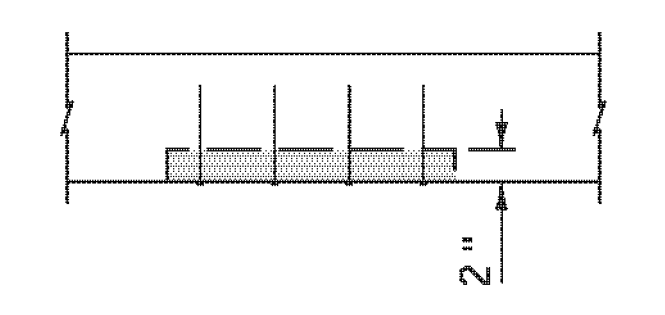
DETAIL 22
POST REPAIRS
 (REF: T60)
 SCALE: 1" = 1'-0"



DETAIL 23
DIAGONAL REPAIR
 (REF: T61)
 SCALE: 1" = 1'-0"



DETAIL 24
DIAGONAL REPAIR
 (REF: T63)
 SCALE: 1" = 1'-0"



DETAIL 25A
PLAN VIEW
 SCALE: 1" = 1'-0"

- LEGEND FOR DETAILS**
- PREDETERMINED MEMBERS TO BE REPLACED (SIZE TO MATCH EXISTING, UNLESS OTHERWISE NOTED)
 - PREDETERMINED PORTION OF EXISTING MEMBER TO BE REPLACED (MATCH SIZE OF EXISTING)
 - ADDED MEMBER
 - UN SOUND MATERIAL TO BE REMOVED

PROJECT NAME:	CHARLOTTE	FILE NAME:	z06J088details bridge.dgn	PLOT DATE:	10/4/2012
PROJECT NUMBER:	BHO 1445(34)	PROJECT LEADER:	M.A. COLGAN	DRAWN BY:	K.D. WENTWORTH
		DESIGNED BY:	K.E. HILL	CHECKED BY:	M.A. COLGAN
		BRIDGE DETAILS (5 OF 8)		SHEET	41 OF 55

