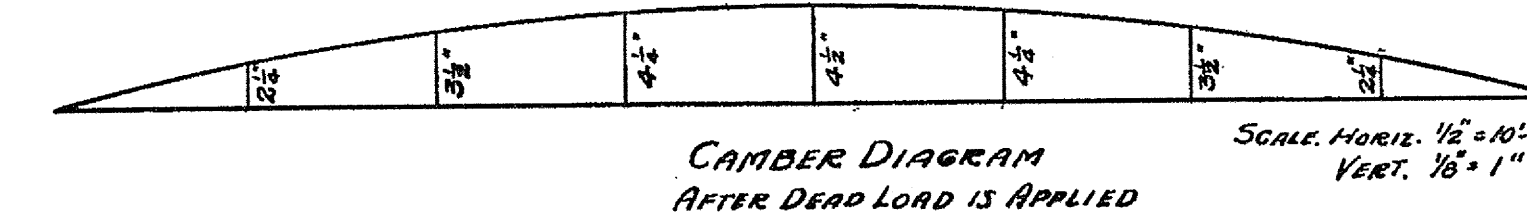


TOP PLAN

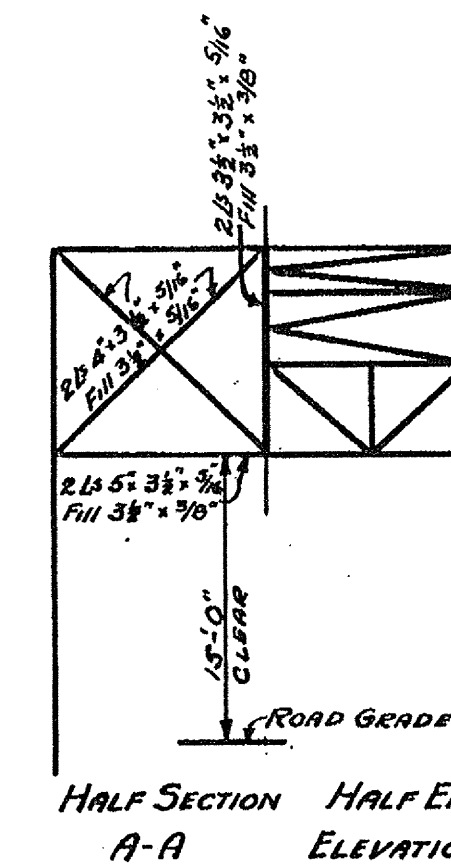


CAMBER DIAGRAM  
AFTER DEAD LOAD IS APPLIED

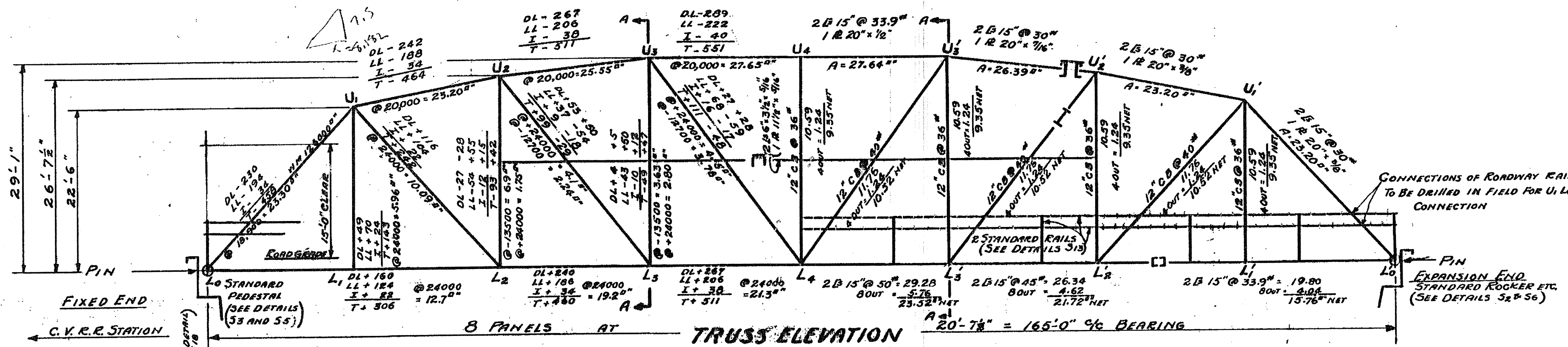
SCALE: HORIZ. 1/2" = 10'-0"  
VERT. 1/8" = 1"

NOTES:

REFERENCES:  
FOR THIS BRIDGE USE SHEET SB-1, STANDARD DETAILS,  
Nos. 52, 53, 55, 57, 59, 510, 512, 513, 514, 518, 521, 515 MODIFIED.  
SPECIFICATIONS (DESIGN)  
DESIGN AREA 1920 REVISED  
DL-STRESSES 16000#, LL (DOUBLED) 24000#, I\* L-TIES  
FLOOR DESIGN FOR 2-15 TON TRUCKS 85% REAR  
13'-0" W/4 FLEES, 6" W/4 WHEELS MEETING OR PASSING  
SIDE WALK 86" DEE SQ. FT. NO IMPACT  
TRUSS DESIGN FOR 115' LOADING  
CONCENTRATED LOAD 13500 FOR MOMENTS  
UNIFORM LOAD 480 LBS. PER FOOT OF LANE  
PLUS 52x5x260" INTRUSION LOAD FROM SIDEWALK PLUS  
DEAD LOAD +25" INTRUSION ALLOWANCE.  
SPECIFICATIONS FABRICATION AND ERECTION  
VERMONT STANDARD ROAD AND BRIDGE SPECIFICATIONS 1926  
FLEETS 7/8" EXCEPT AT L<sub>0</sub> HERE 1/16"  
BOTTOM CHORD BRIGES SHALL BE DETAILED  
OUTSIDE OF GUSSETT PLATE AND AS CLOSE THERE TO  
AS PRACTICABLE.



HALF SECTION HALF END  
A-A ELEVATION



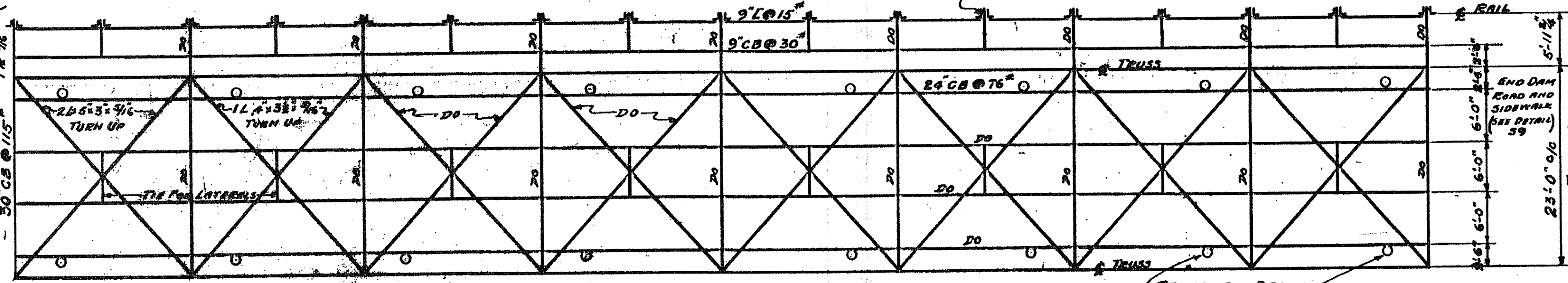
TRUSS ELEVATION

ROADWAY	
STRINGERS	FLOOR BEAMS
DL 39H"	DL 181H"
LL 238H" X	LL 354 H"
I 77H"	I 118 H"
T 354 H"	T 653H"
@ 1/2" = 178IN <sup>2</sup>	@ 2/3" = 327IN <sup>2</sup>
24" CB @ 76" S=182.0 IN <sup>2</sup>	30" CB @ 115" S=332.4 IN <sup>2</sup>

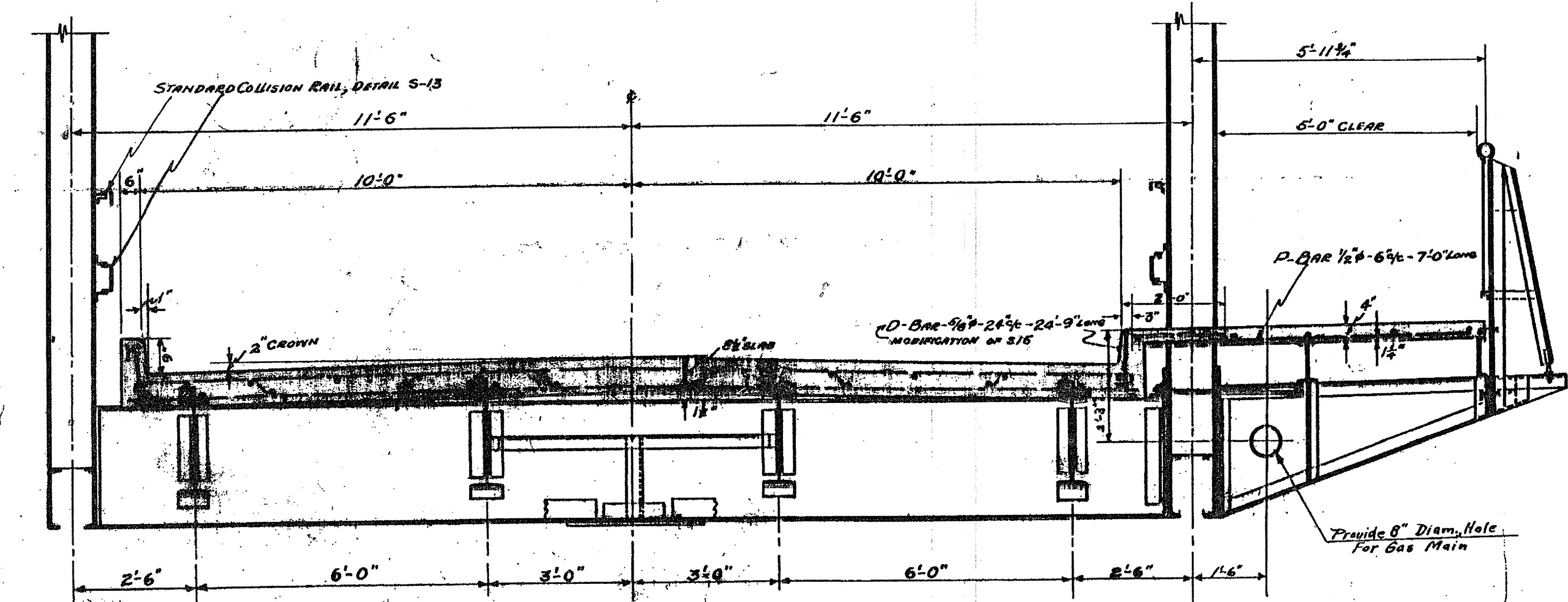
SIDEWALK STRINGERS	
OUTSIDE	INSIDE
DL 71	DL 10.5
LL 14.4	LL 34.8
T 21.5	T 45.3
@ 1/2" = 10.75 IN <sup>2</sup>	@ 1/2" = 22.65 IN <sup>2</sup>
9" I @ 15" S=112.7 IN <sup>2</sup>	9" CB 30" S=22.53 IN <sup>2</sup>

STRESSES IN KIPS.



FLOOR PLAN

SCALE 1" = 10'-0"



TYPICAL CROSS SECTION OF BRIDGE

STEEL SUPERSTRUCTURE  
165'-0" W/4 BEARINGS-20' ROADWAY  
21-15  
FOR  
TAYLOR ST. BRIDGE  
MONTPELIER - VT.

$$\frac{170}{165} \times 277,000 \times \frac{21}{10} = 415,500$$

DESIGNED BY:  
A. O. Bishop  
BRIDGE ENGINEER

ESTIMATED QUANTITIES	
STRUCTURAL STEEL	277,000 LBS.
REINFORCING STEEL	18,820 LBS.
CONCRETE CLASS A	108 CU. YD.

Surveyed by	WALKER
Designed by	BISHOP
Drawn by	BISHOP
Traced by	DUNN
Checked by	
Series	No.
	Filed