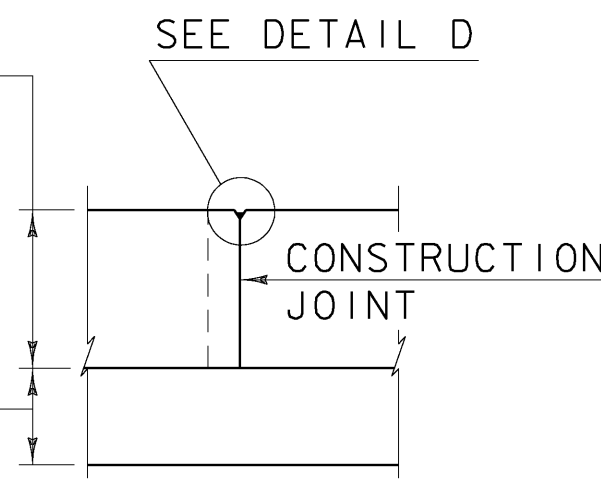
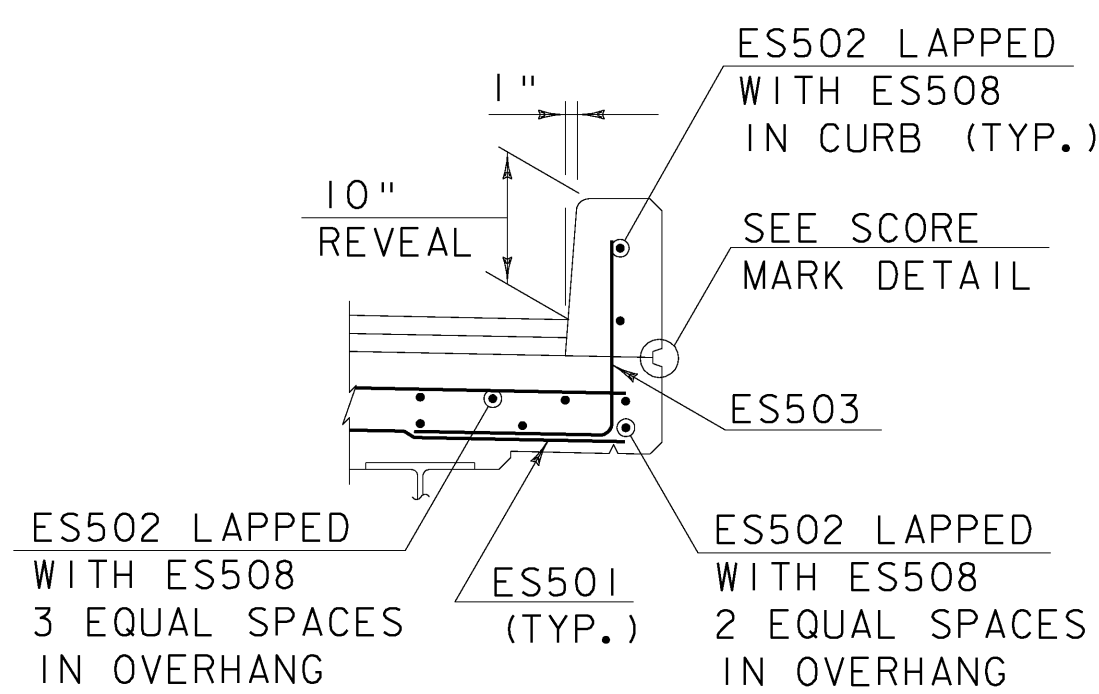


10" CONCRETE CURB
ITEM 900.608 SPECIAL
PROVISION (HIGH
PERFORMANCE CONCRETE,
CLASS A LOW CEMENT)

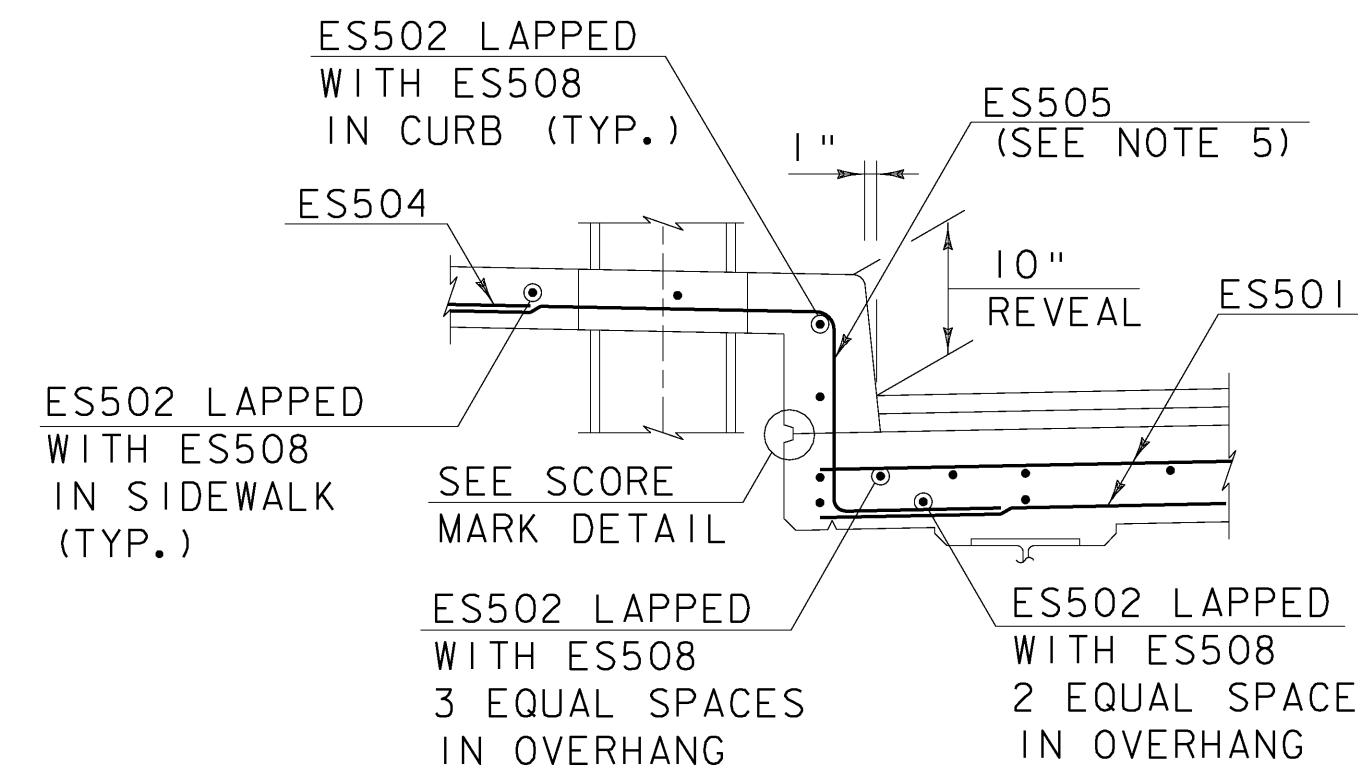
8 1/2" CONCRETE DECK
ITEM 900.608 SPECIAL
PROVISION (HIGH
PERFORMANCE CONCRETE,
CLASS A LOW CEMENT)



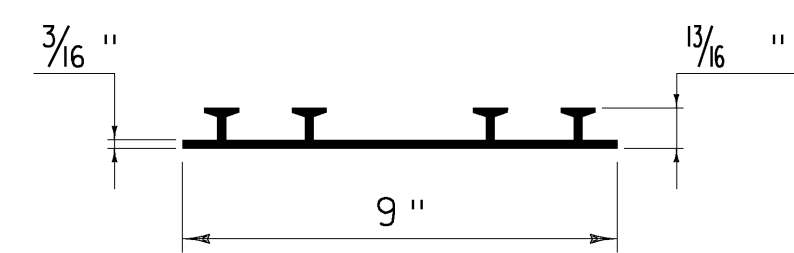
SECTION A-A
SCALE 3/4" = 1'-0"



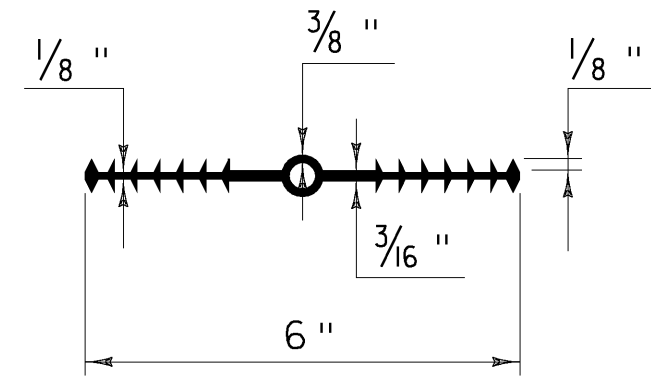
DETAIL A
SCALE 3/4" = 1'-0"



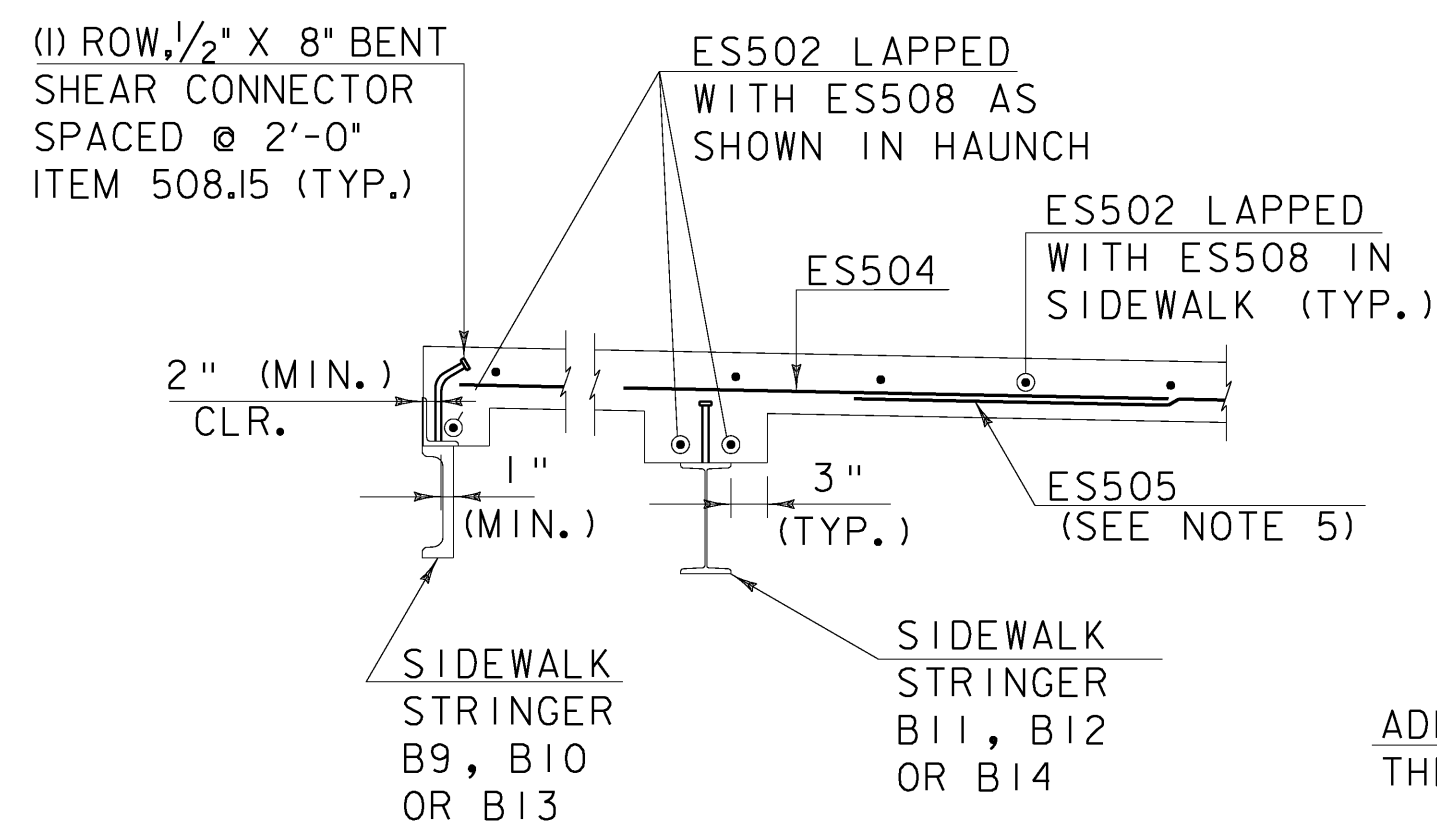
DETAIL B
SCALE 3/4" = 1'-0"



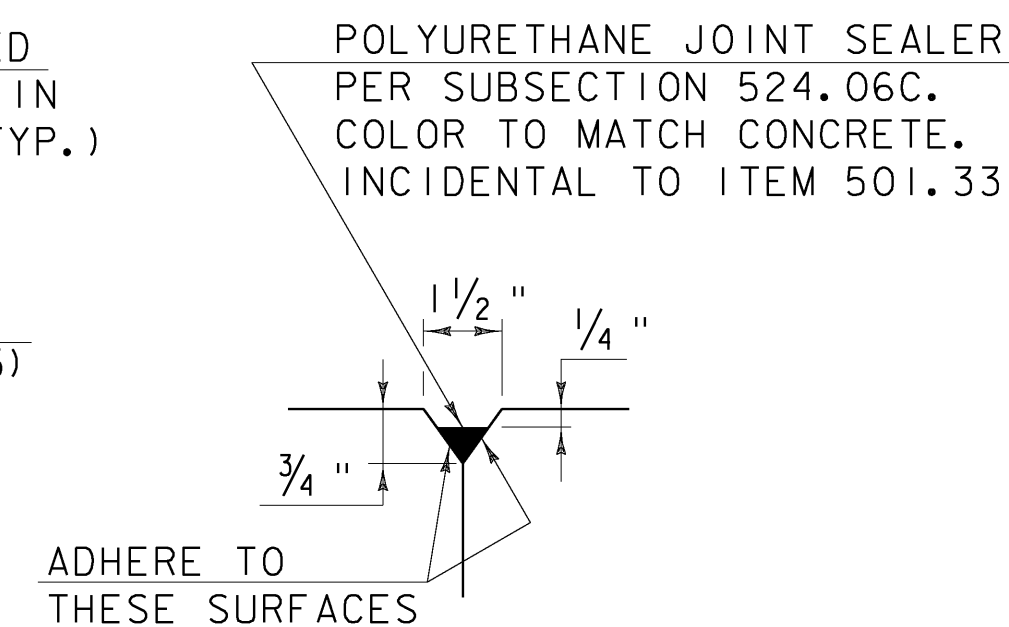
**P.V.C. WATERSTOP FOR
CONSTRUCTION JOINTS**
NOT TO SCALE



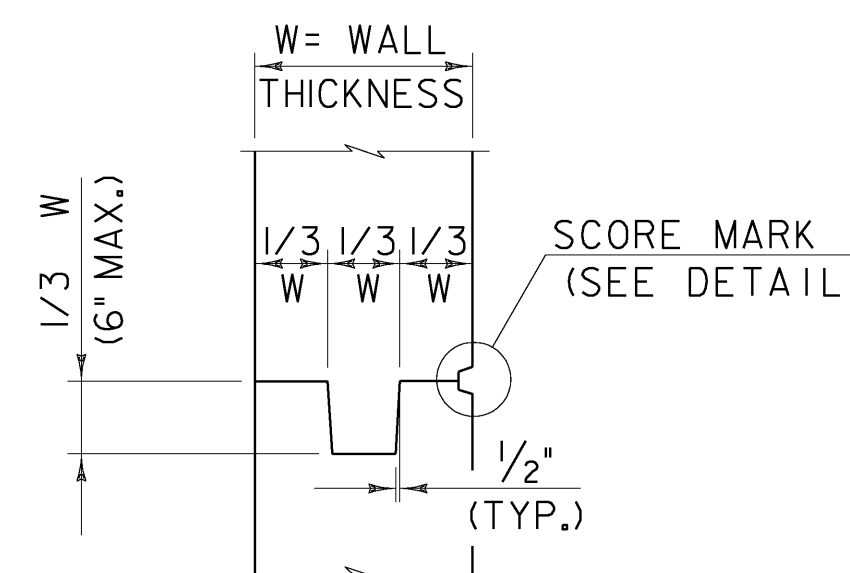
**P.V.C. WATERSTOP FOR
STRUCTURE RETROFIT**
NOT TO SCALE



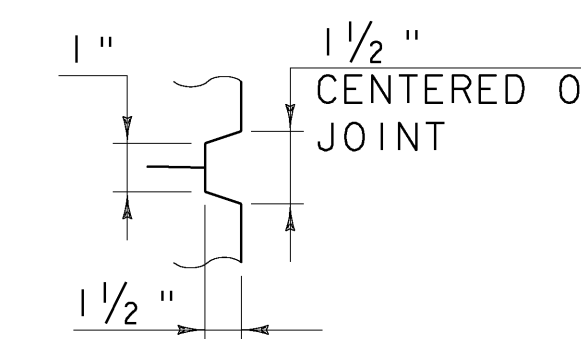
DETAIL C
SCALE 3/4" = 1'-0"



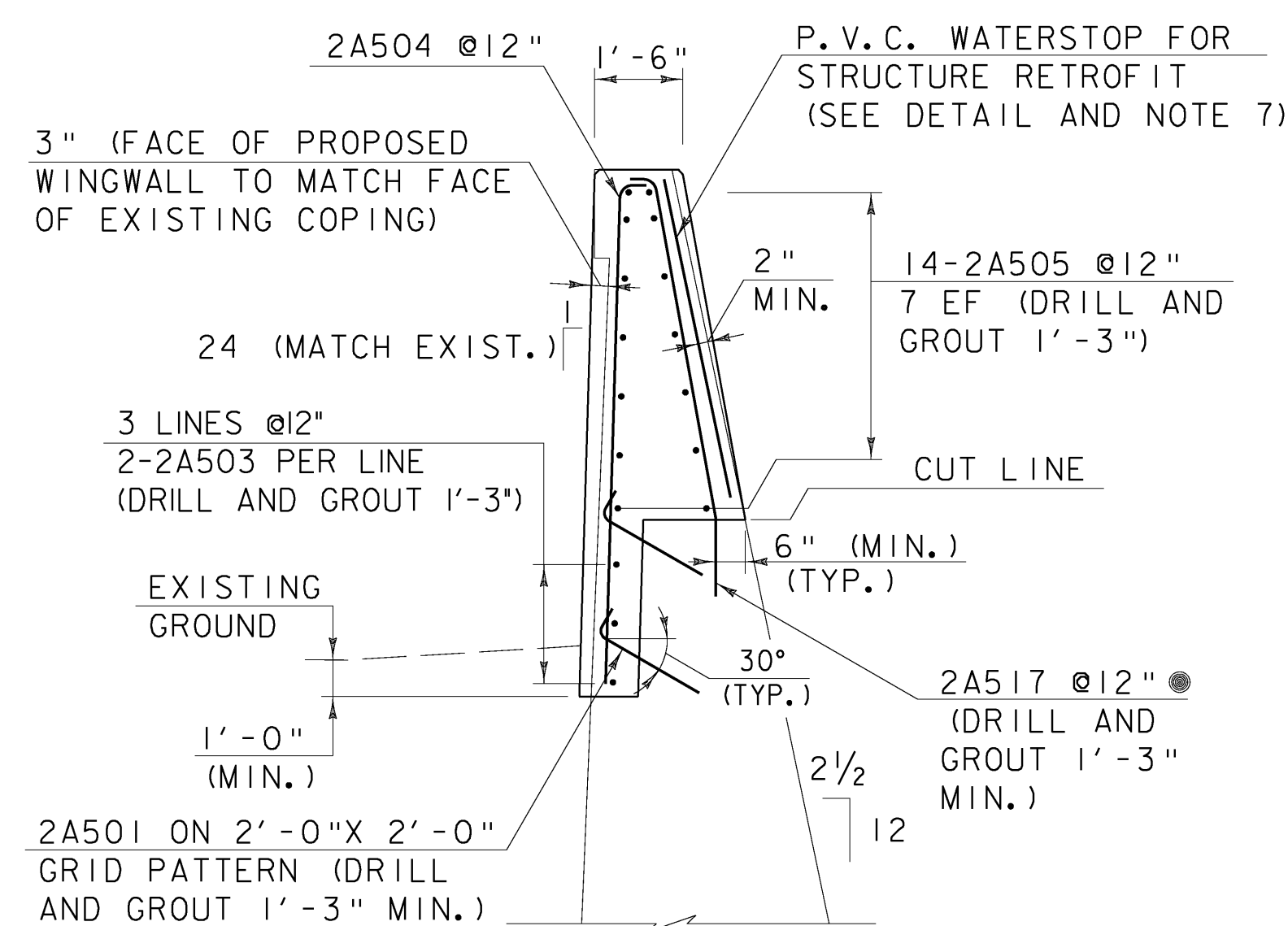
DETAIL D
NOT TO SCALE



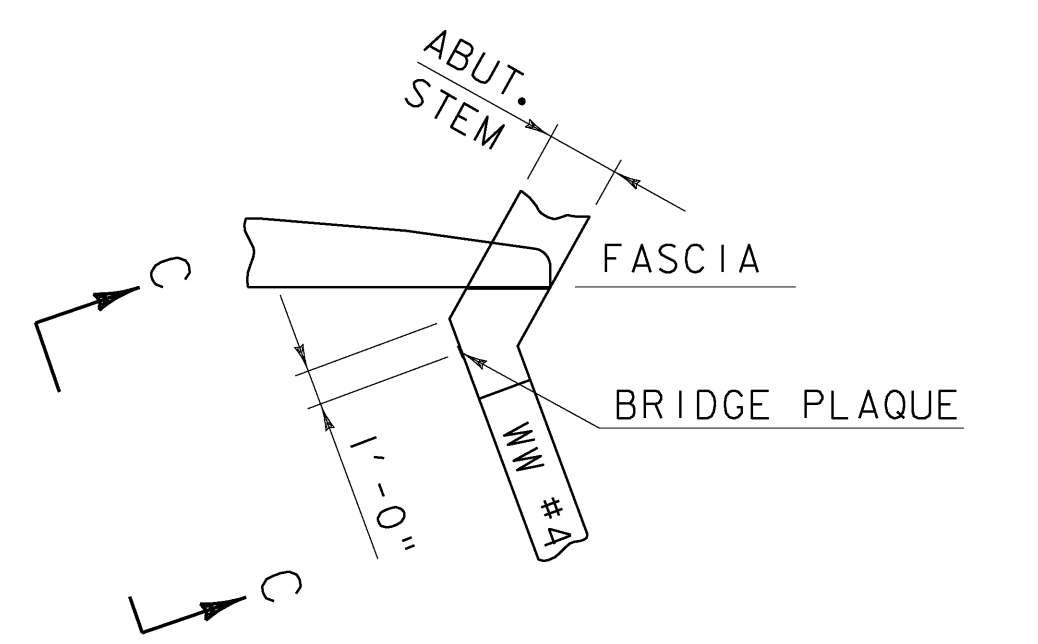
**TYPICAL CONCRETE
CONSTRUCTION JOINT**



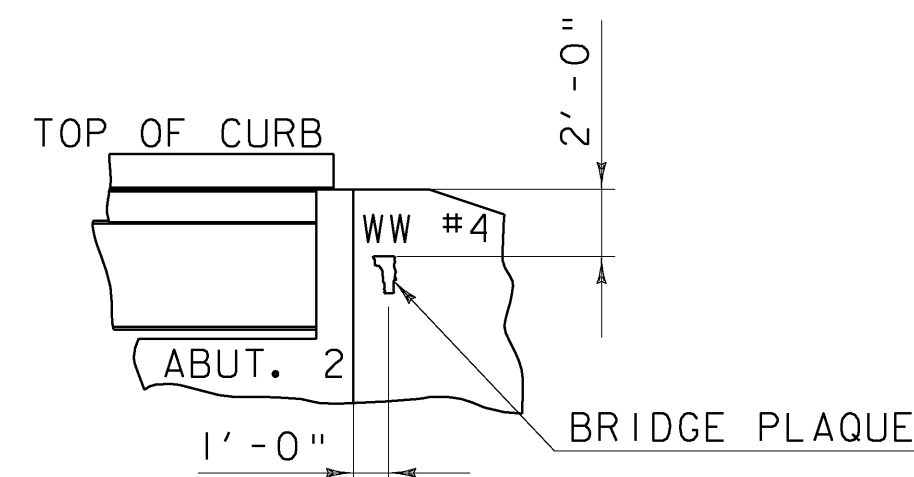
SCORE MARK DETAIL
NOT TO SCALE



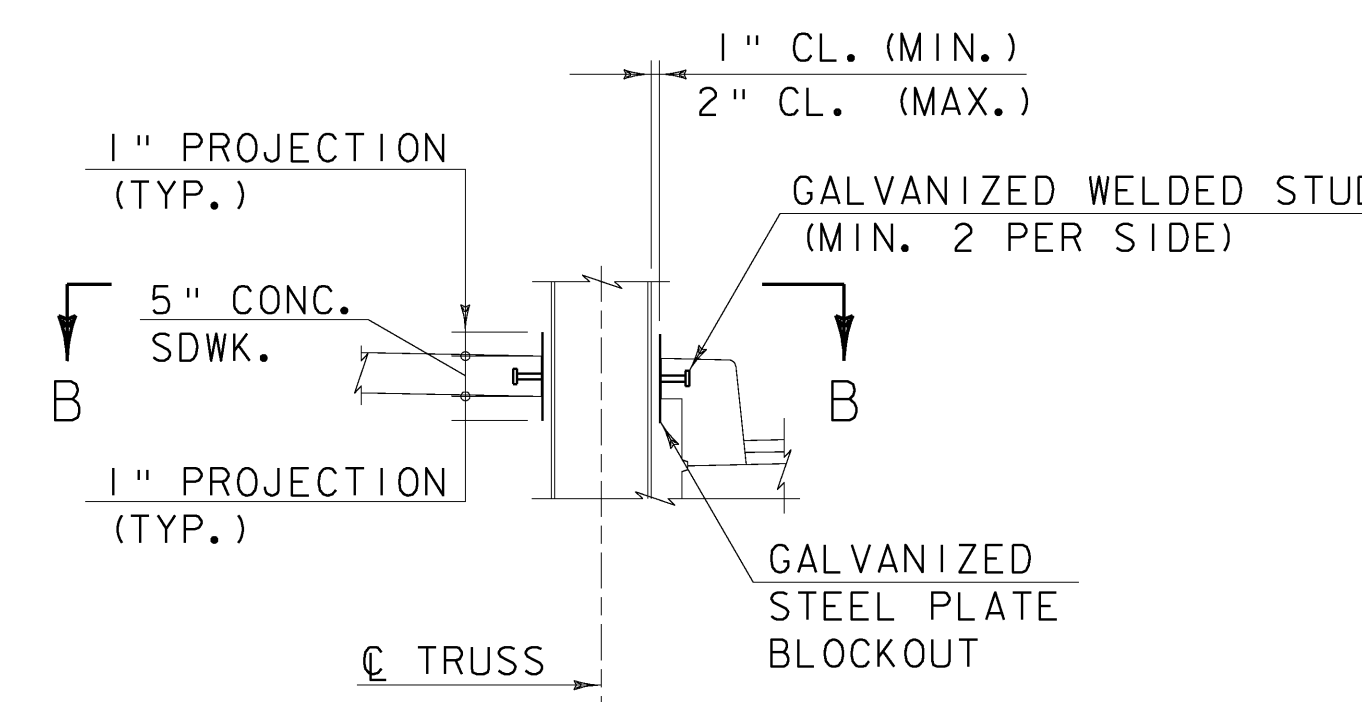
SECTION F-F
SCALE 3/4" = 1'-0"



BRIDGE PLAQUE
NOT TO SCALE

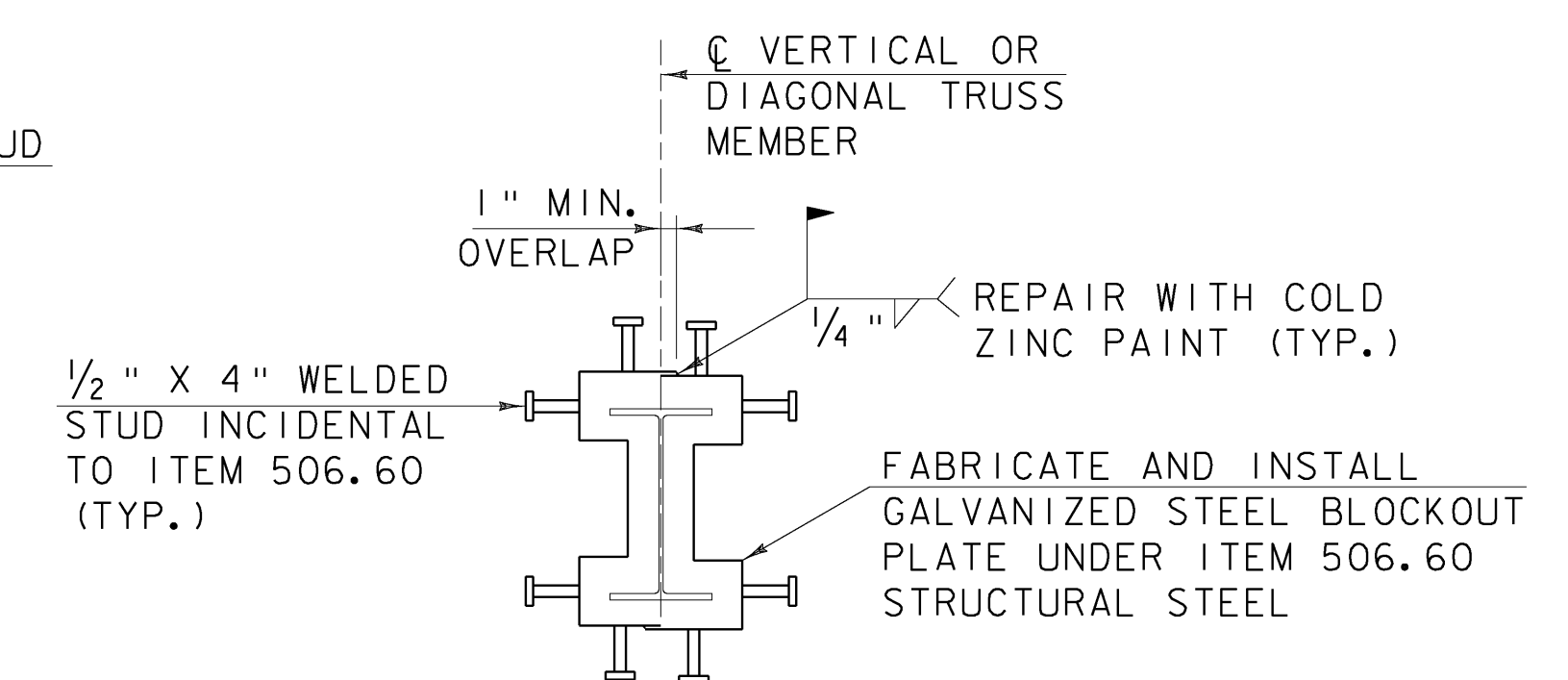


SECTION C-C
NOT TO SCALE



**SIDEWALK BLOCKOUT DETAIL
AT TRUSS MEMBERS**

SCALE 1/2" = 1'-0"



SECTION B-B

SCALE 1" = 1'-0"

MISCELLANEOUS DETAILS

NOTES:

- CONSTRUCTION JOINTS THROUGH CONCRETE CURBS SHALL BE SPACED MAXIMUM 15'-0" CENTER TO CENTER. CONCRETE SHALL BE PLACED IN ALTERNATING SECTIONS WITH A MINIMUM OF 48 HOURS DELAY BETWEEN ADJACENT POURS. THE CONTRACTOR HAS THE OPTION TO ELIMINATE THE CURB JOINTS AND MAKE EACH CURB IN ONE PLACEMENT USING AN APPROVED SHRINKAGE ADMIXTURE AS NOTED IN THE SPECIAL PROVISIONS. THE COST OF ANY SUCH ADMIXTURE SHALL BE INCIDENTAL TO THE CONCRETE ITEM.
- LONGITUDINAL REINFORCING SHALL PASS THROUGH CONCRETE CURB CONSTRUCTION JOINTS.
- CONSTRUCTION JOINTS THROUGH SIDEWALKS SHALL BE SIMILAR TO CONCRETE CURB CONSTRUCTION JOINTS.
- SEE SHT. 28 FOR LOCATIONS OF DETAILS A, B AND C. SEE SHEET 39 FOR LOCATION OF SECTION F.
- ES504 AND ES505 TO BE PLACED IN THE SAME HORIZONTAL PLANE. ES502 AND ES508 TO BE PLACED ON TOP.
- WATERSTOP MATERIAL SHALL BE IN ACCORDANCE WITH STANDARD SPECIFICATION SUBSECTION 707.10. WATERSTOP SYSTEM SHALL BE APPROVED BY THE VERMONT AGENCY OF TRANSPORTATION MATERIALS AND RESEARCH LABORATORY. THE COSTS FOR P.V.C. WATERSTOP SHALL BE INCLUDED IN THE UNIT BID PRICE FOR CONCRETE. OTHER CONFIGURATIONS MAY BE USED UPON APPROVAL OF THE STRUCTURES ENGINEER.
- SAWCUT VERTICAL SLOT IN EXISTING WINGWALL. SLOT SHALL BEGIN 2" ABOVE CUT LINE AND END 2" BELOW THE TOP OF THE EXISTING WINGWALL. INSERT WATERSTOP IN SLOT AND PACK SLOT WITH ADHESIVE APPROVED BY WATERSTOP MANUFACTURER.
- THE BRIDGE PLAQUE WILL BE SUPPLIED BY THE AGENCY OF TRANSPORTATION AND SHALL BE INSTALLED BY THE CONTRACTOR AT ABUTMENT #2 ON WINGWALL #4 AS SHOWN OR AS DIRECTED BY THE ENGINEER.
- PAYMENT FOR INSTALLATION OF THE BRIDGE PLAQUE SHALL BE INCIDENTAL TO THE ADJACENT CONCRETE.