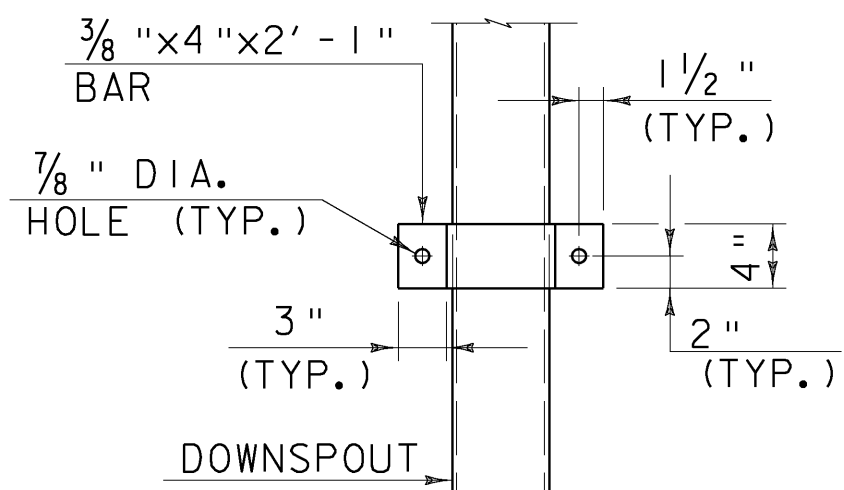
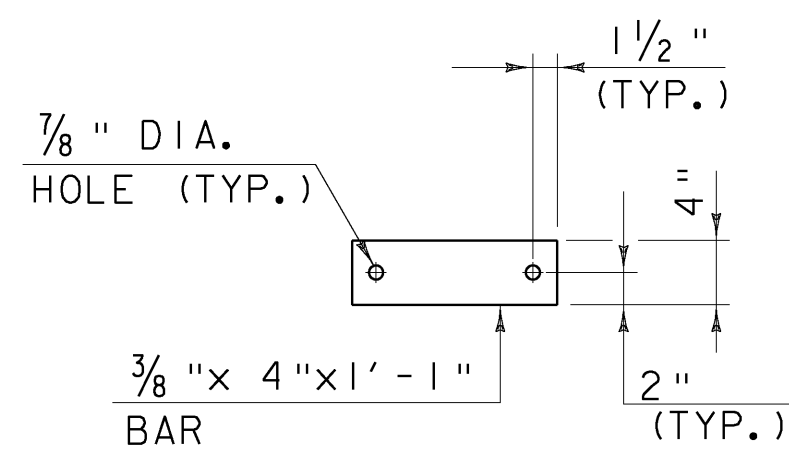


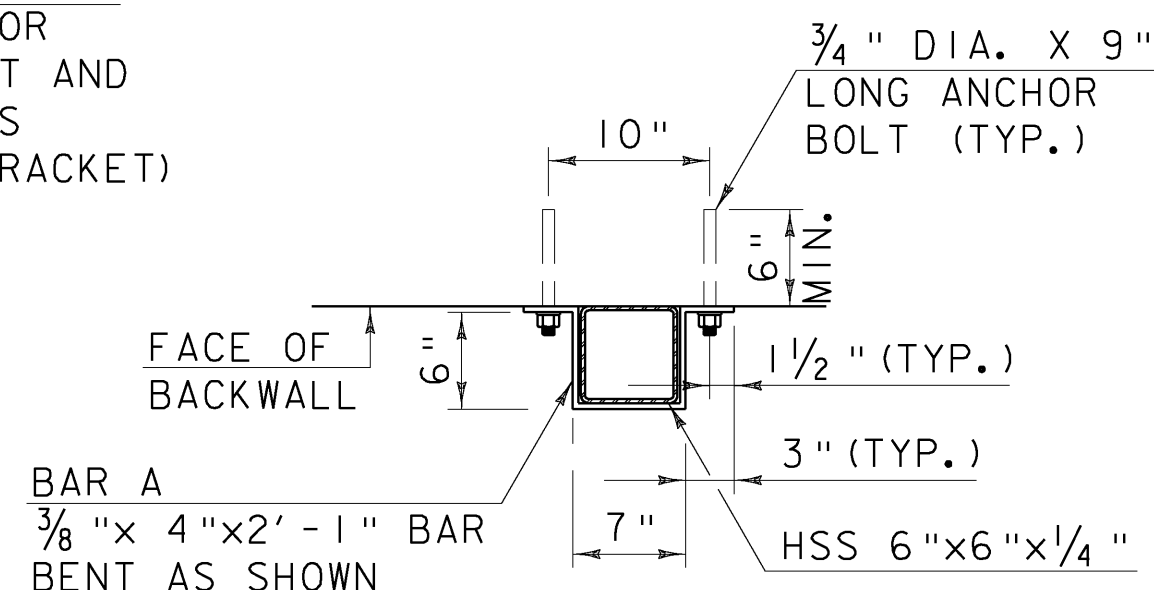
**SECTION F-F**  
(SEE SHT. 33)  
SCALE 3/4" = 1'-0"



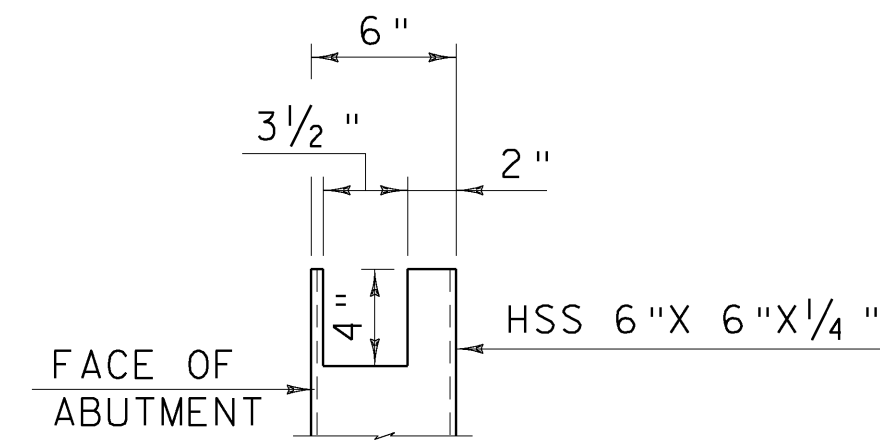
**BAR A DETAIL**  
SCALE 1" = 1'-0"



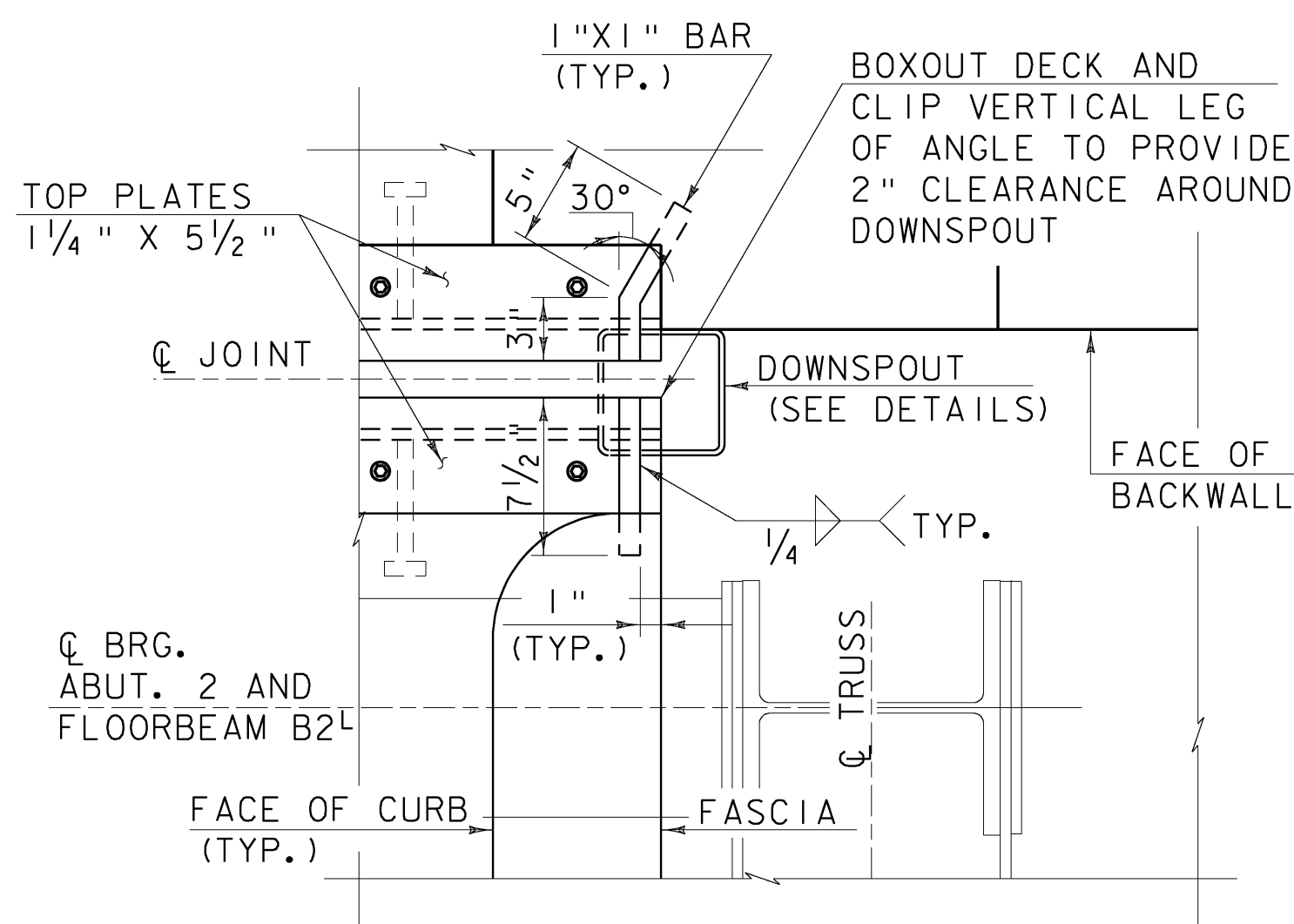
**BAR B DETAIL**  
SCALE 1" = 1'-0"



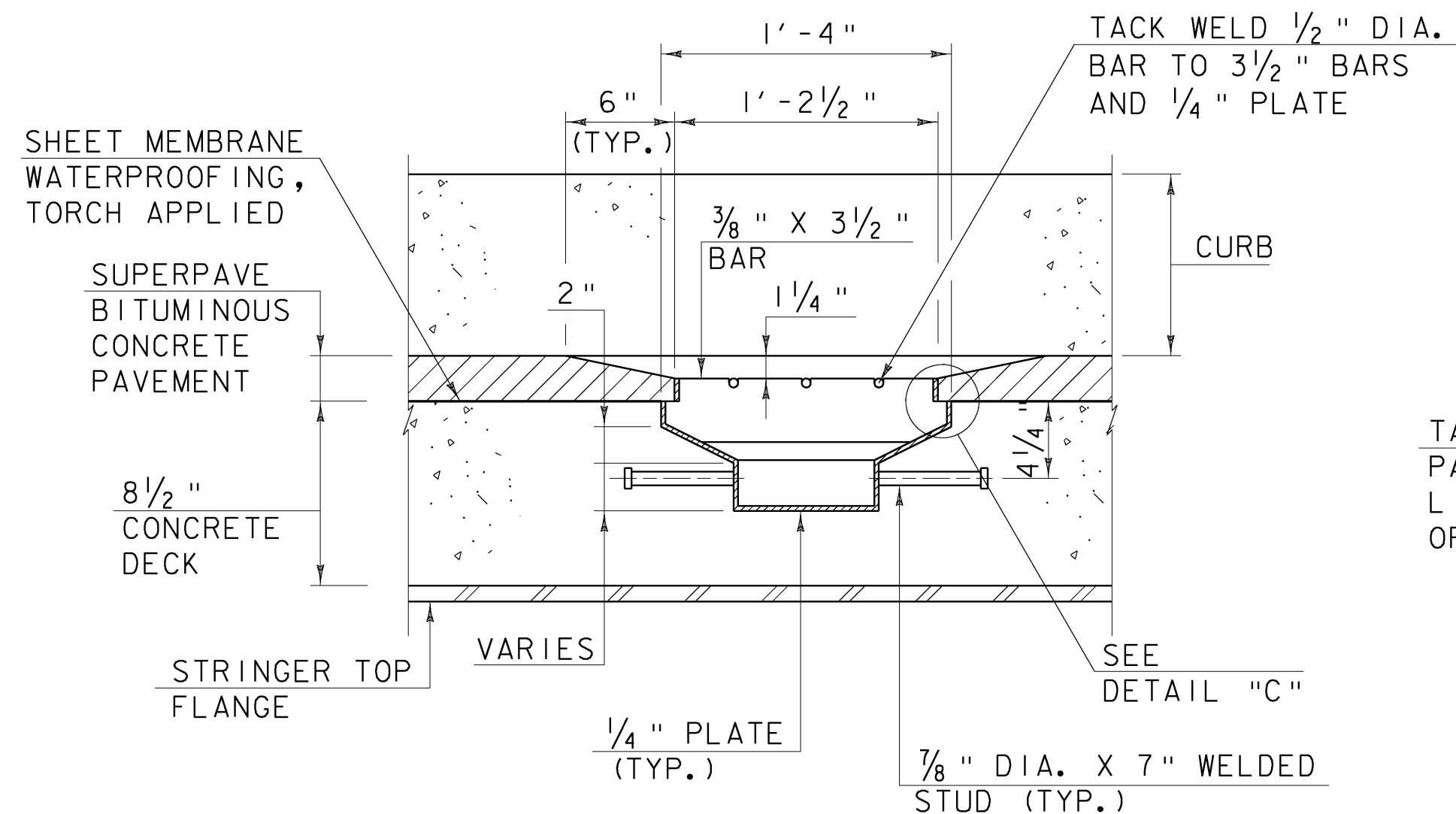
**DOWNSPOUT ATTACHMENT DETAIL**  
SCALE 1" = 1'-0"



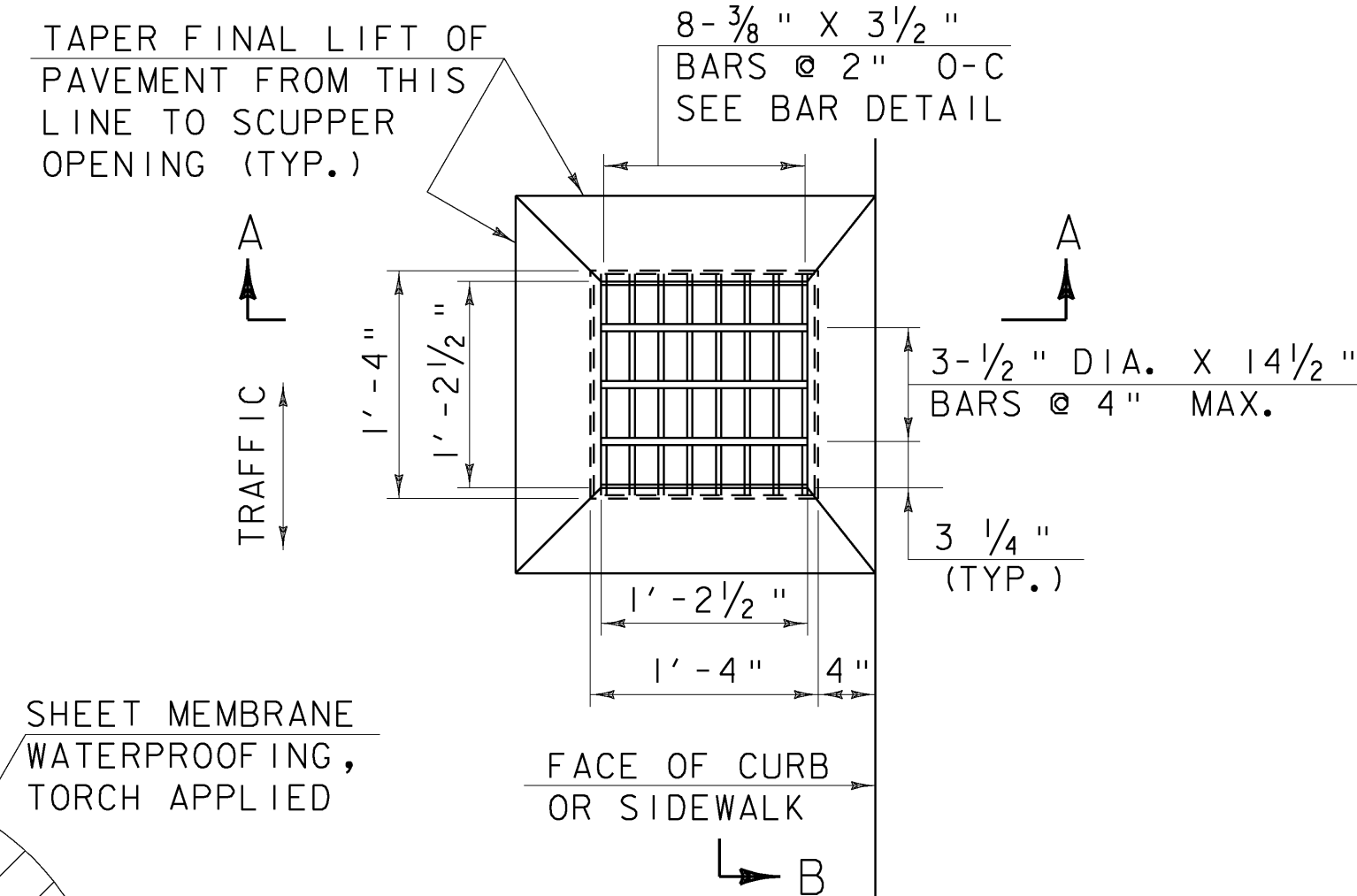
**DOWNSPOUT CUTOUT DETAIL**  
SCALE 1/2" = 1'-0"



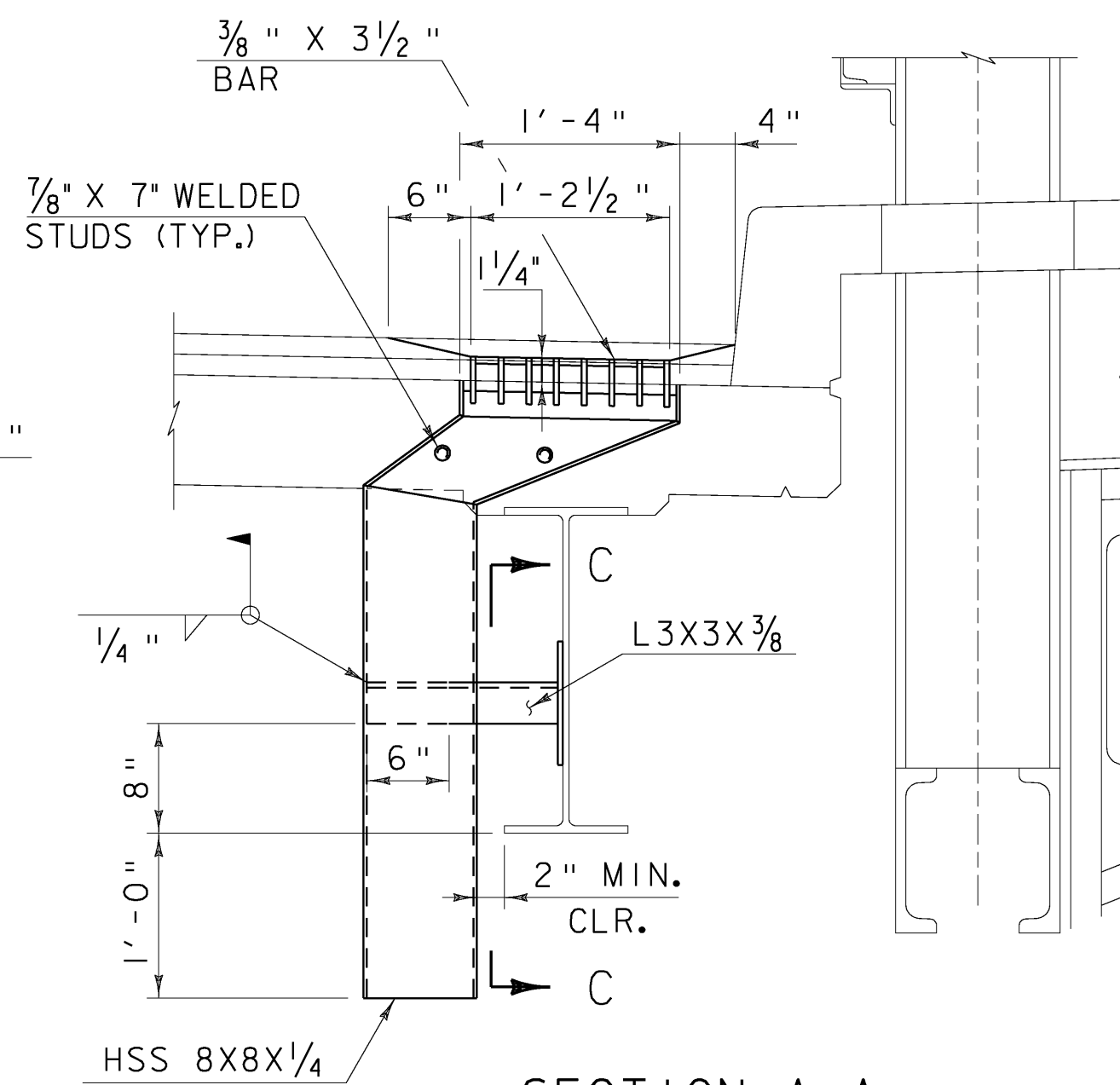
**DETAIL B**  
SCALE 1/2" = 1'-0"



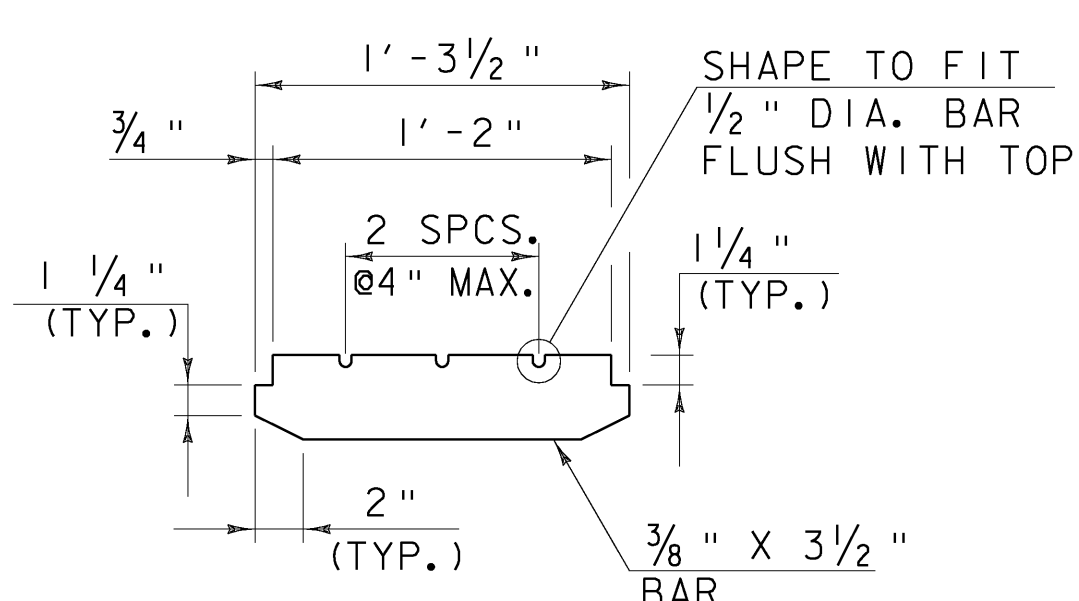
**SECTION B-B**  
SCALE 1/2" = 1'-0"



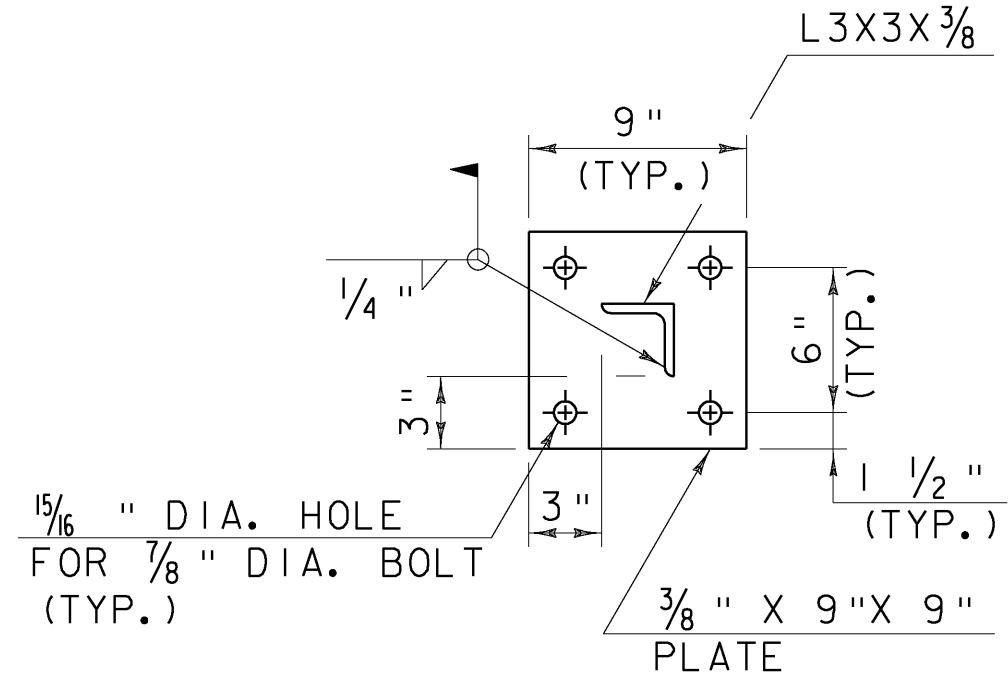
**SCUPPER PLAN**  
SCALE 1" = 1'-0"



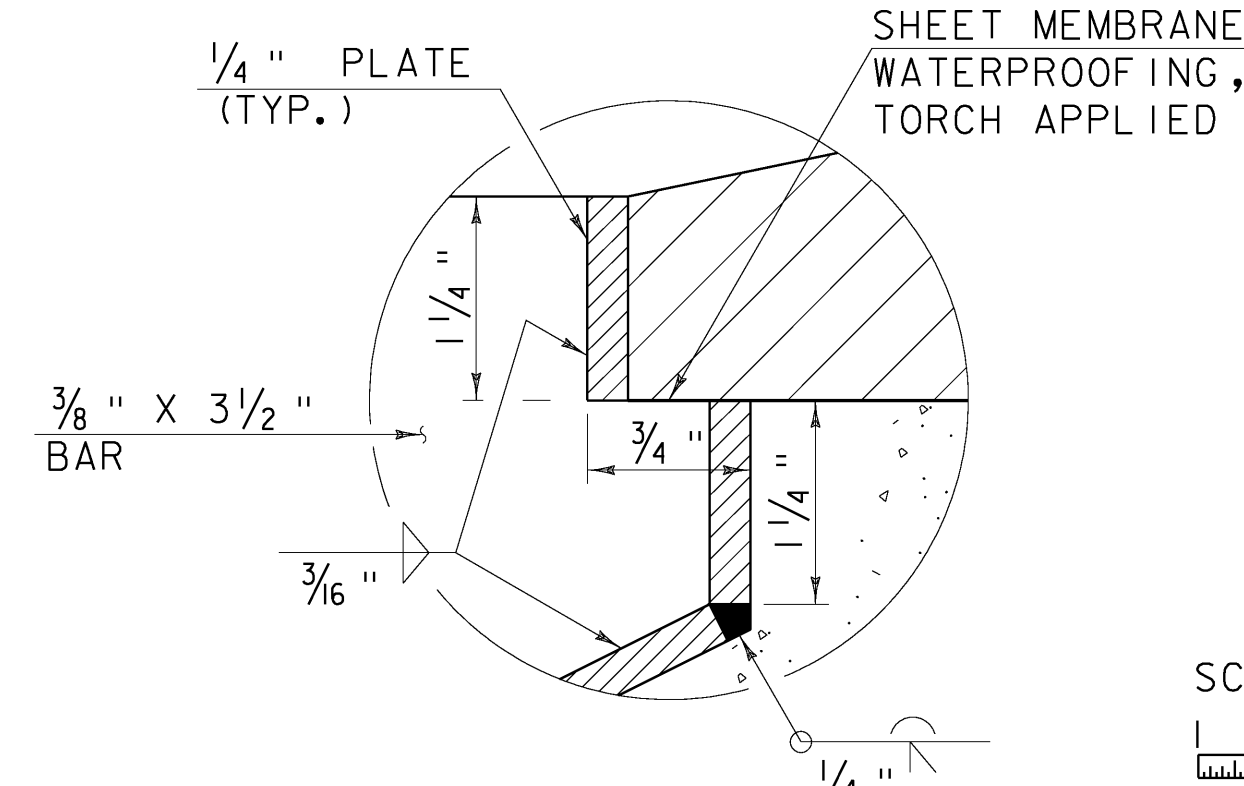
**SECTION A-A**  
SCALE 1" = 1'-0"



**BAR DETAIL FOR GRATE**  
SCALE 1/2" = 1'-0"



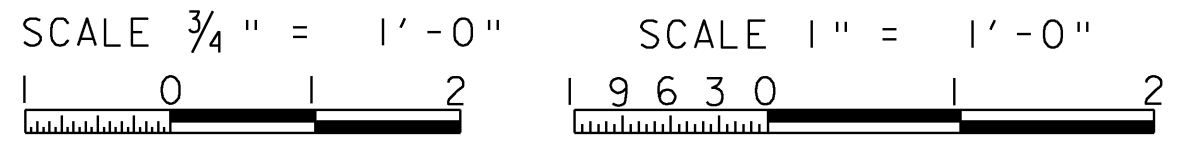
**SECTION C-C**  
SCALE 1/2" = 1'-0"



**DETAIL C**  
NOT TO SCALE

**SCUPPER AND DOWNSPOUT NOTES:**

- HOLLOW STRUCTURAL STEEL TUBING SHALL CONFORM TO THE REQUIREMENTS OF SUBSECTION 714.11.
- ALL PLATES, BARS, AND ANGLES SHALL CONFORM TO THE REQUIREMENTS OF SUBSECTION 714.02.
- DOWNSPOUTS SHALL BE GALVANIZED IN ACCORDANCE WITH ASTM A123 AFTER FABRICATION.
- ALL BOLTS AND RELATED HARDWARE SHALL CONFORM TO THE REQUIREMENTS OF SUBSECTION 714.04 AND SHALL BE GALVANIZED IN ACCORDANCE WITH SUBSECTION 506.15.
- IN AREAS WHERE THE GALVANIZING HAS BEEN REMOVED FROM THE SCUPPERS AND DOWNSPOUTS EITHER BY CUTTING, BURNING, WELDING, PLACING, OR ANY OTHER MEANS, IT SHALL BE REPAIRED BY THOROUGHLY CLEANING THE DAMAGED AREAS WITH A WIRE BRUSH AND PAINTING THE DAMAGED AREAS WITH TWO COATS OF A SEALANT APPROVED BY THE VERMONT AGENCY OF TRANSPORTATION MATERIALS AND RESEARCH LABORATORY.
- AN EPOXY BONDING COMPOUND, APPROVED BY THE VERMONT AGENCY OF TRANSPORTATION MATERIALS AND RESEARCH LABORATORY, SHALL BE PLACED BETWEEN DECK CONCRETE AND SCUPPER/DOWNSPOUT HARDWARE.
- THE SCUPPER BAR AND GRATE MAY BE PREFABRICATED PROVIDING THE GEOMETRY AND SECTION PROPERTIES ARE EQUIVALENT TO THE DETAILS SHOWN.
- ALL REQUIRED WELDS FOR SCUPPERS AND DOWNSPOUTS SHALL BE DETAILED ON FABRICATION DRAWINGS WHICH SHALL ALSO INCLUDE ALL APPLICABLE WELDING PROCEDURES.
- THE TOP SURFACE OF THE SCUPPER SHALL BE ADJUSTED TO MATCH THE ROADWAY SLOPE AND GRADE.
- AFTER ALL PAVING AND CONCRETING OPERATIONS THE SCUPPERS AND DOWNSPOUTS SHALL BE CLEANED OF ALL CONTAMINATION BY FLUSHING.
- ALL MATERIALS AND INSTALLATION COSTS FOR THE SCUPPERS AND DOWNSPOUTS, INCLUDING STEEL TUBING, RELATED HARDWARE, AND ANCHOR BOLTS SHALL BE PAID FOR UNDER ITEM 506.50 STRUCTURAL STEEL, ROLLED BEAM.



**SCUPPER AND DOWNSPOUT DETAILS**

PROJECT NAME: MONTPELIER	FILE NAME: \$FILES\$	PLOT DATE: 10/12/2009
PROJECT NUMBER: BHF 6400(31)	PROJECT MANAGER: SUSAN SCRIBNER	DRAWN BY: D. D'AMATO
	DESIGNED BY: D. D'AMATO	CHECKED BY: P. PERKINS
	BRIDGE DESIGN SUPERVISOR: P. HALSTEAD	SHEET 35 OF 63

