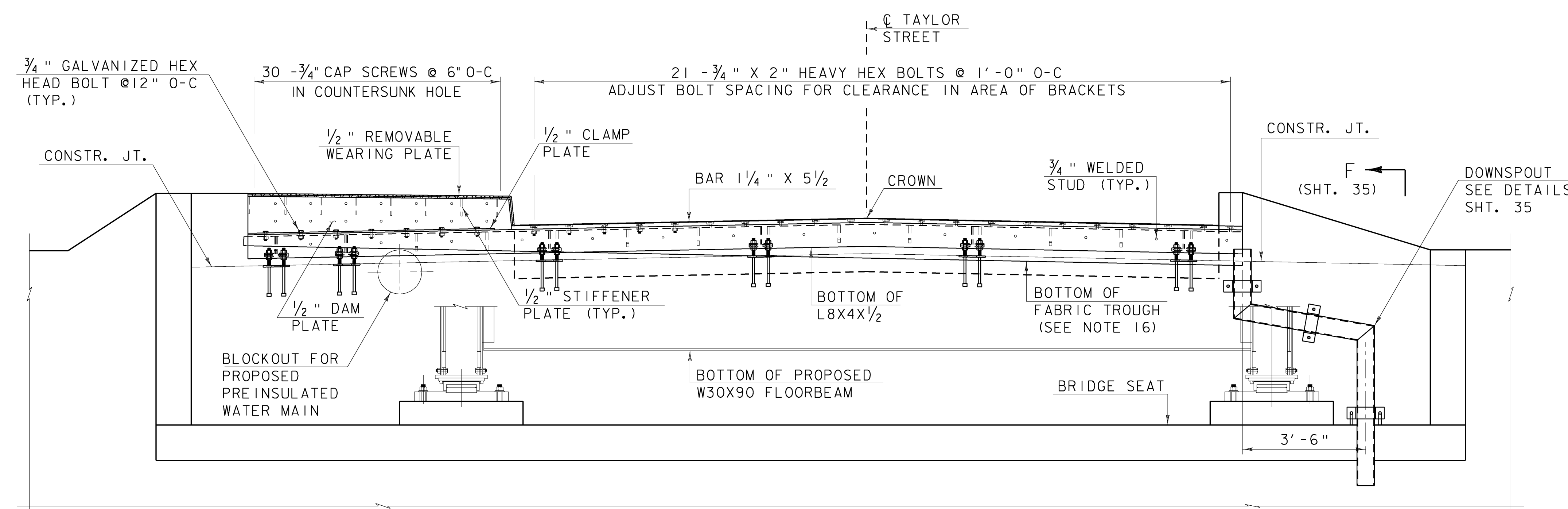
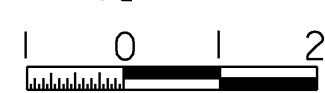


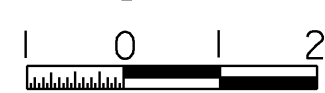
EXPANSION JOINT PLAN AT ABUTMENT 2

SCALE 1/2" = 1'-0"



SECTION A-A

SCALE 1/2" = 1'-0"



EXPANSION JOINT NOTES:

1. DETAILS ON SHTS. 33 AND 34 ARE FOR ITEM 516.11 BRIDGE EXPANSION JOINT, VERMONT.
2. PREFORMED FABRIC MATERIAL SHALL BE CONTINUOUS FOR THE FULL LENGTH OF THE JOINT.
3. THE FINAL FINISH OF THE EXPANSION DEVICE SHALL BE COVERED DURING THE PLACING OF BRIDGE DECK CONCRETE.
4. ALL STEEL COMPONENTS SHALL BE GALVANIZED OR METALIZED AND MEET THE REQUIREMENTS OF SUBSECTION 516.02. THREADED RODS SHALL CONFORM TO THE REQUIREMENTS OF SUBSECTION 714.04. THE 1/2" X 9" X 8" ANCHOR PLATE AND WELDED STUD ASSEMBLY MAY BE SUPPLIED WITHOUT GALVANIZING OR METALIZING.
5. ITEM 516.11 BRIDGE EXPANSION JOINT, VERMONT SHALL INCLUDE THE FABRICATION AND ERECTION OF THE COMPLETE JOINT ASSEMBLY INCLUDING ALL STEEL PLATES, BRACKETS, ANGLES, WELDED STUDS OR RODS, PREFORMED FABRIC DRAIN TROUGH MATERIAL AND PLASTIC DRAIN TUBES, BUTYL RUBBER TAPE AND ANY OTHER MISCELLANEOUS MATERIAL NECESSARY TO INSTALL JOINT.
6. THE L4X8X1/2 ANGLES SHALL BE FURNISHED AS ONE CONTINUOUS PIECE. THE 1/4" X 5 1/2" BARS EACH SIDE OF THE JOINT SHALL BE PROVIDED IN CONTINUOUS LENGTHS AS SHOWN ON THE PLANS.
7. FILL COUNTERBORED HOLES WITH HOT POURED JOINT SEALER (STANDARD SPECIFICATION SUBSECTION 707.04) AFTER BOLT INSTALLATION. PAYMENT FOR THE WORK SHALL BE INCIDENTAL TO ITEM 516.11 BRIDGE EXPANSION JOINT, VERMONT.
8. A 1" DIAMETER PLASTIC DRAIN TUBE (PER STANDARD SPECIFICATION SUBSECTION 740.01) SHALL BE INSTALLED AS SHOWN AT THE FACE OF CURB. THE UPPER END IS TO BE PLUGGED WITH STEEL WOOL AND THE LOWER END IS TO EXTEND BELOW THE BOTTOM OF THE TRUSS BOTTOM CHORD. THE DRAIN TUBES SHALL BE FASTENED TO THE BOTTOM CHORD USING A METHOD APPROVED BY THE RESIDENT ENGINEER. PAYMENT INCIDENTAL TO ITEM 501.34.
9. THE EXPANSION JOINT SHALL BE SHOP ASSEMBLED AND SHIPPED AS ONE UNIT.
10. THE COST FOR P.V.C. WATERSTOP SHALL BE INCLUDED IN THE UNIT BID PRICE FOR ITEM 501.34, CONCRETE, HIGH PERFORMANCE CLASS B. OTHER CONFIGURATIONS MAY BE USED UPON APPROVAL BY THE STRUCTURES ENGINEER.
11. A DRIP BEAD OF 1/4" X 7" STRIP OF PREFORMED MATERIAL SHALL BE CEMENTED TO THE BOTTOM OF THE FABRIC TROUGH USING AN ADHESIVE APPROVED BY THE MANUFACTURER. THE DRIP BEAD SHALL BE APPLIED 1" FROM THE DOWNSPOUT END OF THE TROUGH.
12. FABRIC TROUGH SHALL BE THOROUGHLY CLEANED AND FLUSHED AFTER PAVING OPERATION.
13. PRIOR TO GALVANIZING OR METALIZING, ALL CORNERS AND EDGES OF STEEL PLATES, SHAPES, ETC., SHALL BE GROUND TO A 1/16" RADIUS.
14. TEMPORARY SHIPPING ATTACHMENTS SHALL BE ATTACHED BY BOLTING. WELDING WILL NOT BE PERMITTED.
15. PROJECTING THREADS OF THE 3/4" BOLTS IN THE JOINT SHALL BE GREASED BY THE CONTRACTOR PRIOR TO PLACING ADJACENT CONCRETE. THIS WILL FACILITATE BOLT REMOVAL IF REQUIRED IN THE FUTURE.
16. SLOPE FABRIC DRAIN TROUGH 2% MIN. ALONG TROUGH TOWARDS DOWNSPOUT CONTINUOUSLY FROM THE BACK OF THE SIDEWALK. THE CONTRACTOR SHALL INCLUDE A FABRIC TROUGH PLAN IN THE FABRICATION DRAWINGS FOR SUBMITTAL TO THE STRUCTURES ENGINEER.
17. AN EPOXY BONDING COMPOUND, APPROVED BY THE VERMONT AGENCY OF TRANSPORTATION MATERIALS AND RESEARCH LABORATORY, SHALL BE PLACED BETWEEN THE DECK CONCRETE AND THE JOINT HARDWARE.

EXPANSION JOINT PLAN

PROJECT NAME: MONTPELIER  
PROJECT NUMBER: BHF 6400(31)

FILE NAME: \$FILES\$  
PROJECT MANAGER: SUSAN SCRIBNER  
DESIGNED BY: D. D'AMATO  
BRIDGE DESIGN SUPERVISOR: P. HALSTEAD

PLOT DATE: 10/12/2009  
DRAWN BY: D. D'AMATO  
CHECKED BY: P. PERKINS  
SHEET 33 OF 63

