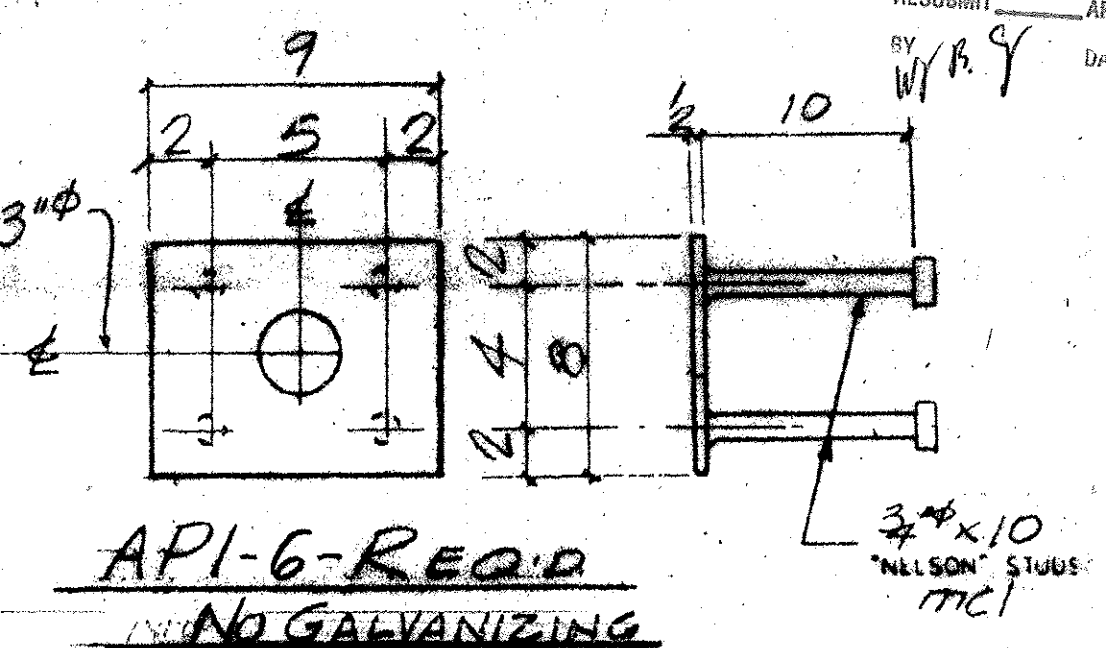
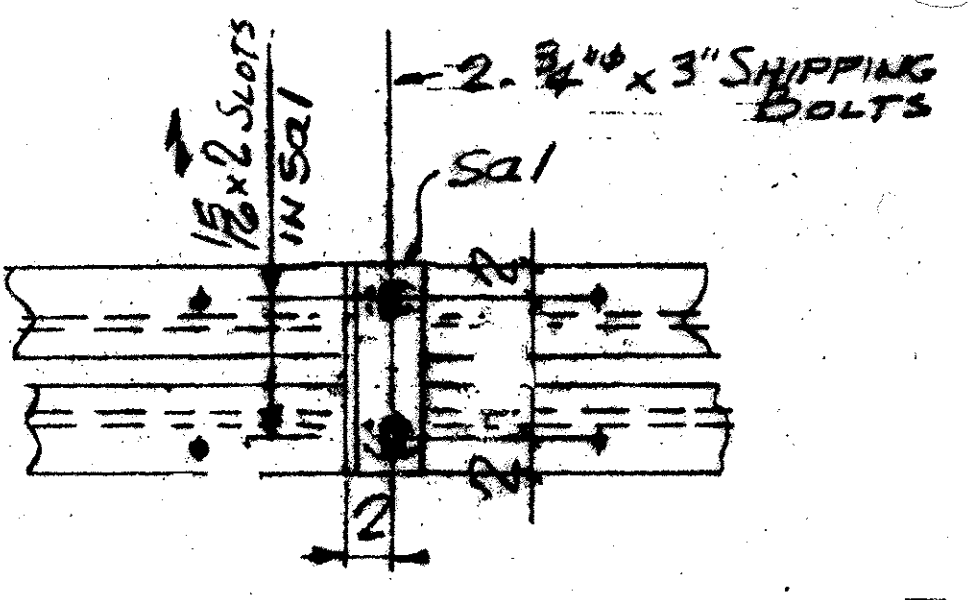


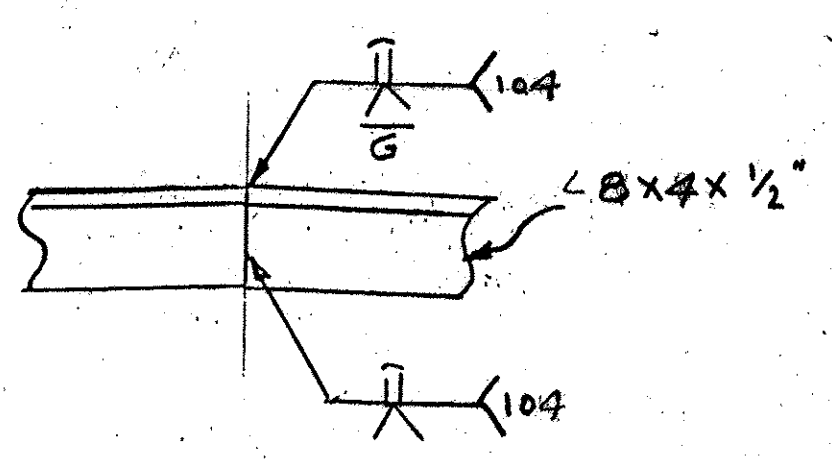
WASHER FOR BRACKET W1



WORK THIS DWG. WITH DWG. J2  
PRIOR TO GALV. GRIND ALL EDGES & CORNERS TO 1/16" RADIUS.



SHIPPING DEVICE SPACED 5'-0" O.C. MAX.



WELDING DETAIL

SHOP BILL				JOB NO. 434	DRG. NO. J1				
PAGE	LINE	NO.	DESCRIPTION	FT	IN	ASSEMBLY MARK	SHIPPING MARK	REMARKS	WEIGHT
	1		Exp. Joint	28	3 1/2		EJ1		
	1		L-8x4x1/2	17	6 1/8	aa1R			
	1		DO	10	8	aa2R			
	1		DO	10	8	aa2L			
	2		BAR 5x1/4	10	1	b1R			
	2		DO	10	8	b2R			
	4		R 1/2 x 6	1	0	ba			
	6		DO	1	0	bb			
	2		DO	1	2	bc			
	4		R 1/2 x 8	1	0	ba			
	6		DO	1	0	bb			
	2		DO	1	2	bc			
	42		3/4" PH HEX BOLTS	28		aa1		STPS SPEC SUBJECT 714.05	
	48		3/4" ANK STUDS	10		mc1			
	1		BAR 1x1	8		bb1		BEND	
	1		1" DIA. BENT STUDS	30		bb2		STPS SPEC SUBJECT 714.07	
	2		1" DIA. STRAIGHT STUDS	30		mc1		STPS SPEC SUBJECT 714.02	
TS1	40		1" DIA. BENT STUDS	7		TS1		SUBJECT 714.05	
TS2	8		DO	1	2	TS2		DO	
96			1" DIA. HEX NUTS			FIELD			
96			R 3/8 x 3	3		W1		R. WASH	
6			R 1/2 x 8	9		API		NO GALV	
	24		3/4" ANK STUDS	10		mc1			
	6		L 4 x 4 x 1/2	1	0	sa1			
	12		3/4" BOLTS	3		SHOP			
SIDEWALK ITEMS - SEE DWG. J2									
	1		R 6 x 11	7		5/8 SPI			
	1		R 1/2 x 7/4	11		5/8 SPI			
	2		R 1/2 x 5	7		5/8 SPI			
	2		DO			5/8 SPI			
	2		R 1/2 x 1 1/2	7		5/8 SPI			
	8		R 1/2 x 3	4		SPD			
	2		BAR 3 x 1/2	7		CDL			
	12		3/4" ANK STUDS	10		mc1			
	15		3/4" CAP SCREWS	1/2		mb1		STAINLESS STEEL	
	16		3/4" A325	22		SHOP		W/ GALV.	
PAY ITEM: 516.11									

OUT FOR APPROVAL	1/4/10				
OUT FOR APPROVAL					
ISSUED TO SHOP					
FIELD & OFFICE					

REV.	REMARKS	DATE	DWN	CHK	APP	Q.A.	NO.	DIA.	LGT	TYPE	WASHER
	PROJECT NO. BHF-6400 (31)										
	MATERIAL: A325										
	SURFACE PREP. & PAINT:										A525-GALV.

GALVANIZE AFTER FAB.											
DESCRIPTION:	EXPANSION JOINT - ABUT. 2										
JOB:	TH9-TAYLOR ST. BRIDGE NO. 5										
	MONTPELIER, VERMONT										
CUSTOMER:	WINTERSET										
CASCO BAY STEEL STRUCTURES, INC.	JOB NO.	DRG. NO.									
75 SPRING HILL ROAD	434	J1									
PHONE (207) 282-7380	SACO, MAINE 04072										
	FAX (207) 282-1179										
		REV.									