

GPS CONTROL POINTS

HVCTRL #1

DESIGNATION

"A93010 RESET"

N = 641922.2233
E = 1618150.8910
ELEV. = 520.250

GENERAL LOCATION, MONTPELIER, VT. TO REACH FROM THE INTERSECTION OF U.S. ROUTE 2 AND VT ROUTE 12 IN MONTPELIER GO WEST ALONG U.S. ROUTE 2 FOR 0.4 MI (0.6 KM) TO THE INTERSECTION OF BAILEY AVENUE RIGHT. TURN RIGHT AND GO NORTH ALONG BAILEY AVENUE FOR 0.05 MI (0.08 KM) TO THE SOUTH END OF THE BAILEY AVENUE BRIDGE OVER THE WINOOSKI RIVER AND THE MARK ON THE RIGHT IN THE TOP OF THE ABUTMENT AT THE SOUTHEAST CORNER OF THE BRIDGE. THE MARK IS 0.1 M (0.3 FT) NORTH OF THE SOUTH END OF THE ABUTMENT AND 0.1 M (0.3 FT) WEST OF THE EAST EDGE OF THE ABUTMENT.

HVCTRL #5

DESIGNATION

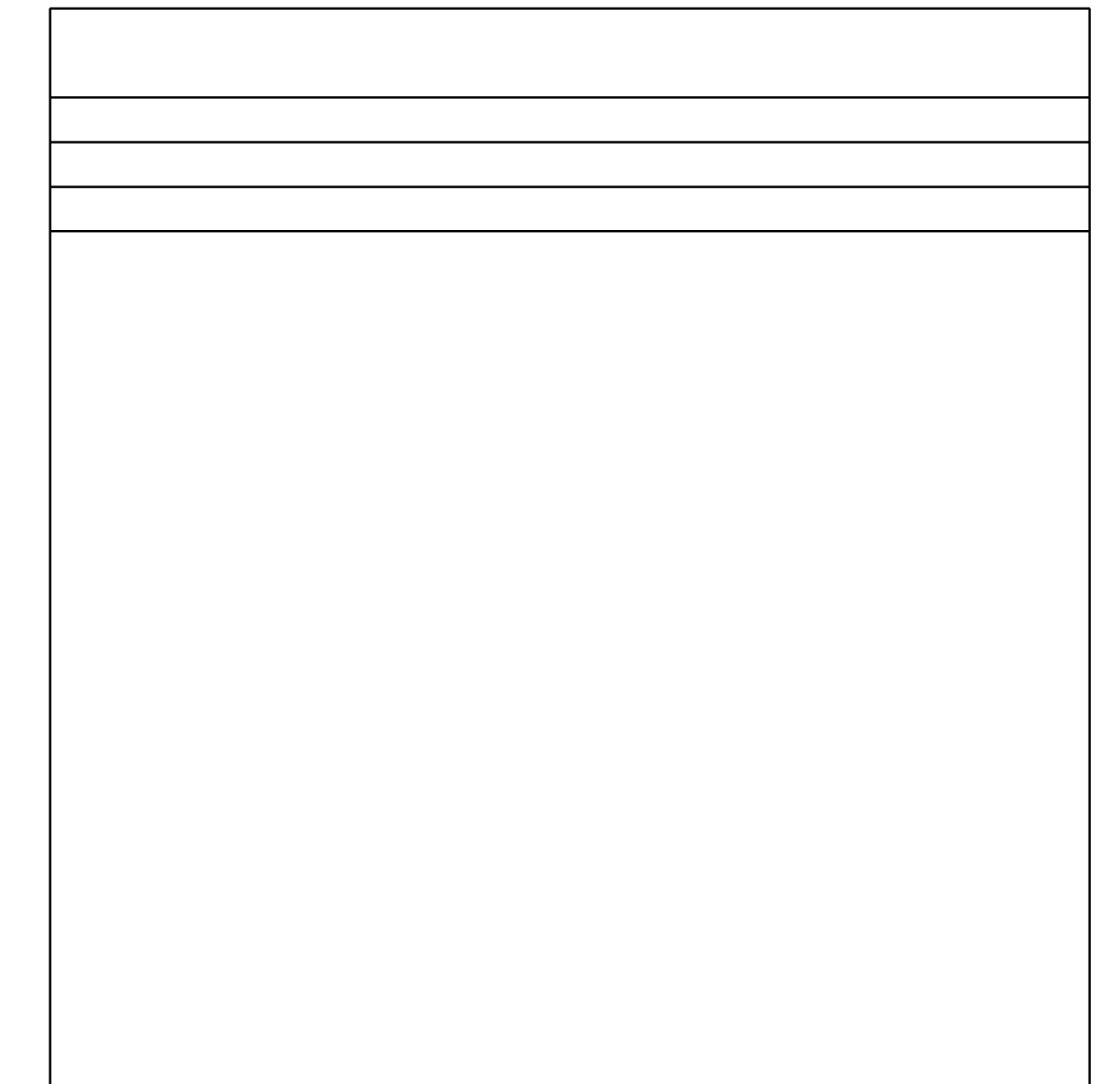
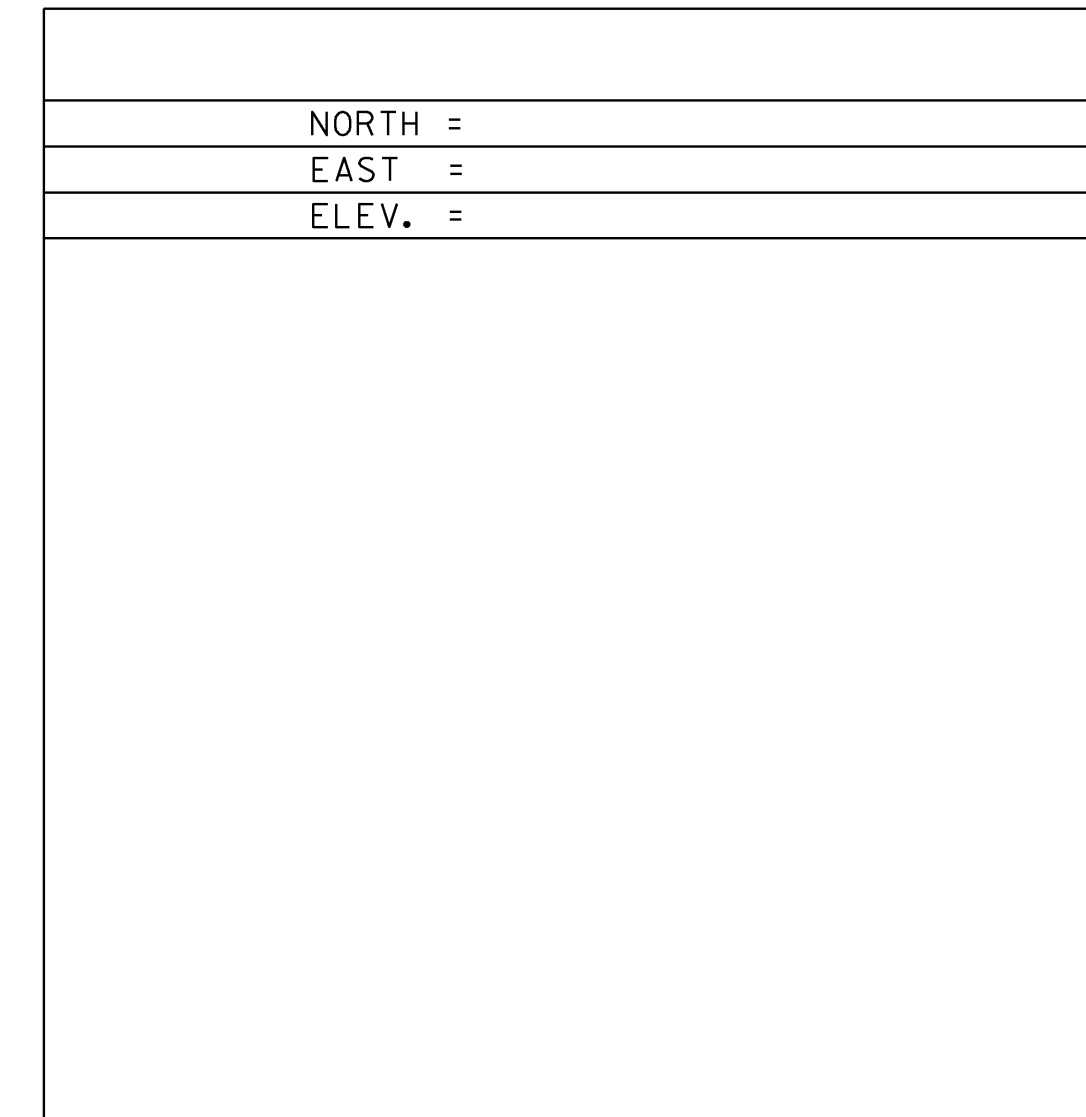
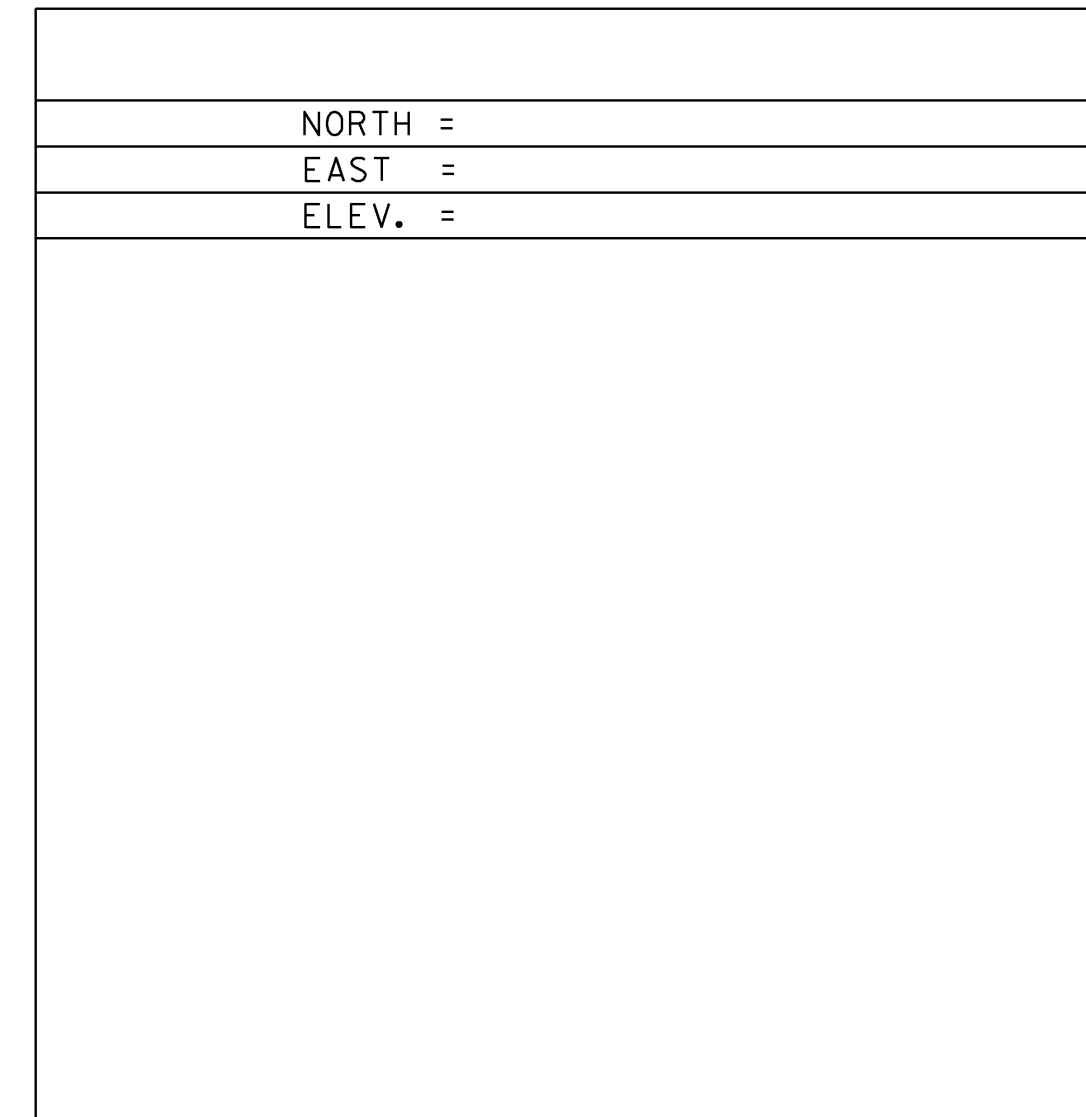
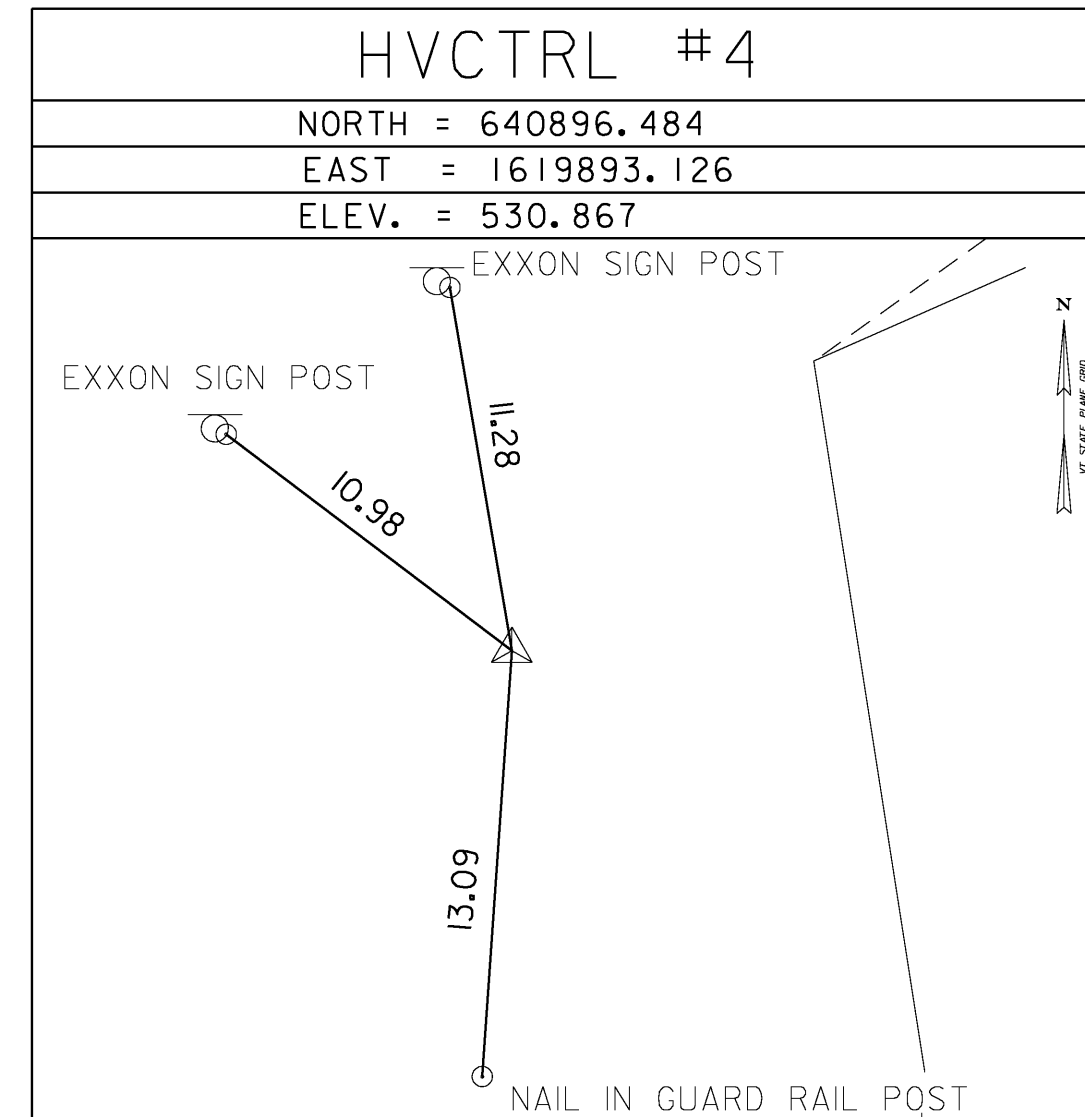
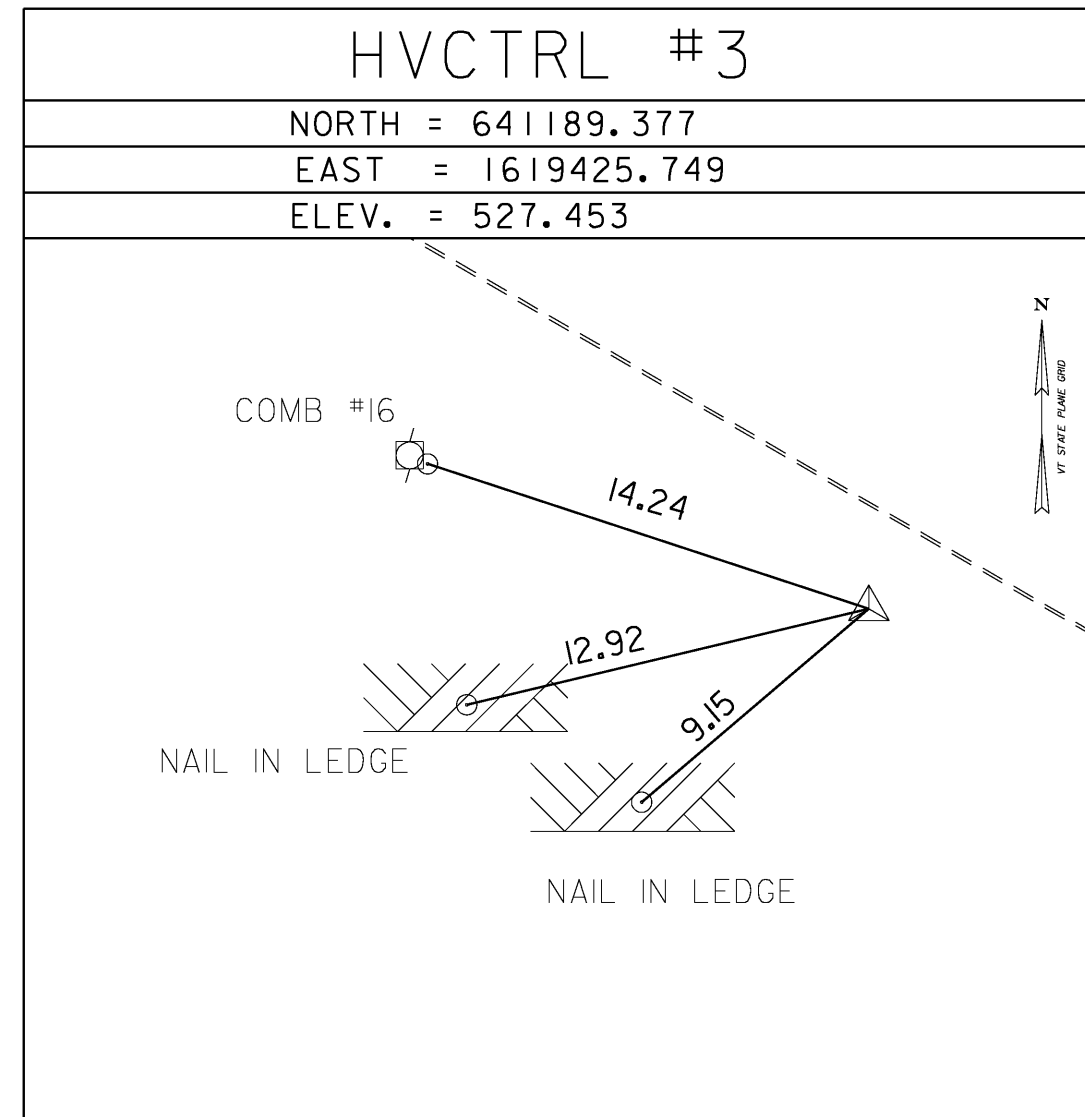
"MAY"

N = 640754.2007
E = 1620031.163
ELEV. = 526.77

GENERAL LOCATION, MONTPELIER, 9 KM (5.60 MI) NORTHWEST OF BARRE, 13 KM (8.05 MI) NORTH NORTHEAST OF NORTHFIELD. THE MARK IS IN THE NORTHEAST QUADRANT OF THE INTERSECTION OF US ROUTE 2 AND MAIN STREET IN MONTPELIER, AND SET IN THE SOUTHEAST END OF A MASSIVE RETAINING WALL. THE STATION IS LOCATED 36.6 FT (11.2 M) (SLOPE) FROM THE SOUTHEAST MOST STEEL GUARDRAIL POST FOR A 3 CABLE STEEL GUARDRAIL, 1.6 FT (0.5 M) SOUTHWEST OF THE SOUTHEAST (RIVER) FACE OF THE RETAINING WALL, AND 1.4 FT (0.4 M) SOUTHEAST OF THE SOUTHWEST FACE OF THE RETAINING WALL.

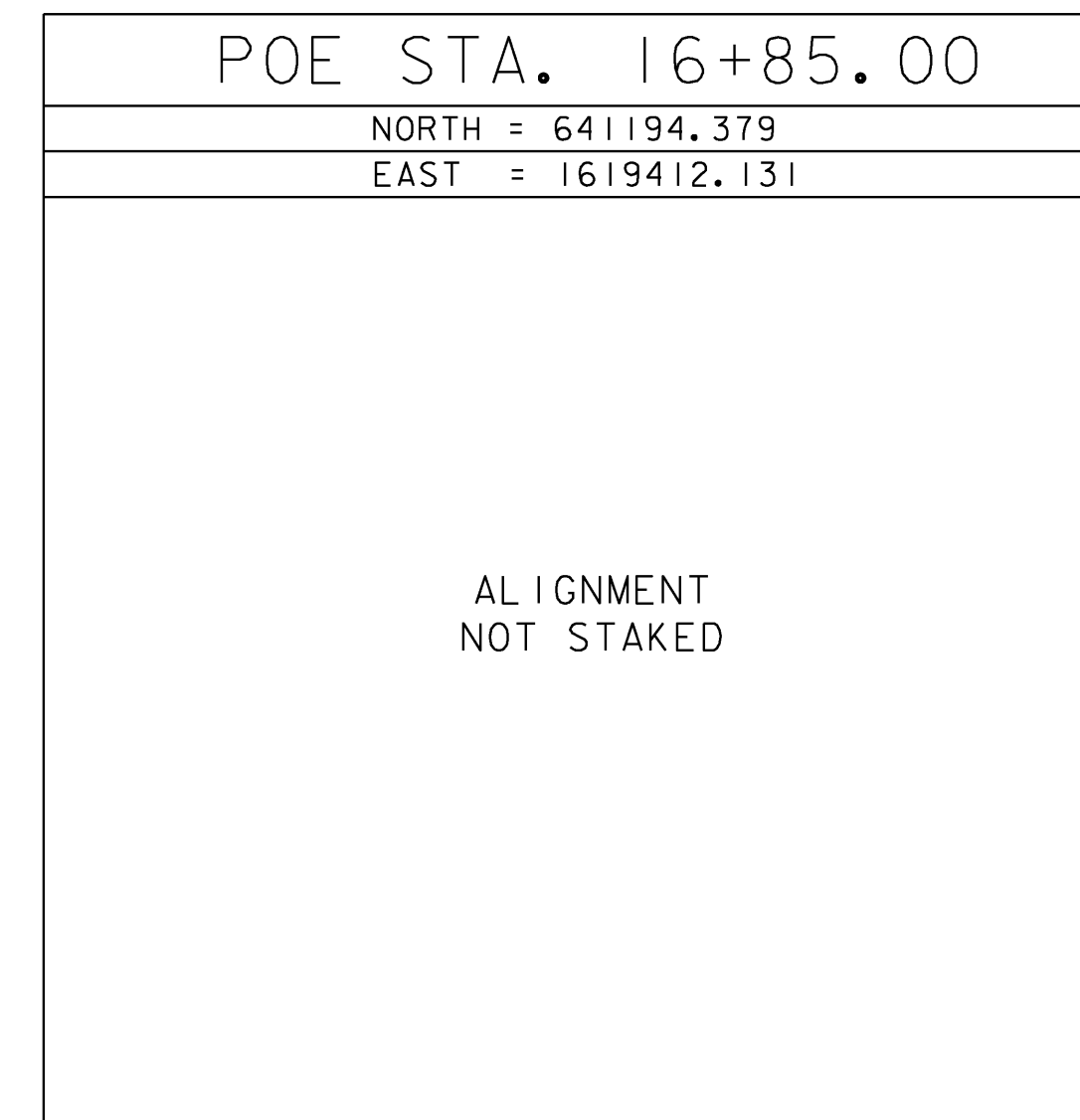
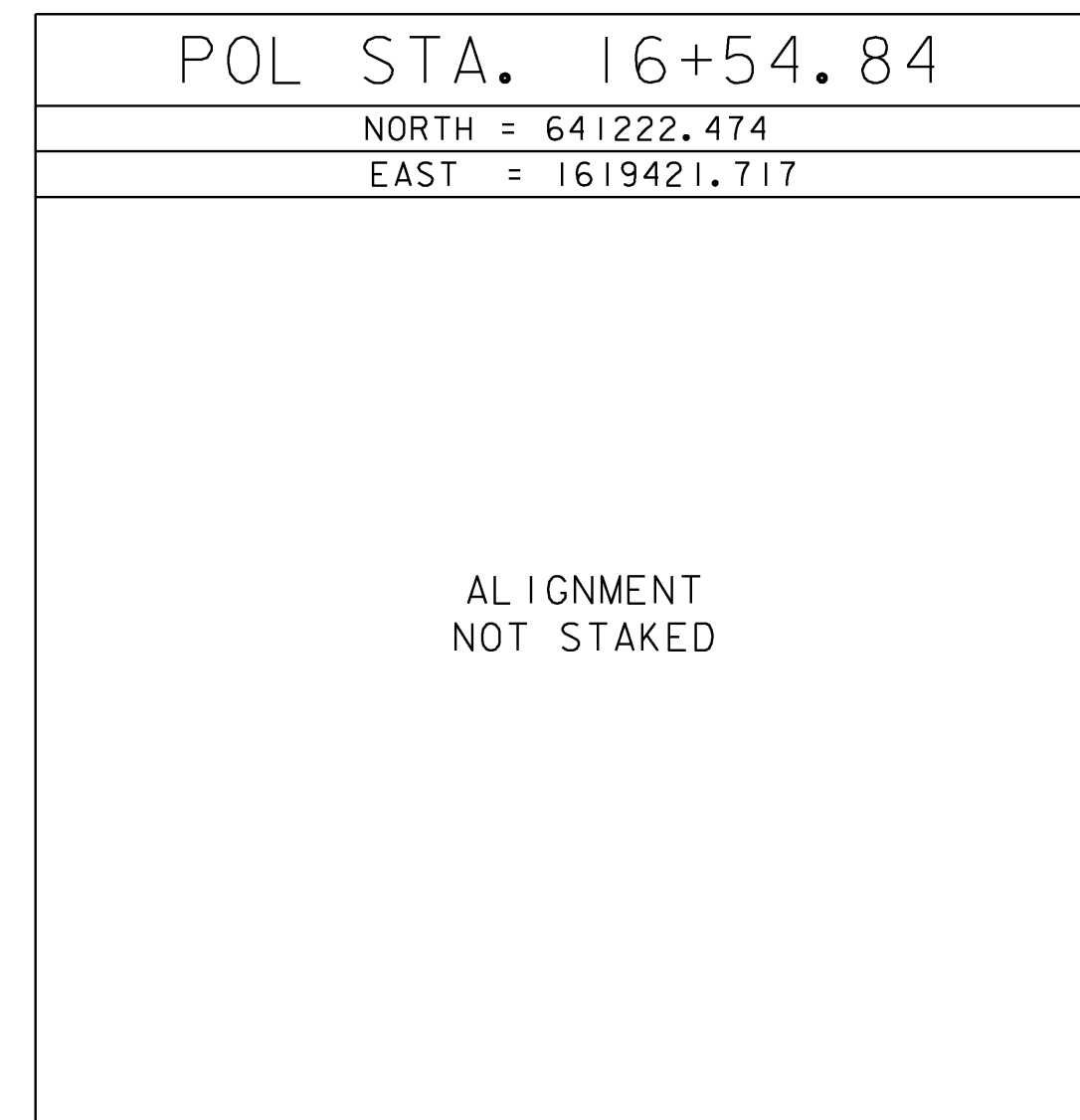
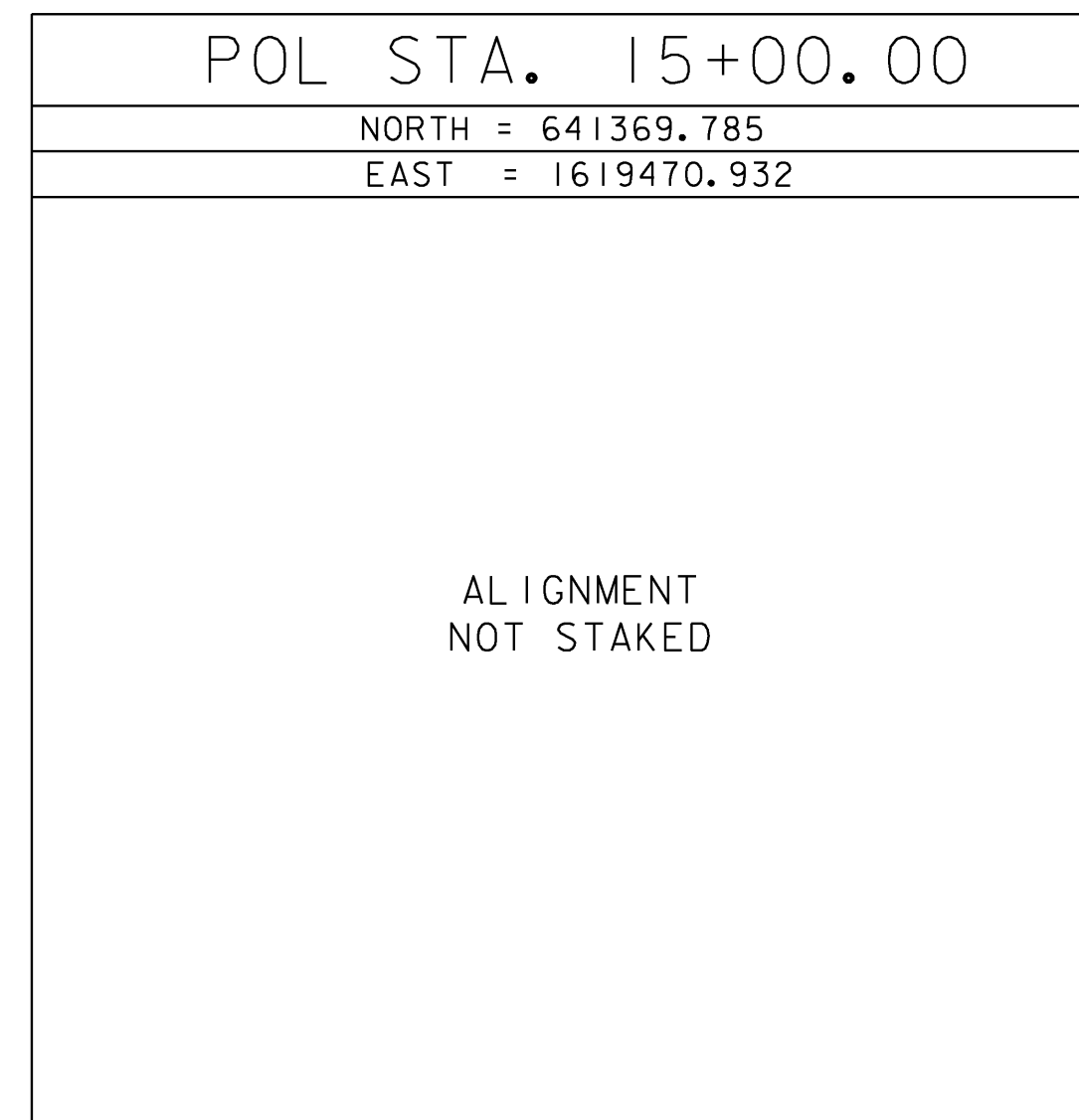
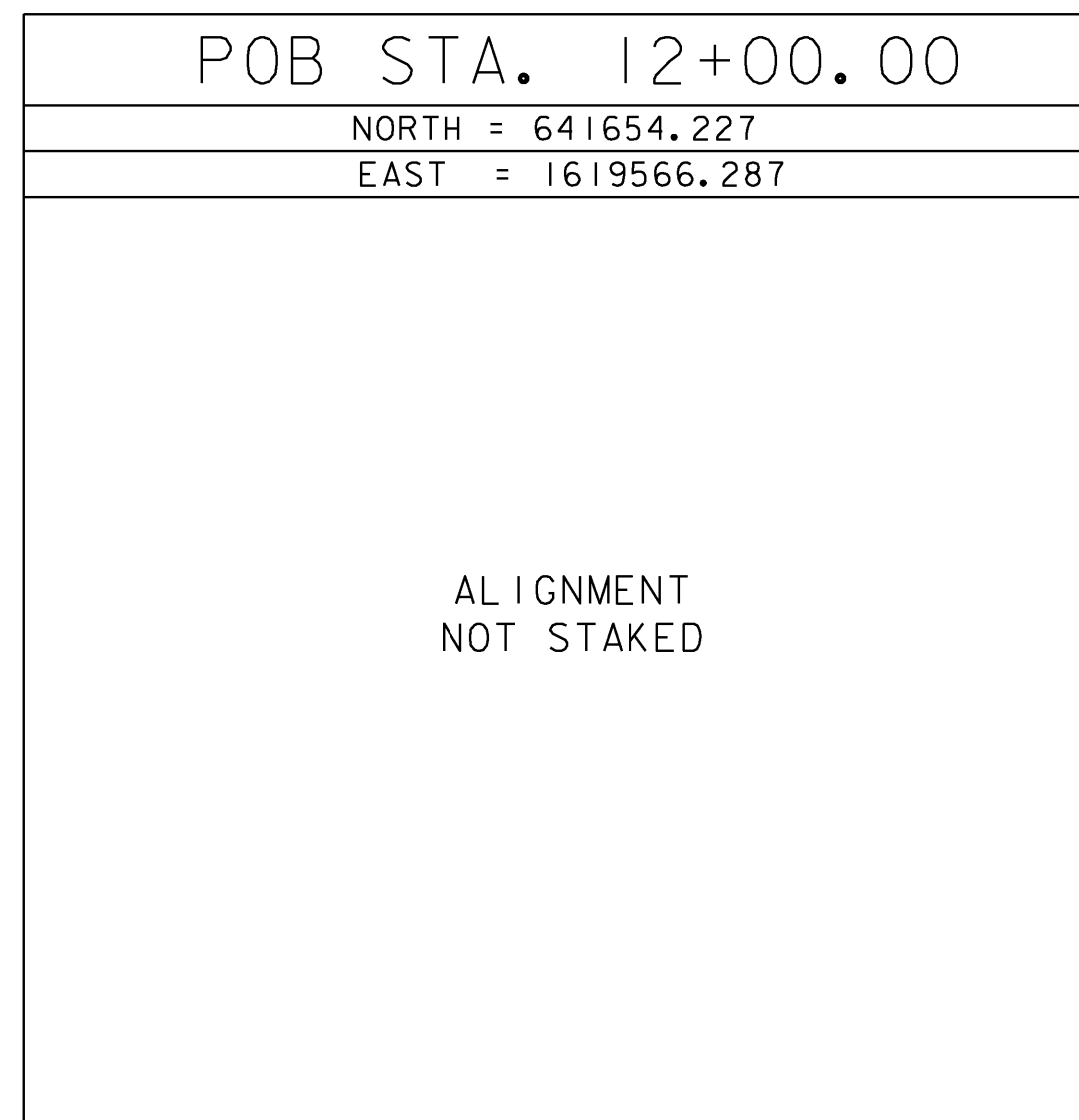
* DESCRIPTION PROVIDED BY VERMONT AGENCY OF TRANSPORTATION GEODETIC SURVEY UNIT

TRAVERSE TIES



* MAIN TRAVERSE COMPLETED: JAN 20, 2005 BY R. GILMAN & P. WINTERS

ALIGNMENT TIES



* ALIGNMENT STAKED:

DATUM
VERTICAL NAVD88
HORIZONTAL NAD 83 (96)
ADJUSTMENT Compass

TIE SHEET

PROJECT NAME: MONTPELIER
PROJECT NUMBER: BHF 6400(31)

FILE NAME: \$FILES\$
PROJECT MANAGER: SUSAN SCRIBNER
DESIGNED BY: D. D'AMATO
BRIDGE DESIGN SUPERVISOR: P. HALSTEAD

PLOT DATE: 10/12/2009
DRAWN BY: D. D'AMATO
CHECKED BY: P. PERKINS
SHEET 12 OF 63

