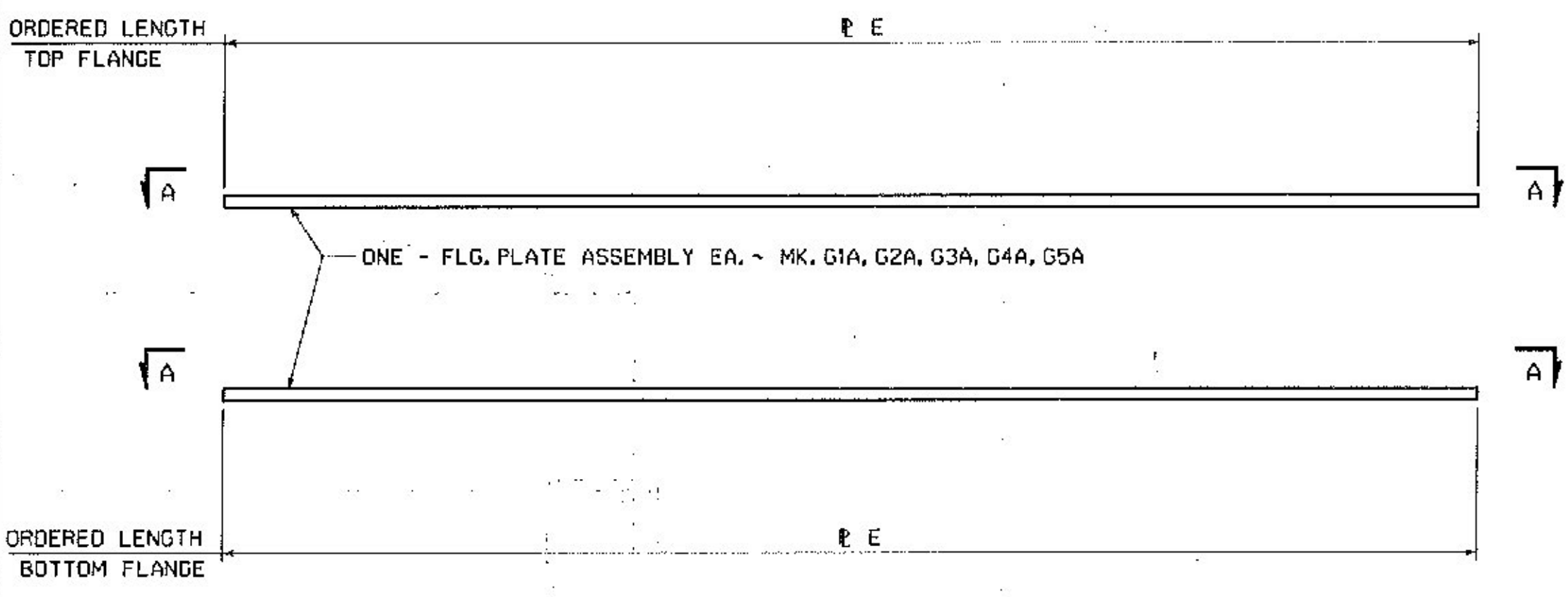
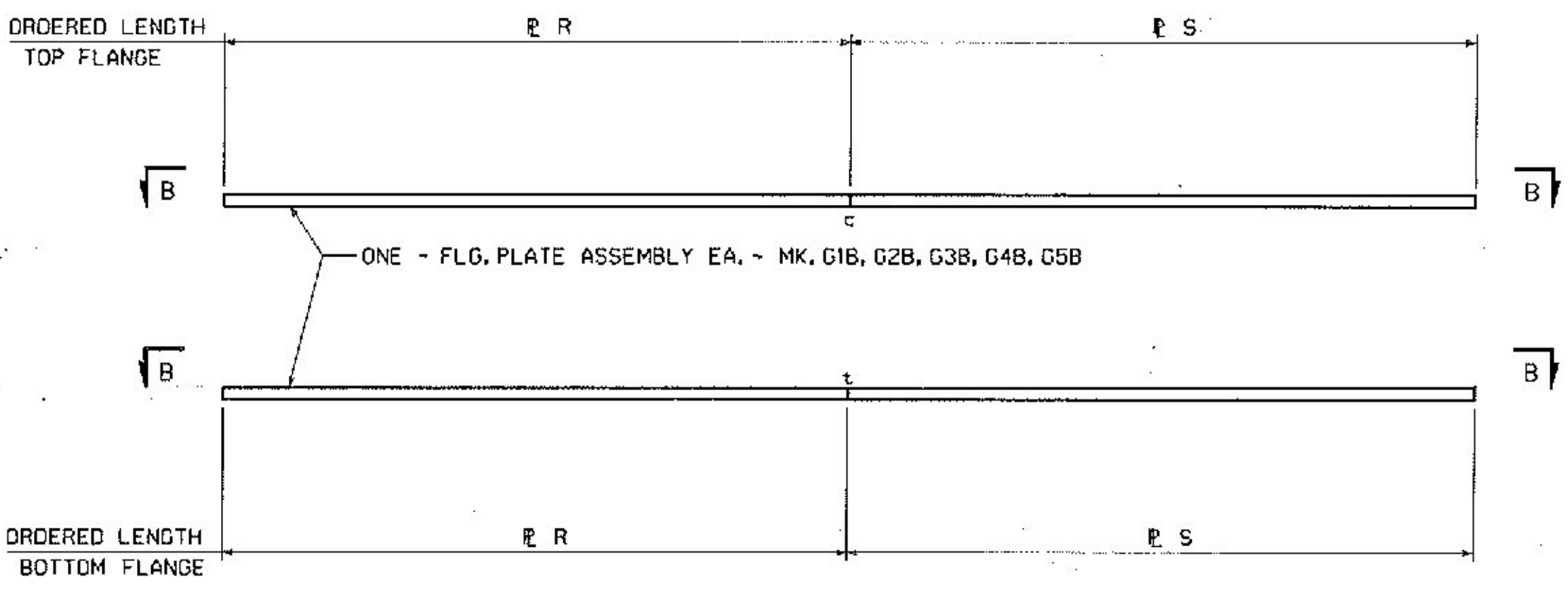


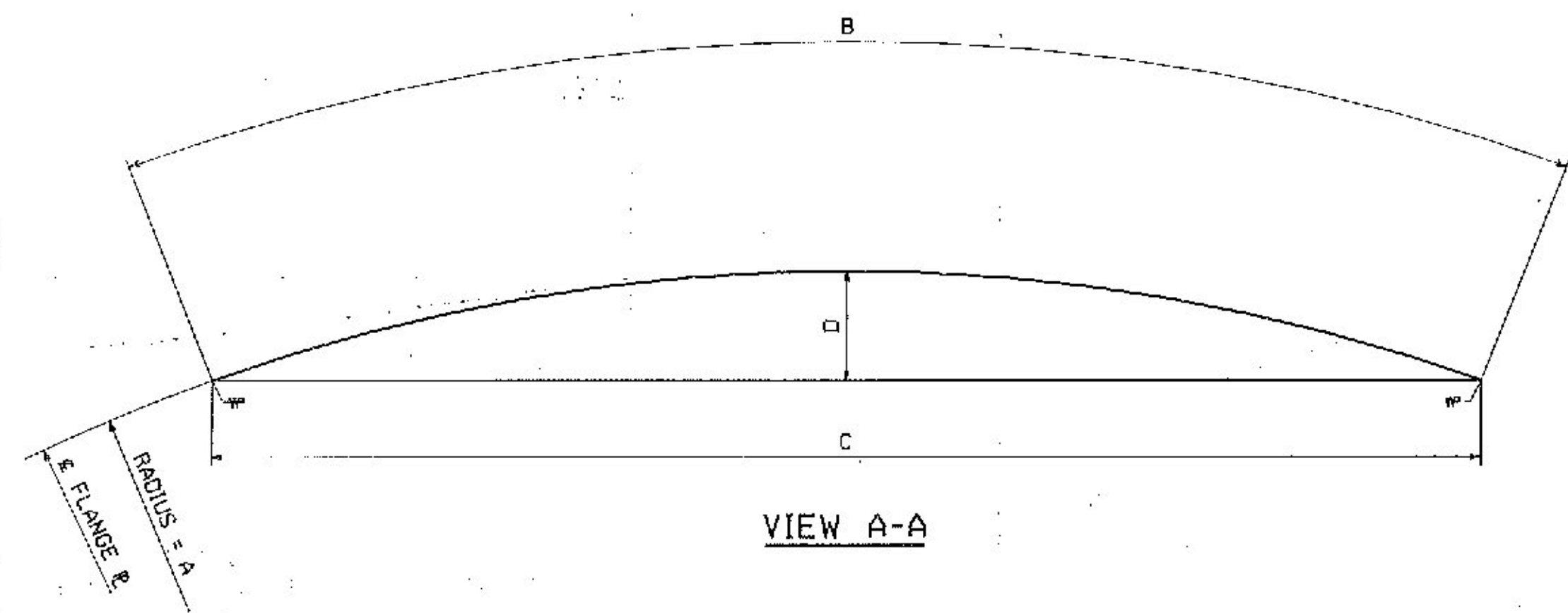
ENGLISH
 SHIPMENT C: PMA/ENG/502/2013 PROJ: 02/25/2013 SHIPMENT C: 502/2013
 3/11/2013
 4/11/11 PM
 PLOTTER: 2/5/2013



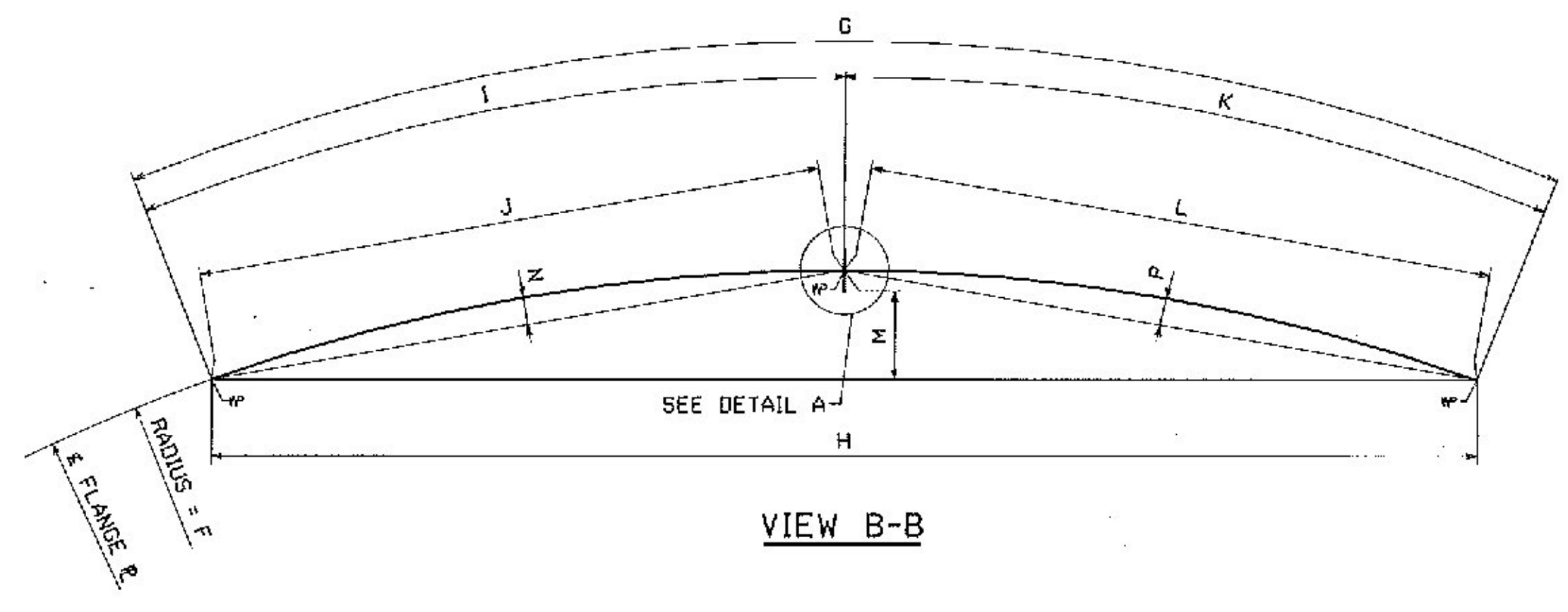
ONE - FLG. PLATE ASSEMBLY EA. - MK. G1A, G2A, G3A, G4A, G5A



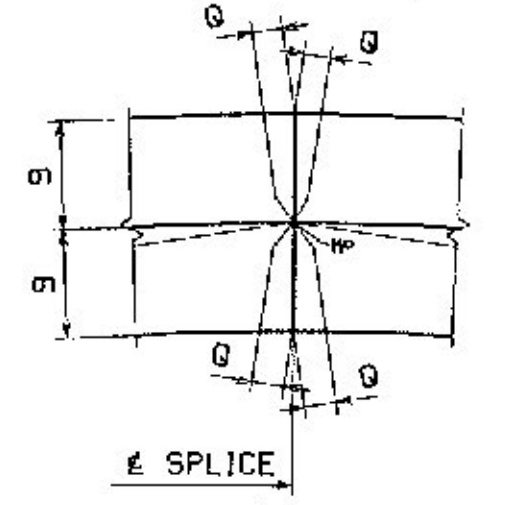
ONE - FLG. PLATE ASSEMBLY EA. - MK. G1B, G2B, G3B, G4B, G5B



VIEW A-A

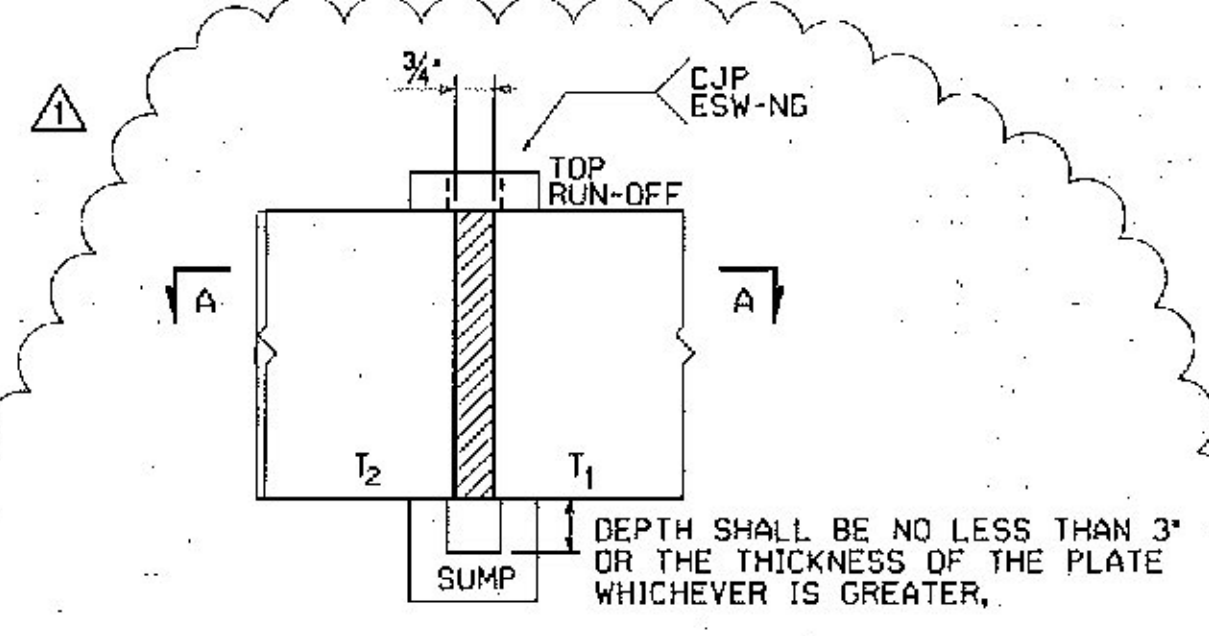


VIEW B-B

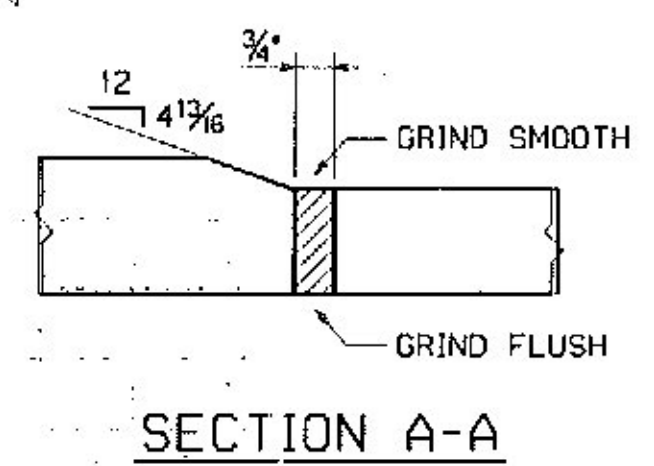


DETAIL A

MARK	FLG.	A	B	C	D	E
G1A	TOP	264'-1 1/2	31'-10	31'-9 3/4	0'-5 3/4	1 1/2 x 18 x 32'-0 (04008)
G2A	TOP	264'-1 1/2	32'-10 1/2	32'-9 3/4	0'-6 1/2	1 1/2 x 18 x 33'-0 (04007)
G3A	TOP	244'-9	34'-10 5/16	34'-9 1/16	0'-7 1/16	7/8 x 18 x 35'-1 (04015)
G4A	TOP	244'-9	35'-10 7/16	35'-10 1/16	0'-7 7/16	7/8 x 18 x 36'-1 (04014)
G5A	TOP	244'-9	36'-10 11/16	36'-10 1/4	0'-8 1/16	7/8 x 18 x 37'-1 (04013)
G1A	BOTT.	264'-1 1/2	31'-6 1/2	31'-6 3/8	0'-5 5/8	2 3/8 x 18 x 31'-9 (04004)
G2A	BOTT.	264'-1 1/2	32'-6 1/2	32'-6 1/4	0'-6	2 3/8 x 18 x 32'-9 (04003)
G3A	BOTT.	244'-9	34'-6 5/8	34'-6 1/8	0'-7 1/8	7/8 x 18 x 35'-1 (04015)
G4A	BOTT.	244'-9	35'-6 11/16	35'-6 5/16	0'-7 3/4	7/8 x 18 x 36'-1 (04014)
G5A	BOTT.	244'-9	36'-6 15/16	36'-6 3/8	0'-8 3/8	7/8 x 18 x 37'-1 (04013)



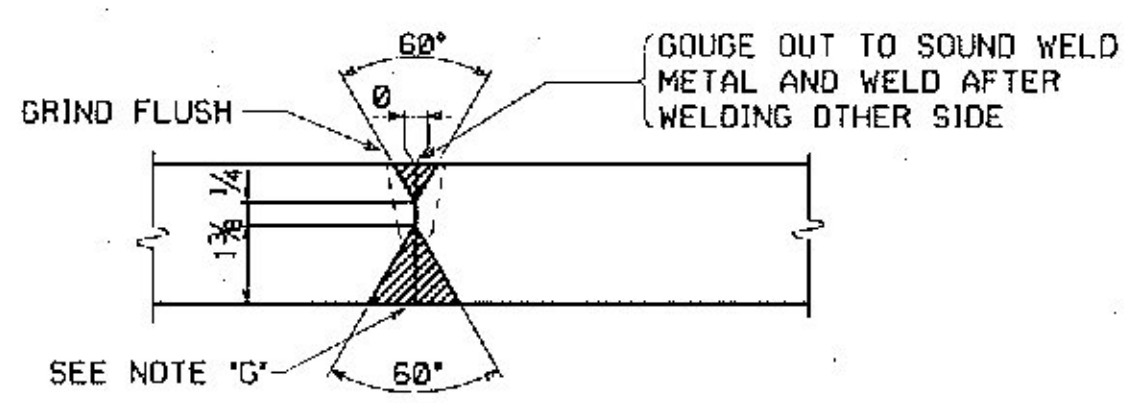
OPTIONAL ESW-NG FLANGE PLATE SPLICE
ELECTROSLAG NARROW GAP WELD PER AWS D1.5-10
(ESW-2 PROCEDURE)



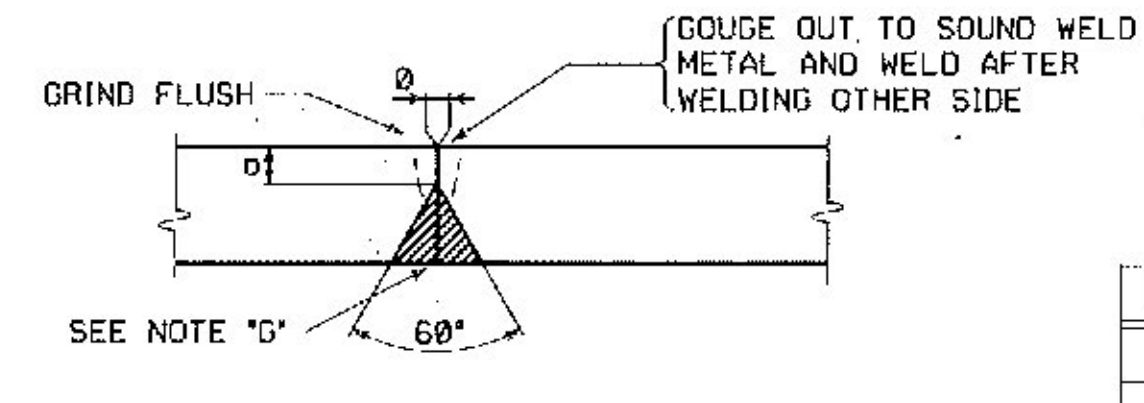
SECTION A-A

SHOP NOTE: WHEN UTILIZING THIS OPTION, DELETE SUBMERGED ARC WELDING PREPARATION AND ADJUST MATERIAL LENGTH AS REQUIRED.

NOTE 'G'
ALL SPLICES MAY HAVE A MAXIMUM REINFORCEMENT OF 1/8". GRIND SMOOTH AT SPLICES THAT ARE TO BE TESTED AND ALL BOTTOM FLANGE SPLICES.



TYPICAL FLANGE PLATE SPLICE
FOR FLANGE PLATES THICKER THAN 2" (B-U3c-S)
(W72X-2 SERIES)



TYPICAL FLANGE PLATE SPLICE
FOR FLANGE PLATES 2" THICK AND UNDER (B-L2c-S)
(W71X-2 SERIES)

FLG. THK.	φ
7/8	1/4
1 1/8	3/8

MARK	FLG.	F	G	H	I	J	K	L	M	N	P	Q	R	S
G1B	TOP	264'-1 1/2	89'-2 1/2	88'-9 1/16	44'-7 7/8	44'-7 1/4	44'-6 1/4	44'-5 5/8	3'-9 1/16	0'-11 5/16	0'-11 1/4	3/4	1 1/8 x 18 x 44'-10 (04005)	1 1/8 x 18 x 44'-10 (04005)
G2B	TOP	264'-1 1/2	88'-2 3/4	87'-9 1/16	44'-2 3/8	44'-1 1/4	44'-0 3/4	43'-11 1/4	3'-8 1/8	0'-11 1/16	0'-11	3/4	1 1/8 x 18 x 44'-5 (04006)	1 1/8 x 18 x 44'-5 (04006)
G3B	TOP	244'-9	86'-3 3/8	85'-10 1/8	43'-2 3/8	43'-2 3/16	43'-0 3/8	42'-11 5/16	3'-9 1/2	0'-11 1/16	0'-11 3/16	25/32	7/8 x 18 x 43'-6 (04009)	7/8 x 18 x 43'-3 (04010)
G4B	TOP	244'-9	85'-4 1/4	84'-11 1/16	42'-8 7/8	42'-8 1/4	42'-7 3/8	42'-6 3/4	3'-8 9/16	0'-11 3/16	0'-11 1/2	25/32	7/8 x 18 x 42'-11 (04011)	7/8 x 18 x 42'-11 (04011)
G5B	TOP	244'-9	84'-5 1/2	84'-0 1/2	42'-3 3/8	42'-3 1/4	42'-1 1/4	42'-0 3/8	3'-7 7/16	0'-11	0'-10 7/8	25/32	7/8 x 18 x 42'-7 (04012)	7/8 x 18 x 42'-7 (04012)
G1B	BOTT.	264'-1 1/2	89'-4 1/8	88'-0 1/16	44'-7 7/8	44'-7 1/4	44'-6 1/4	44'-5 5/8	3'-9 1/16	0'-11 5/16	0'-11 1/4	3/4	2 3/8 x 18 x 44'-11 (04001)	2 3/8 x 18 x 44'-11 (04001)
G2B	BOTT.	264'-1 1/2	88'-5	88'-0 1/16	44'-2 3/8	44'-1 1/4	44'-2 3/8	44'-2	3'-8 9/16	0'-11 1/16	0'-11 1/2	3/4	2 3/8 x 18 x 44'-5 (04002)	2 3/8 x 18 x 44'-5 (04002)
G3B	BOTT.	244'-9	86'-6	86'-0 5/8	43'-2 3/8	43'-2 3/16	43'-3 3/8	43'-2 3/16	3'-9 3/4	0'-11 7/16	0'-11 1/8	25/32	7/8 x 18 x 43'-5 (04009)	7/8 x 18 x 43'-6 (04009)
G4B	BOTT.	244'-9	85'-7 1/8	85'-1 1/8	42'-8 7/8	42'-8 1/4	42'-10 7/16	42'-9 9/16	3'-8 1/16	0'-11 3/16	0'-11 1/4	25/32	7/8 x 18 x 42'-11 (04011)	7/8 x 18 x 43'-3 (04010)
G5B	BOTT.	244'-9	84'-8 3/8	84'-3 3/8	42'-3 3/8	42'-3 1/4	42'-4 3/16	42'-3 1/16	3'-7 1/16	0'-11	0'-11	25/32	7/8 x 18 x 42'-7 (04012)	7/8 x 18 x 42'-7 (04012)

Vermont Agency of Transportation
RECEIVED
 CK'D BY J. CLARK OK'D BY J. GRIFFIN
 February 12, 2013
 RESUBMIT NO Approved
 BY J. LACROIX DATE 02/25/2013

NO.	REVISION	BY	CHK'D	DATE
1	APPROVAL CHANGE: ADDED ELECTRO-SLAG WELD DETAIL & WELD DESIGNATIONS	MGK	KGM	2/5/13

HOLES	
BOLTS	
COATING	ROUTE NO. TH7 (BRIDGE ST.) OVER STEVENS BRANCH ROUTE NO. TH7 STA. 13+05.00 TO STA. 14+25.00 BRIDGE NO. 11, TOWN OF BARRE, COUNTY OF WASHINGTON
CODE(S)	STATE OF VERMONT AGENCY OF TRANSPORTATION
SCALE	STATE CONT. OR REF. NO. FED. AID PROJ. NO. GENERAL CONTRACTOR MILLER CONSTRUCTION, INC. HSS PROJ. MGR HSS PROJ. MGR KEN GLIDDEN
VT	DRAWING MANAGER JOSH MURRY (JHM) MADE BY JAS CHK'D BY MGK DATE 12/26/12 HSS PROJECT NUMBER S-1120266A-1 DRAWING NUMBER FS1 OF FS1

NOTES:
 FOR GENERAL SHOP NOTES, SEE DRAWING GNI.
 ALL FLANGE PLATES REQUIRE CHARTY V-NOTCH TEST. DIMENSIONS SHOWN THUS: [44'-6 1/4] ARE THE ACTUAL DIMENSIONS THAT WILL APPEAR ON THE GIRDER DETAIL DRAWINGS. THE LETTERS 't' & 'c' AT FLANGE SPLICES INDICATE TENSION AND COMPRESSION SPLICES RESPECTIVELY.
 ALL SPLICES MARKED 't' TO BE RADIOGRAPHICALLY TESTED 100%. ALL SPLICES MARKED 'c' TO BE RADIOGRAPHICALLY TESTED 25%. ARC DIMENSIONS ARE GIVEN TO ENDS OF PLATES AS DETAILED ON GIRDER DRAWINGS.
 ALL FLANGE PLATES FOR GIRDERS ON LINES G1 THRU G5 ARE CUT TO A COMMON RADIUS AND WILL REQUIRE ADDITIONAL HEAT ADJUSTMENT. REFER TO HC DRAWINGS FOR FINAL CURVE REQUIREMENTS.
 ALL ELECTRO-SLAG SPLICES MARKED 't' TO BE ULTRASONICALLY TESTED 100%. ALL ELECTRO-SLAG SPLICES MARKED 'c' TO BE ULTRASONICALLY TESTED 25%.