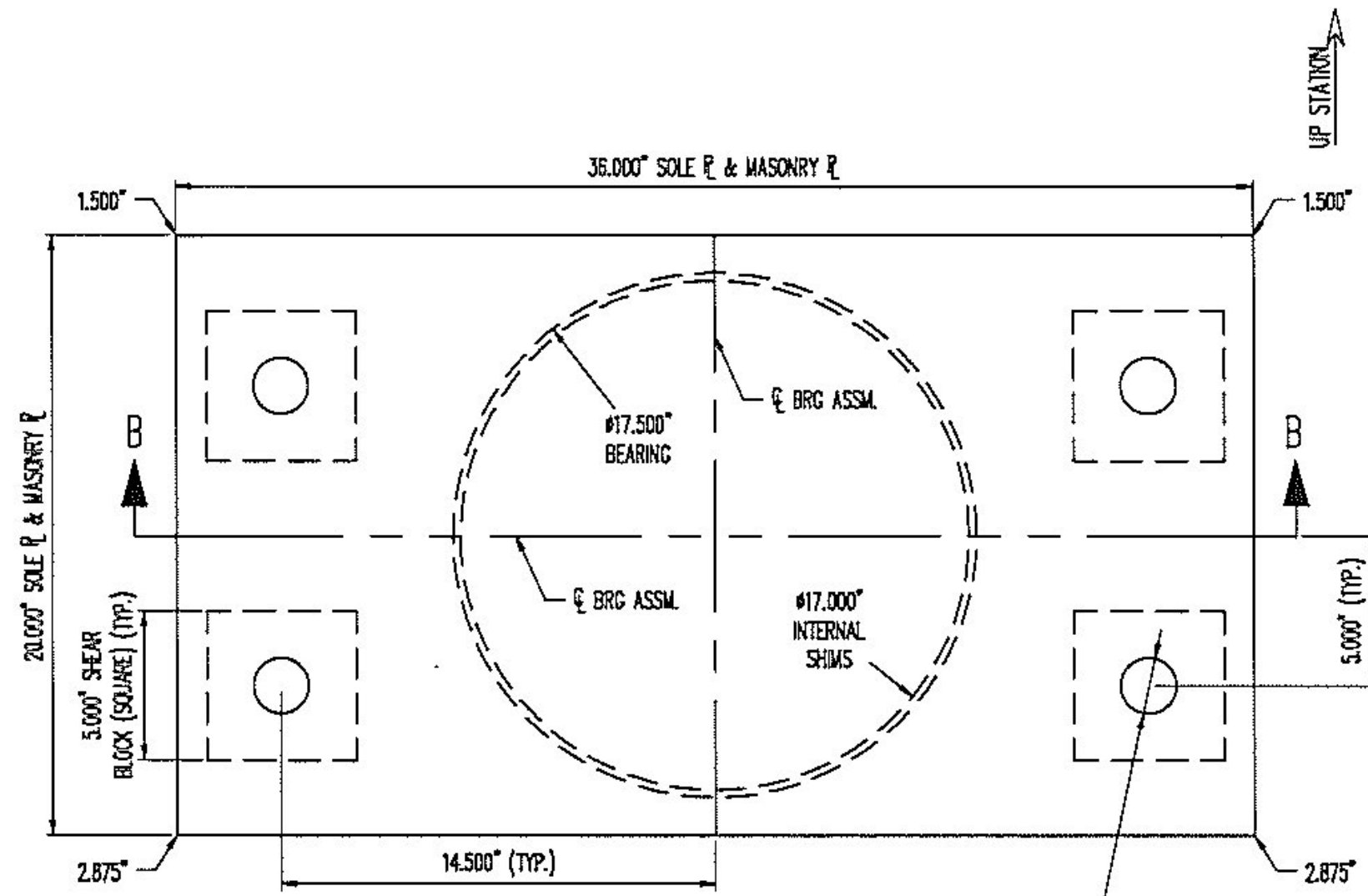


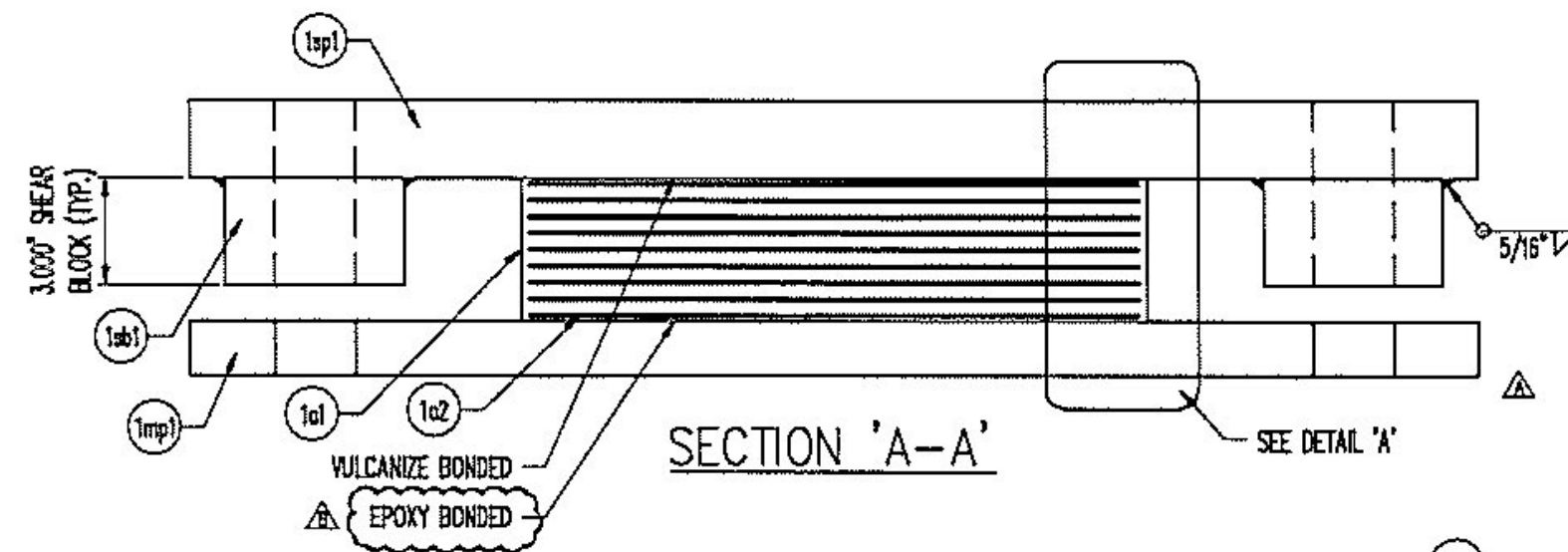
PLAN VIEW  
FIXED ELASTOMERIC BEARING  
(3) REQ'D @ ABUT. 1, GIRDER 1, 4 & 5

2.250\"/>

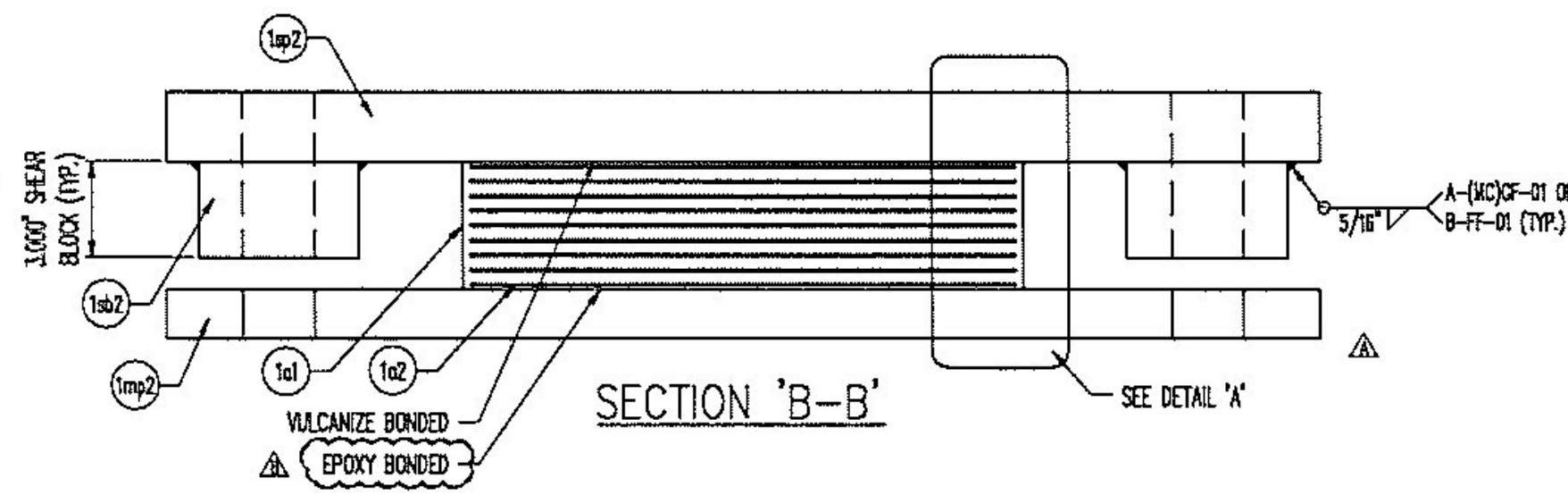


PLAN VIEW  
FIXED ELASTOMERIC BEARING  
(2) REQ'D @ ABUT. 1, GIRDERS 2 & 3

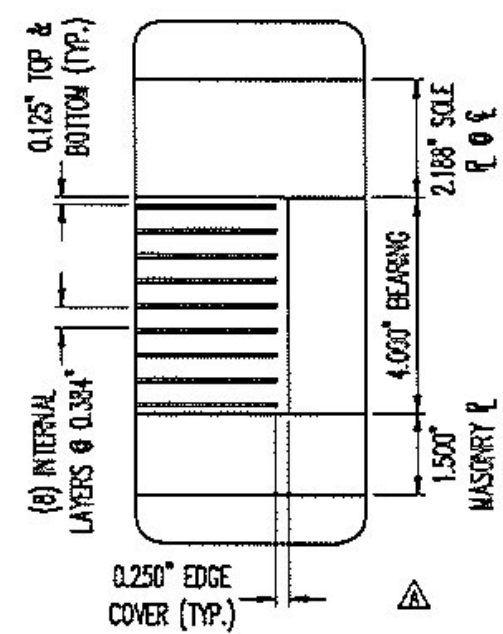
#1.875\"/>



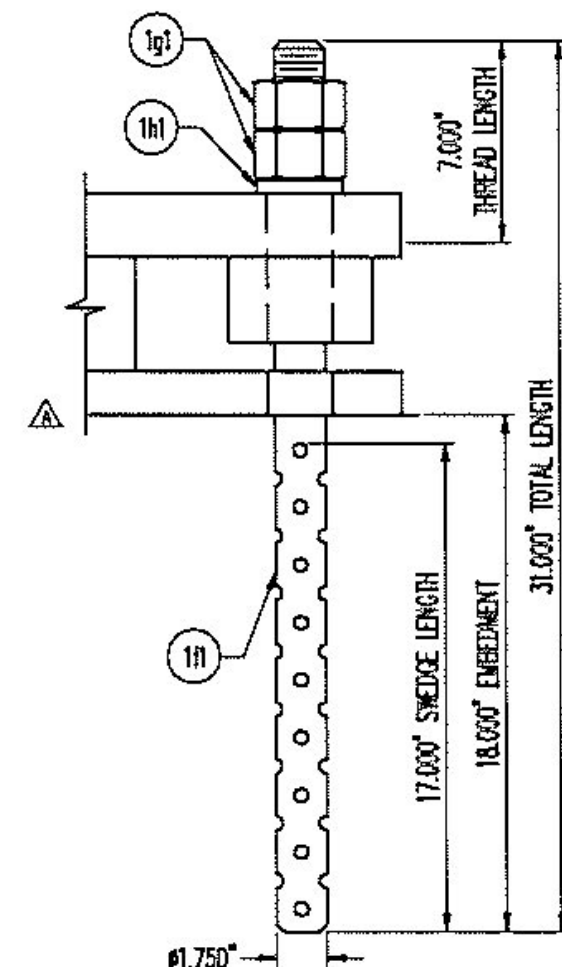
SECTION 'A-A'



SECTION 'B-B'

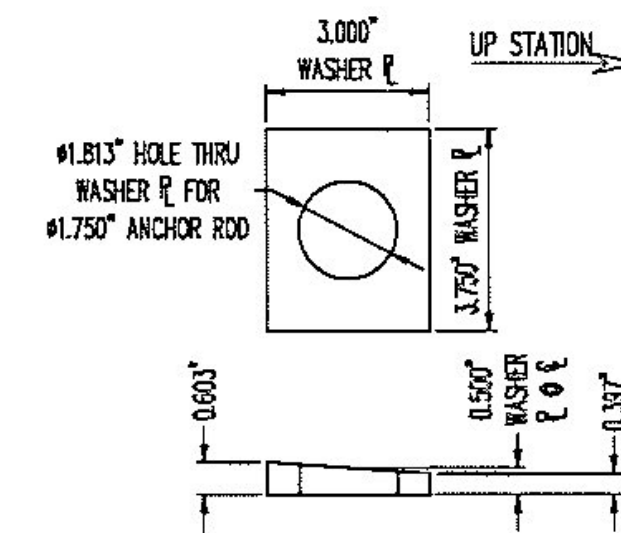


DETAIL 'A'



ANCHOR ROD DETAIL  
(20) REQ'D @ ABUT. 1, GIRDERS 1-5

NO	QTY	DESCRIPTION	MATERIAL	LENGTH	REMARKS	REV
1A	3	FIXED ELASTOMERIC BEARING				
1a1	3	4.000\"/>	NATURAL RUBBER		SHEAR MODULUS: 110 PSI +/- 15% CR.4	
1a2	27	14 GA. X 0.17,000\"/>	A1011 CR. 36		PLAIN	
1ap1	3	1.500\"/>	A709 CR. 50W	20.000\"/>	SLOTS: METALIZE, SEAL	
1ab1	12	3.000\"/>	A709 CR. 50W OR A588	5.000\"/>	SLOTS: METALIZE, SEAL	
1ap2	3	2.875\"/>	A709 CR. 50W	20.000\"/>	SLOTS: METALIZE, SEAL	
1C	2	FIXED ELASTOMERIC BEARING				
1c1	2	4.000\"/>	NATURAL RUBBER		SHEAR MODULUS: 110 PSI +/- 15% CR.4	
1c2	18	14 GA. X 0.17,000\"/>	A1011 CR. 36		PLAIN	
1cp2	2	1.500\"/>	A709 CR. 50W	20.000\"/>	HOLES: METALIZE, SEAL	
1cb2	8	3.000\"/>	A709 CR. 50W OR A588	5.000\"/>	HOLES: METALIZE, SEAL	
1cp2	2	2.875\"/>	A709 CR. 50W	20.000\"/>	HOLES: METALIZE, SEAL	
1F	20	ANCHOR ROD				A
1f1	20	0.1750\"/>	F1554 CR. 36		7\"/>	A
1G	40	HEAVY HEX NUT				
1g1	40	0.1750\"/>	A563-DH OR A194-2H		A153-HDC, DRY LUBE & DYE	
1H	20	PLATE WASHER				
1h1	20	0.603\"/>	A36	3.750\"/>	#1.813\"/>	



WASHER PLATE DETAIL

LOAD TABLE	
MAX DESIGN LOAD (KIPS)	296.4

SEE SHEET G01 FOR GENERAL NOTES AND COATING LIMITS.

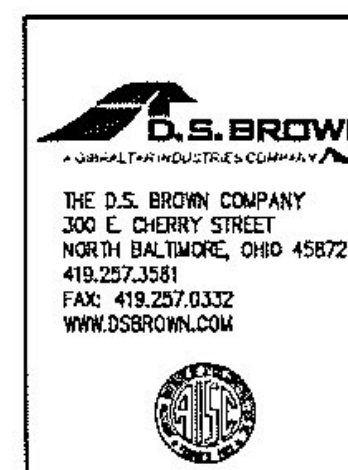
REV.	DESCRIPTION	DATE	DET.	CHKD.
1	MASONRY P. TO BEARING PAD REVISED TO EPOXY BOND	02/18/13	KTG	-
2	REMOVED FABRIC PAD & REVISED ANCHOR ROD MATERIAL	07/03/13	AND	KTG

LOCATION	ITEM	QUANTITY
TH 7 (BRIDGE ST.), 0.10 MI WEST OF RTE. 14	38782-1104-1	5 OF 5
BRIDGE - 11	-	-
PROJECT - BR 6100(7)	-	-
PROJECT NAME - BARRE TOWN	-	-
DESIGNER - VT DOT	-	-
CUSTOMER - MILLER CONSTRUCTION	-	-

DATE	DESIGNED BY	DATE	SCALE
N.T.S.	AND	KTG	12/4/12
PROJECT NUMBER	PRODUCT CODE	RELEASE	SHEET
38782	1104	1	01



Vermont Agency of Transportation  
**RECEIVED**  
 CK'D BY J.E.L. OK'D BY J.E.L.  
 May 15, 2013  
 RESUBMIT Approved  
 BY J.E.L. DATE 03.18.2013