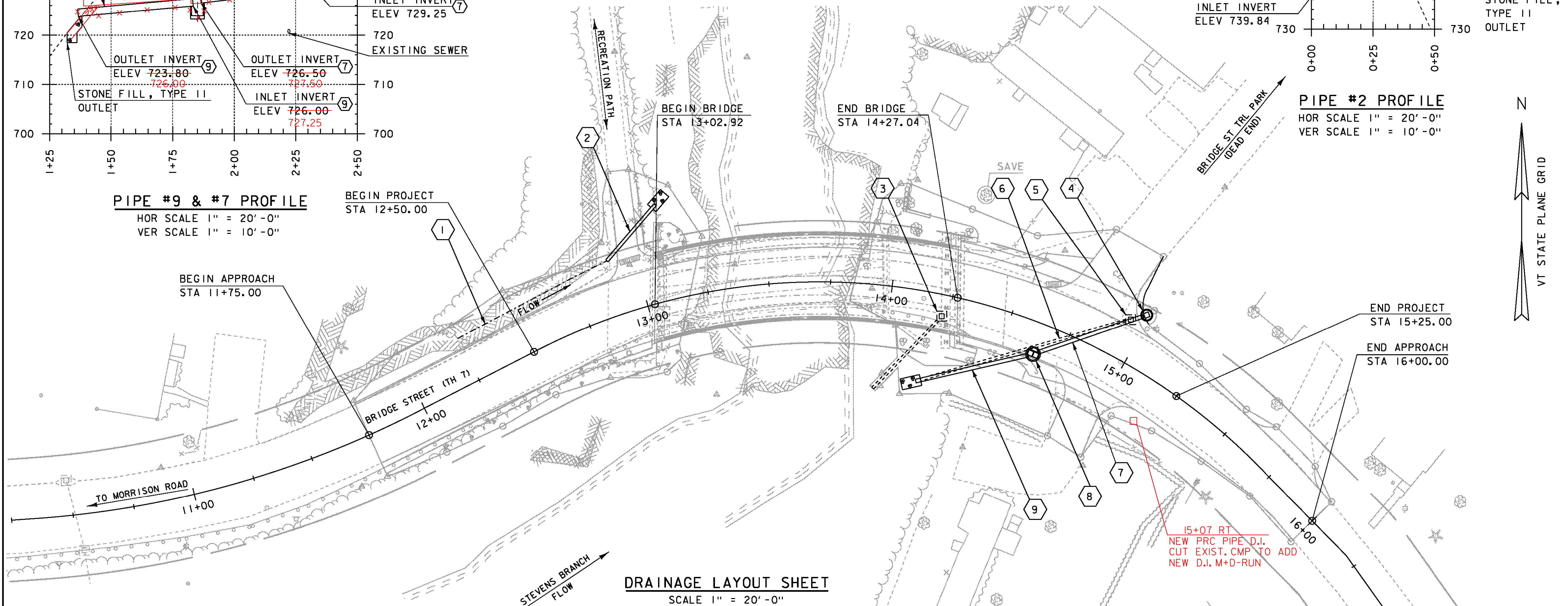
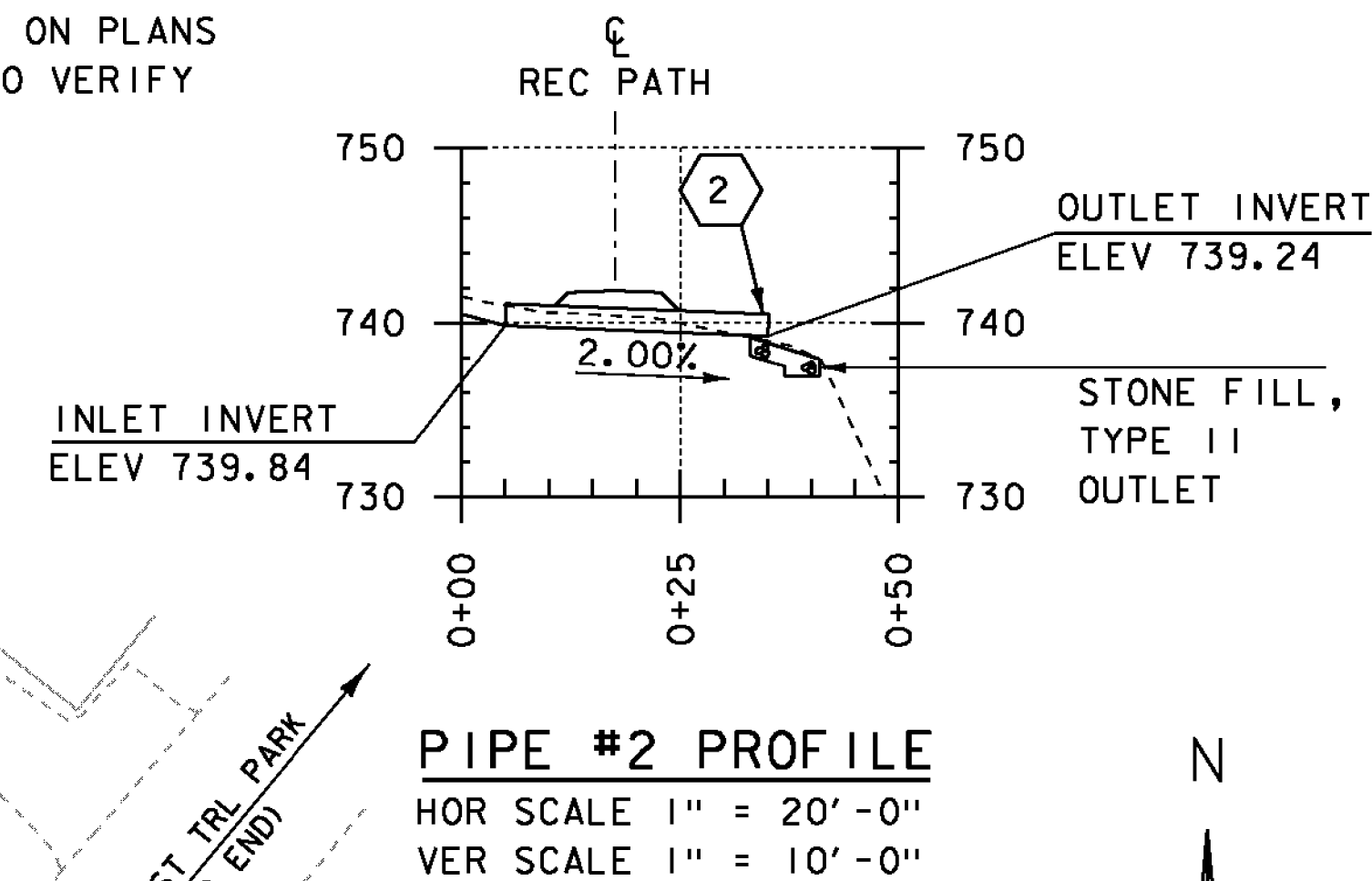


NOTES:

1. ALL ELEVATIONS ARE GIVEN AT INVERT OF PROPOSED PIPES
2. THERE MAY BE ADDITIONAL DRAINAGE PIPES WITHIN THE PROJECT AREA. THE CONTRACTOR WILL BE PAID CONTRACT UNIT PRICE (S) FOR ANY REMOVAL OR REPLACEMENT.

3. EXISTING INLET ELEVATIONS ARE BASED ON PLANS PROVIDED BY THE TOWN. CONTRACTOR TO VERIFY ELEVATIONS IN THE FIELD.
4. LOCATIONS AND ELEVATIONS MAY BE SUBJECT TO CHANGE UPON THE APPROVAL OF THE RESIDENT ENGINEER.



- ① DRAINAGE DITCH
FROM STA. 12+25.00 OFFSET 19.00' LT
TO STA. 12+90.00 OFFSET 22.50' LT
- ② NEW 15" OPTION PIPE TO STONE FILL, TYPE II
OUTLET DISSIPATOR (8' X 4'-6" X 2' DEEP)
FROM STA. 12+90.00 OFFSET 22.50' LT
TO STA. 13+12.28 OFFSET 39.00' LT
PIPE LENGTH 30.00'
- ③ REMOVE EXISTING 12" CSP AND DI
FROM STA. 13+93.43 OFFSET 41.99' RT
TO STA. 14+22.29 OFFSET 8.66' RT
- ④ NEW PRECAST REINFORCED CONCRETE DROP INLET (4' DIA.)
WITH CAST IRON GRATE WITH FRAME (TYPE B GRATE)
STA 14+98.37, 21.4' LT
TOP OF GRATE, 733.90

- ⑤ REMOVE EXISTING DROP INLET (CONCRETE BLOCK)
STA 14+93.92, 16.60' LT
- ⑥ REMOVE EXISTING 12" CSP
FROM STA. 14+18.63 OFFSET 35.70' RT
TO STA. 14+93.09 OFFSET 16.16' LT
PIPE LENGTH = 87.00'
- ⑦ NEW 18" OPTION PIPE
FROM STA. 14+65.61 OFFSET 11.58' RT
TO STA. 14+97.46 OFFSET 20.25' LT
PIPE LENGTH = ~~48.00'~~
46'

- ⑧ NEW PRECAST REINFORCED CONCRETE CATCH BASIN
INLET (5' DIA.) WITH RECTANGULAR CAST IRON
GRATE WITH FRAME FOR TWO 24" SQUARE CAST IRON
GRATES (TYPE E GRATES)
STA 14+64.00, 13.0' RT
TOP OF GRATE, 733.84
- ⑨ NEW 18" OPTION PIPE
FROM STA. 14+18.63 OFFSET 35.70' RT
TO STA. 14+93.09 OFFSET 16.16' RT
STONE FILL, TYPE II OUTLET
(8' X 4'-6" X 2' DEEP)
PIPE LENGTH = ~~49.00'~~
44'

PROJECT NAME:	BARRE TOWN	PLOT DATE:	27-SEP-2012
PROJECT NUMBER:	BRF 6100(7)	DRAWN BY:	J. GRIFFIN
FILE NAME:	s06j002drain.dgn	DESIGNED BY:	J. GRIFFIN
PROJECT LEADER:	J. LACROIX	CHECKED BY:	T. FILLBACH
DRAINAGE LAYOUT		SHEET	15 OF 70