

GPS CONTROL POINTS

HVCTRL #1#

So. Barre Az MK
 N = 608573.40
 E = 1634218.22
 ELEV. = 838.29

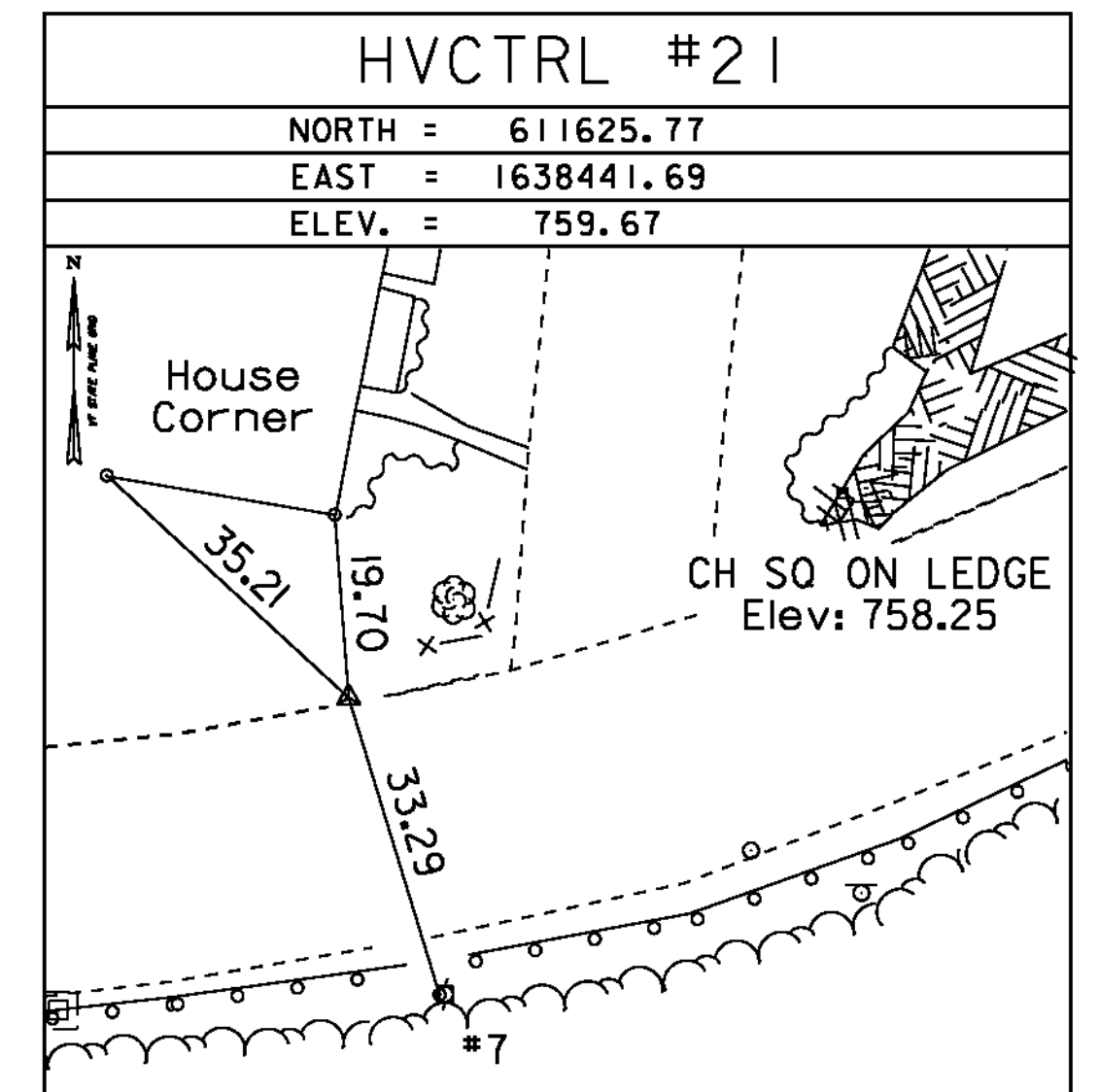
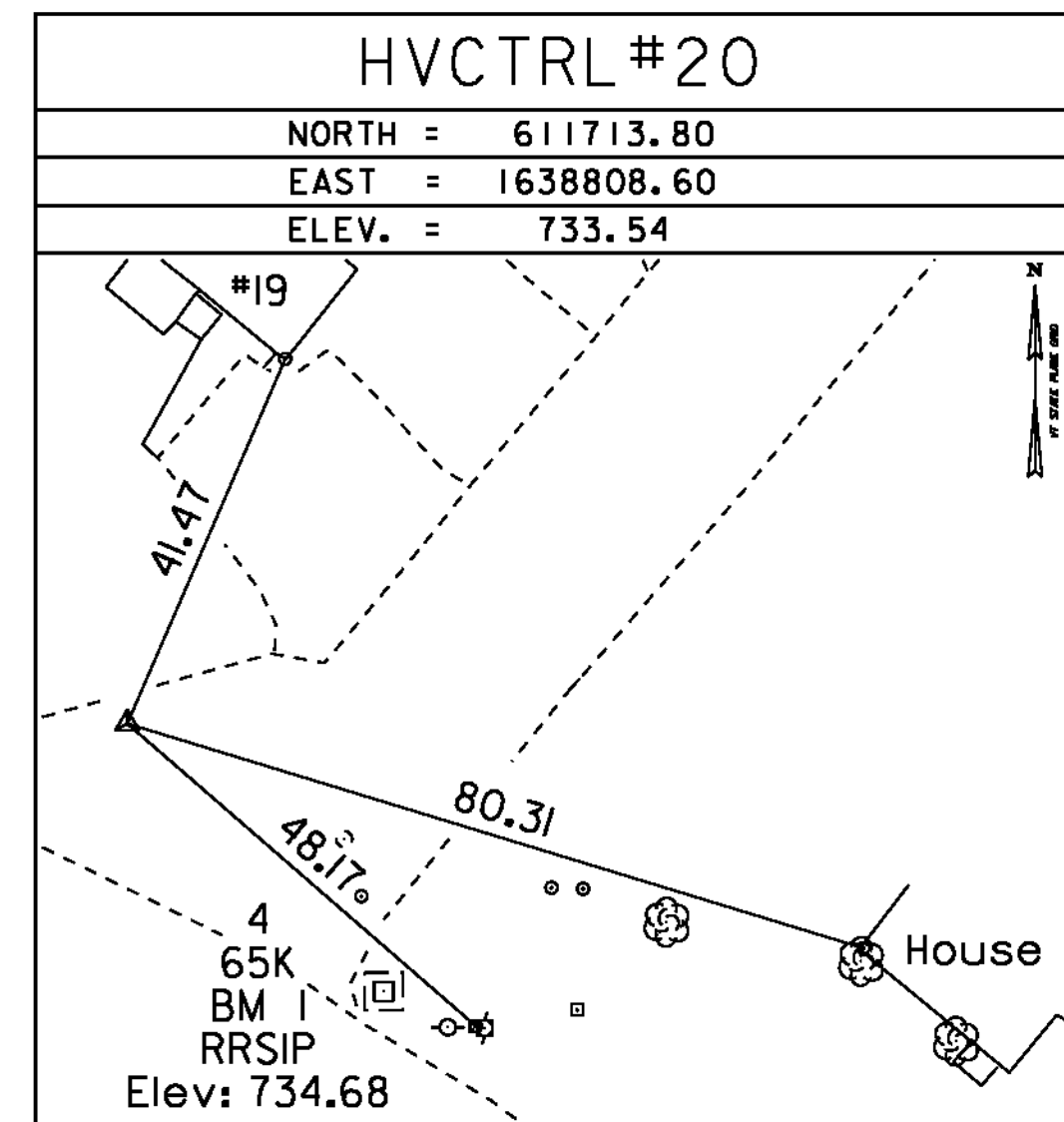
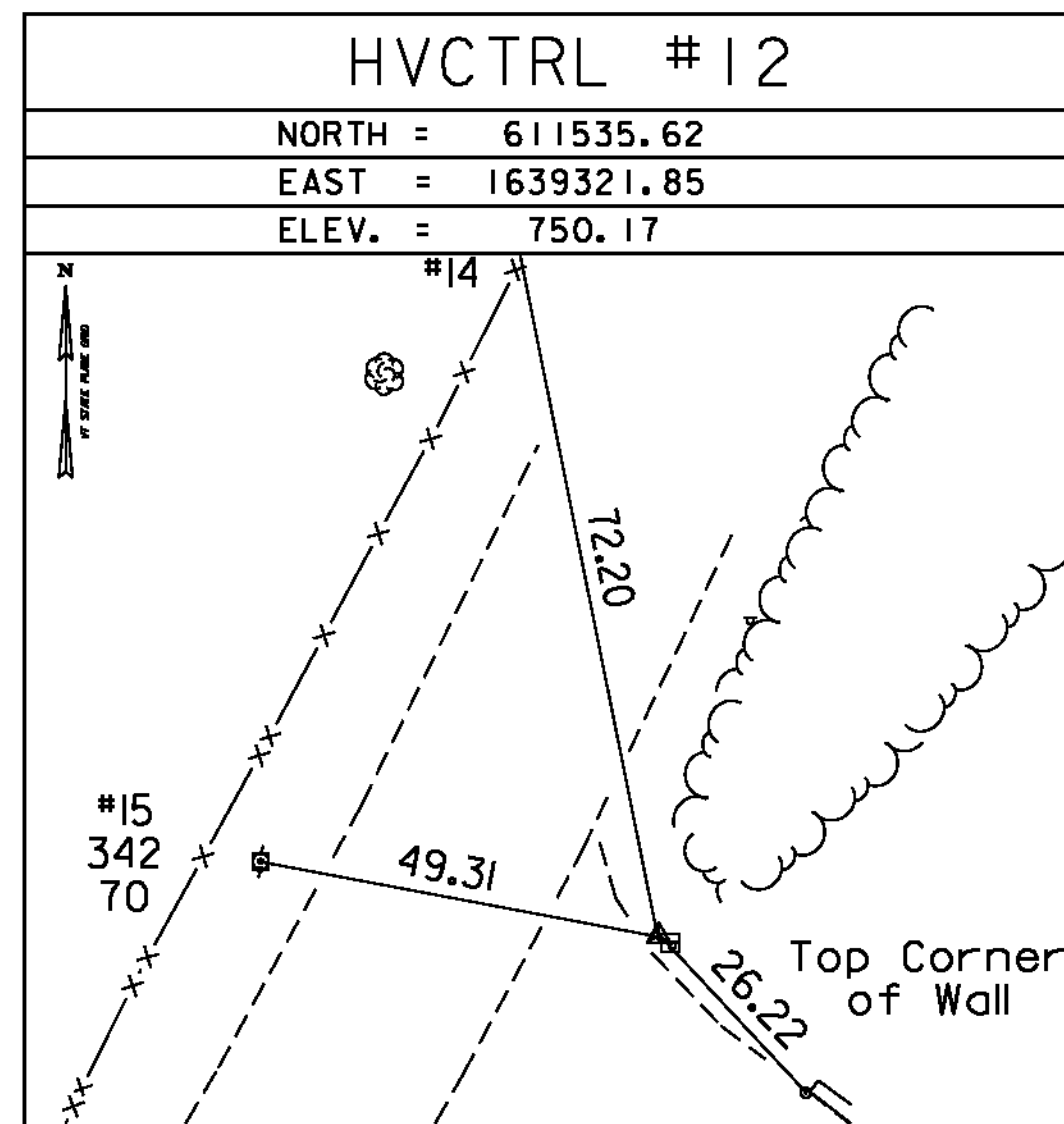
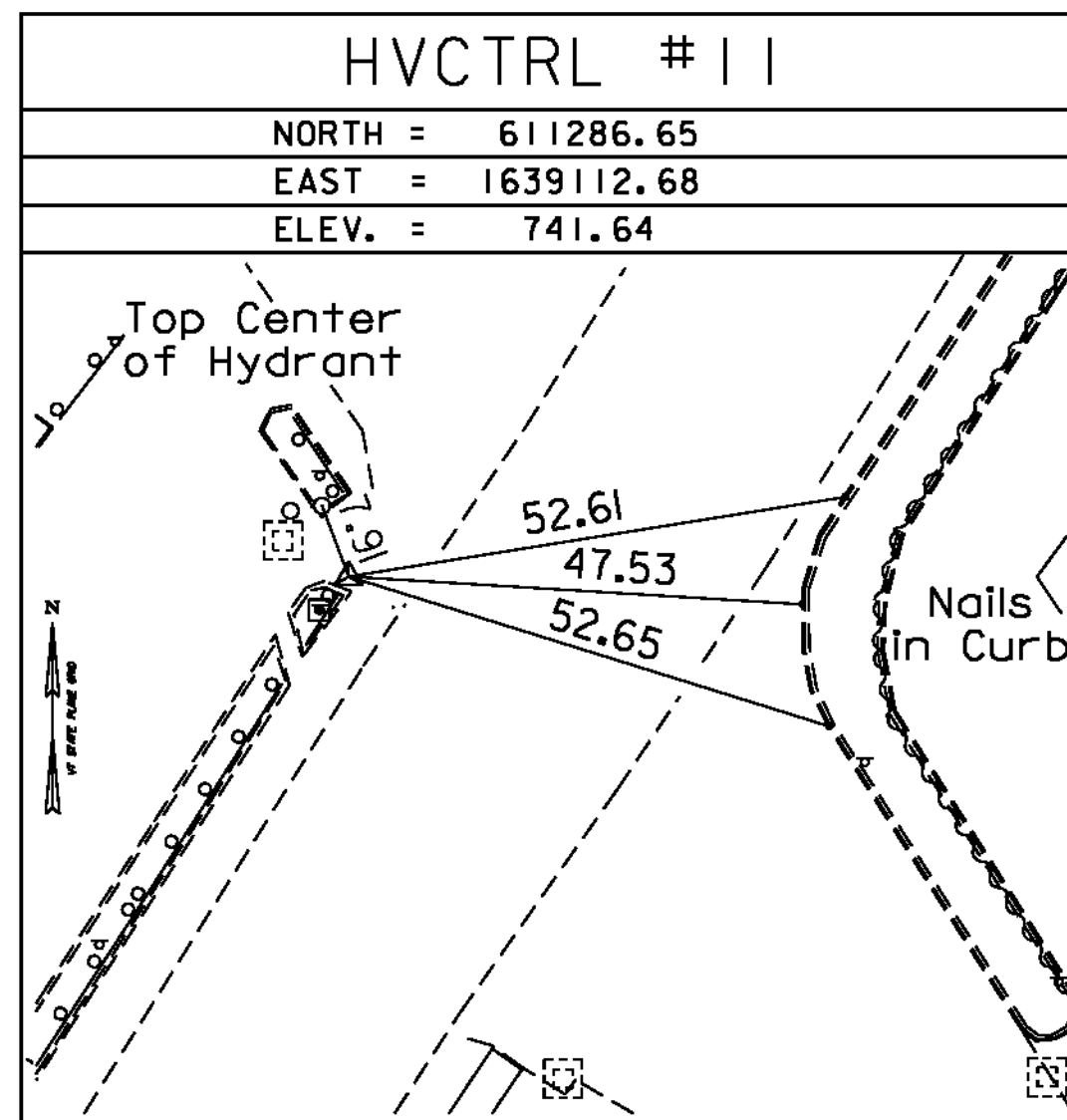
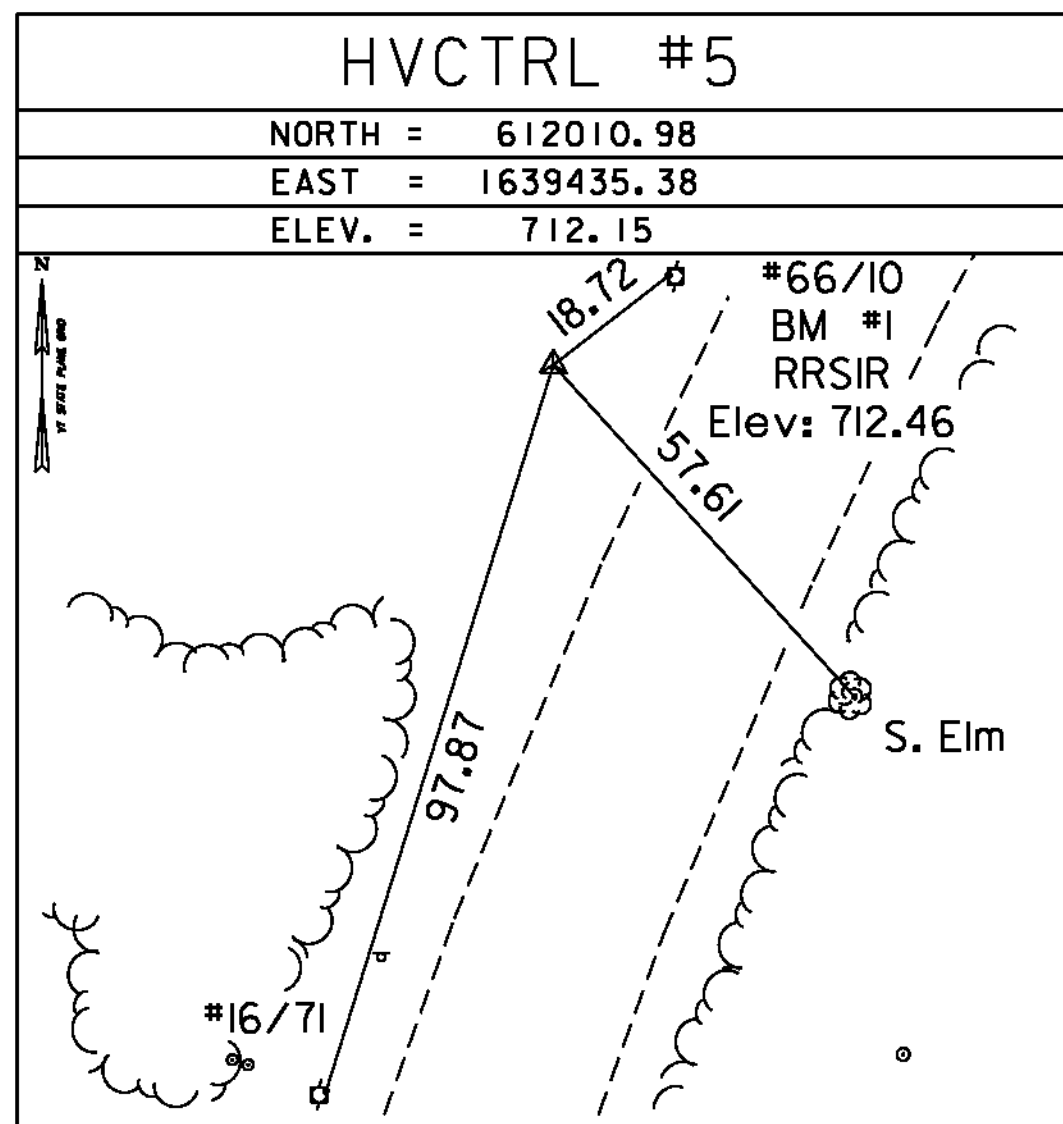
TO REACH FROM THE JUNCTION OF VERMONT ROUTE 63 AND VERMONT ROUTE 14 IN SOUTH BARRE PROCEED WESTERLY ALONG ROUTE 63 FOR 0.9 MI (1.4 KM) TO THE MARK ON THE LEFT. TO REACH FROM THE JUNCTION OF VERMONT ROUTE 63 AND MILLER ROAD (EXT) PROCEED EASTERLY ALONG ROUTE 63 FOR 1.1 MI (1.8 KM) TO THE MARK ON THE RIGHT. THE MARK IS SET IN A 5 FT (1.5 M) WIDE X 3 FT (0.9 M) HIGH ROCK OUTCROP. THE MARK IS LOCATED 59 FT (18.0 M) SOUTHWEST OF A 2 FOOT (0.6 M) SQUARE DI, 31 FT (9.4 M) SOUTH OF AND 6 FT (1.8 M) HIGHER THAN THE SOUTH EDGE OF VERMONT ROUTE 63.

HVCTRL #2

So. Barre
 N = 610161.99
 E = 1637191.18
 ELEV. = 655.67

TO REACH FROM THE JUNCTION OF VERMONT ROUTE 63 AND VERMONT ROUTE 14 IN SOUTH BARRE PROCEED WESTERLY ALONG ROUTE 63 FOR 0.25 MI (0.40 KM) TO THE MARK ON THE RIGHT. TO REACH FROM THE JUNCTION OF VERMONT ROUTE 63 AND MILLER ROAD (EXT) PROCEED EASTERLY ALONG ROUTE 63 FOR 1.75 MI (2.82 KM) TO THE MARK ON THE LEFT. THE MARK IS A 4 INCH SQUARE RIGHT OF WAY MONUMENT WITH A SURVEY DISK SET IN THE TOP AND IS LOCATED 0.7 FT (21.3 CM) BELOW THE ROAD. THE MARK IS LOCATED 119.4 FT (36.4 M) EAST OF AN 18 INCH CGMP CULVERT WITH CONCRETE HEADWALL, 74.9 FT (22.8 M) NORTHWEST OF A TRAFFIC SIGNAL SIGN, 71.5 FT (21.8 M) NORTHEAST OF A DIVIDED HIGHWAY SIGN AND 2.3 FT (0.7 M) NORTH OF THE EDGE OF VERMONT ROUTE 63.

TRAVERSE TIES



ALIGNMENT TIES

NORTH =
EAST =
ELEV. =

NORTH =
EAST =
ELEV. =

NORTH =
EAST =
ELEV. =

NORTH =
EAST =
ELEV. =

NORTH =
EAST =
ELEV. =

DATUM	
VERTICAL	NAVD 88
HORIZONTAL	NAD 83 (92)
ADJUSTMENT	Compass

PROJECT NAME:	BARRE TOWN
PROJECT NUMBER:	BRF 6100 (7)
FILE NAME:	06J002\survey\06J002f1.dgn
PROJECT LEADER:	J. LACROIX
DESIGNED BY:	SURVEY
TIE SHEET	
PLOT DATE:	27-SEP-2012
DRAWN BY:	R. BULLOCK
CHECKED BY:	
SHEET II	OF 70