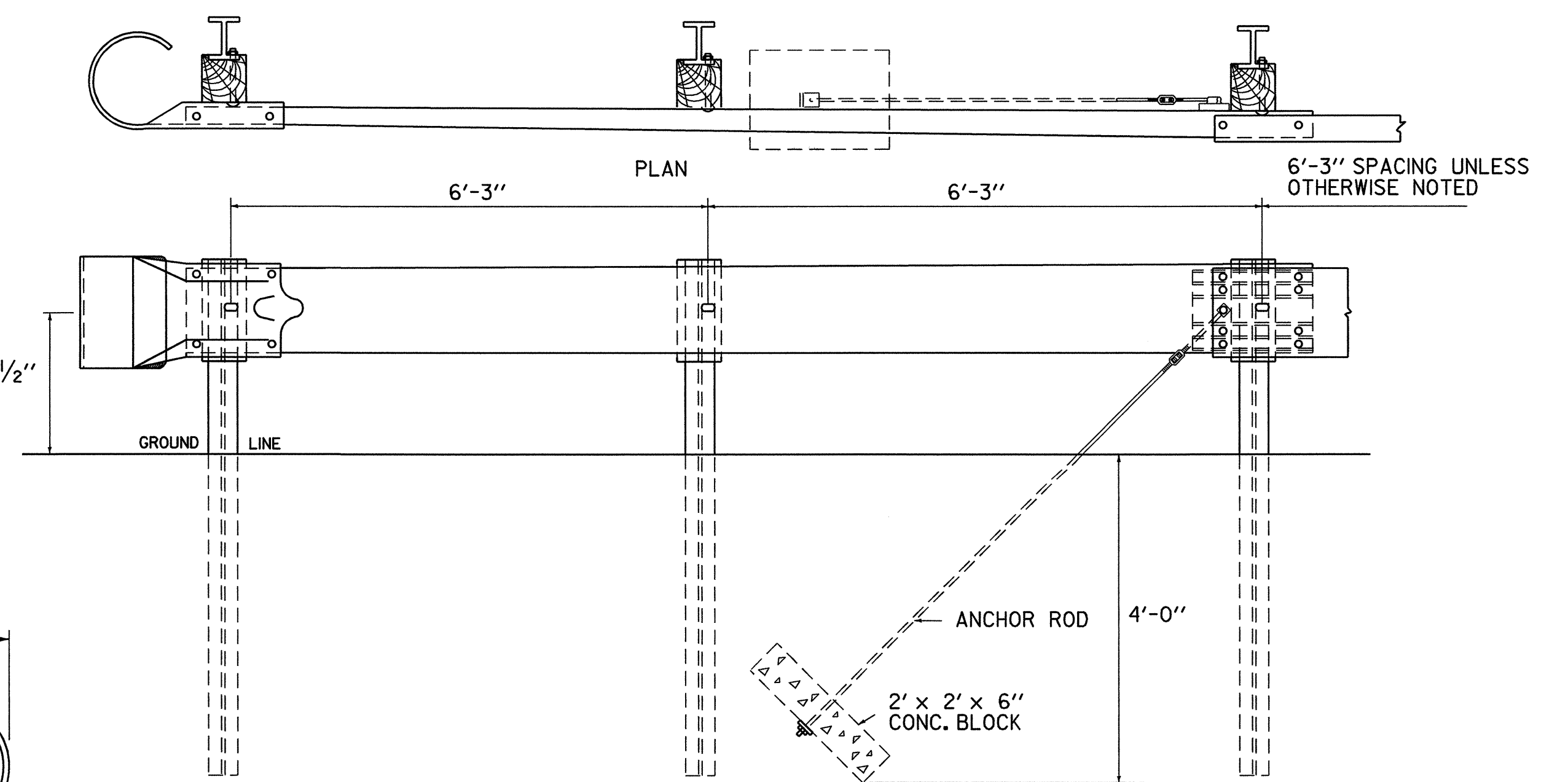


APPROACH END DETAIL  
 NHS APPROVED FOR USE WHERE DESIGN SPEED IS 40 OR LESS MPH  
 NON-NHS APPROVED FOR USE WHERE DESIGN SPEED IS 50 OR LESS MPH

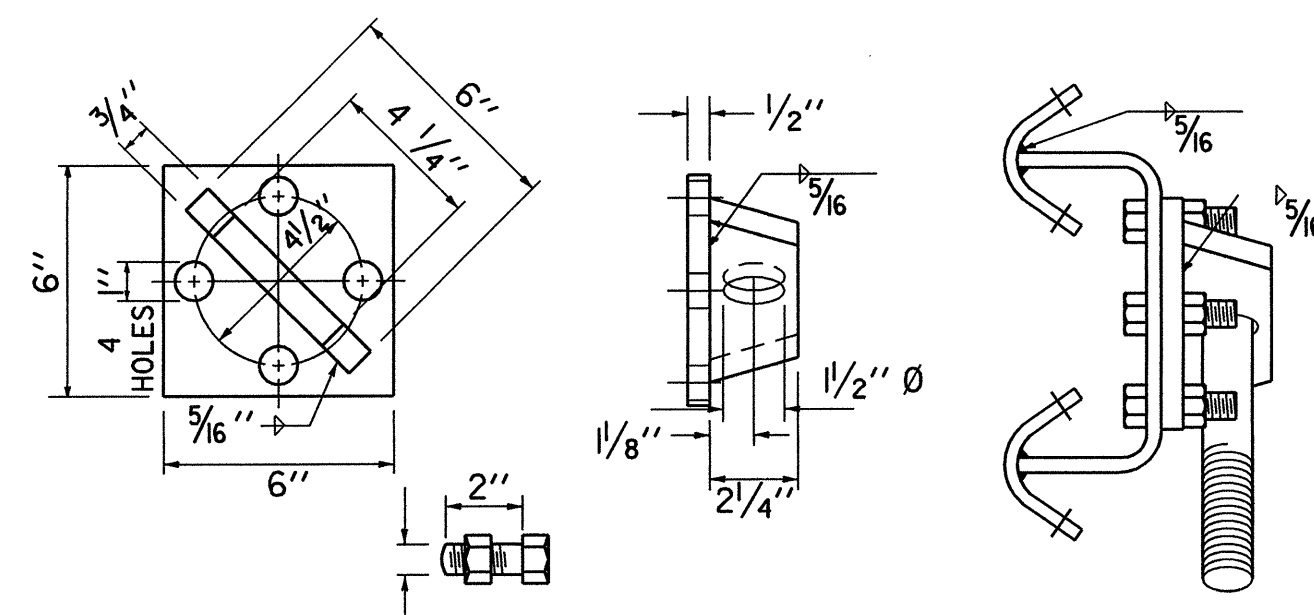


ASSEMBLY ELEVATION

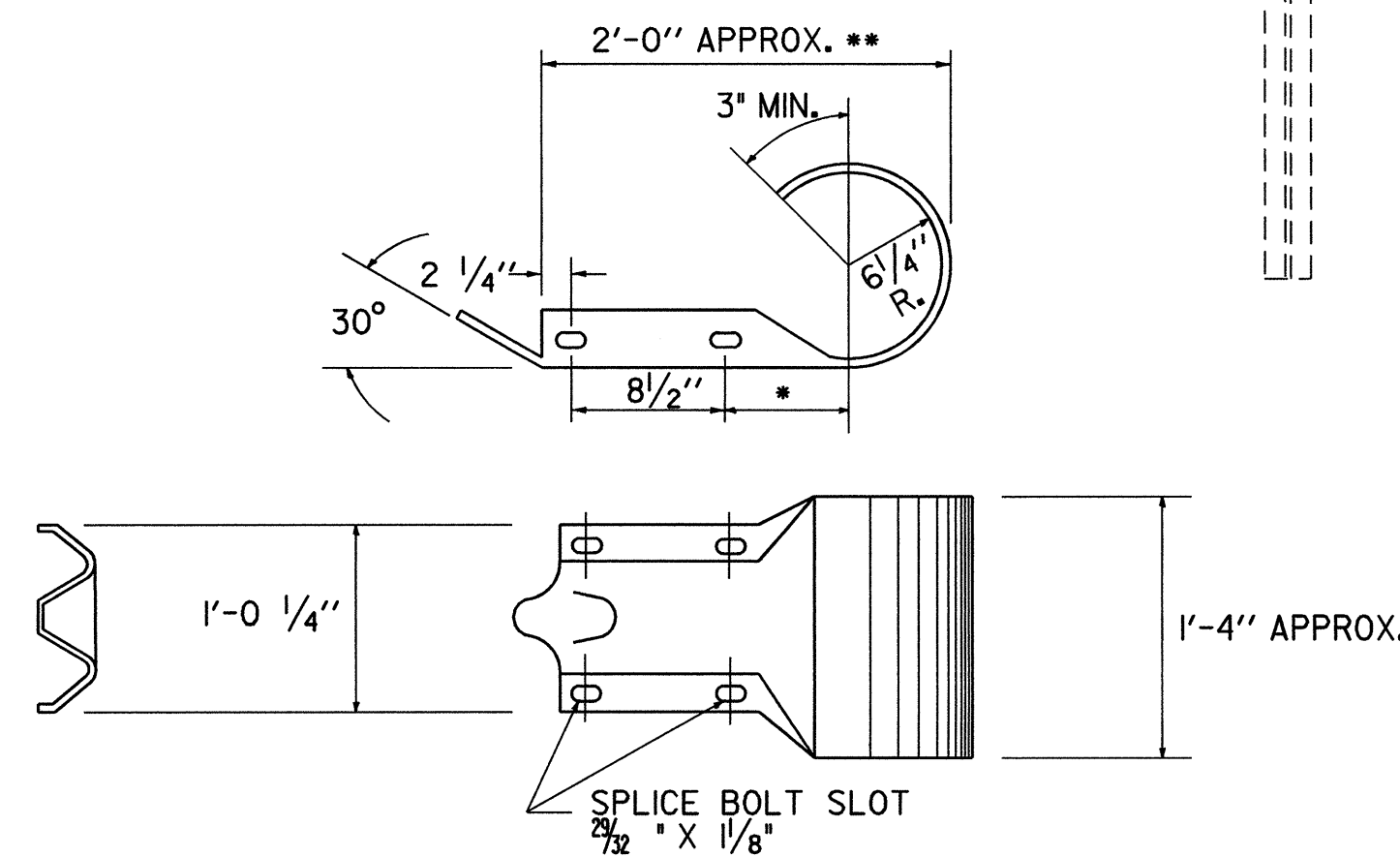
TRAILING END TERMINAL FOR USE ON ONE-WAY HIGHWAYS

GENERAL NOTES:

1. ALL METAL PARTS SHALL BE GALVANIZED.
2. ALL WOOD POSTS SHALL BE GIVEN A PRESERVATIVE TREATMENT.
3. DETAILS PERTINENT TO THE STANDARD INSTALLATION OF 'W' BEAM SECTIONS WILL BE FOUND ON STANDARD DRAWING G-1.
4. FOR DESCRIPTION AND SPECIFICATIONS OF PARTS IDENTIFIED BY '(ARTBA...)' AND OTHER DETAILS OF POSTS, POST ACCESSORIES, FASTENERS AND RAIL ELEMENTS, SEE AASHTO-AGC-ARTBA JOINT TASK FORCE NO. 13, TITLED 'A GUIDE TO STANDARDIZED HIGHWAY BARRIER HARDWARE', LATEST EDITION.

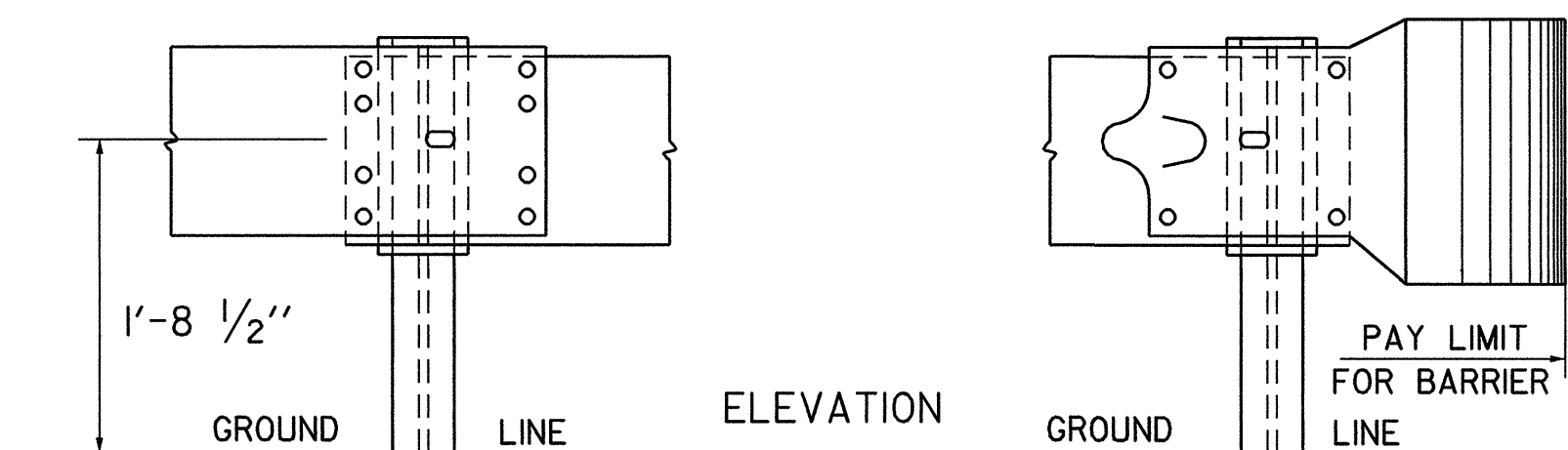


ANCHOR ROD CONNECTOR



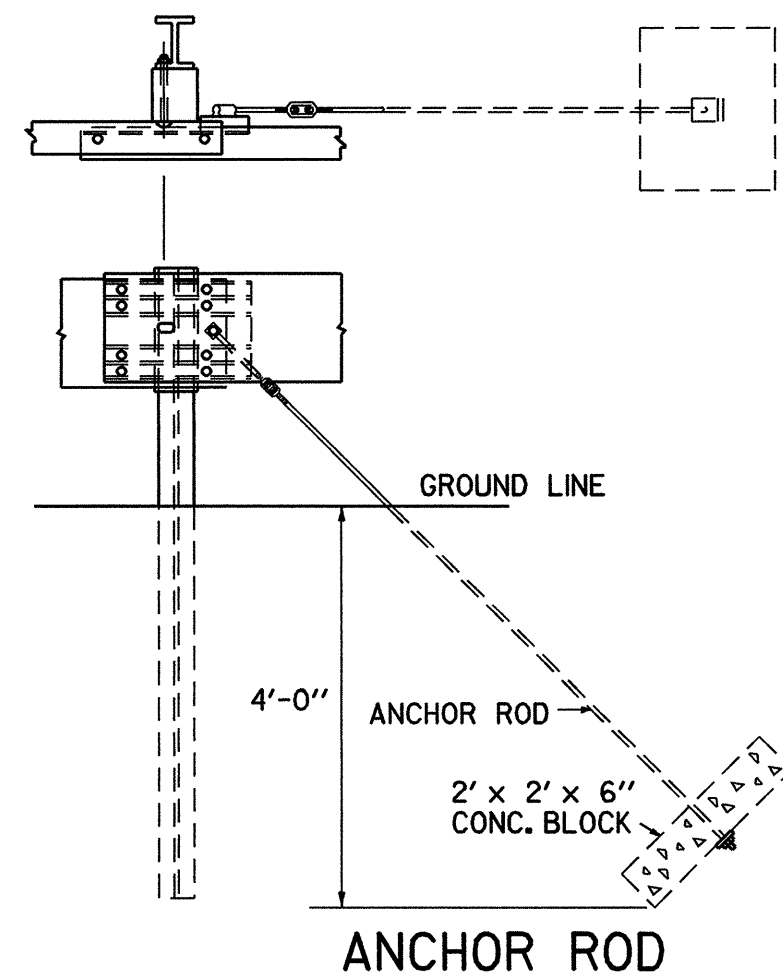
ROUNDED 'W' BEAM END SECTION

\* THIS DIMENSION IS 7/16" IN RE-7-79. IF THE DIMENSION IS USED IN THIS PART, IT WILL GIVE AN ACCEPTABLE OVERALL LENGTH (\*\*) OF APPROXIMATELY 2'-11/2".\*

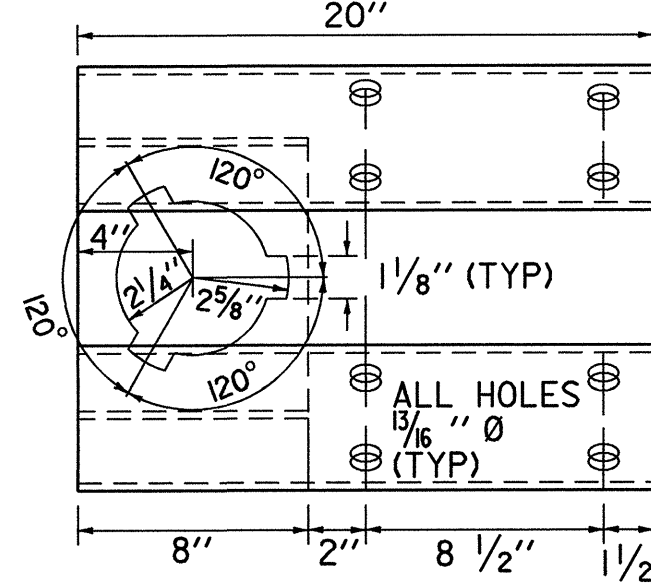


STEEL BEAM MEDIAN BARRIER

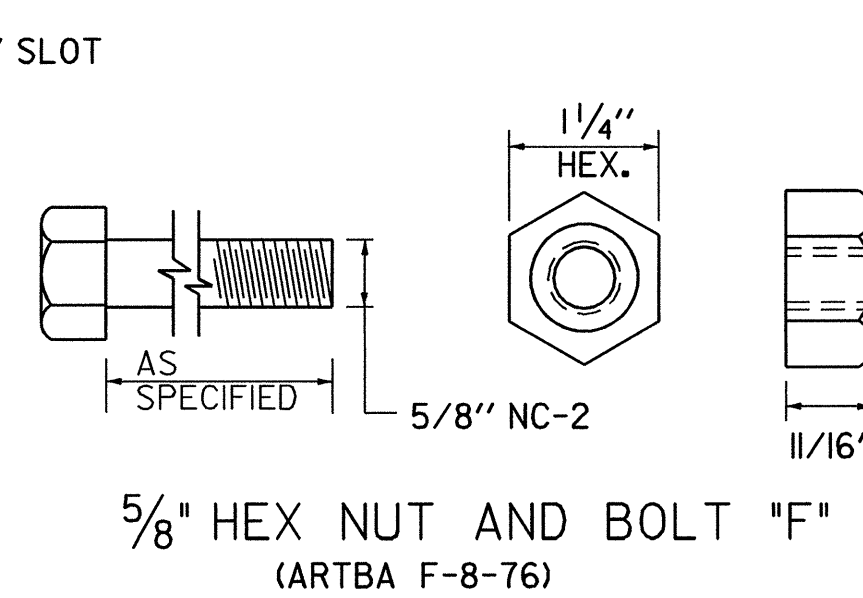
NOTE: TO BE USED OUTSIDE CLEAR ZONE ONLY.



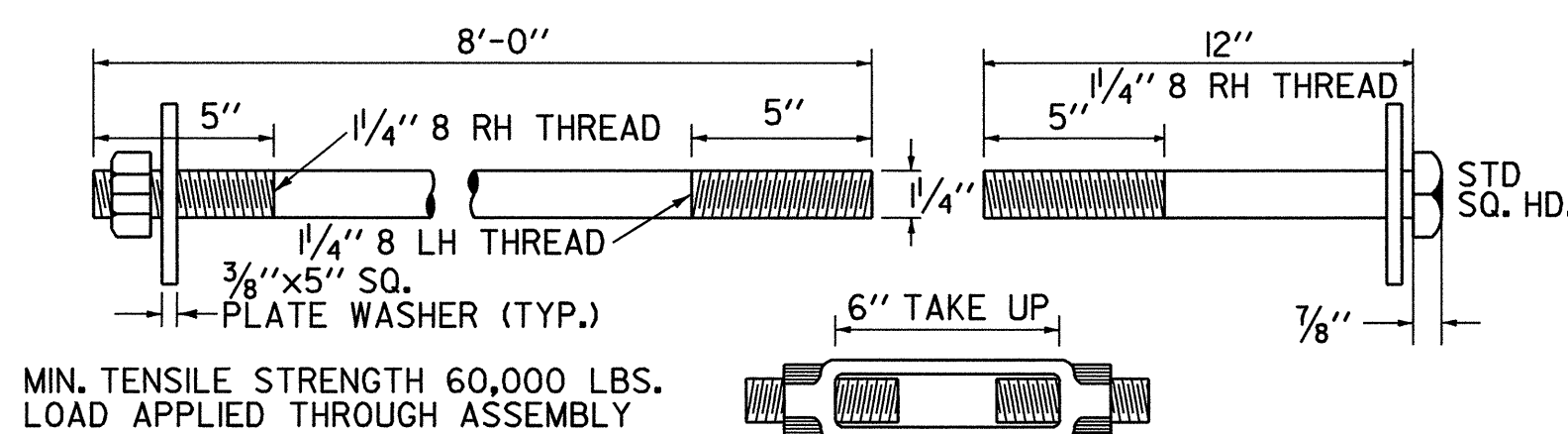
ANCHOR ROD



RECTANGULAR GUARDRAIL PLATE WASHER (ARTBA F-12-73)



5/8" HEX NUT AND BOLT 'F' (ARTBA F-8-76)



TURNBUCKLE

FASTENER DETAILS

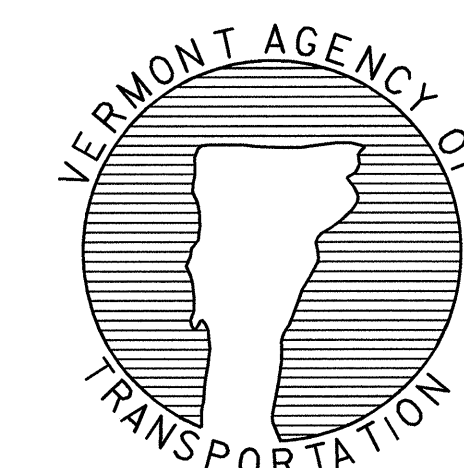
OTHER STANDARD REQUIRED G-1

REVISIONS AND CORRECTIONS  
 JUNE 1, 1994 - REISSUED, WITHOUT CHANGE, UNDER NEW SIGNATURES.  
 JAN. 3, 2000 - UPDATED TO REFLECT METRIC STD. CHANGES

APPROVED

*[Signature]*  
 DIRECTOR OF PROJECT DEVELOPMENT  
*[Signature]*  
 ROADWAY AND TRAFFIC DESIGN ENGINEER

STEEL BEAM GUARDRAIL APPROACH END TERMINAL  
 STEEL BEAM GUARDRAIL TRAILING END TERMINAL  
 ANCHOR FOR STEEL BEAM GUARDRAIL  
 STEEL BEAM MEDIAN BARRIER



STANDARD  
 G-1d