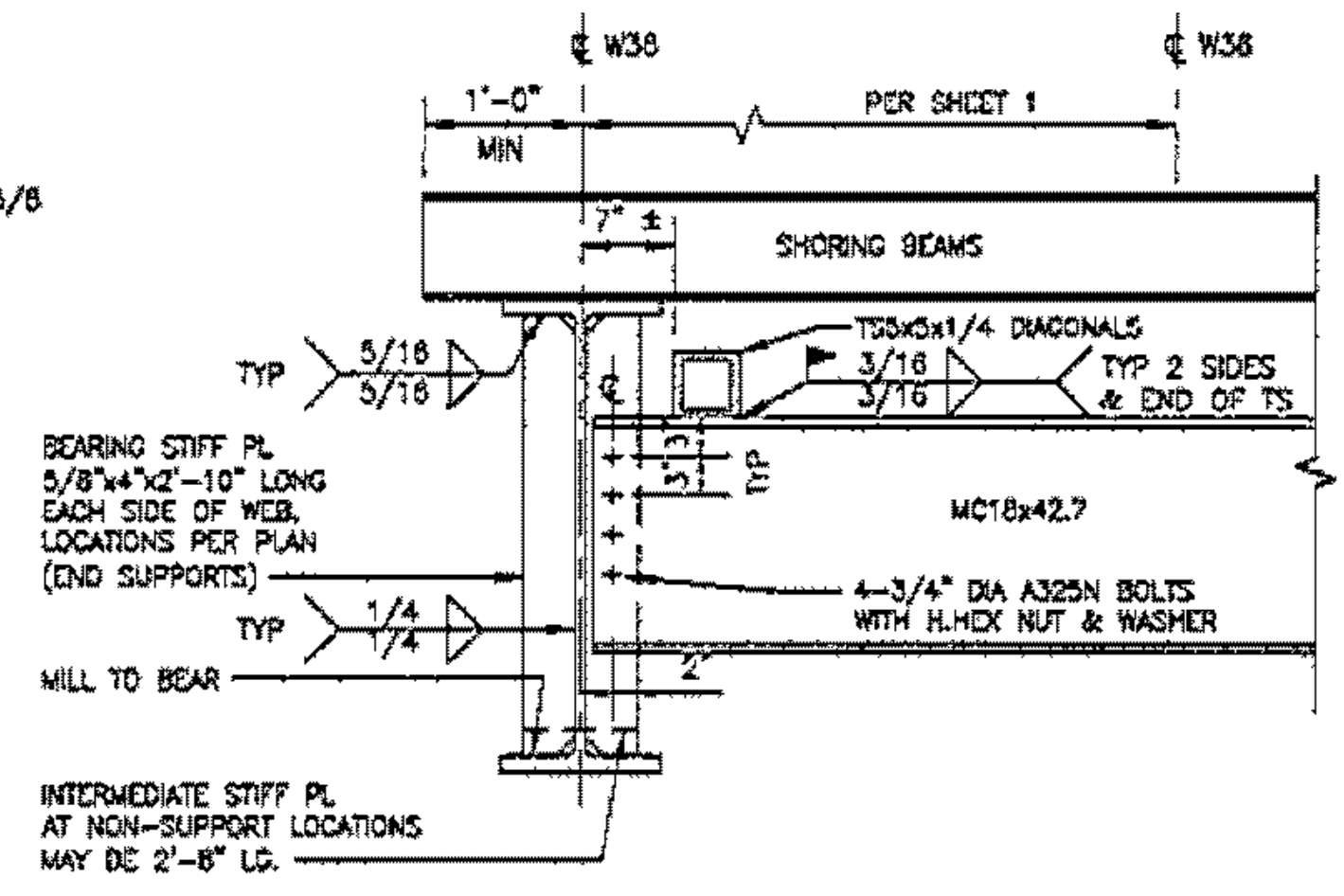


SHORING FRAME
(FLANGE WIDTHS SHOWN EXAGGERATED FOR CLARITY)
SCALE A

* DIMENSION PER SHEET 1.



SECTION A-A
TYPICAL
SCALE B

NOTE

1. USE THIS DRAWING IN CONJUNCTION WITH THE DRAWINGS LISTED AND INFORMATION PROVIDED ON THE FOLLOWING DRAWING:

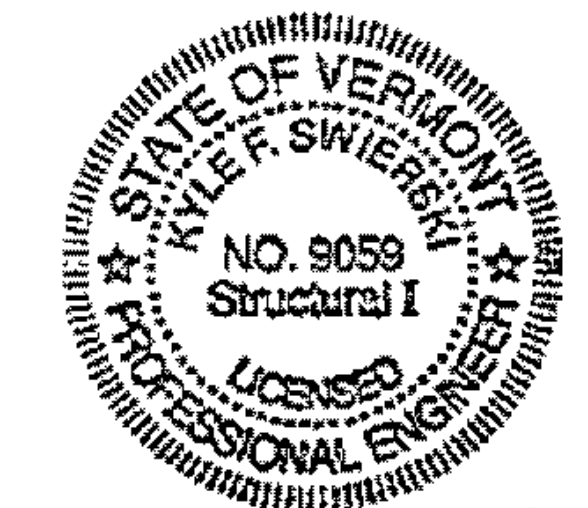
MIDDLEBURY-WEYBRIDGE BRIDGE BHO 1445(33)
TEMPORARY SHORING FOR REHAB
DRAWING LIST & SITE LOCATION PLAN
KFS DWG. NO. ALP-MW-01, SHEET 1

TECHNICAL SPECIFICATIONS

REFER TO SHEET 1.

LEGEND

- T.O. TOP OF
- T.O.S. TOP OF STEEL
- B.O. BOTTOM OF

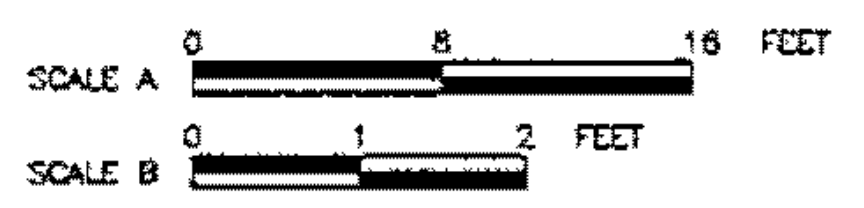


Kyle F. Swierski
01-06-2012

THIS DOCUMENT HAS BEEN PREPARED BY A PROFESSIONAL ENGINEER LICENSED IN THE STATE OF VERMONT. ANY ALTERATION TO THIS DOCUMENT SHALL BE IDENTIFIED AND SEALED/SIGNED BY THE ALTERING LICENSED PROFESSIONAL ENGINEER IN ACCORDANCE WITH THE STATE OF VERMONT LAWS AND RULES.

ALPINE CONSTRUCTION, LLC
VERMONT AGENCY OF TRANSPORTATION

MIDDLEBURY-WEYBRIDGE BRIDGE BHO 1445(33)
TEMPORARY SHORING FOR REHAB
SHORING FRAME
STRUCTURAL STEEL DETAILS



DATE	REV.	DESCRIPTION OF REVISIONS	DRAWN BY	CHECKED BY
01-06-2012	0	ISSUED FOR CONSTRUCTION	LSS	KFS

KYLE F. SWIERSKI, P.E., LLC 41 Bolt Drive Elma, New York 14059 (716) 655-6722 kfswierski@roadrunner.com	PROJECT ID ALP-MW DRAWING NUMBER ALP-MW-03 SHEET 4 OF 4
---	---