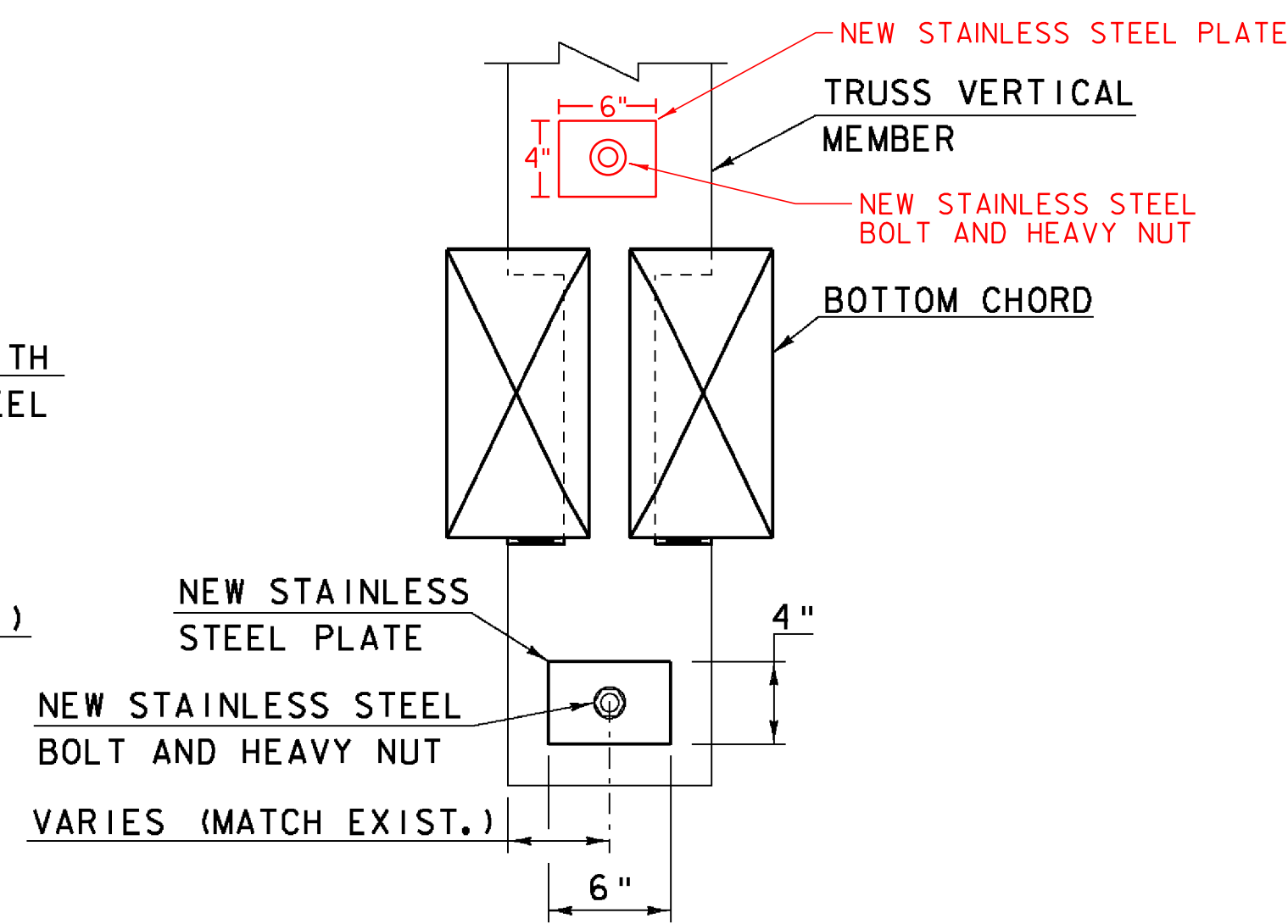
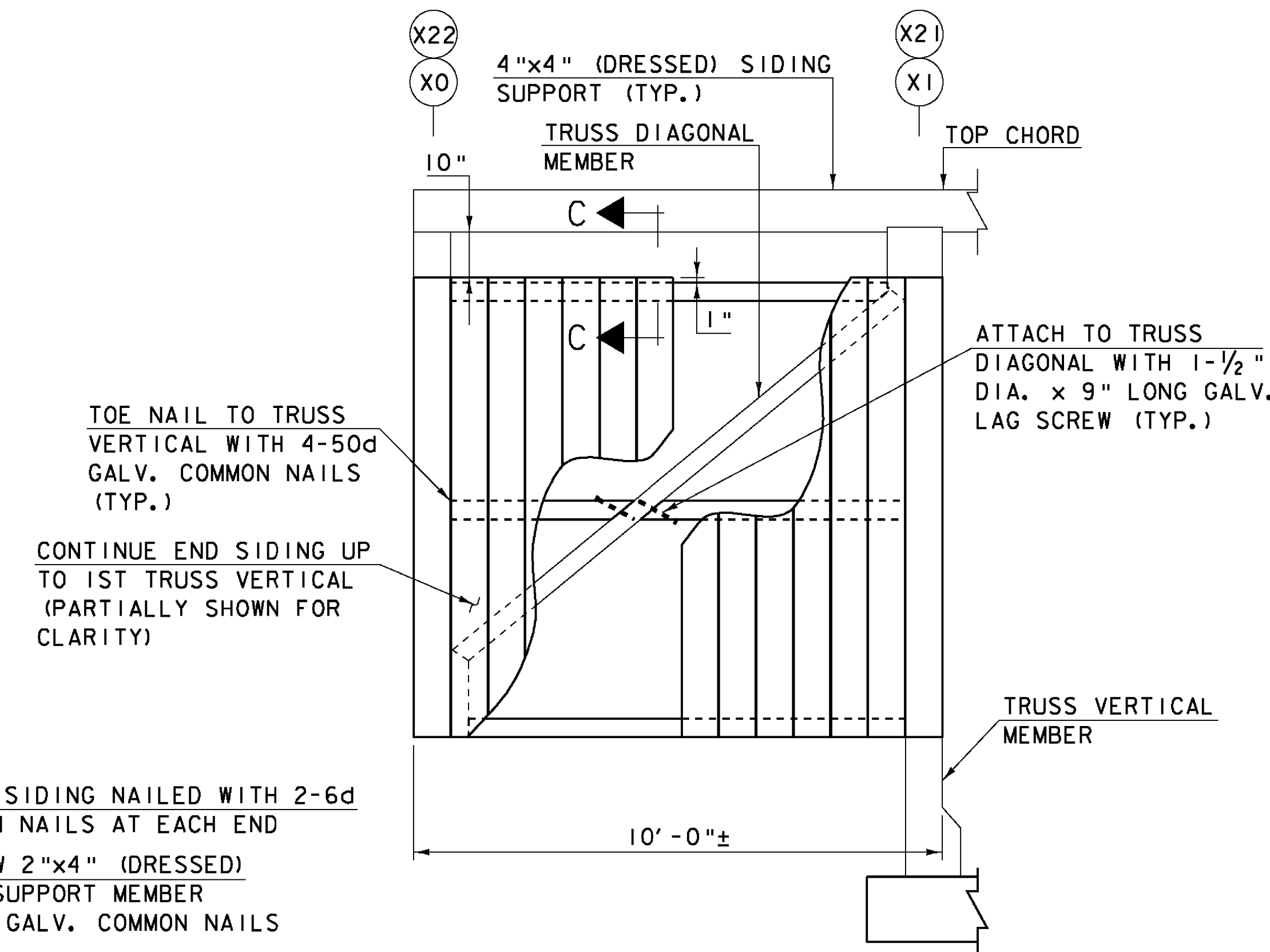


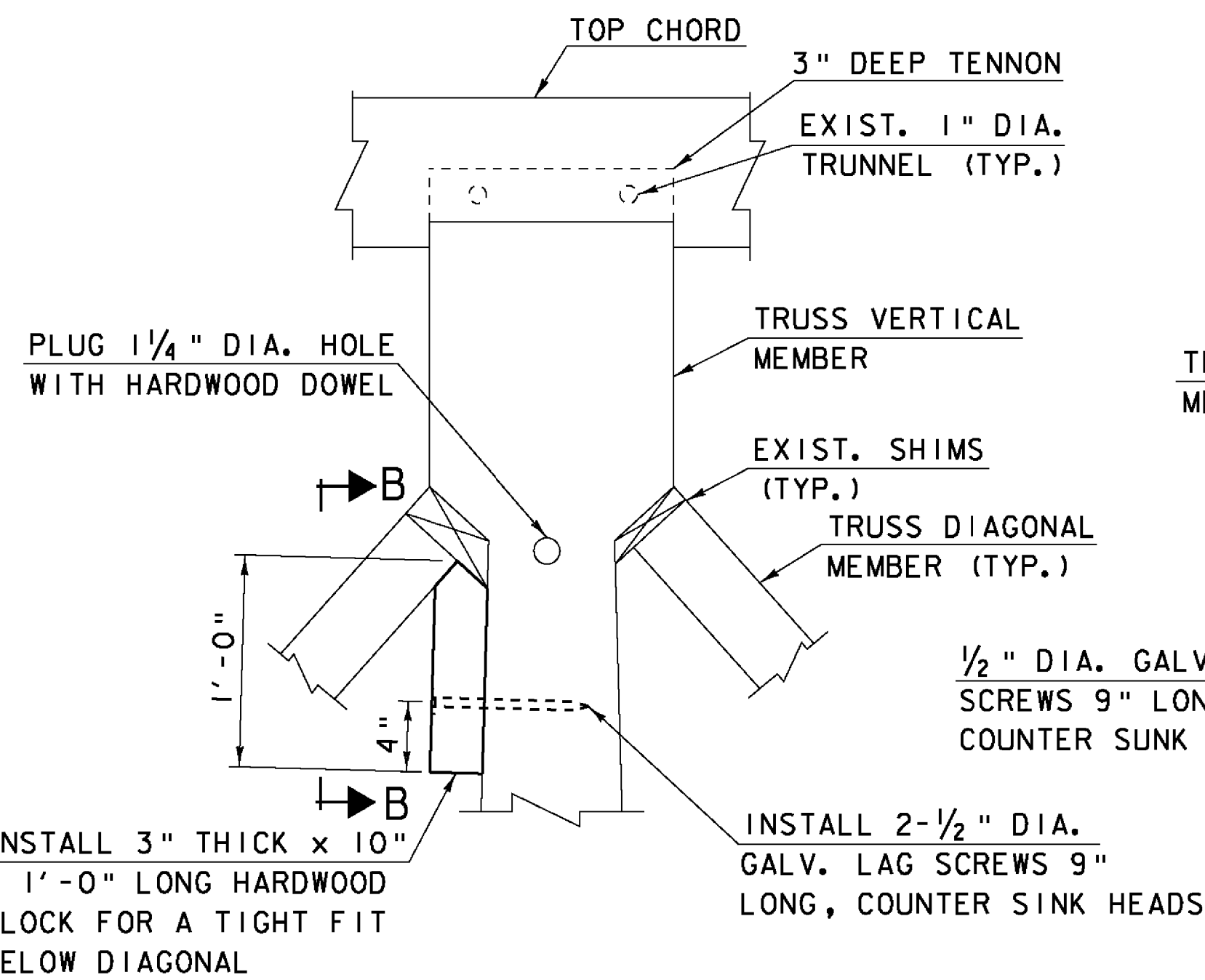
**TRUSS VERTICAL TAIL REPAIR DETAIL**  
SCALE:  $\frac{1}{2}$ " = 1'-0"



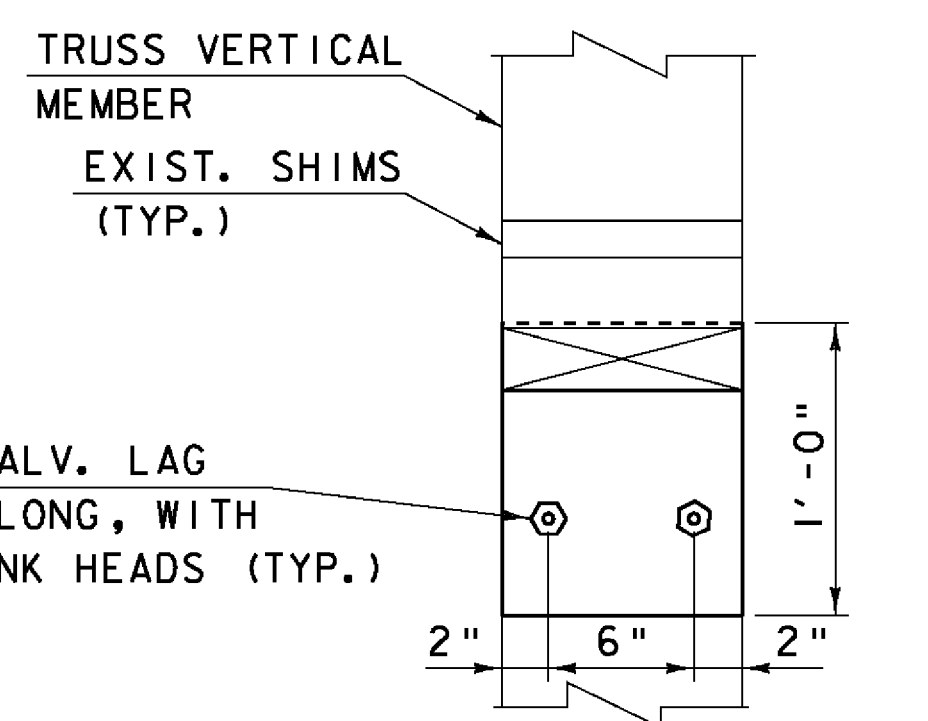
**SECTION A-A**  
SCALE:  $\frac{1}{2}$ " = 1'-0"



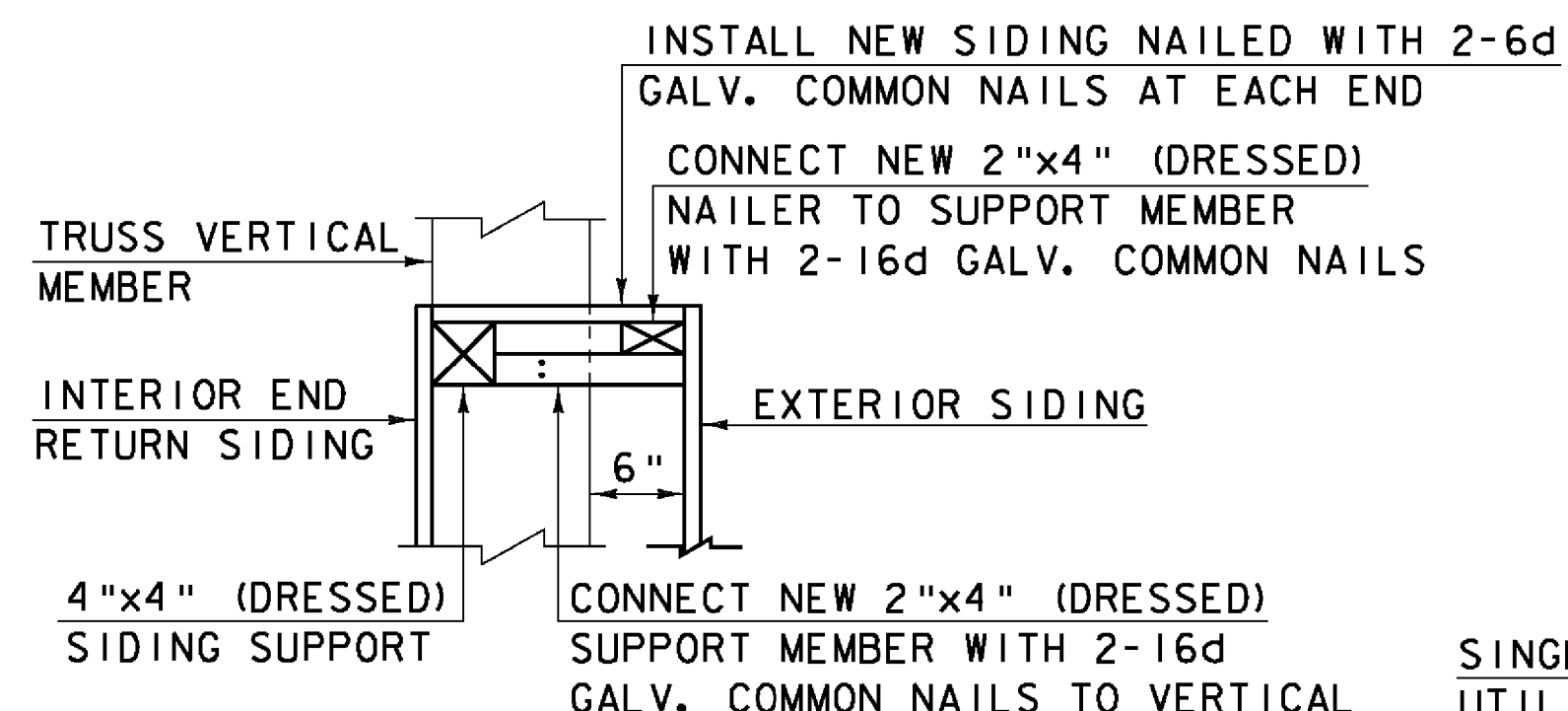
**TYPICAL SIDING END RETURN**  
SCALE:  $\frac{1}{2}$ " = 1'-0"



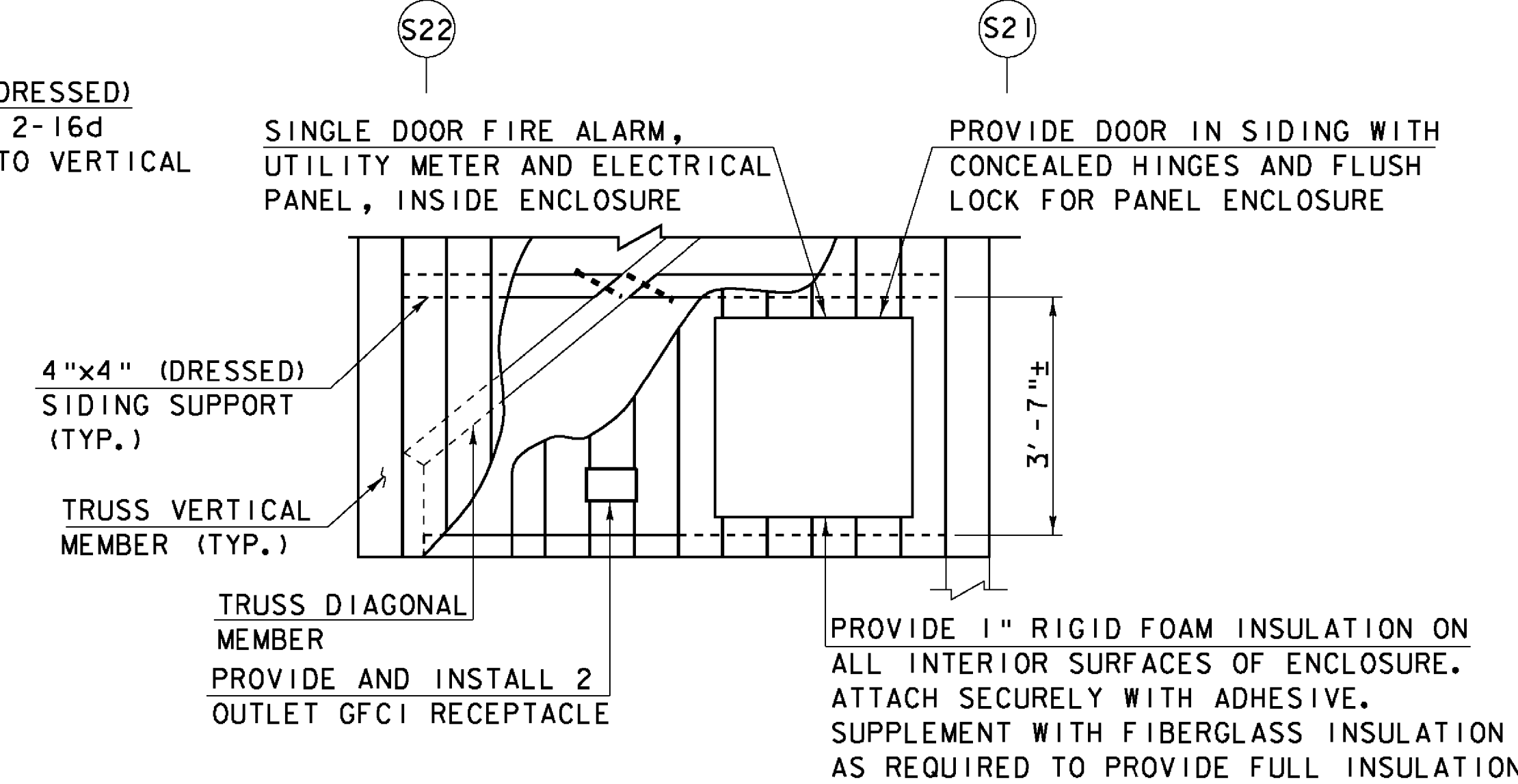
**REPAIR DETAIL AT NODE S11**  
SCALE:  $\frac{1}{2}$ " = 1'-0"



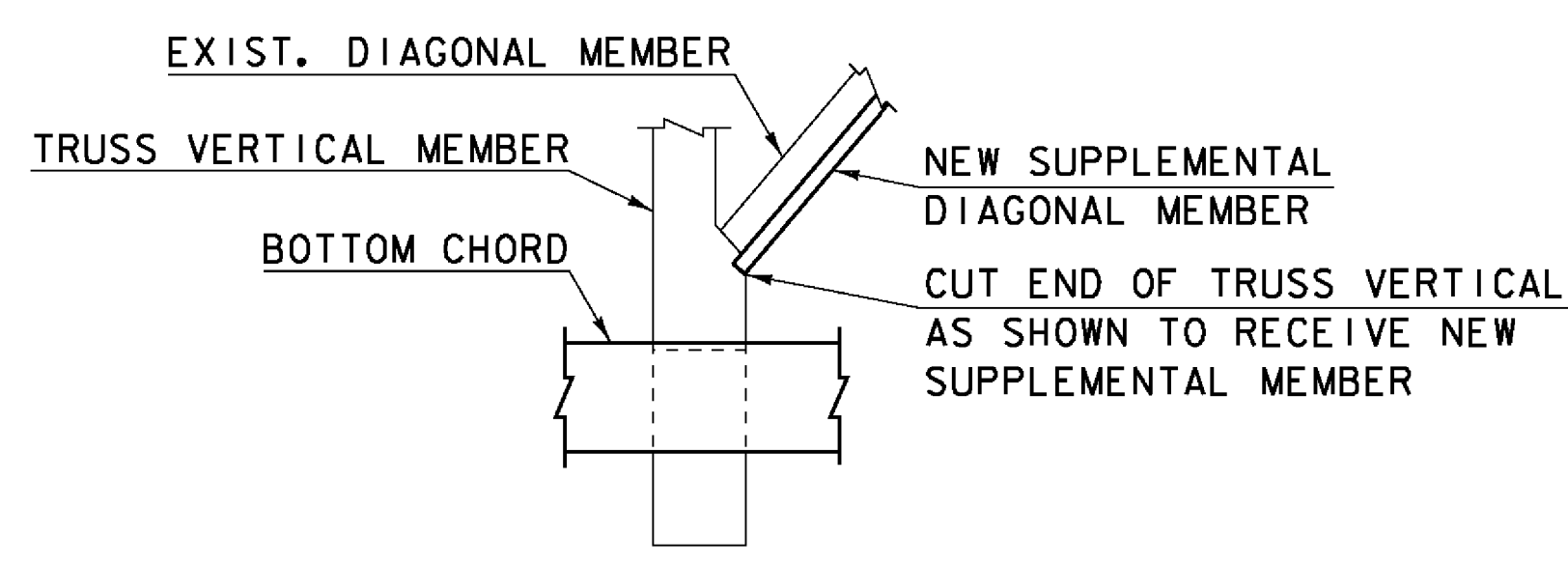
**SECTION B-B**  
SCALE:  $\frac{1}{2}$ " = 1'-0"



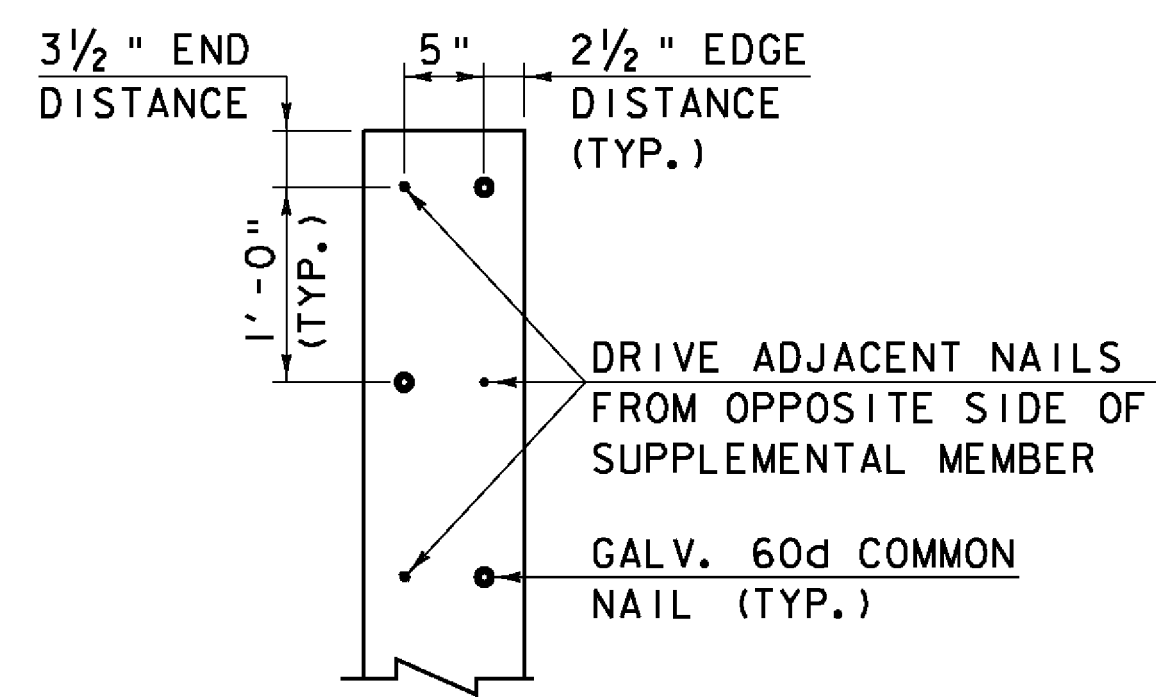
**SECTION C-C**  
SCALE: 1" = 1'-0"



**SE SIDING END RETURN ENCLOSURE**  
SCALE:  $\frac{1}{2}$ " = 1'-0"



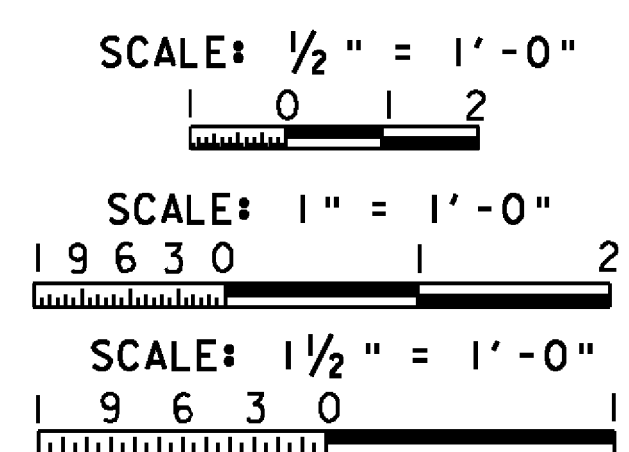
**DETAIL "A"**  
SCALE:  $\frac{1}{2}$ " = 1'-0"



**TYPICAL NAILING PATTERN FOR SUPPLEMENTAL TRUSS DIAGONAL MEMBERS**  
SCALE: 1" = 1'-0"

**SHEET NOTES:**

1. THE REPAIR OF SPLIT IN TAILS OF TRUSS VERTICAL MEMBERS, AS SHOWN ON THIS SHEET, ARE TO BE PAID UNDER ITEM 900.620, SPECIAL PROVISION (WOOD EPOXY REPAIRS). SEE SHEET 27 FOR THE RECOMMENDED REPAIR SEQUENCE.



**Hoyle, Tanner & Associates, Inc.**

HTA PROJECT NO. 904217

MODEL detail-4

PROJECT NAME: MIDDLEBURY-WEYBRIDGE	PLOT DATE: 9/20/2011
PROJECT NUMBER: BHO 1445(33)	DRAWN BY: J.B.McQUAID
FILE NAME: z06j086d+14.dgn	CHECKED BY: S.T.JAMES
PROJECT LEADER: M.D.SARGENT	SHEET 48 OF 66
DESIGNED BY: J.BICJA	
<b>BRIDGE DETAILS (4 OF 4)</b>	