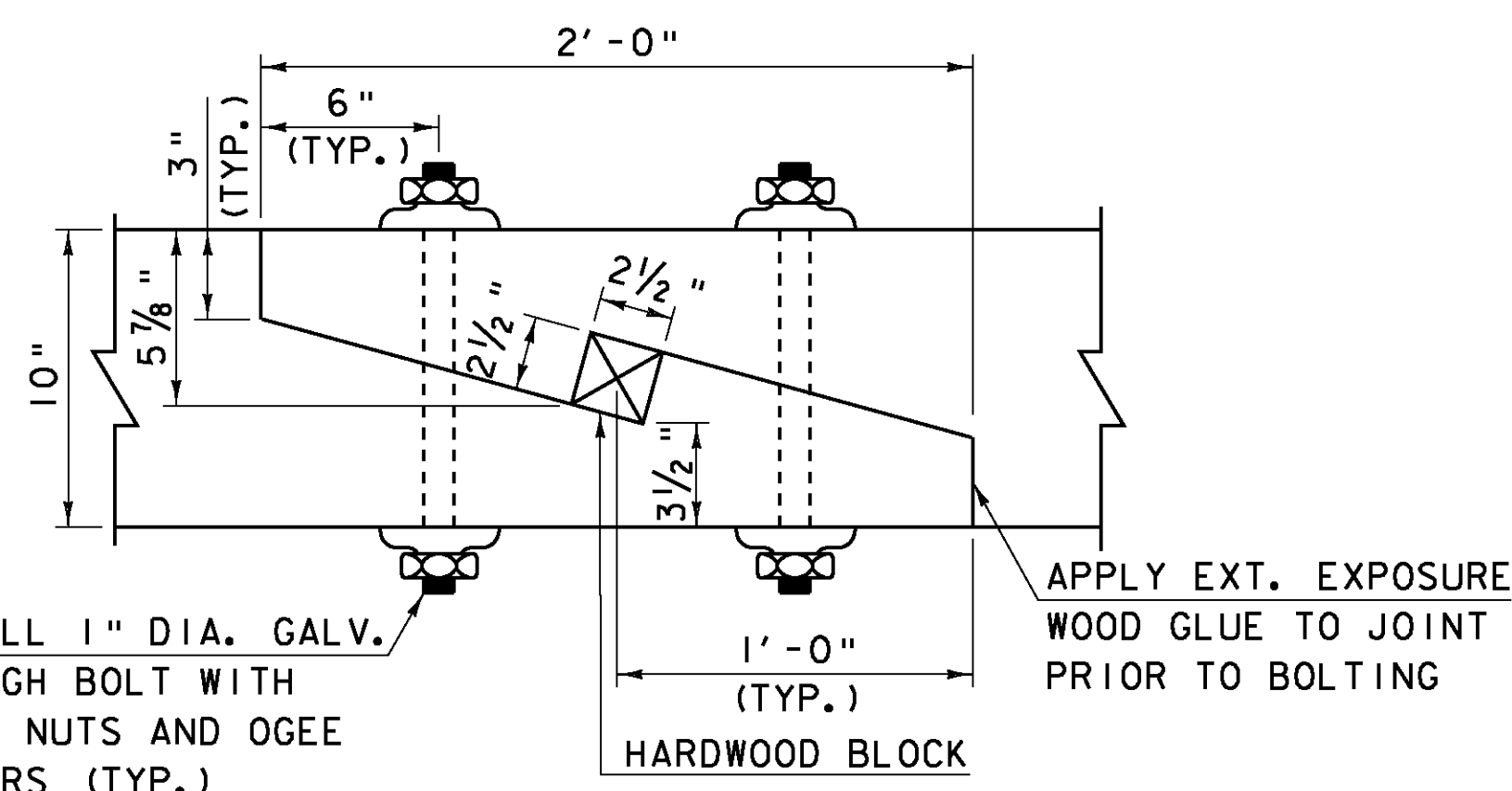


CLASS II VERTICAL CONCRETE REPAIR DETAIL

NOT TO SCALE

SHEET NOTES:

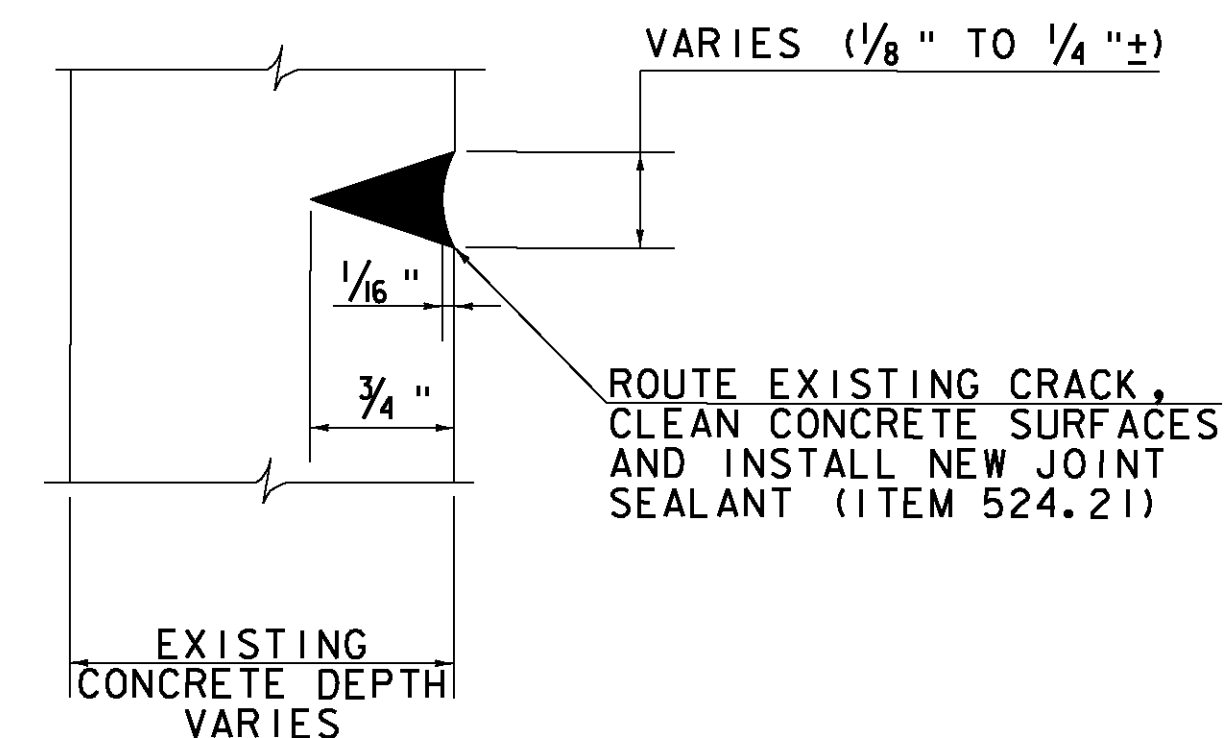
1. PREPARE SPALLED AREA BY REMOVAL OF ALL DETERIORATED CONCRETE TO A MINIMUM DEPTH OF 3/4" BEHIND THE INSIDE FACE OF THE FIRST MAT OF REINFORCING STEEL AND TO SOUND CONCRETE BY SQUARE CUTTING REPAIR AREA (PAID UNDER ITEM 580.14). FEATHERED REMOVAL EDGES WILL NOT BE PERMITTED. MINIMUM REPAIR AREA SHALL BE 1'x1'.
2. USE OF CHIPPING HAMMERS HEAVIER THAN NOMINAL 15 POUND CLASS IS NOT PERMITTED.
3. AFTER CONCRETE REMOVAL, THE REPAIR SURFACE AND EXISTING REINFORCING BARS SHALL BE THOROUGHLY CLEANED OF INJURIOUS RUST, CONCRETE, DIRT, GREASE, OR ANY OTHER BOND-INHIBITING MATERIALS. APPLY ONE COAT OF CONPROCO CORPORATION ECB (ELECTRO-CHEMICAL BARRIER), FERROSEAL BY ISOMAT, MAPEFER BY MAPEI OR APPROVED EQUAL TO ANY EXPOSED REINFORCING.
4. COAT ALL REPAIR SURFACES WITH AN APPROVED BONDING AGENT PRIOR TO PLACING REPAIR MATERIAL.
5. PATCH REPAIR AREA WITH CONCRETE CLASS AA (PAID UNDER ITEM 580.14). A HIGH RANGE WATER REDUCING ADMIXTURE CONFORMING TO THE REQUIREMENTS OF SUBSECTION 725.02(h) SHALL BE USED FOR THE CONCRETE. DOSAGE SHALL BE AS RECOMMENDED BY THE MANUFACTURER TO PRODUCE A SLUMP OF 6-8 INCHES.
6. APPLY A PENETRATING, CORROSION-INHIBITING IMPREGNATION COATING, SIKA FERROGARD 903, CORTEC CORPORATION MCI-2020 V/O, GRACE CONSTRUCTION PRODUCTS POSTRITE OR APPROVED EQUAL FOR A DISTANCE OF 3' BEYOND THE EDGE OF THE CONCRETE REPAIR 7 DAYS AFTER APPLYING REPAIR MATERIAL.
7. ALL WORK AND MATERIALS REQUIRED FOR CONCRETE REPAIRS DESCRIBED IN NOTES 1-6 ABOVE WILL BE INCLUDED IN THE UNIT PRICE BID FOR ITEM 580.14.



TOP CHORD SCARFED JOINT DETAIL

(PLAN VIEW)

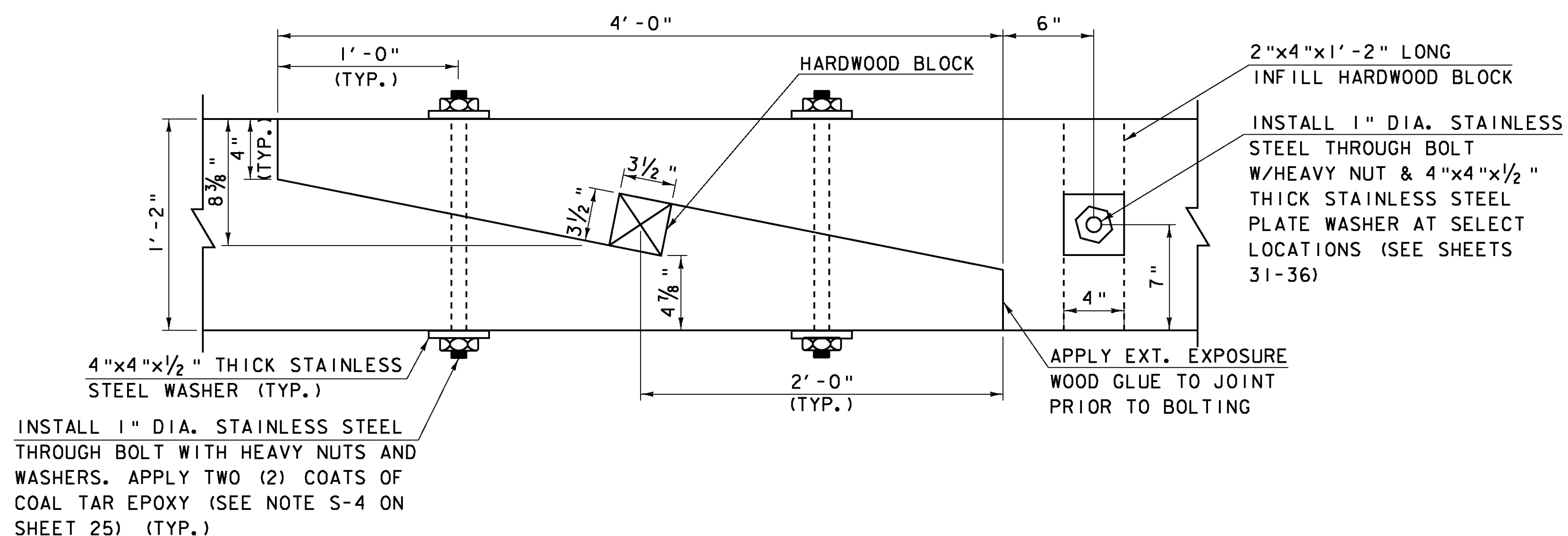
SCALE: 2" = 1'-0"



CRACK SEAL DETAIL

NOT TO SCALE

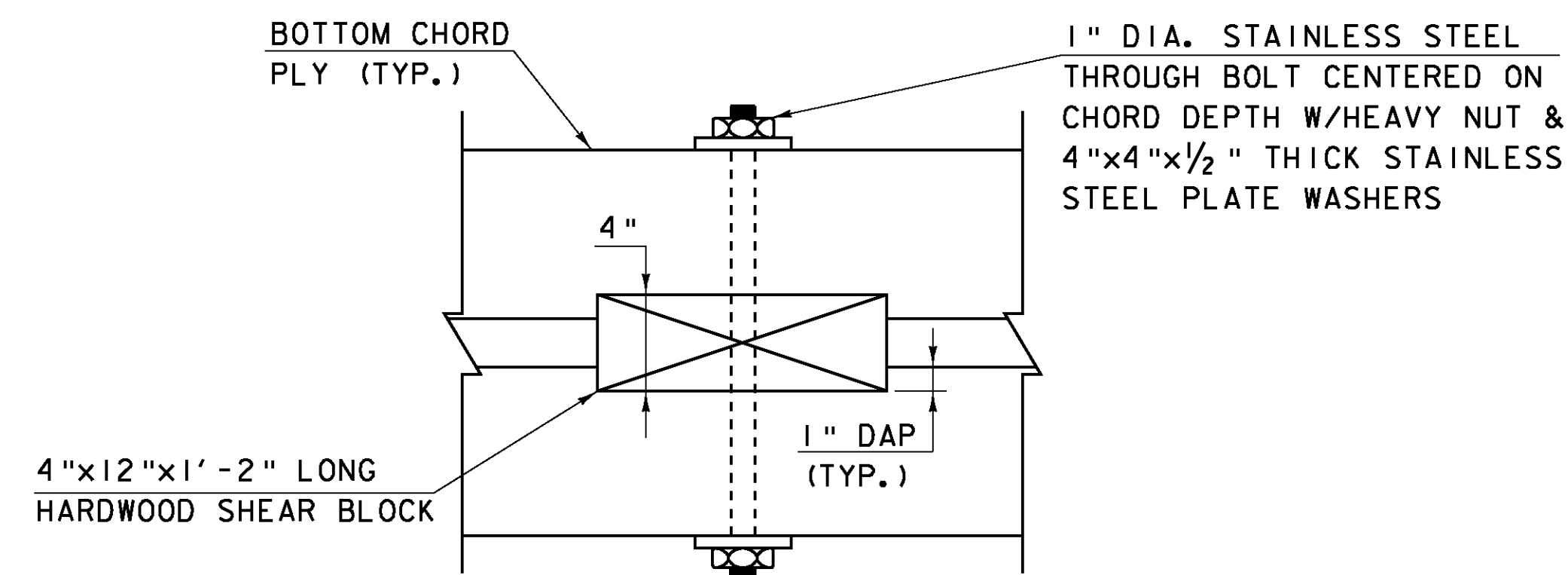
NOTE: NEW JOINT SEALANT SHALL BE AN APPROVED ONE COMPONENT POLYURETHANE ELASTOMERIC SEALANT COMPLYING WITH SUBSECTION 707.05.



BOTTOM CHORD SCARFED JOINT DETAIL

(ELEVATION VIEW)

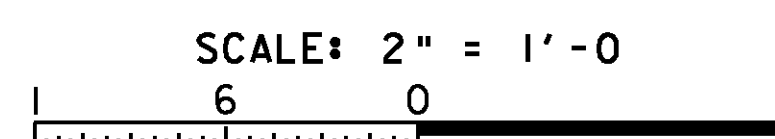
SCALE: 2" = 1'-0"



BOTTOM CHORD SHEAR BLOCK JOINT DETAIL

(PLAN VIEW)

SCALE: 2" = 1'-0"



Hoyle, Tanner & Associates, Inc.

HTA PROJECT NO. 90427 MODEL detail-2

PROJECT NAME: MIDDLEBURY-WEYBRIDGE

PROJECT NUMBER: BHO 1445(33)

FILE NAME: z06j086d+i2.dgn

PROJECT LEADER: M.D.SARGENT

DESIGNED BY: J.BICJA

BRIDGE DETAILS (2 OF 4)

PLOT DATE: 9/20/2011

DRAWN BY: J.B.McQUAD

CHECKED BY: S.T.JAMES

SHEET 46 OF 66