

INSTALL LIGHT FIXTURE ON 2-4"x4" SUPPORT BEAMS. BOTTOM OF FIXTURE SHALL BE 1" ABOVE BOTTOM OF THE CROSS BEAM (TYP.) (16 LOCATIONS)

NOTE: INTERIOR TRUSS TOP CHORD NOT SHOWN FOR CLARITY.

UPPER LATERAL BRACING PLAN

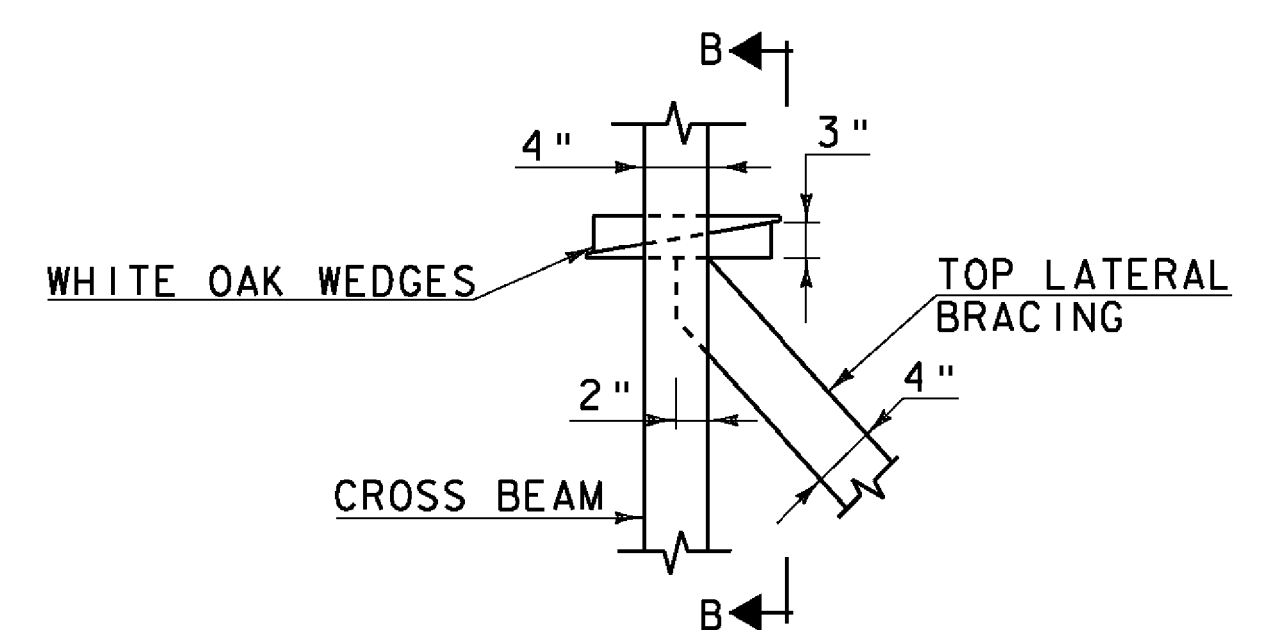
SCALE: 1/4" = 1'-0"

100 AMP MAIN BREAKER		
NO.	AMP	DESCRIPTION
01	20	GFCI OUTLETS AND END LIGHTS BETWEEN NODES 0-1 AND 21-22
02	20 (NON AFCI)	FIRE PROTECTION SYSTEM
03	20	EAST BOUND INTERIOR LIGHTS (NODES 3-19)
04	20	WEST BOUND INTERIOR LIGHTS (NODES 3-19)
05	20	OPEN

LIGHTING AND LOAD PANEL

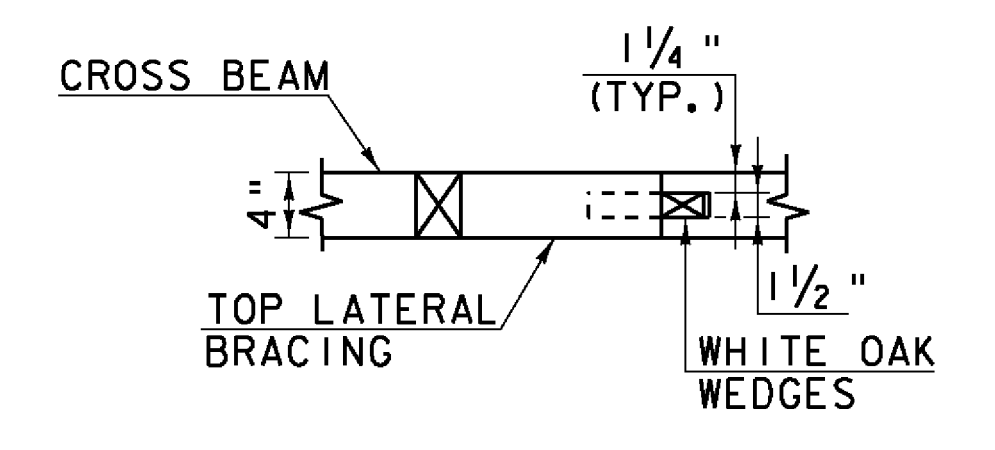
NOTE:
1. SEE SHEET 29 FOR NOTES THAT APPLY TO THIS SHEET.

- LEGEND:**
- XXX TRUSS NODE LOCATION
 - PREDETERMINED MEMBER TO BE REPLACED
 - SALVAGED MEMBER (SEE NOTE 1 SHEET 29)
 - E PROPOSED ELECTRIC



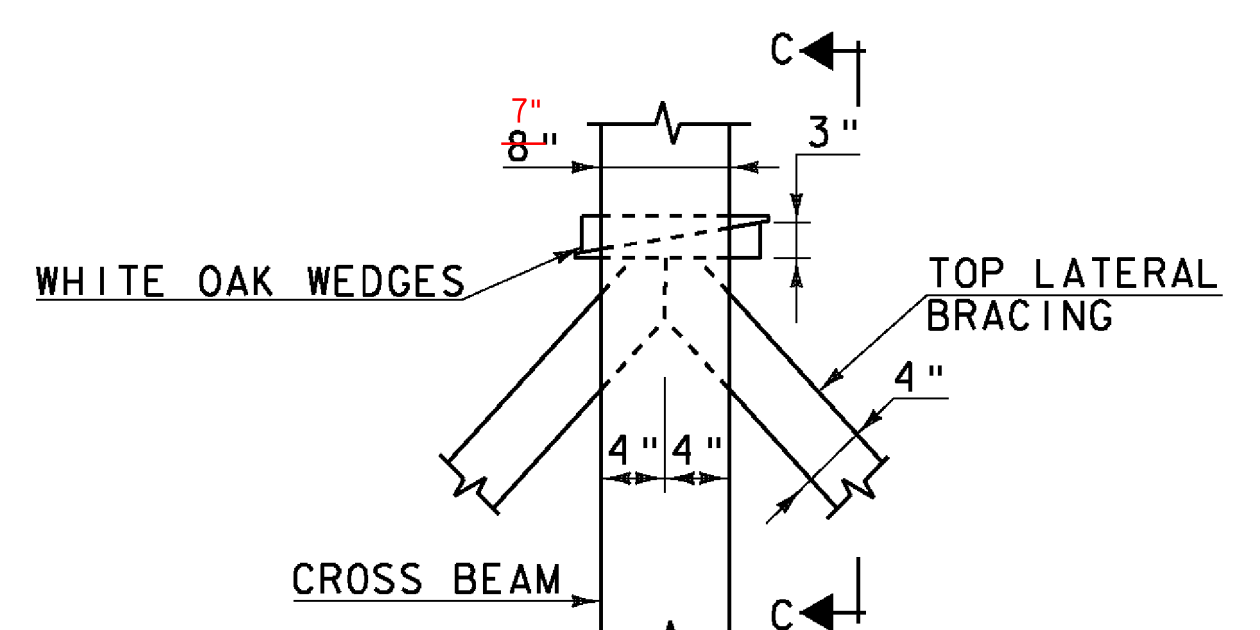
DETAIL "C"

SCALE: 1" = 1'-0"



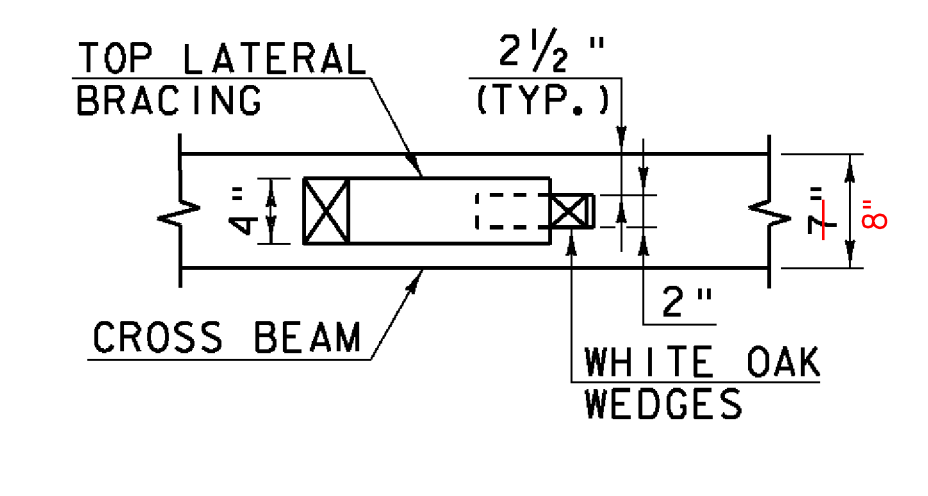
SECTION B-B

SCALE: 1" = 1'-0"



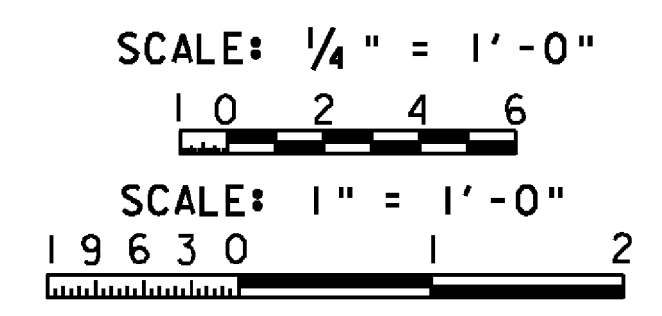
DETAIL "D"

SCALE: 1" = 1'-0"



SECTION C-C

SCALE: 1" = 1'-0"



Hoyle, Tanner & Associates, Inc.

HTA PROJECT NO. 904217 MODEL BracUp2

PROJECT NAME: MIDDLEBURY-WEYBRIDGE

PROJECT NUMBER: BHO 1445(33)

FILE NAME: z06j086supl.dgn

PROJECT LEADER: M.D.SARGENT

DESIGNED BY: J.BICJA

UPPER LATERAL BRACING PLAN (2 OF 2)

PLOT DATE: 9/20/2011

DRAWN BY: J.B.McQUAID

CHECKED BY: S.T.JAMES

SHEET 30 OF 66