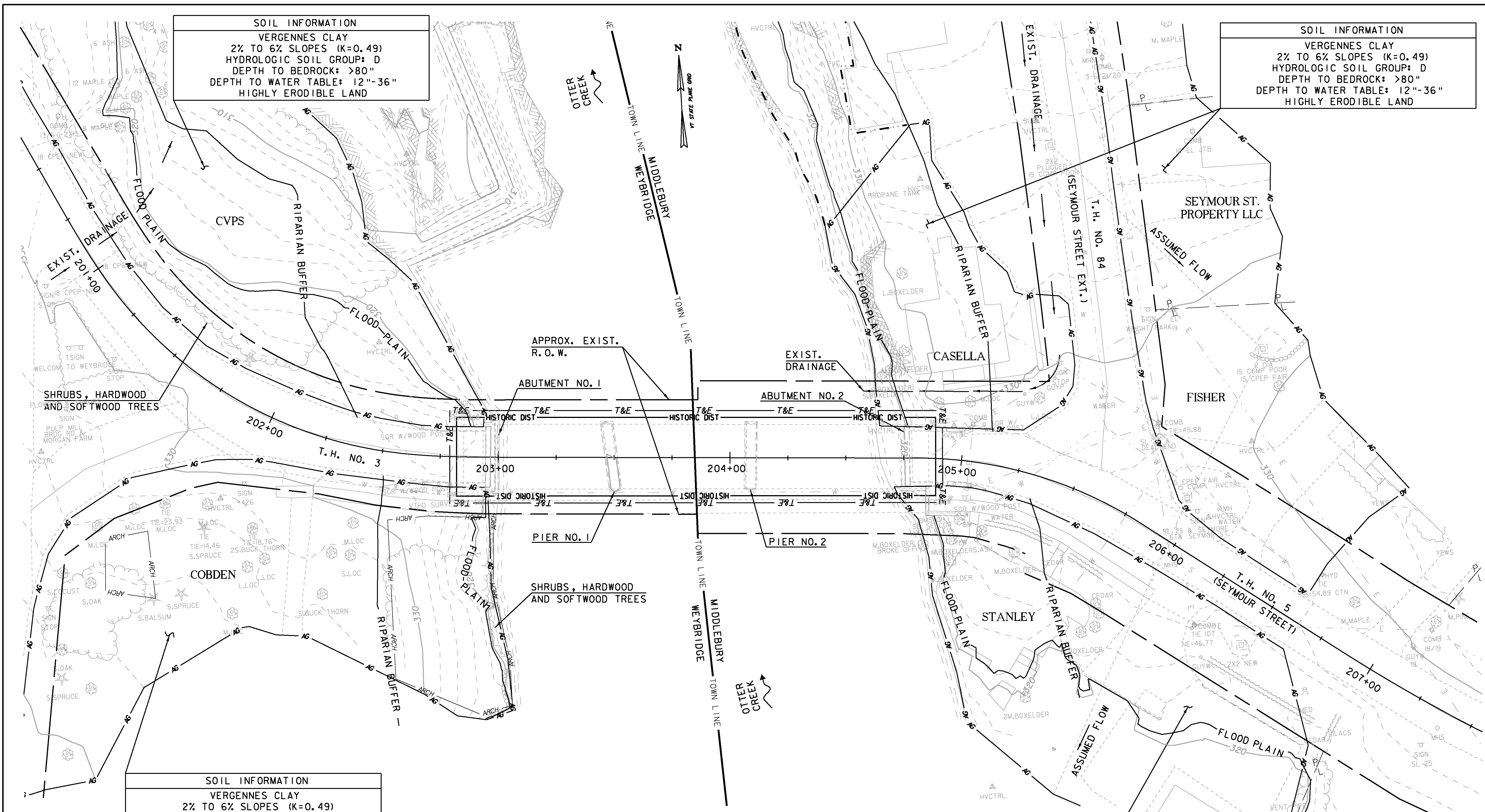


SOIL INFORMATION
 VERGENNES CLAY
 2% TO 6% SLOPES (K=0.49)
 HYDROLOGIC SOIL GROUP: D
 DEPTH TO BEDROCK: >80"
 DEPTH TO WATER TABLE: 12"-36"
 HIGHLY ERODIBLE LAND

SOIL INFORMATION
 VERGENNES CLAY
 2% TO 6% SLOPES (K=0.49)
 HYDROLOGIC SOIL GROUP: D
 DEPTH TO BEDROCK: >80"
 DEPTH TO WATER TABLE: 12"-36"
 HIGHLY ERODIBLE LAND

SOIL INFORMATION
 VERGENNES CLAY
 2% TO 6% SLOPES (K=0.49)
 HYDROLOGIC SOIL GROUP: D
 DEPTH TO BEDROCK: >80"
 DEPTH TO WATER TABLE: 12"-36"
 HIGHLY ERODIBLE LAND

SOIL INFORMATION
 VERGENNES CLAY
 2% TO 6% SLOPES (K=0.49)
 HYDROLOGIC SOIL GROUP: D
 DEPTH TO BEDROCK: >80"
 DEPTH TO WATER TABLE: 12"-36"
 HIGHLY ERODIBLE LAND



EXISTING CONDITIONS PLAN

SCALE: 1" = 20' - 0"
 20 0 20

LEGEND:
 - - - - - SOIL BOUNDARY
 - - - - - OVERHEAD UTILITY LINES

DATUM

VERTICAL	NAVD 88
HORIZONTAL	NAD 83 (96)
ADJUSTMENT	COMPASS

PLAN NOTE:
 1. REFER TO RESOURCE LAYOUT SHEET FOR DESCRIPTIONS OF LINE STYLE SYMBOLS.

Hoyle, Tanner & Associates, Inc.

HTA PROJECT NO.	MODEL
90427	ECP

PROJECT NAME:	MIDDLEBURY-WEYBRIDGE	FILE NAME:	z06j086ero2.dgn	PLOT DATE:	9/20/2011
PROJECT NUMBER:	BHO 1445(33)	PROJECT LEADER:	M.D.SARGENT	DRAWN BY:	J.B.MCQUAD
		DESIGNED BY:	J.BICJA	CHECKED BY:	S.T.JAMES
		EPSC EXISTING CONDITIONS PLAN		SHEET	17 OF 66